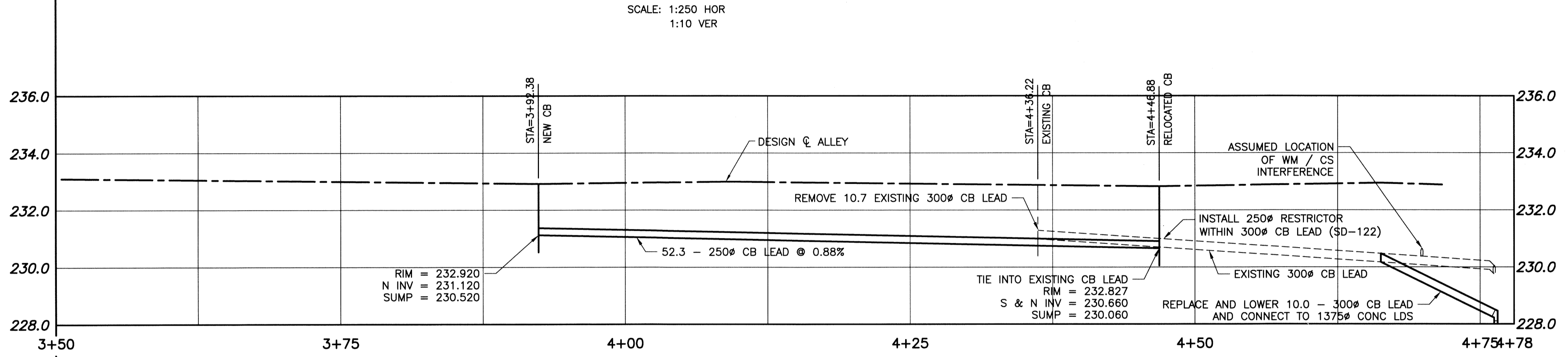
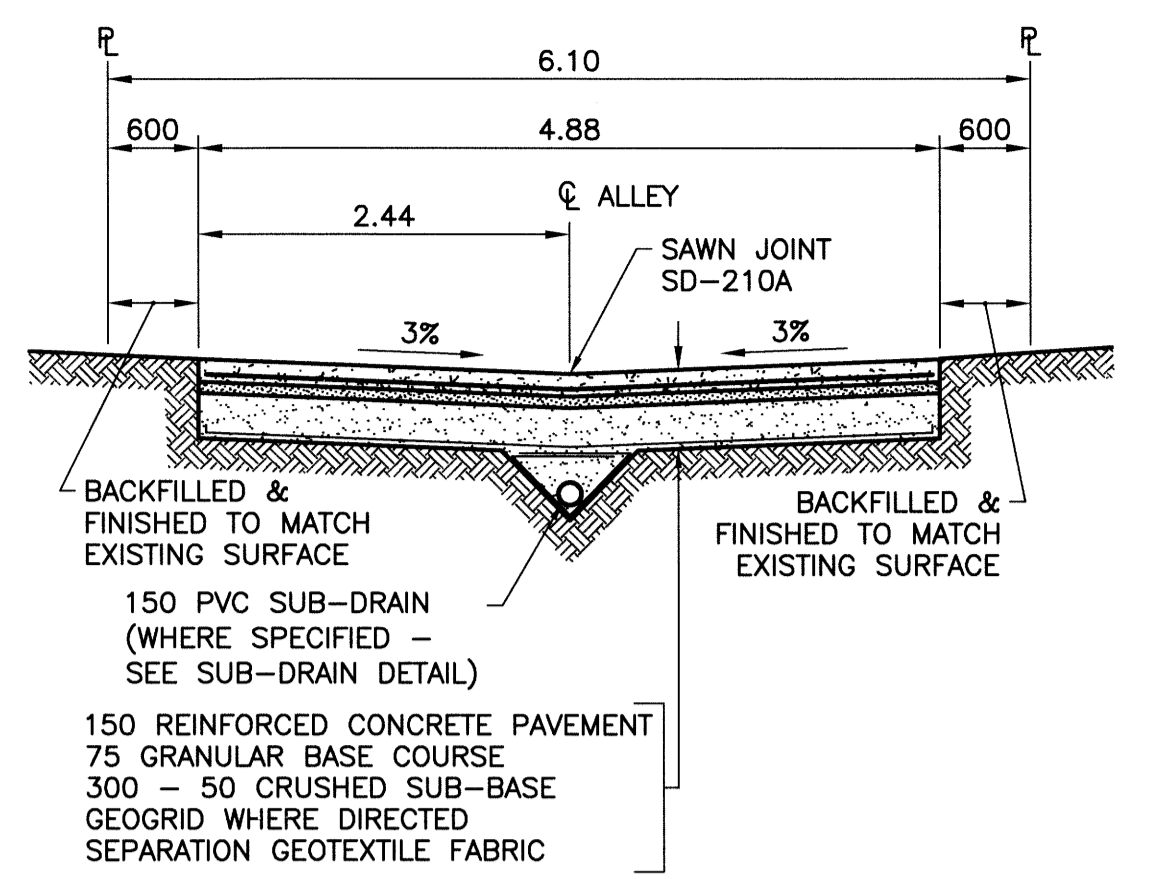


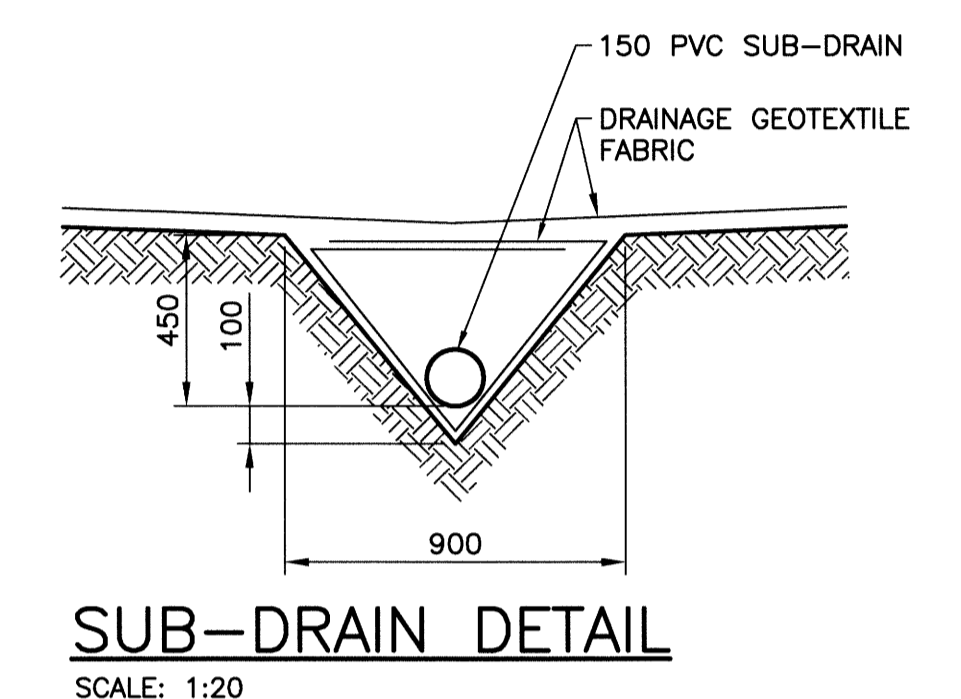
ALLEY PAVEMENT PROFILE
SCALE: 1:250 HOR
1:10 VER



ALLEY SEWER PROFILE
SCALE: 1:250 HOR
1:100 VER



TYPICAL CROSS SECTION
SCALE: 1:50



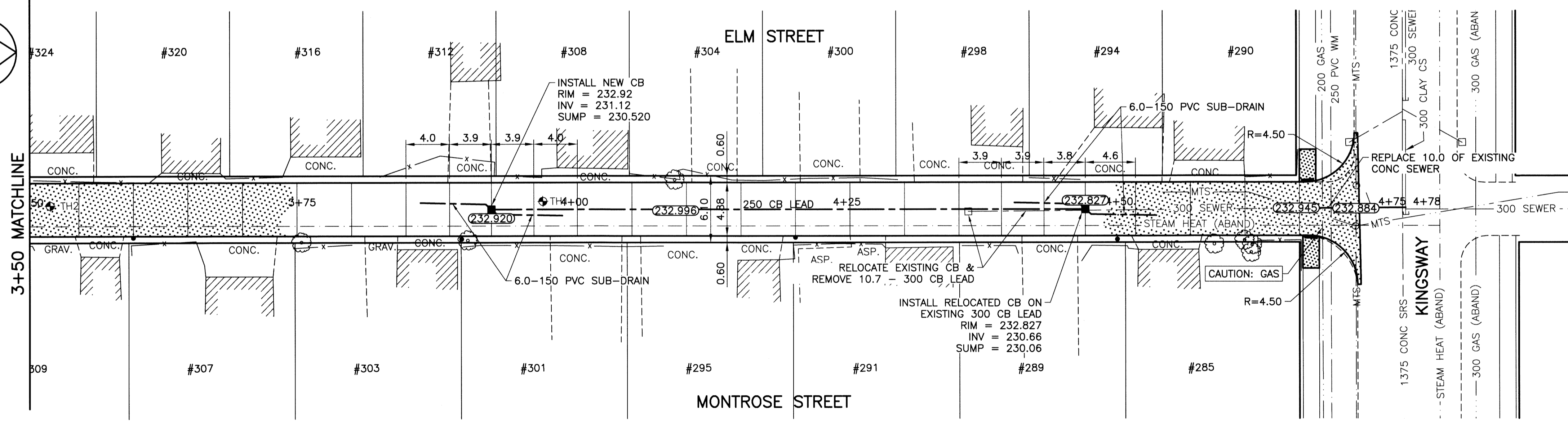
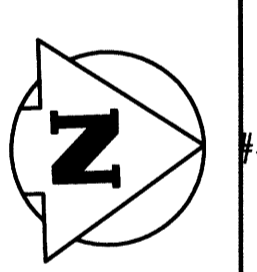
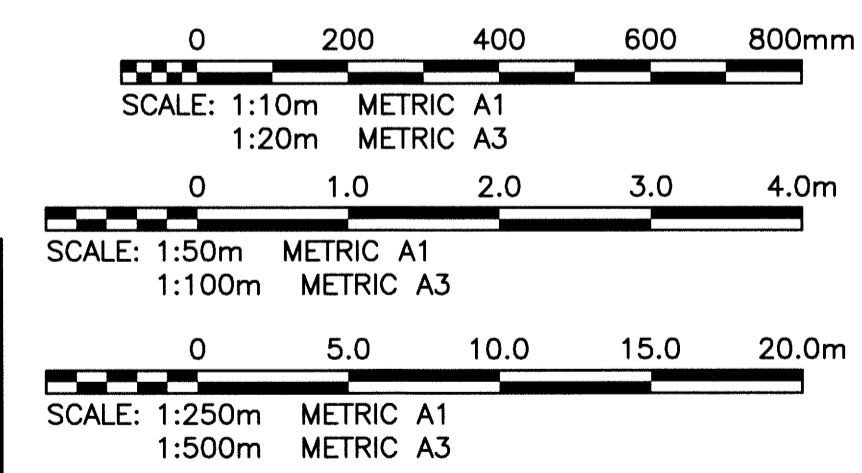
SUB-DRAIN DETAIL
SCALE: 1:20

- NOTES:**
1. STATION CHAINAGE IS BASED ON CENTERLINE OF ALLEY RIGHT OF WAY.
 2. ADJUST MH AND CB RIMS TO NEW GRADES.
 3. PLUG SUB-DRAINS AT TERMINAL ENDS.
 4. REGRADE EXISTING PRIVATE SIDEWALKS AS REQUIRED.
 5. INSTALLATION OF LIP CURBS AND THEIR EXTENTS TO BE DETERMINED BY THE CONTRACT ADMINISTRATOR.
 6. LIGHT STANDARDS, HYDRO POLES AND ANCHORS MAY REQUIRE TEMPORARY SUPPORT/REMOVAL OR REPLACEMENT AT THE CONTRACTOR'S EXPENSE.
 7. ISOLATE ALL POLES, BASES AND PILES WITHIN ALLEY RIGHT OF WAY (SD-228C)
 8. AVOID DAMAGE TO EXISTING TREES WITHIN THE LIMITS OF CONSTRUCTION.

WARNING
NOTIFY THE GAS COMPANY OF THE PROPOSED LOCATION OF EXCAVATION. TAKE PRECAUTION TO AVOID DAMAGE TO GAS COMPANY INSTALLATIONS. SEE PROVINCIAL REGULATION 210/72 FOR DETAILS.

METRIC
WHOLE NUMBERS INDICATE MILLIMETRES
DECIMALIZED NUMBERS INDICATE METRES

PROPERTY LIMITS DELINEATION
DELINEATION OF PROPERTY LIMITS AS SHOWN ON THIS DWG DOES NOT REPRESENT A "LEGAL SURVEY". KGS GROUP MAKES NO REPRESENTATION OR WARRANTY AS TO THE ACCURACY OF PROPERTY LIMITS DELINEATED ON THIS DWG, NOR ON THE DIMENSIONAL ACCURACY OF DWG FEATURES RELATIVE TO THOSE PROPERTY LIMITS.



ALLEY PAVEMENT PLAN
SCALE: 1:250 HOR

APEGM
Certificate of Authorization
KGS Group
No. 245

300 LDS	LAND DRAINAGE SEWER	300 LDS					
250 WWS	WASTE WATER SEWER	250 WWS	TEST HOLE				
	GAS		GUY WIRE				
	HYDRO		LIGHT STANDARD				
	M.T.S.		BACK OF CURB				
150 WM	WATERMAIN	150 WM	CONCRETE				
	HYDRANT		ASPHALT				
	VALVE		SIDEWALK				
	MANHOLE		PROPERTY LINE				
	CATCH BASIN		SURVEY BAR				
	CURB INLET		GEODETIC BENCHMARK				
	POLES		ELEVATION	231.334			
EXISTING	LEGEND-PLAN	PROPOSED	EXISTING	LEGEND-PLAN	PROPOSED	EXISTING	LEGEND-PROFILE

LOCATION APPROVED UNDERGROUND STRUCTURES

SUPV. U/G STRUCTURES DATE COMMITTEE

NOTE:
LOCATION OF UNDERGROUND STRUCTURES AS SHOWN ARE BASED ON THE BEST INFORMATION AVAILABLE, BUT NO GUARANTEE IS GIVEN THAT ALL EXISTING UTILITIES ARE SHOWN OR THAT THE GIVEN LOCATIONS ARE EXACT. CONFIRMATION OF EXISTENCES AND EXACT LOCATION OF ALL SERVICES MUST BE OBTAINED FROM THE INDIVIDUAL UTILITIES BEFORE PROCEEDING WITH CONSTRUCTION.

B.M. 51-040	N.W. Cor. academy Rd. & Elm St., 19mm x 52mm I.B. in Valve Box, 2.1m e. of w.L. elm st. & 0.2m N. of N.L. academy Rd.
ELEV. 232.591	

DESIGNED BY	GES	CHECKED BY	CR
DRAWN BY	GEL	APPROVED BY	pph
HOR. SCALE:	1:250	RELEASED FOR CONSTRUCTION:	
VERTICAL:	1:50	DATE	14/03/14
NO. REVISIONS		DATE	14/05/23

KGS GROUP
CONSULTING ENGINEERS

ENGINEER'S SEAL
M.C. ROWBOTHAM
REGISTERED PROFESSIONAL ENGINEER
13-0107-007_C08

THE CITY OF WINNIPEG
PUBLIC WORKS DEPARTMENT
TRANSPORTATION ENGINEERING DIVISION

PROJECT TITLE
2013 ALLEY RENEWAL PROGRAM
CONTRACT 1
ELM STREET/MONTROSE STREET
GROSVENOR AVENUE TO KINGSWAY
STA 3+50 TO KINGSWAY

SHEET OF
08 OF **14**

COMPUTER FILE NAME
13-0107-031_CALL

CITY DRAWING NUMBER
0008

P:\Projects\2013\13-0107-031\Doc\Control\Tobalsaud\DWG\13-0107-031_C08-Rev 0.dwg - Tab: C08 Plotted By: Gloewen 05/22/2014 [Thu 10:03am] PLOT 1:1 A=1