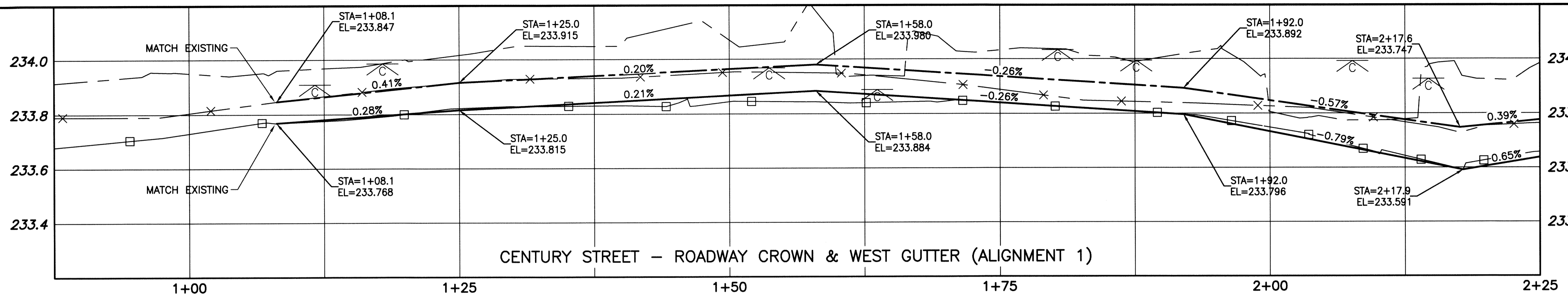
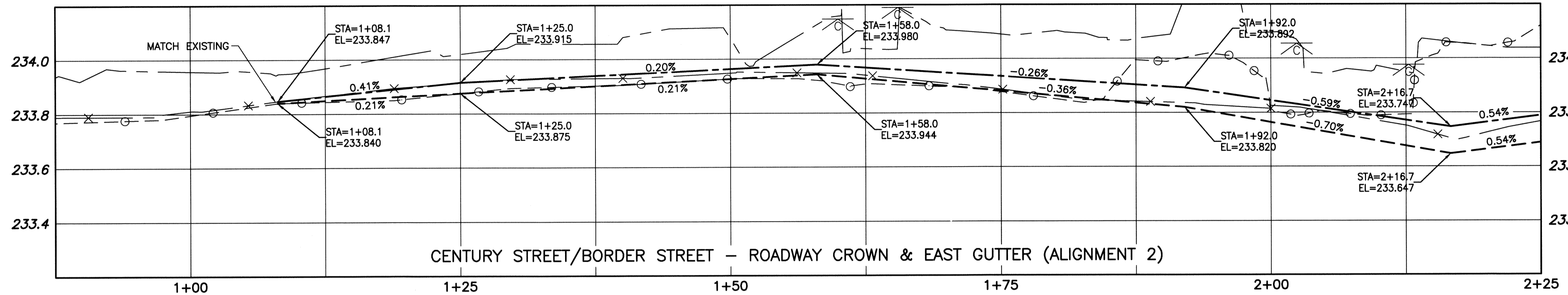


File Name: P:\Projects\2013\13-0107-005_P-3357-01-Rev 0.dwg - Tab: P-3357-01 Plotted By: Gloewen 14/05/28 [Wed 10:50am]
 Plot Scale: 1:1



- GENERAL NOTES:**
- ADJUST MH AND CB RIMS TO NEW GRADES.
 - DESIGN GRADES TO BE CONFIRMED BY KGS GROUP AFTER ASPHALT PLANING OF EACH LANE.
 - AVOID DAMAGE TO EXISTING TREES EXCEPT THOSE IDENTIFIED FOR REMOVAL.
 - ALL PAVEMENT MEASUREMENTS ARE TO BACK OF CURB. WHERE SPLASH STRIP CURB IS SPECIFIED, BACK OF CURB IS TO BE REFERENCED 600 FROM THE BACK OF THE SPLASH STRIP TOWARD THE CURB FACE.
 - ISOLATE ALL POLES, BASES AND PILES WITHIN SIDEWALKS AND SPLASH STRIP (SD-228C).
 - THE CONTRACTOR SHALL INSTALL SIGN CLAMPS AT THE LOCATIONS SHOWN ON THE DRAWINGS AND WHERE DIRECTED IN THE FIELD BY THE CONTRACT ADMINISTRATOR.



PROPERTY LIMITS DELINEATION

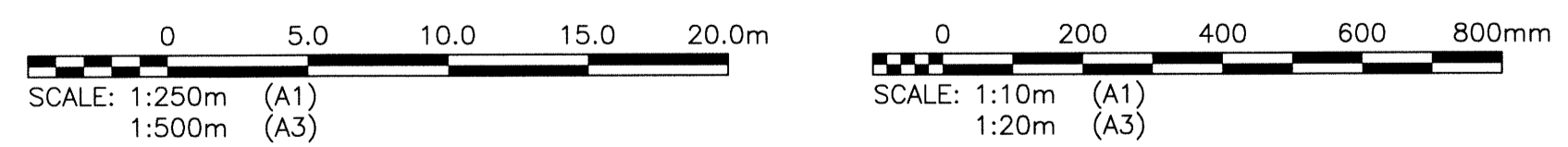
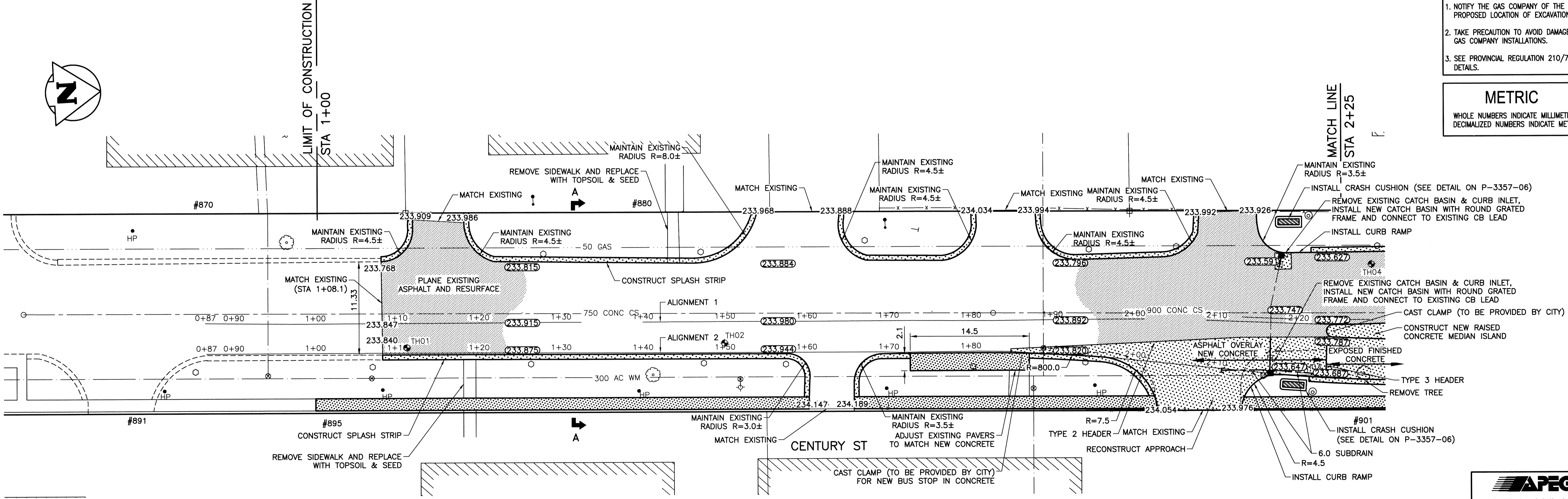
DELINEATION OF PROPERTY LIMITS AS SHOWN ON THIS DWG DOES NOT REPRESENT A "LEGAL SURVEY". KGS GROUP MAKES NO REPRESENTATION OR WARRANTY AS TO THE ACCURACY OF PROPERTY LIMITS DELINEATED ON THIS DWG, NOR ON THE DIMENSIONAL ACCURACY OF DWG FEATURES RELATIVE TO THOSE PROPERTY LIMITS.

WARNING

- NOTIFY THE GAS COMPANY OF THE PROPOSED LOCATION OF EXCAVATION.
- TAKE PRECAUTION TO AVOID DAMAGE TO GAS COMPANY INSTALLATIONS.
- SEE PROVINCIAL REGULATION 210/72 FOR DETAILS.

METRIC

WHOLE NUMBERS INDICATE MILLIMETRES
DECIMALIZED NUMBERS INDICATE METRES



EXISTING	LEGEND-PLAN	PROPOSED	EXISTING	LEGEND-PLAN	PROPOSED	EXISTING	LEGEND-PROFILE	PROPOSED
300 LBS	LAND DRAINAGE SEWER	300 LBS	---	TACTILE STRIP	---	---	---	---
250 WWS	WASTE WATER SEWER	250 WWS	---	RAMP CURB	---	---	---	---
---	GAS	---	---	TEST HOLE	---	---	---	---
---	HYDRO	---	---	GUY WIRE	---	---	---	---
---	M.T.S.	---	---	LIGHT STANDARD	---	---	---	---
150 WM	WATERMAIN	150 WM	---	BACK OF CURB	---	---	---	---
---	HYDRANT	---	---	CONCRETE	---	---	---	---
---	VALVE	---	---	ASPHALT	---	---	---	---
---	MANHOLE	---	---	SIDEWALK	---	---	---	---
---	CATCH BASIN	---	---	PROPERTY LINE	---	---	---	---
---	CURB INLET	---	---	SURVEY BAR	---	---	---	---
---	POLES	---	---	GEODETIC BENCHMARK	---	---	---	---
---	BUILDING	---	---	ELEVATION	---	---	---	---

LOCATION APPROVED UNDERGROUND STRUCTURES

SUPV. U/G STRUCTURES COMMITTEE DATE

NOTE: LOCATION OF UNDERGROUND STRUCTURES AS SHOWN ARE BASED ON THE BEST INFORMATION AVAILABLE BUT NO GUARANTEE IS GIVEN THAT ALL EXISTING UTILITIES ARE SHOWN OR THAT THE GIVEN LOCATIONS ARE EXACT. CONFIRMATION OF EXISTENCE AND EXACT LOCATION OF ALL SERVICES MUST BE OBTAINED FROM THE INDIVIDUAL UTILITIES BEFORE PROCEEDING WITH CONSTRUCTION.

B.M. KGS BASE ELEV.

DWG'S BASED ON C.S.R.S. NAD 83 SYSTEM, UTM GRID

NO. REVISIONS

DATE

BY

KGS GROUP CONSULTING ENGINEERS

DESIGNED BY: AKW

CHECKED BY: CR

DRAWN BY: DMW

APPROVED BY: [Signature]

HOR. SCALE: 1:250

VERTICAL: 1:50

RELEASED FOR CONSTRUCTION: [Signature]

DATE: 13/02/21

ENGINEER'S SEAL

M.C. ROWBOTHAM

REGISTERED PROFESSIONAL ENGINEER

22679

MAY 28, 2014

CONSULTANT DRAWING NO. 13-0107-005_P-3357-01

THE CITY OF WINNIPEG PUBLIC WORKS DEPARTMENT TRANSPORTATION ENGINEERING DIVISION

PROJECT TITLE: CENTURY ST. NORTHBOUND MILL & FILL AND NEW CONSTRUCTION SASKATCHEWAN AVE TO 200m SOUTH

SHEET OF: 01 OF 06

COMPUTER FILE NAME: CENTURY_SASK_PLOT

CITY DRAWING NUMBER: P-3357-01

APEGM

Certificate of Authorization

KGS Group

No. 245