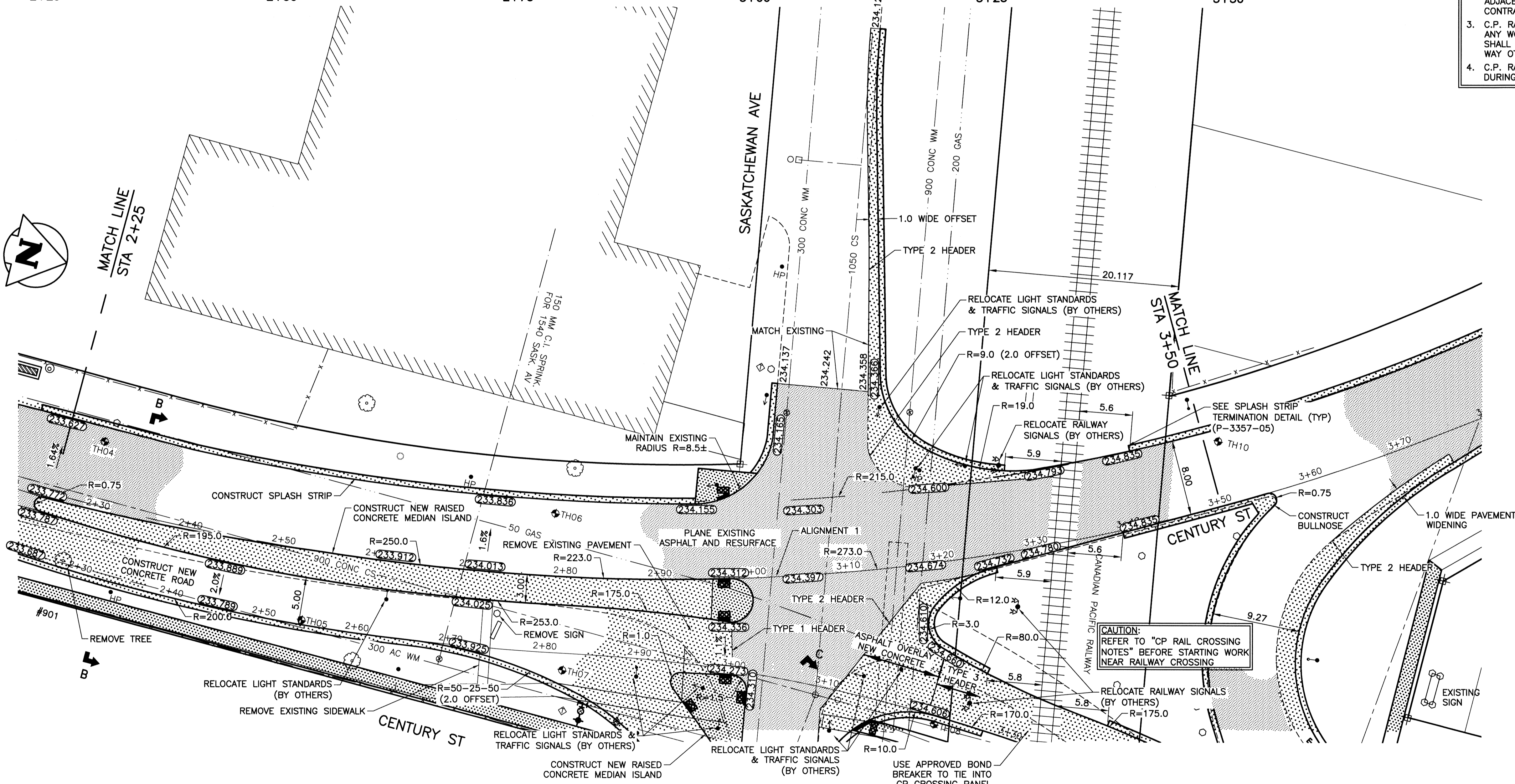


- GENERAL NOTES:**
- ADJUST MH AND CB RIMS TO NEW GRADES.
  - DESIGN GRADES TO BE CONFIRMED BY KGS GROUP AFTER ASPHALT PLANING OF EACH LANE.
  - AVOID DAMAGE TO EXISTING TREES EXCEPT THOSE IDENTIFIED FOR REMOVAL.
  - ALL PAVEMENT MEASUREMENTS ARE TO BACK OF CURB. WHERE SPLASH STRIP CURB IS SPECIFIED, BACK OF CURB IS TO BE REFERENCED 600 FROM THE BACK OF THE SPLASH STRIP TOWARD THE CURB FACE.
  - ISOLATE ALL POLES, BASES AND PILES WITHIN SIDEWALKS AND SPLASH STRIP (SD-228C).
  - THE CONTRACTOR SHALL INSTALL SIGN CLAMPS AT THE LOCATIONS SHOWN ON THE DRAWINGS AND WHERE DIRECTED IN THE FIELD BY THE CONTRACT ADMINISTRATOR.

- C.P. RAILWAY CROSSING NOTES:**
- ALL WORK WITHIN C.P. RIGHT OF WAY SHALL CONFORM TO "MINIMUM SAFETY REQUIREMENTS FOR CONTRACTORS WORKING ON C.P. PROPERTY IN CANADA" SEPTEMBER 2010.
  - TRACK AND CROSSING PANELS TO BE INSTALLED BY CP. ADJACENT PAVEMENT TO BE CONSTRUCTED BY CONTRACTOR.
  - C.P. RAIL SAFETY WATCH IS REQUIRED FULL TIME FOR ANY WORK WITHIN CP RIGHT OF WAY. THE CONTRACTOR SHALL NOT PERFORM ANY WORK IN THE CP RIGHT OF WAY OTHERWISE.
  - C.P. RAIL WILL RELOCATE RAIL CROSSING SIGNALS DURING CONSTRUCTION PERIOD.



**PROPERTY LIMITS DELINEATION**

DELINEATION OF PROPERTY LIMITS AS SHOWN ON THIS DWG DOES NOT REPRESENT A "LEGAL SURVEY". KGS GROUP MAKES NO REPRESENTATION OR WARRANTY AS TO THE ACCURACY OF PROPERTY LIMITS DELINEATED ON THIS DWG, NOR ON THE DIMENSIONAL ACCURACY OF DWG FEATURES RELATIVE TO THOSE PROPERTY LIMITS.

**WARNING**

- NOTIFY THE GAS COMPANY OF THE PROPOSED LOCATION OF EXCAVATION.
- TAKE PRECAUTION TO AVOID DAMAGE TO GAS COMPANY INSTALLATIONS.
- SEE PROVINCIAL REGULATION 210/72 FOR DETAILS.

**METRIC**

WHOLE NUMBERS INDICATE MILLIMETRES  
DECIMALIZED NUMBERS INDICATE METRES

**APEGM**

Certificate of Authorization  
KGS Group  
No. 245

300 LDS	LAND DRAINAGE SEWER	300 LDS		TACTILE STRIP	
250 WWS	WASTE WATER SEWER	250 WWS		RAMP CURB	
	GAS		⊕	TEST HOLE	
	HYDRO		---	GUY WIRE	
	M.T.S.		---	LIGHT STANDARD	
150 WM	WATERMAIN	150 WM	⊕	PEDESTAL	
	HYDRANT		⊕	BACK OF CURB	
	VALVE		⊕	CONCRETE	
	MANHOLE		⊕	ASPHALT	
	CATCH BASIN		⊕	SIDEWALK	
	CURB INLET		⊕	PROPERTY LINE	
	POLES		⊕	SURVEY BAR	
	BUILDING		⊕	GEODETIC BENCHMARK	
			⊕	ELEVATION	231.334
EXISTING	LEGEND-PLAN	PROPOSED	EXISTING	LEGEND-PROFILE	PROPOSED

**LOCATION APPROVED UNDERGROUND STRUCTURES**

SUPV. U/G STRUCTURES DATE COMMITTEE

NOTE:  
LOCATION OF UNDERGROUND STRUCTURES AS SHOWN ARE BASED ON THE BEST INFORMATION AVAILABLE BUT NO GUARANTEE IS GIVEN THAT ALL EXISTING UTILITIES ARE SHOWN OR THAT THE GIVEN LOCATIONS ARE EXACT. CONFIRMATION OF EXISTENCE AND EXACT LOCATION OF ALL SERVICES MUST BE OBTAINED FROM THE INDIVIDUAL UTILITIES BEFORE PROCEEDING WITH CONSTRUCTION.

B.M. KGS BASE ELEV.      DWG'S BASED ON C.S.R.S. NAD 83 SYSTEM, UTM GRID

**KGS GROUP**  
CONSULTING ENGINEERS

DESIGNED BY: AKW      CHECKED BY: CR  
DRAWN BY: DMW      APPROVED BY: PPH  
HOR. SCALE: 1:250      RELEASED FOR CONSTRUCTION:  
VERTICAL: 1:50      DATE: 13/02/21

ISSUED FOR TENDER: 14/05/28      DATE: 13/02/21

ENGINEER'S SEAL  
PROVINCE OF MANITOBA  
M.C. ROWBOOTHAN  
22679  
MAY 28 2014  
CONSULTANT DRAWING NO.  
13-0107-005\_P-3357-02

**THE CITY OF WINNIPEG**  
PUBLIC WORKS DEPARTMENT  
TRANSPORTATION ENGINEERING DIVISION

PROJECT TITLE  
CENTURY ST. NORTHBOUND MILL & FILL AND NEW CONSTRUCTION SASKATCHEWAN AVE TO 200m SOUTH

SHEET OF 02 OF 06  
COMPUTER FILE NAME  
CENTURY\_SASK\_PLOT  
CITY DRAWING NUMBER  
P-3357-02

