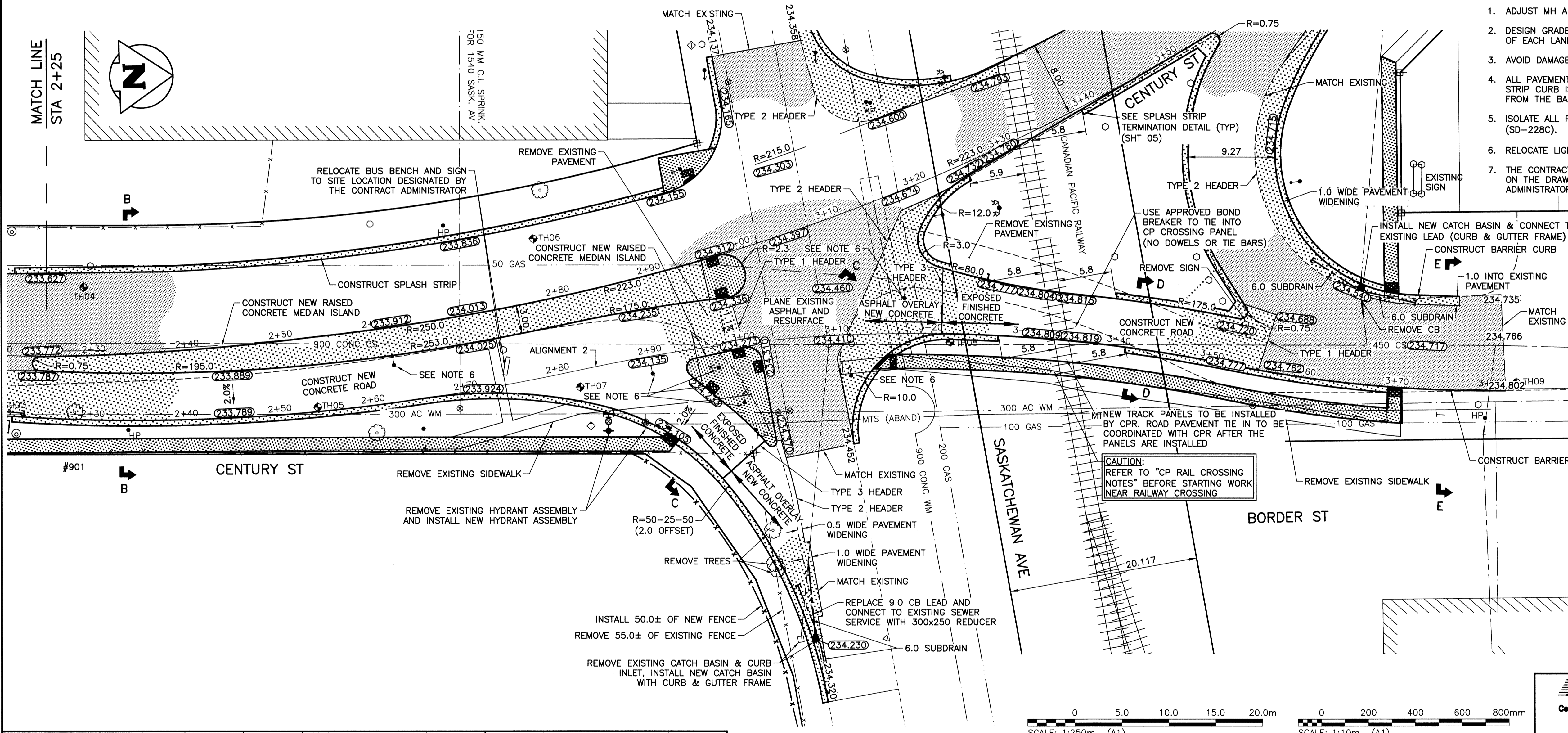


BORDER STREET CUT-OFF - WEST GUTTER & EAST GUTTER (ALIGNMENT 2)

- GENERAL NOTES:**
- ADJUST MH AND CB RIMS TO NEW GRADES.
 - DESIGN GRADES TO BE CONFIRMED BY KGS GROUP AFTER ASPHALT PLANING OF EACH LANE.
 - AVOID DAMAGE TO EXISTING TREES EXCEPT THOSE IDENTIFIED FOR REMOVAL.
 - ALL PAVEMENT MEASUREMENTS ARE TO BACK OF CURB. WHERE SPLASH STRIP CURB IS SPECIFIED, BACK OF CURB IS TO BE REFERENCED 600 FROM THE BACK OF THE SPLASH STRIP TOWARD THE CURB FACE.
 - ISOLATE ALL POLES, BASES AND PILES WITHIN SIDEWALKS AND SPLASH STRIP (SD-228C).
 - RELOCATE LIGHT STANDARDS AND TRAFFIC SIGNALS (BY OTHERS).
 - THE CONTRACTOR SHALL INSTALL SIGN CLAMPS AT THE LOCATIONS SHOWN ON THE DRAWINGS AND WHERE DIRECTED IN THE FIELD BY THE CONTRACT ADMINISTRATOR.

- C.P. RAILWAY CROSSING NOTES:**
- ALL WORK WITHIN C.P. RIGHT OF WAY SHALL CONFORM TO "MINIMUM SAFETY REQUIREMENTS FOR CONTRACTORS WORKING ON C.P. PROPERTY IN CANADA" SEPTEMBER 2010.
 - TRACK AND CROSSING PANELS TO BE INSTALLED BY CP. ADJACENT PAVEMENT TO BE CONSTRUCTED BY CONTRACTOR.
 - C.P. RAIL SAFETY WATCH IS REQUIRED FULL TIME FOR ANY WORK WITHIN CP RIGHT OF WAY. THE CONTRACTOR SHALL NOT PERFORM ANY WORK IN THE CP RIGHT OF WAY OTHERWISE.
 - C.P. RAIL WILL RELOCATE RAIL CROSSING SIGNALS DURING CONSTRUCTION PERIOD.



PROPERTY LIMITS DELINEATION

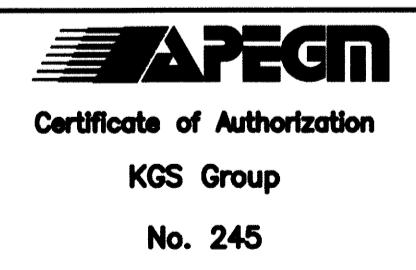
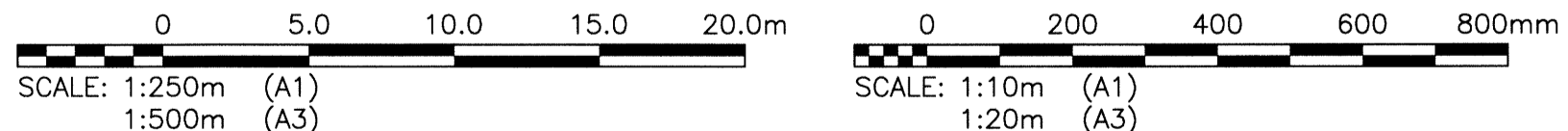
DELINEATION OF PROPERTY LIMITS AS SHOWN ON THIS DWG DOES NOT REPRESENT A "LEGAL SURVEY". KGS GROUP MAKES NO REPRESENTATION OR WARRANTY AS TO THE ACCURACY OF PROPERTY LIMITS DELINEATED ON THIS DWG, NOR ON THE DIMENSIONAL ACCURACY OF DWG FEATURES RELATIVE TO THOSE PROPERTY LIMITS.

WARNING

- NOTIFY THE GAS COMPANY OF THE PROPOSED LOCATION OF EXCAVATION.
- TAKE PRECAUTION TO AVOID DAMAGE TO GAS COMPANY INSTALLATIONS.
- SEE PROVINCIAL REGULATION 210/72 FOR DETAILS.

METRIC

WHOLE NUMBERS INDICATE MILLIMETRES
DECIMALIZED NUMBERS INDICATE METRES



300 LBS	LAND DRAINAGE SEWER	300 LBS	TACTILE STRIP	
250 WWS	WASTE WATER SEWER	250 WWS	RAMP CURB	
	GAS		TEST HOLE	
	HYDRO		GUY WIRE	
	M.T.S.		LIGHT STANDARD	
150 WM	WATERMAIN	150 WM	BACK OF CURB	
	HYDRANT		CONCRETE	
	VALVE		ASPHALT	
	MANHOLE		SIDEWALK	
	CATCH BASIN		PROPERTY LINE	
	CURB INLET		SURVEY BAR	
	POLES		GEODETIC BENCHMARK	
	BUILDING		ELEVATION	
EXISTING	LEGEND-PLAN	PROPOSED	LEGEND-PLAN	PROPOSED

LOCATION APPROVED UNDERGROUND STRUCTURES

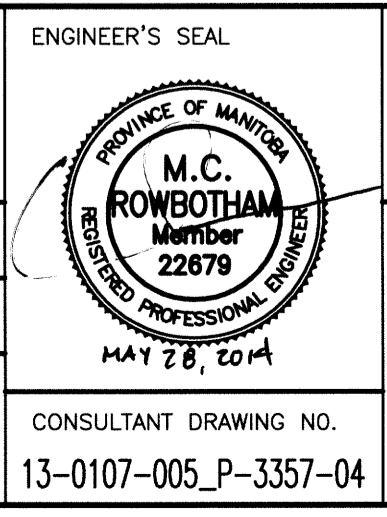
SUPV. U/G STRUCTURES COMMITTEE DATE

NOTE: LOCATION OF UNDERGROUND STRUCTURES AS SHOWN ARE BASED ON THE BEST INFORMATION AVAILABLE. BUT NO GUARANTEE IS GIVEN THAT ALL EXISTING UTILITIES ARE SHOWN OR THAT THE GIVEN LOCATIONS ARE EXACT. CONFIRMATION OF EXISTENCE AND EXACT LOCATION OF ALL SERVICES MUST BE OBTAINED FROM THE INDIVIDUAL UTILITIES BEFORE PROCEEDING WITH CONSTRUCTION.

KGS GROUP CONSULTING ENGINEERS

DESIGNED BY: AKW
DRAWN BY: DMW
HOR. SCALE: 1:250
VERTICAL: 1:50

CHECKED BY: CK
APPROVED BY: 014
RELEASED FOR CONSTRUCTION: DATE



THE CITY OF WINNIPEG PUBLIC WORKS DEPARTMENT TRANSPORTATION ENGINEERING DIVISION

PROJECT TITLE: CENTURY ST. NORTHBOUND MILL & FILL AND NEW CONSTRUCTION SASKATCHEWAN AVE TO 200m SOUTH

SHEET OF: 04 OF 06

COMPUTER FILE NAME: CENTURY_SASK_PLOT

CITY DRAWING NUMBER: P-3357-04

File Name: P:\Projects\2013\13-0107-005\Doc\Control\ToBeIssued\DWG\13-0107-005_P-3357-04_Rev 0.dwg - Tab: P-3357-04 Plotted By: Gloewen 14/05/28 [Wed 10:53am] A1/PLOT SCALE: 1:1