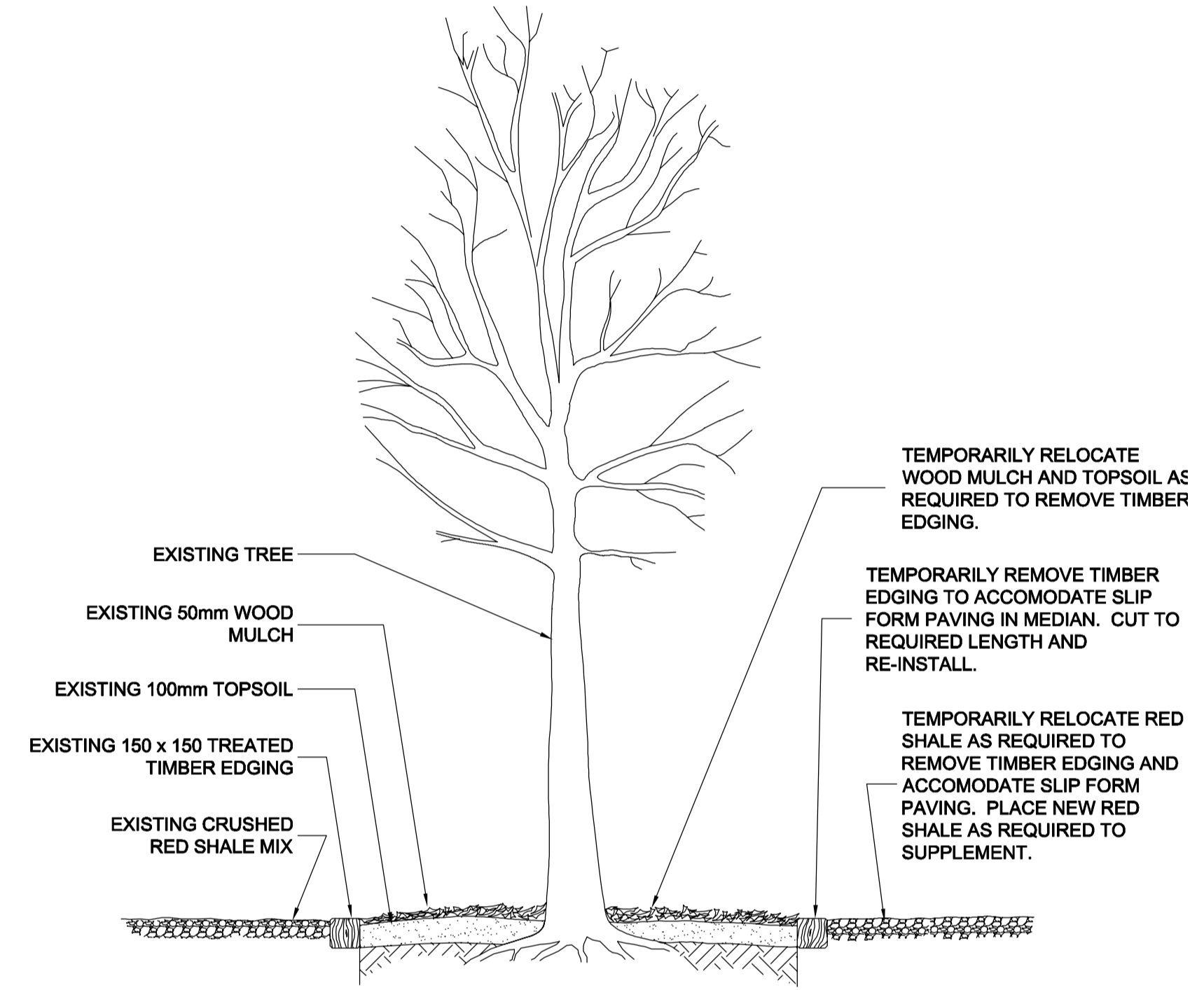
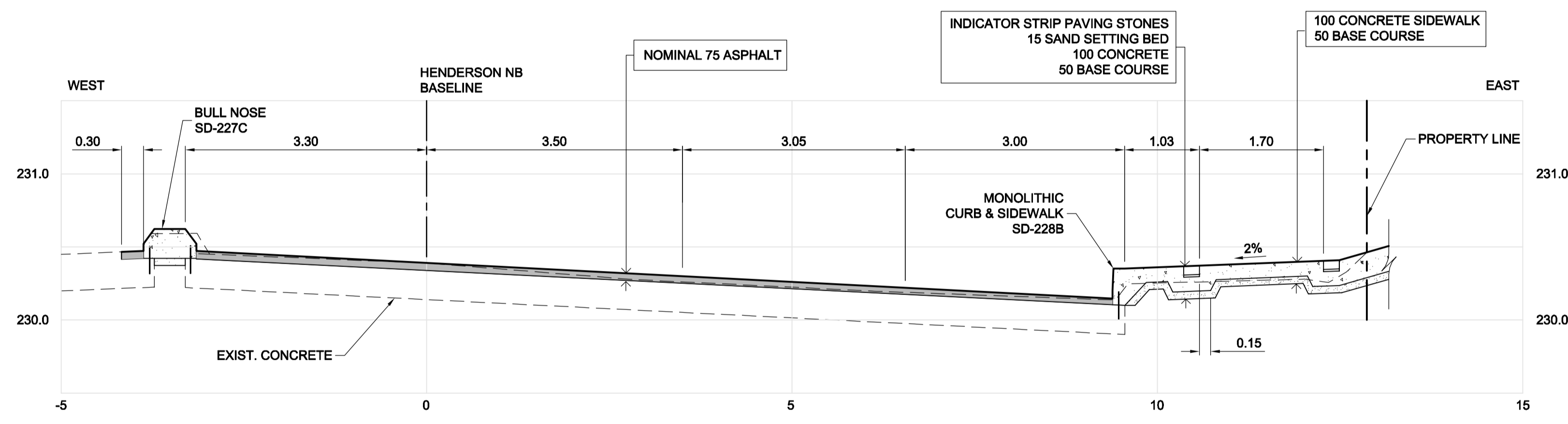


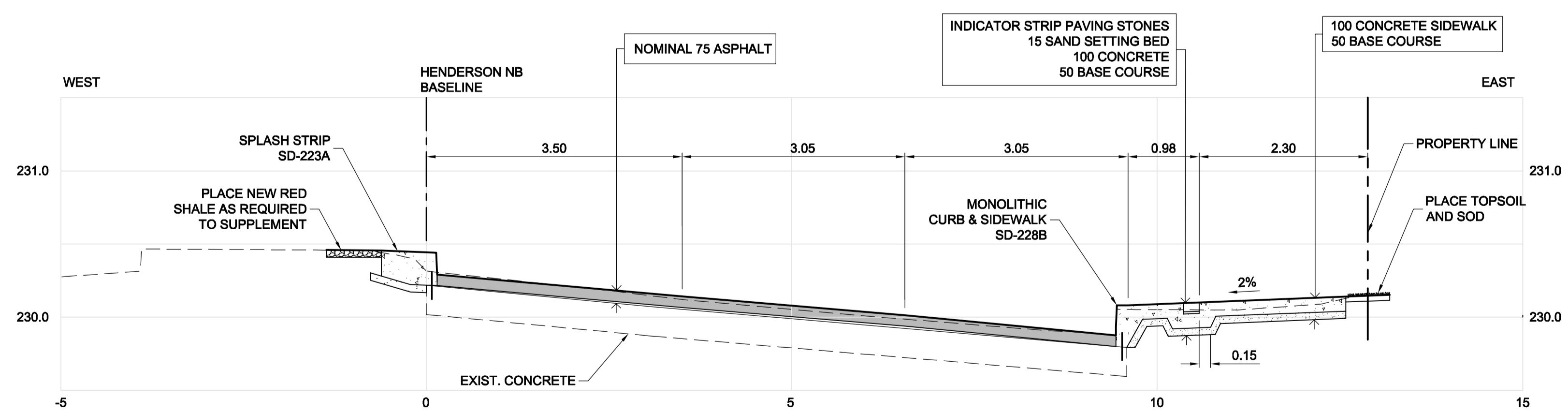
2 AT GRADE CONCRETE BUS PAD
6, 7, 8, 9 | 11 SCALE 1:10



1 DETAIL - WORK IN AREA OF EXIST. MEDIAN TREES
5, 6, 7, 8, 9 | 11 SCALE: NTS



A SECTION STA: 1+220
6 | 11 SCALE: HORZ 1:50 VERT 1:25



B SECTION STA: 1+400
7 | 11 SCALE: HORZ 1:50 VERT 1:25



METRIC

WHOLE NUMBERS INDICATE MILLIMETRES
DECIMALIZED NUMBERS INDICATE METRES

WARNING

IF POWER EQUIPMENT OR EXPLOSIVES ARE TO BE USED FOR EXCAVATION ON THIS PROJECT THE CONTRACTOR MUST:

1. NOTIFY THE GAS COMPANY OF THE PROPOSED LOCATION OF EXCAVATION.
2. TAKE PRECAUTION TO AVOID DAMAGE TO GAS COMPANY INSTALLATIONS SEE PROVINCIAL REGULATION 210/72 FOR DETAILS.
3. OBTAIN EXCAVATION PERMITS PRIOR TO CONSTRUCTION.
4. A MINIMUM VERTICAL SEPARATION OF 300 mm FROM GAS MAINS AND 100 mm FROM GAS SERVICE MUST BE MAINTAINED BETWEEN ANY MANITOBA HYDRO FACILITY AND ANY NEW INSTALLATIONS.
5. A MINIMUM 900 mm OF COVER SHALL BE MAINTAINED IN ALL AREAS WHERE EQUIPMENT WILL BE CROSSING, TRAVELING OR COMPACTING OVER THE HIGH PRESSURE GAS MAINS.
6. IF EQUIPMENT MUST CROSS, TRAVEL, OR COMPACT OVER THE GAS MAIN WITH LESS THAN THE MINIMUM DEPTH COVER, EARTH BRIDGING OR STEEL PLATES SHALL BE PLACED OVER THE MAIN AND EXTEND A MINIMUM OF 1.0 METRE ON EITHER SIDE AT EACH CROSSING LOCATION.

G:\CAD\149129\Contract\1\Current\Cross-Sections.dwg

150 WM	150 WM	MTS	M.T.S.	MTS	150 mm W.M.	150 mm W.M.
WATERMAIN	HYDRANT VALVE	LAND DRAINAGE SEWER	WASTE WATER SEWER	MANHOLE	CATCH BASIN	TEST HOLES
JUNCTIONS	CULVERT	100 GAS	EXISTING	LEGEND-PLAN	PROPOSED	EXISTING
CONCRETE	ASPHALT	PLANING	SIDEWALK	PAVING STONES	PROPERTY LINE	SURVEY BAR
CURB RAMP	DITCH	SWALE	LEGEND-PLAN	PROPOSED	EXISTING	LEGEND-PROFILE
PROPOSED	PROPOSED	EXISTING	LEGEND-PROFILE	PROPOSED	EXISTING	LEGEND-PROFILE

UNDERGROUND STRUCTURES

SUPPLY U/G STRUCTURES COMMITTEE DATE

NOTE:
LOCATION OF UNDERGROUND STRUCTURES AS SHOWN ARE BASED ON THE BEST INFORMATION AVAILABLE BUT NO GUARANTEE IS GIVEN THAT ALL EXISTING UTILITIES ARE SHOWN OR THAT THE GIVEN LOCATIONS ARE EXACT. CONFIRMATION OF EXISTENCE AND EXACT LOCATION OF ALL SERVICES MUST BE OBTAINED FROM THE INDIVIDUAL UTILITIES BEFORE PROCEEDING WITH CONSTRUCTION.

B.M. 654540 N: 55.9133.240 E: 634706.783
ELEV. 230.732 m

DESIGNED BY	DBW
DRAWN BY	PMW
CHECKED BY	PMW
APPROVED BY	DBW
HOR. SCALE	AS NOTED
VERTICAL	AS NOTED
1 ISSUED FOR TENDER	14/06/12 DBW
NO. REVISIONS	DATE BY

DESIGN TEAM

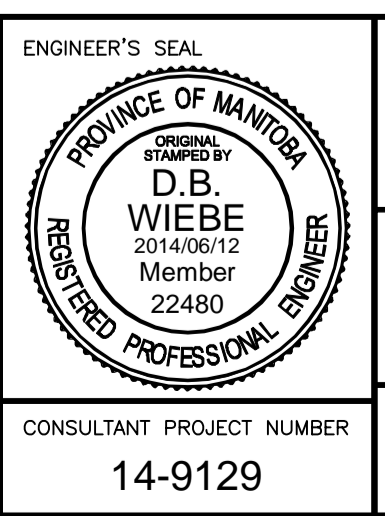
DILLON CONSULTING

RELEASED FOR CONSTRUCTION

ENGINEER'S SEAL

PROVINCE OF MANITOBA
REGISTERED PROFESSIONAL ENGINEER
D.B. WIEBE
2014/06/12
Member 22480

CONSULTANT PROJECT NUMBER
14-9129



THE CITY OF WINNIPEG PUBLIC WORKS DEPARTMENT

2014 REGIONAL STREETS PROGRAM:
HENDERSON HWY NORTHBOUND
MCLEOD AVE TO SPRINGFIELD RD
MAJOR REHABILITATION

CITY DRAWING NUMBER
P-3357-11

SHEET **11** OF **11**

CONSULTANT DRAWING NUMBER

DETAILS AND CROSS SECTIONS