

**METRIC**

WHOLE NUMBERS INDICATE MILLIMETRES  
DECIMALIZED NUMBERS INDICATE METRES

**WARNING**

IF POWER EQUIPMENT OR EXPLOSIVES ARE TO BE USED FOR EXCAVATION ON THIS PROJECT THE CONTRACTOR MUST:

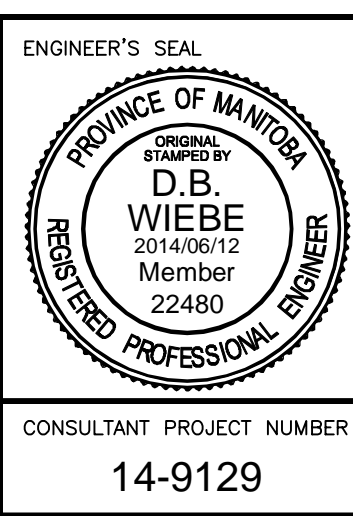
1. NOTIFY THE GAS COMPANY OF THE PROPOSED LOCATION OF EXCAVATION.
2. TAKE PRECAUTION TO AVOID DAMAGE TO GAS COMPANY INSTALLATIONS SEE PROVINCIAL REGULATION 210/72 FOR DETAILS.
3. OBTAIN EXCAVATION PERMITS PRIOR TO CONSTRUCTION.
4. A MINIMUM VERTICAL SEPARATION OF 300 mm FROM GAS MAINS AND 100 mm FROM GAS SERVICE MUST BE MAINTAINED BETWEEN ANY MANITOBA HYDRO FACILITY AND ANY NEW INSTALLATIONS.
5. A MINIMUM 900 mm OF COVER SHALL BE MAINTAINED IN ALL AREAS WHERE EQUIPMENT WILL BE CROSSING, TRAVELING OR COMPACTING OVER THE HIGH PRESSURE GAS MAINS.
6. IF EQUIPMENT MUST CROSS, TRAVEL, OR COMPACT OVER THE GAS MAIN WITH LESS THAN THE MINIMUM DEPTH COVER, EARTH BRIDGING OR STEEL PLATES SHALL BE PLACED OVER THE MAIN AND EXTEND A MINIMUM OF 1.0 METRE ON EITHER SIDE AT EACH CROSSING LOCATION.

150 WM	WATERMAIN	150 WM	MTS	M.T.S.	MTS	150 mm W.M.	WATERMAIN	150 mm W.M.
⊕	HYDRANT VALVE	⊕	MTS	CONCRETE ASPHALT PLANING	MTS	300 mm L.D.S.	HYDRANT VALVE	300 mm L.D.S.
⊗	LAND DRAINAGE SEWER	⊗	MTS	PAVING STONES	MTS	250 mm W.W.S.	LAND DRAINAGE SEWER	300 mm L.D.S.
⊙	WASTE WATER SEWER	⊙	MTS	PROPERTY LINE SURVEY BAR	MTS	250 mm W.W.S.	WASTE WATER SEWER	250 mm W.W.S.
○	MANHOLE	●	MTS	CURB RAMP	MTS	250 mm W.W.S.	MANHOLE	250 mm W.W.S.
⊕	CATCH BASIN	⊕	MTS	DITCH	MTS	250 mm W.W.S.	CATCH BASIN	250 mm W.W.S.
⊕	TEST HOLES	⊕	MTS	SWALE	MTS	250 mm W.W.S.	TEST HOLES	250 mm W.W.S.
⊕	JUNCTIONS	⊕	MTS	EXISTING	MTS	250 mm W.W.S.	JUNCTIONS	250 mm W.W.S.
⊕	CULVERT	⊕	MTS	PROPOSED	MTS	250 mm W.W.S.	CULVERT	250 mm W.W.S.
⊕	100 GAS	⊕	MTS	EXISTING	MTS	250 mm W.W.S.	100 GAS	250 mm W.W.S.
⊕	EXISTING	⊕	MTS	PROPOSED	MTS	250 mm W.W.S.	EXISTING	250 mm W.W.S.

150 WM	WATERMAIN	150 mm W.M.
⊕	HYDRANT VALVE	300 mm L.D.S.
⊗	LAND DRAINAGE SEWER	300 mm L.D.S.
⊙	WASTE WATER SEWER	250 mm W.W.S.
○	MANHOLE	250 mm W.W.S.
⊕	CATCH BASIN	250 mm W.W.S.
⊕	TEST HOLES	250 mm W.W.S.
⊕	JUNCTIONS	250 mm W.W.S.
⊕	CULVERT	250 mm W.W.S.
⊕	100 GAS	250 mm W.W.S.
⊕	EXISTING	250 mm W.W.S.
⊕	PROPOSED	250 mm W.W.S.

UNDERGROUND STRUCTURES		B.M. 654540	N. 55.9133.240	E. 634706.783
SUPPLY, U/G STRUCTURES COMMITTEE		ELEV. 230.732 m		
DATE				
NOTE:		LOCATION OF UNDERGROUND STRUCTURES AS SHOWN ARE BASED ON THE BEST INFORMATION AVAILABLE, BUT NO GUARANTEE IS GIVEN THAT ALL EXISTING UTILITIES ARE SHOWN OR THAT THE GIVEN LOCATIONS ARE EXACT. CONFIRMATION OF EXISTENCE AND EXACT LOCATION OF ALL SERVICES MUST BE OBTAINED FROM THE INDIVIDUAL UTILITIES BEFORE PROCEEDING WITH CONSTRUCTION.		
1	ISSUED FOR TENDER	14/06/12	DBW	
NO.	REVISIONS	DATE	BY	

DESIGNED BY	PMW
DRAWN BY	PMW
CHECKED BY	GP
APPROVED BY	DBW
HOR. SCALE	1:250
VERTICAL	
DATE	2014/06/12



2014 REGIONAL STREETS PROGRAM: HENDERSON HWY NORTHBOUND McLEOD AVE TO SPRINGFIELD RD MAJOR REHABILITATION	
CITY DRAWING NUMBER	P-3357-3
SHEET	3 OF 11
HORIZONTAL GEOMETRY	
STA: 1+395 TO 1+735	
CONSULTANT PROJECT NUMBER	14-9129
CONSULTANT DRAWING NUMBER	

G:\CAD\149129\_1\Contract\Horizontal\Geometry.dwg