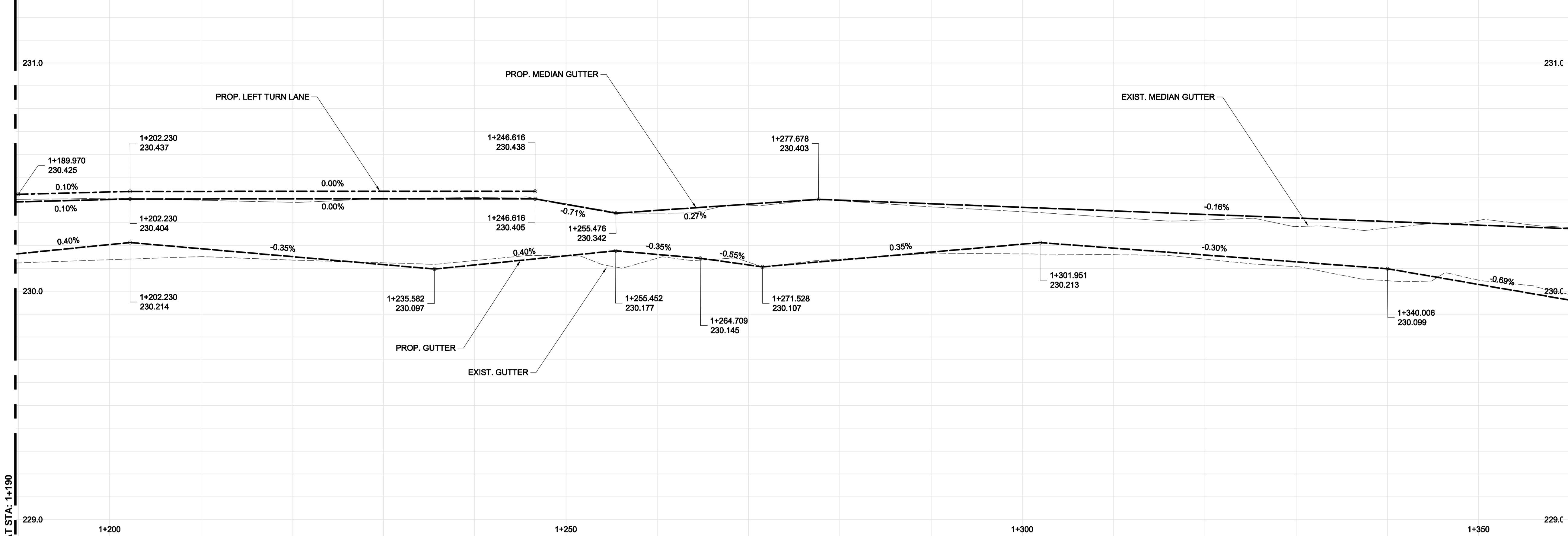


HENDERSON HWY NB



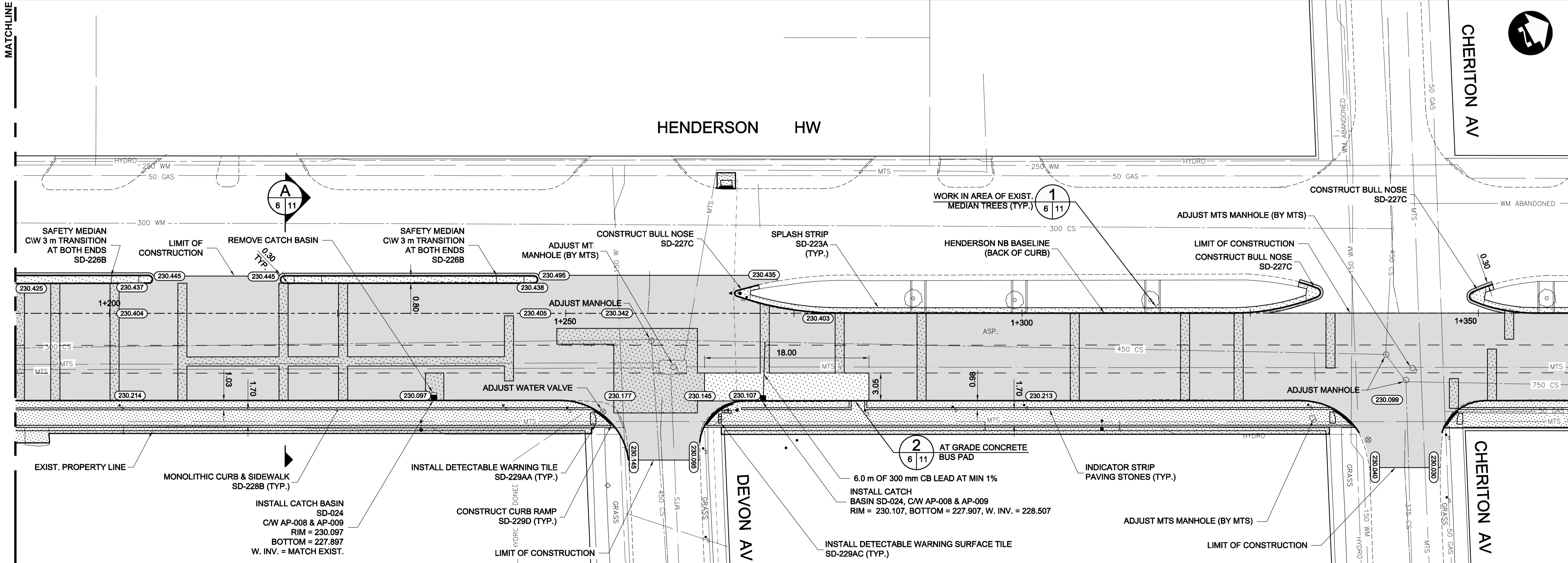
CONSTRUCTION NOTES:

1. MONOLITHIC CURB AND SIDEWALK SD-228B AND SPLASH STRIP SD-223A HEIGHT IS 150 mm UNLESS DIRECTED BY CONTRACT ADMINISTRATOR.
2. SEE SHEET 11 FOR TYPICAL CROSS SECTIONS AND DETAILS.
3. ALL DIMENSIONS ARE TO BACK OF CURB.
4. ISOLATE MISCELLANEOUS ITEMS IN NEW CONCRETE WORKS AS PER SD-220B AND SD-228C
5. PLANE EXISTING ASPHALT OVERLAY WITHIN LIMITS OF CONSTRUCTION TO DEPTH INDICATED BY CONTRACT ADMINISTRATOR.
6. LEGAL PLAN AND UNDERGROUND INFORMATION FROM THE CITY OF WINNIPEG LBIS.
7. LIMITS OF CURB, SIDEWALK, JOINT AND SLAB REPAIR, AND TIE-INS TO BE FINALIZED IN THE FIELD BY THE CONTRACT ADMINISTRATOR.
8. ADJUST ALL WATER VALVES, MANHOLES, AND DRAINAGE INLETS WITHIN LIMITS OF CONSTRUCTION.
9. PLACE CRUSHED RED SHALE MIX IN MEDIAN TO MATCH NEW TOP OF CURB GRADE AS NECESSARY.

MATCHLINE AT STA: 1+190

MATCHLINE AT STA: 1+360

HENDERSON HW



METRIC

WHOLE NUMBERS INDICATE MILLIMETRES  
DECIMALIZED NUMBERS INDICATE METRES

WARNING

IF POWER EQUIPMENT OR EXPLOSIVES ARE TO BE USED FOR EXCAVATION ON THIS PROJECT THE CONTRACTOR MUST:

1. NOTIFY THE GAS COMPANY OF THE PROPOSED LOCATION OF EXCAVATION.
2. TAKE PRECAUTION TO AVOID DAMAGE TO GAS COMPANY INSTALLATIONS SEE PROVINCIAL REGULATION 210/72 FOR DETAILS.
3. OBTAIN EXCAVATION PERMITS PRIOR TO CONSTRUCTION.
4. A MINIMUM VERTICAL SEPARATION OF 300 mm FROM GAS MAINS AND 100 mm FROM GAS SERVICE MUST BE MAINTAINED BETWEEN ANY MANITOBA HYDRO FACILITY AND ANY NEW INSTALLATIONS.
5. A MINIMUM 900 mm OF COVER SHALL BE MAINTAINED IN ALL AREAS WHERE EQUIPMENT WILL BE CROSSING, TRAVELING OR COMPACTING OVER THE HIGH PRESSURE GAS MAINS.
6. IF EQUIPMENT MUST CROSS, TRAVEL, OR COMPACT OVER THE GAS MAIN WITH LESS THAN THE MINIMUM DEPTH COVER, EARTH BRIDGING OR STEEL PLATES SHALL BE PLACED OVER THE MAIN AND EXTEND A MINIMUM OF 1.0 METRE ON EITHER SIDE AT EACH CROSSING LOCATION.

G:\CAD\149129\_1\Contract\Plan\_Profile.dwg

EXISTING	LEGEND-PLAN	PROPOSED	EXISTING	LEGEND-PLAN	PROPOSED	EXISTING	LEGEND-PROFILE	PROPOSED
	WATERMAIN			M.T.S.			WATERMAIN	
	HYDRANT VALVE			CONCRETE			ASPHALT	
	LAND DRAINAGE SEWER			WASTE WATER SEWER			LAND DRAINAGE SEWER	
	WASTE WATER SEWER			MANHOLE			WASTE WATER SEWER	
	CATCH BASIN			PAVING STONES			PROPERTY LINE	
	TEST HOLES			SURVEY BAR			CURB RAMP	
	JUNCTIONS			DITCH			NORTH/WEST T/LANE	
	CULVERT			SWALE			SOUTH/EAST T/LANE	
	GAS							

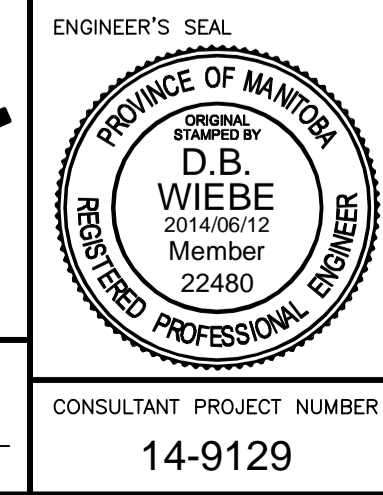
UNDERGROUND STRUCTURES

SUPPLY U/G STRUCTURES COMMITTEE DATE

NOTE:  
LOCATION OF UNDERGROUND STRUCTURES AS SHOWN ARE BASED ON THE BEST INFORMATION AVAILABLE BUT NO GUARANTEE IS GIVEN THAT ALL EXISTING UTILITIES ARE SHOWN OR THAT THE GIVEN LOCATIONS ARE EXACT. CONFIRMATION OF EXISTENCE AND EXACT LOCATION OF ALL SERVICES MUST BE OBTAINED FROM THE INDIVIDUAL UTILITIES BEFORE PROCEEDING WITH CONSTRUCTION.

B.M. 654540	N. 55.9133.240	E. 634706.783
ELEV. 230.732 m		
1	ISSUED FOR TENDER	14/06/12
NO.	REVISIONS	DATE

DESIGNED BY	GP
DRAWN BY	PMW
CHECKED BY	PMW
APPROVED BY	DBW
HOR. SCALE	1:250
VERTICAL	1:10
DATE	2014/06/12



**THE CITY OF WINNIPEG**  
PUBLIC WORKS DEPARTMENT

2014 REGIONAL STREETS PROGRAM:  
HENDERSON HWY NORTHBOUND  
McLEOD AVE TO SPRINGFIELD RD  
MAJOR REHABILITATION

PLAN AND PROFILE  
STA: 1+190 TO 1+360

CITY DRAWING NUMBER  
P-3357-6

SHEET 6 OF 11

CONSULTANT DRAWING NUMBER