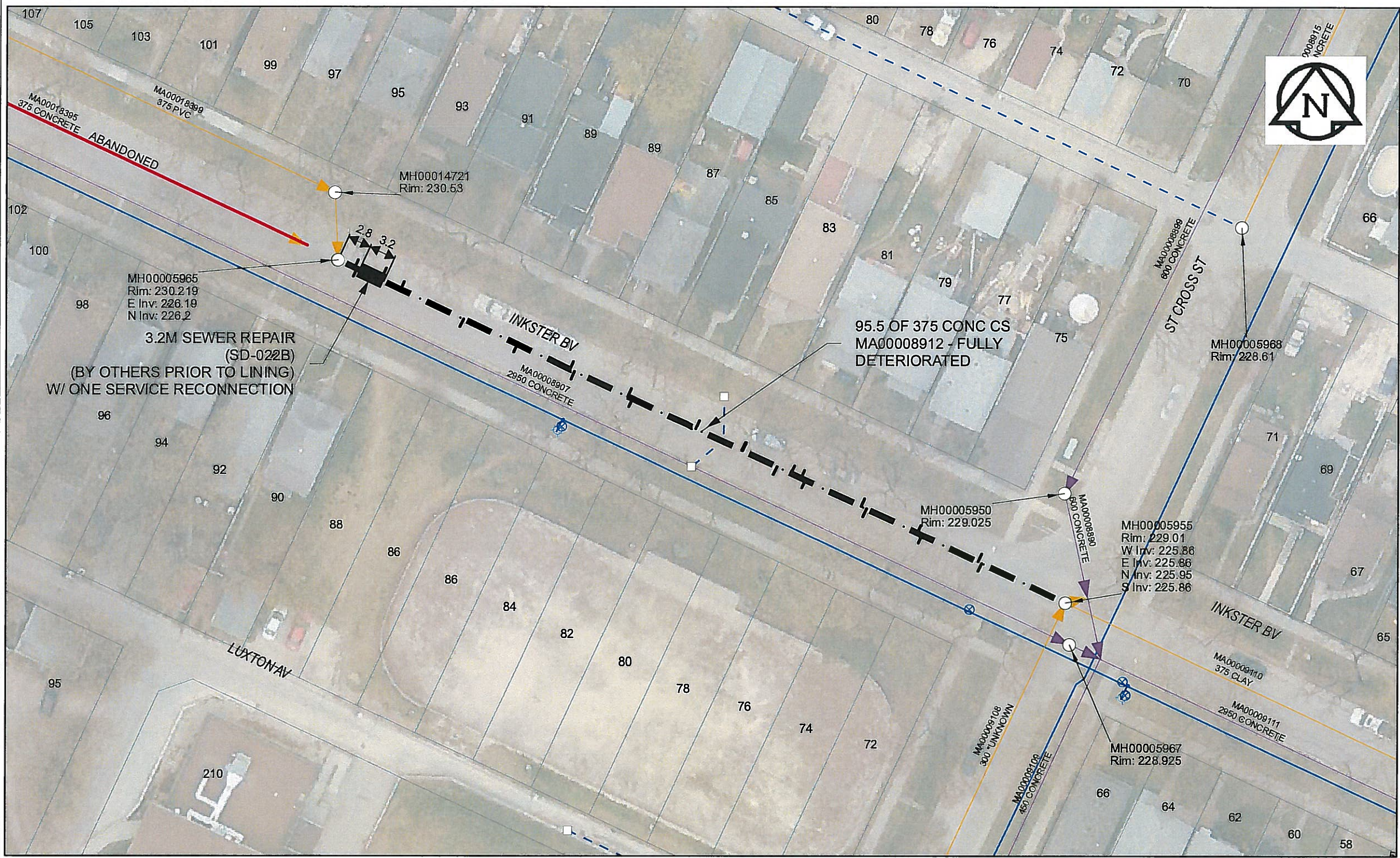


B SIZE 11" X 17" (279mm x 432mm)



**Sewer Junction Information**  
(From Video Inspection)

Reference MH	Distance	Size	Clock
S-MH00005965	002.2	150	11
-	002.5	150	02
-	005.6	150	10
-	008.3	150	10
-	016.5	150	02
-	023.5	150	02
-	030.5	150	10
-	031.1	150	02
-	038.1	150	10
-	038.7	150	02
-	047.0	150	10
-	053.1	150	10
-	053.2	150	10
-	057.6	250	02
-	059.5	250	10
-	060.8	150	10
-	061.4	150	02
-	068.7	150	10
-	069.4	150	02
-	076.1	150	10
-	076.7	150	02
-	084.1	150	10
-	084.6	150	02

**WARNING**  
IF POWER EQUIPMENT OR EXPLOSIVES ARE TO BE USED FOR EXCAVATION ON THIS PROJECT, THE CONTRACTOR MUST:  
1) NOTIFY THE GAS COMPANY OF THE PROPOSED LOCATION OF EXCAVATION.  
2) TAKE PRECAUTION TO AVOID DAMAGE TO GAS COMPANY INSTALLATIONS.  
SEE PROVINCIAL REGULATION 140/92 FOR DETAILS

**APEGM**  
Certificate of Authorization  
AECOM Canada Ltd.  
No. 4671 Date: *07 Jan 2015*

**METRIC**  
WHOLE NUMBERS INDICATE MILLIMETRES  
DECIMALIZED NUMBERS INDICATE METRES  
0 2.5 5 10 15 20  
Meters

BID OPPORTUNITY NO. 557-2014

AECOM REVIEW DRAFT CHK

LOCATION APPROVED UNDERGROUND STRUCTURES  
Can-Net GPS Reference Station WINN/810  
SUPR. U/G STRUCTURES COMMITTEE DATE  
NOTE: LOCATION OF UNDERGROUND STRUCTURES AS SHOWN ARE BASED ON THE BEST INFORMATION AVAILABLE. BUT NO GUARANTEE IS GIVEN THAT ALL EXISTING UTILITIES ARE SHOWN OR THAT THE GIVEN LOCATIONS ARE EXACT. CONFIRMATION OF EXISTENCE AND EXACT LOCATION OF ALL SERVICES MUST BE OBTAINED FROM THE INDIVIDUAL UTILITIES BEFORE PROCEEDING WITH CONSTRUCTION.

NO.	ISSUED FOR TENDER	DATE	BY
0	ISSUED FOR TENDER	14/12/04	JD
	REVISIONS	YY/MM/DD	BY

**AECOM**

DESIGNED BY	PL	CHECKED BY	<i>[Signature]</i>
DRAWN BY	JD	APPROVED BY	<i>[Signature]</i>
HOR. SCALE	1:500	RELEASED FOR CONSTRUCTION	<i>[Signature]</i>
VERT. SCALE	N/A	DATE	<i>07 Jan 15</i>

PROFESSIONAL'S SEAL  
PROVINCE OF MANITOBA  
K.W. FITCHETT  
Jan 8/15  
REGISTERED ENGINEER  
CONSULTANT DRAWING NO. 80321545-01-C-2014 Lining-ROX.mxd

**THE CITY OF WINNIPEG**  
WATER AND WASTE DEPARTMENT  
2014 SEWER RENEWALS  
BY CIPP LINING  
CONTRACT 11  
INKSTER BV  
1ST MH W OF ST CROSS ST TO MH AT ST CROSS ST

SHEET 2 OF 61  
CITY DRAWING NUMBER  
**10744** REV 0