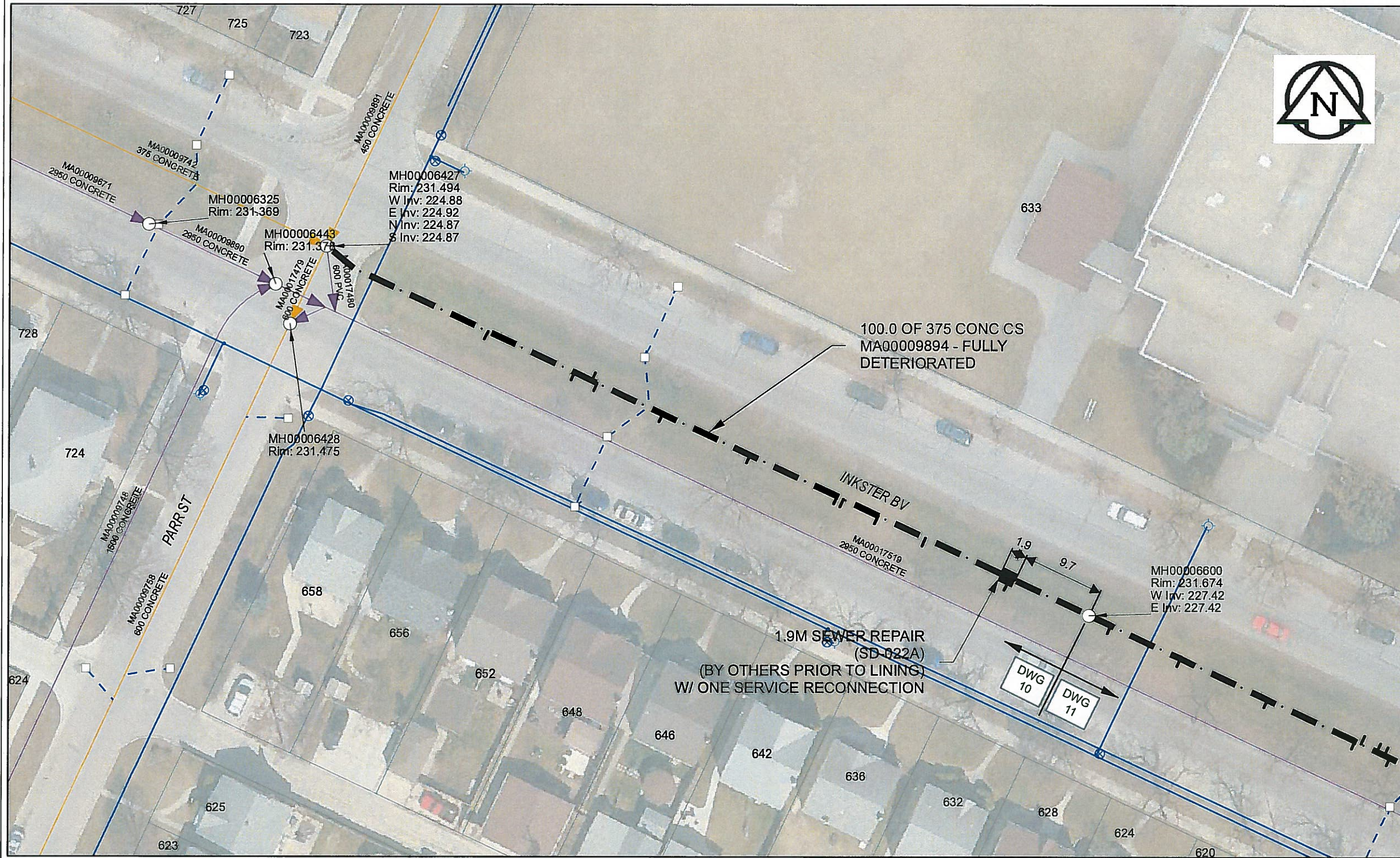


B SIZE 11" X 17" (279mm x 432mm)



Sewer Junction Information
(From Video Inspection)

Reference MH	Distance	Size	Clock
S-MH00006600	010.8	150	10
-	021.4	150	11
-	027.6	150	10
-	032.2	150	11
-	033.0	150	11
-	044.4	150	11
-	055.8	150	11
-	064.4	250	10
-	065.1	250	02
-	067.4	150	11
-	078.7	150	11

WARNING
IF POWER EQUIPMENT OR EXPLOSIVES ARE TO BE USED FOR EXCAVATION ON THIS PROJECT, THE CONTRACTOR MUST:
1) NOTIFY THE GAS COMPANY OF THE PROPOSED LOCATION OF EXCAVATION.
2) TAKE PRECAUTION TO AVOID DAMAGE TO GAS COMPANY INSTALLATIONS.
SEE PROVINCIAL REGULATION 140/92 FOR DETAILS

APEGM
Certificate of Authorization
AECOM Canada Ltd.
No. 4671 Date: 07 Jan 2015

METRIC
WHOLE NUMBERS INDICATE MILLIMETRES
DECIMALIZED NUMBERS INDICATE METRES

BID OPPORTUNITY NO. 557-2014

AECOM REVIEW DRFT CHK

FILE NAME: 2014 Lining.pdf SAVED BY: JD

LOCATION APPROVED UNDERGROUND STRUCTURES

Can-Net GPS Reference Station WINN/810

NO.	ISSUED FOR TENDER	DATE	BY
0	ISSUED FOR TENDER	14/12/04	JD

NOTE: LOCATION OF UNDERGROUND STRUCTURES AS SHOWN ARE BASED ON THE BEST INFORMATION AVAILABLE. BUT NO GUARANTEE IS GIVEN THAT ALL EXISTING UTILITIES ARE SHOWN OR THAT THE GIVEN LOCATIONS ARE EXACT. CONFIRMATION OF EXISTENCE AND EXACT LOCATION OF ALL SERVICES MUST BE OBTAINED FROM THE INDIVIDUAL UTILITIES BEFORE PROCEEDING WITH CONSTRUCTION.

AECOM

DESIGNED BY	PL	CHECKED BY	<i>[Signature]</i>
DRAWN BY	JD	APPROVED BY	<i>[Signature]</i>
HOR. SCALE	1:500	RELEASED FOR CONSTRUCTION	<i>[Signature]</i>
VERT. SCALE	N/A	DATE	Jan 8/15

PROFESSIONAL'S SEAL
PROVINCE OF MANITOBA
K.W. FITCHETT
Jan 8/15
REGISTERED ENGINEER
CONSULTANT DRAWING NO. 60321545-01-C-2014 Lining-R0X.mxd

THE CITY OF WINNIPEG WATER AND WASTE DEPARTMENT

2014 SEWER RENEWALS
BY CIPP LINING
CONTRACT 11
INKSTER BLVD
1ST MH E OF PARR ST TO MH AT PARR ST

SHEET 10 OF 61
CITY DRAWING NUMBER
10752 REV 0