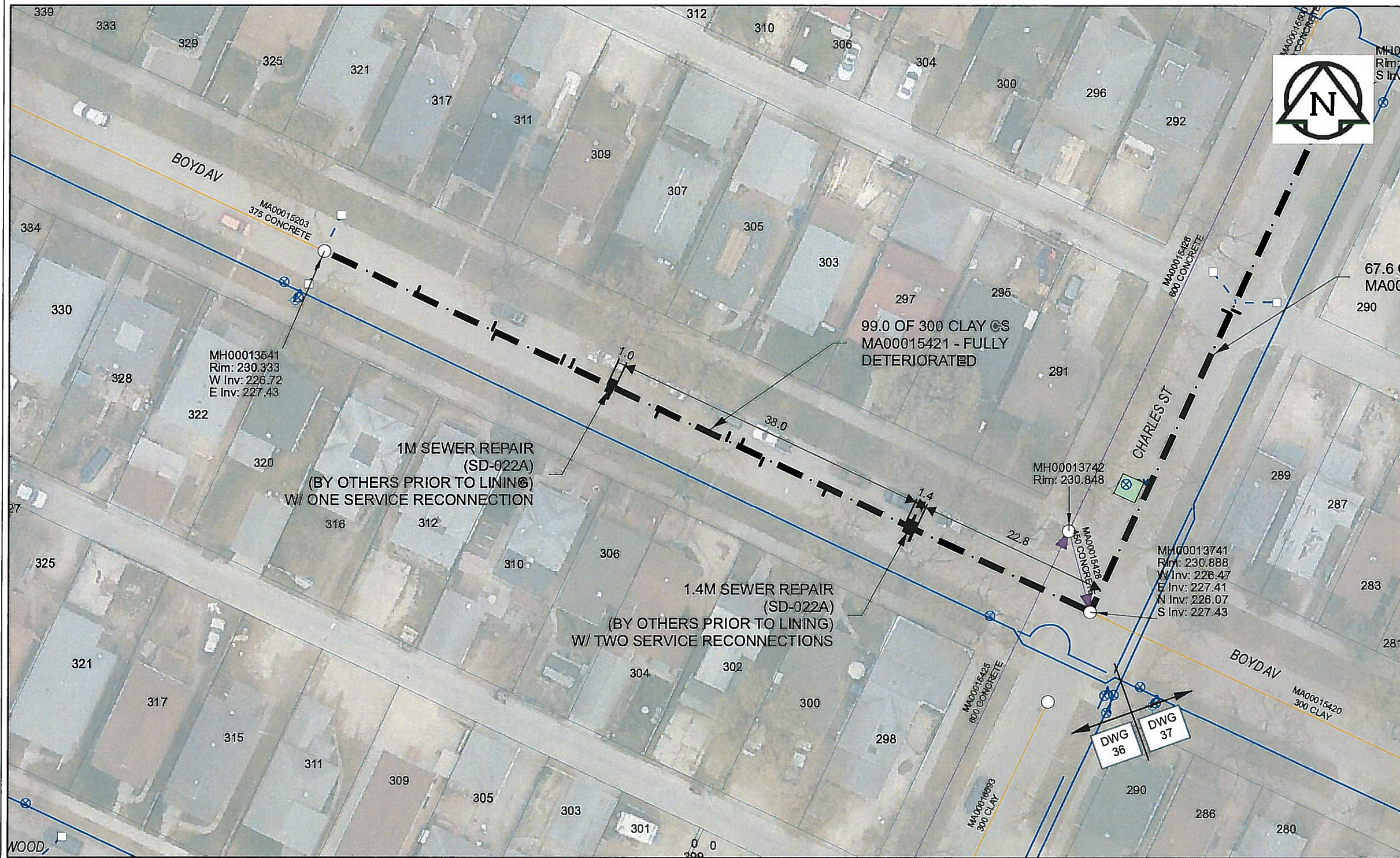


B SIZE 11" X 17" (279mm x 432mm)



Sewer Junction Information
(From Video Inspection)

Reference MH	Distance	Size	Clock
S-MH00013741	023.0	150	10
-	023.6	150	01
-	034.5	150	10
-	042.8	150	10
-	045.8	150	01
-	047.6	150	02
-	056.4	050	10
-	062.7	150	10
-	068.0	150	02
-	069.2	150	02
-	077.8	150	10
-	078.3	150	02
-	088.2	150	02

WARNING
IF POWER EQUIPMENT OR EXPLOSIVES ARE TO BE USED FOR EXCAVATION ON THIS PROJECT, THE CONTRACTOR MUST:
1) NOTIFY THE GAS COMPANY OF THE PROPOSED LOCATION OF EXCAVATION.
2) TAKE PRECAUTION TO AVOID DAMAGE TO GAS COMPANY INSTALLATIONS.
SEE PROVINCIAL REGULATION 140/92 FOR DETAILS

AECOM
Certificate of Authorization
AECOM Canada Ltd.
No. 4671 Date: 07 Jan 2015

METRIC
WHOLE NUMBERS INDICATE MILLIMETRES
DECIMALIZED NUMBERS INDICATE METRES
0 2.5 5 10 15 20 Meters

BID OPPORTUNITY NO. 557-2014

AECOM REVIEW DRFT CHK

LOCATION APPROVED UNDERGROUND STRUCTURES
SUPR. U/G STRUCTURES COMMITTEE DATE
NOTE:
LOCATION OF UNDERGROUND STRUCTURES AS SHOWN ARE BASED ON THE BEST INFORMATION AVAILABLE. BUT NO GUARANTEE IS GIVEN THAT ALL EXISTING UTILITIES ARE SHOWN OR THAT THE GIVEN LOCATIONS ARE EXACT. CONFIRMATION OF EXISTENCE AND EXACT LOCATION OF ALL SERVICES MUST BE OBTAINED FROM THE INDIVIDUAL UTILITIES BEFORE PROCEEDING WITH CONSTRUCTION.

Can-Net GPS Reference Station WINN/810

NO.	ISSUED FOR TENDER	YY/MM/DD	BY
0	ISSUED FOR TENDER	14/12/04	JD
NO.	REVISIONS	YY/MM/DD	BY

AECOM

DESIGNED BY	PL	CHECKED BY	<i>[Signature]</i>
DRAWN BY	JD	APPROVED BY	<i>[Signature]</i>
HOR. SCALE	1:500	RELEASED FOR CONSTRUCTION	<i>[Signature]</i>
VERT. SCALE	N/A	DATE	08/15

PROFESSIONAL'S SEAL
PROVINCE OF MANITOBA
K.W. FITCHETT
REGISTERED ENGINEER
CONSULTANT DRAWING NO. 60321545-01-C-2014 Lining-R0X.mxd

THE CITY OF WINNIPEG
WATER AND WASTE DEPARTMENT
2014 SEWER RENEWALS
BY CIPP LINING
CONTRACT 11
BOYD AV
MH AT CHARLES ST TO 1ST MH W OF CHARLES ST

SHEET 36 OF 61
CITY DRAWING NUMBER
10778 REV 0