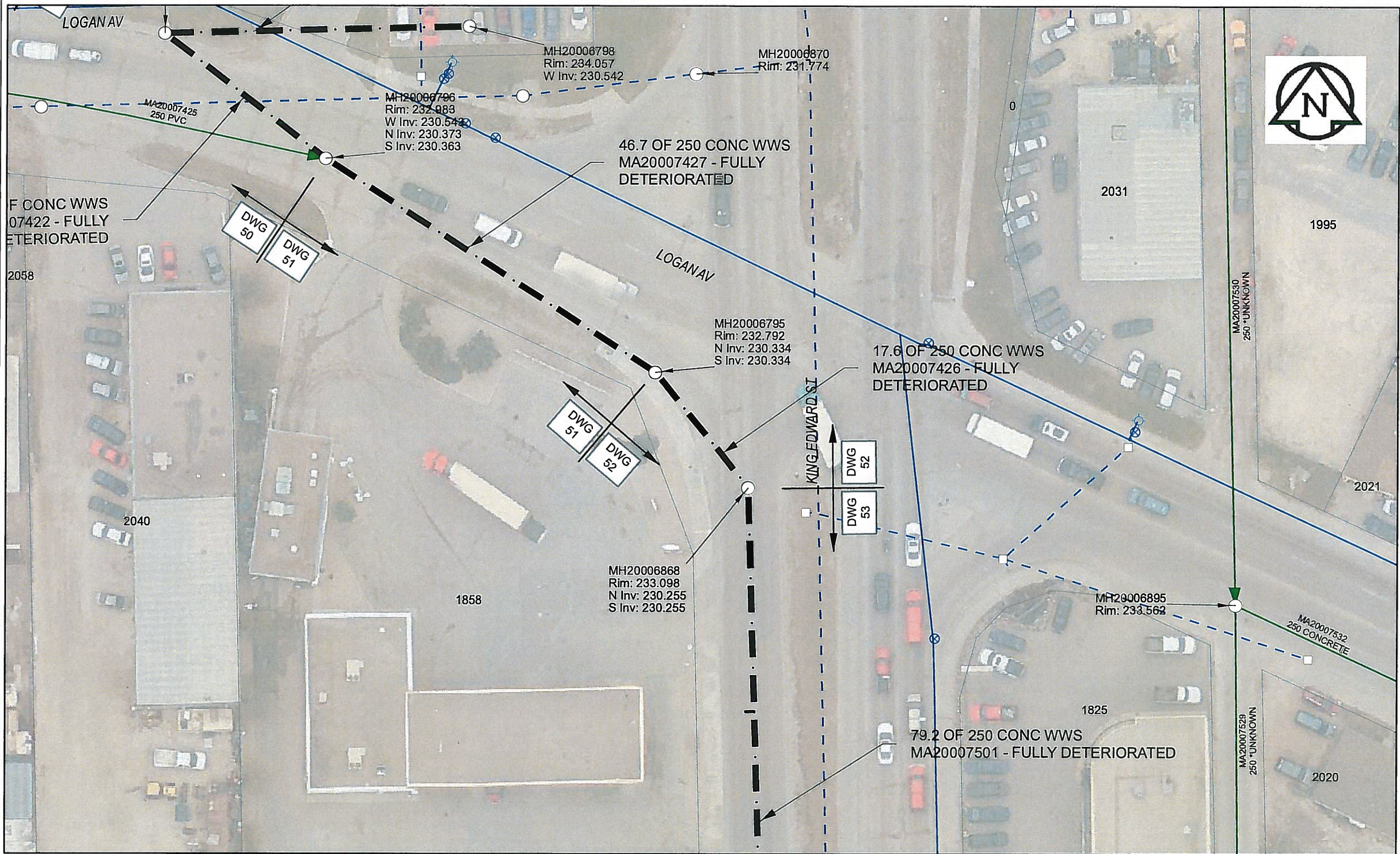


B SIZE 11" X 17" (279mm x 432mm)



Sewer Junction Information
(From Video Inspection)
Reference MH Distance Size Clock



WARNING
IF POWER EQUIPMENT OR EXPLOSIVES ARE TO BE USED FOR EXCAVATION ON THIS PROJECT, THE CONTRACTOR MUST:
1) NOTIFY THE GAS COMPANY OF THE PROPOSED LOCATION OF EXCAVATION.
2) TAKE PRECAUTION TO AVOID DAMAGE TO GAS COMPANY INSTALLATIONS.
SEE PROVINCIAL REGULATION 140/92 FOR DETAILS

AECOM
Certificate of Authorization
AECOM Canada Ltd.
No. 4671 Date: *07 Jan 2015*

METRIC
WHOLE NUMBERS INDICATE MILLIMETRES
DECIMALIZED NUMBERS INDICATE METRES
0 2.5 5 10 15 20
Meters

BID OPPORTUNITY NO. 557-2014

AECOM REVIEW DRFT CHK

FILE NAME: 2014 Lining.pdf SAVED BY: JD

LOCATION APPROVED UNDERGROUND STRUCTURES

SUPR. U/G STRUCTURES COMMITTEE DATE

NOTE:
LOCATION OF UNDERGROUND STRUCTURES AS SHOWN ARE BASED ON THE BEST INFORMATION AVAILABLE. BUT NO GUARANTEE IS GIVEN THAT ALL EXISTING UTILITIES ARE SHOWN OR THAT THE GIVEN LOCATIONS ARE EXACT. CONFIRMATION OF EXISTENCE AND EXACT LOCATION OF ALL INDIVIDUAL UTILITIES BEFORE PROCEEDING WITH CONSTRUCTION.

Can-Net GPS Reference Station WINN/810			
NO.	ISSUED FOR TENDER	YY/MM/DD	BY
0	ISSUED FOR TENDER	14/12/04	JD

AECOM

DESIGNED BY	PL	CHECKED BY	<i>[Signature]</i>
DRAWN BY	JD	APPROVED BY	<i>[Signature]</i>
HOR. SCALE	1:500	RELEASED FOR CONSTRUCTION	<i>[Signature]</i>
VERT. SCALE	N/A	DATE	<i>07 Jan 15</i>
DATE			

PROFESSIONAL'S SEAL

PROVINCE OF MANITOBA
K.W. FITCHETT
REGISTERED ENGINEER

CONSULTANT DRAWING NO.
60321545-01-C-2014 Lining-ROX.mxd

THE CITY OF WINNIPEG WATER AND WASTE DEPARTMENT

2014 SEWER RENEWALS
BY CIPP LINING
CONTRACT 11
KING EDWARD ST
MH AT LOGAN AV (SPL) TO 1ST MH S OF LOGAN AV

SHEET 52 OF 61
CITY DRAWING NUMBER
10794 REV 0