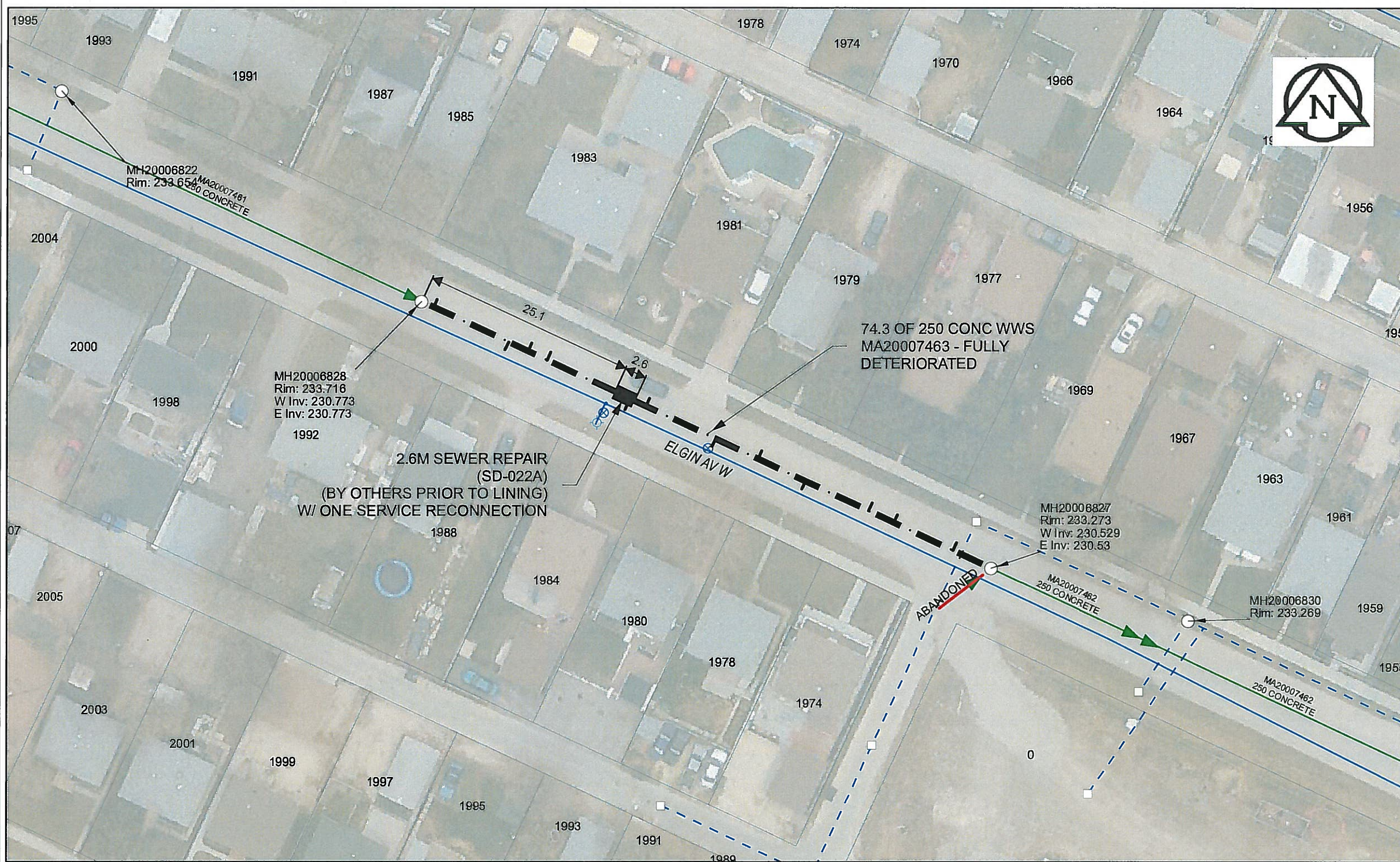


B SIZE 11" X 17" (279mm x 432mm)



Sewer Junction Information
(From Video Inspection)

Reference MH	Distance	Size	Clock
S-MH20006828	001.6	150	11
-	011.3	150	01
-	013.8	150	11
-	016.3	150	11

VIDEO REVERSAL

Reference MH	Distance	Size	Clock
S-MH20006827	005.0	150	02
-	012.7	150	01
-	016.0	150	01
-	024.2	150	10
-	030.4	150	01
-	036.0	150	10
-	045.1	150	01
-	047.2	150	11

74.3 OF 250 CONC WWS
MA20007463 - FULLY
DETERIORATED

MH20006828
Rim: 233.716
W Inv: 230.773
E Inv: 230.773

2.6M SEWER REPAIR
(SD-022A)
(BY OTHERS PRIOR TO LINING)
W/ ONE SERVICE RECONNECTION

MH20006827
Rim: 233.273
W Inv: 230.529
E Inv: 230.53

MH20006830
Rim: 233.269

WARNING
IF POWER EQUIPMENT OR EXPLOSIVES ARE TO BE USED FOR EXCAVATION ON THIS PROJECT, THE CONTRACTOR MUST:
1) NOTIFY THE GAS COMPANY OF THE PROPOSED LOCATION OF EXCAVATION.
2) TAKE PRECAUTION TO AVOID DAMAGE TO GAS COMPANY INSTALLATIONS.
SEE PROVINCIAL REGULATION 140/92 FOR DETAILS

APEGM
Certificate of Authorization
AECOM Canada Ltd.
No. 4671 Date: 07 Jan 2015

METRIC
WHOLE NUMBERS INDICATE MILLIMETRES
DECIMALIZED NUMBERS INDICATE METRES
0 2.5 5 10 15 20
Meters

BID OPPORTUNITY NO. 557-2014

AECOM REVIEW DRFT CHK

LOCATION APPROVED UNDERGROUND STRUCTURES

SUPR. W/G STRUCTURES COMMITTEE DATE

NOTE:
LOCATION OF UNDERGROUND STRUCTURES AS SHOWN ARE BASED ON THE BEST INFORMATION AVAILABLE. BUT NO GUARANTEE IS GIVEN THAT ALL EXISTING UTILITIES ARE SHOWN OR THAT THE GIVEN LOCATIONS ARE EXACT. CONFIRMATION OF EXISTENCE AND EXACT LOCATION OF ALL SERVICES MUST BE OBTAINED FROM THE INDIVIDUAL UTILITIES BEFORE PROCEEDING WITH CONSTRUCTION.

Can-Net GPS Reference Station WINN/810

NO.	REVISIONS	YY/MM/DD	BY
0	ISSUED FOR TENDER	14/12/04	JD

AECOM

DESIGNED BY	PL	CHECKED BY	<i>[Signature]</i>
DRAWN BY	JD	APPROVED BY	<i>[Signature]</i>
HOR. SCALE	1:500	RELEASED FOR CONSTRUCTION	<i>[Signature]</i>
VERT. SCALE	N/A	DATE	Jan 8/15

PROFESSIONAL'S SEAL
PROVINCE OF MANITOBA
K.W. FITCHETT
REGISTERED ENGINEER
CONSULTANT DRAWING NO. 80321545-01-C-2014 Lining_54-R0X.mxd

THE CITY OF WINNIPEG WATER AND WASTE DEPARTMENT

2014 SEWER RENEWALS
BY CIPP LINING
CONTRACT 11
ELGIN AV W
3RD MH E OF KING EDWARD ST TO 2ND MH E OF KING EDWARD ST

SHEET 54 OF 61
CITY DRAWING NUMBER
10796 REV 0