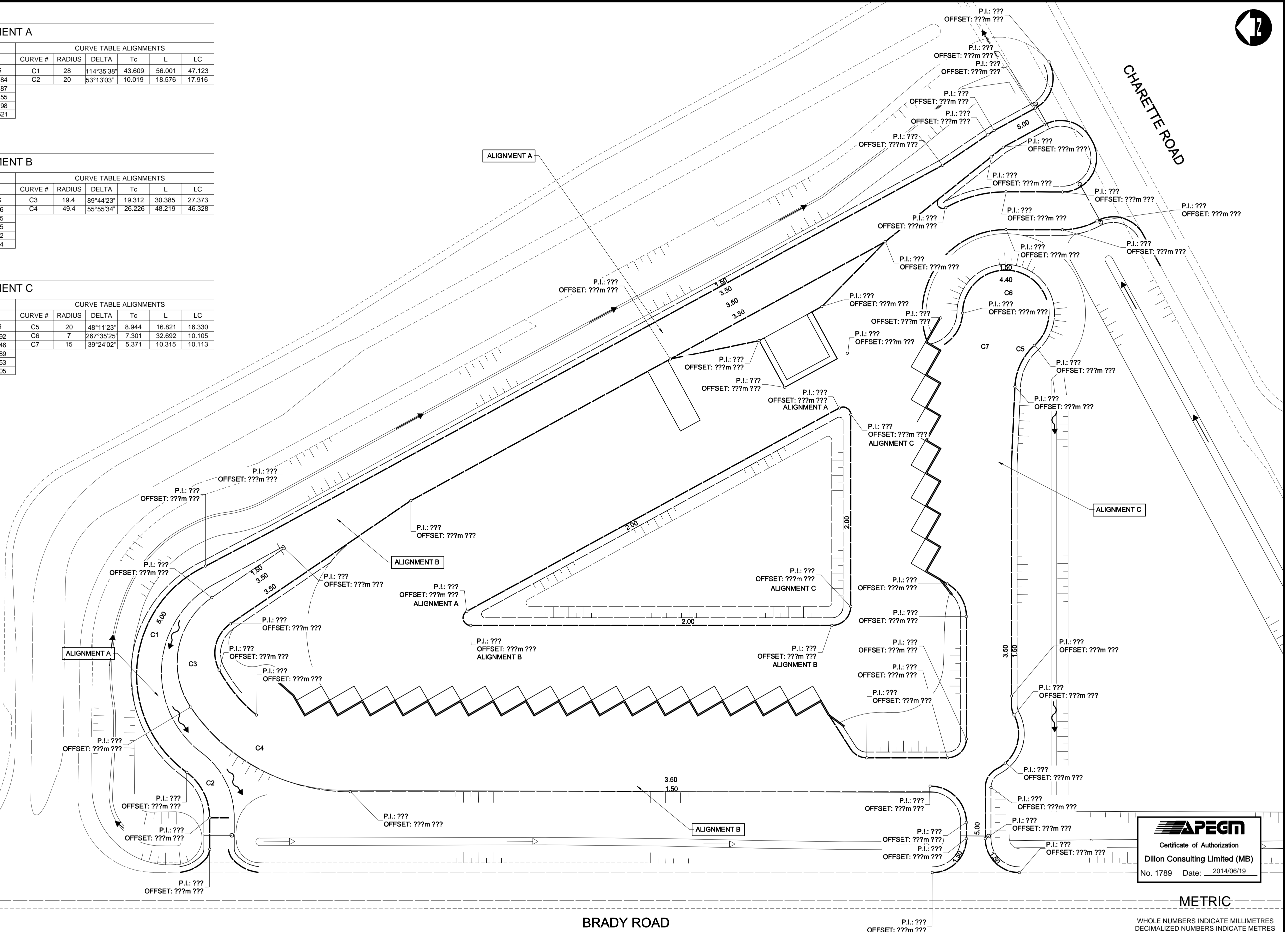


ALIGNMENT A				CURVE TABLE ALIGNMENTS					
CONTROL POINT	STATION	COORDINATES		CURVE #	RADIUS	DELTA	Tc	L	LC
		NORTHING	EASTING						
P.I.	1+000	628867.926	5512888.084	C1	28	114°35'38"	43.609	56.001	47.123
T.C.	1+267.069	628735.112	5513119.787	C2	20	53°13'03"	10.019	18.576	17.916
R.C.	1+323.070	628688.048	5513122.155						
C.T.	1+341.647	628672.201	5513113.798						
P.I.	1+350.085	628663.765	5513113.621						

ALIGNMENT B				CURVE TABLE ALIGNMENTS					
CONTROL POINT	STATION	COORDINATES		CURVE #	RADIUS	DELTA	Tc	L	LC
		NORTHING	EASTING						
P.I.	2+211.039	5513071.176	628762.976	C3	19.4	89°44'23"	19.312	30.385	27.373
C.T.	2+269.303	5513118.591	628729.115	C4	49.4	55°55'34"	26.226	48.219	46.328
R.C.	2+299.688	5513123.155	628702.125						
C.T.	2+347.907	5513081.791	628681.282						
P.I.	2+519.192	5512910.544	628684.844						

ALIGNMENT C				CURVE TABLE ALIGNMENTS					
CONTROL POINT	STATION	COORDINATES		CURVE #	RADIUS	DELTA	Tc	L	LC
		NORTHING	EASTING						
P.I.	0+100	5512909.867	628652.492	C5	20	48°11'23"	8.944	16.821	16.330
T.C.	0+237.284	5512912.738	628789.746	C6	7	267°35'25"	7.301	32.692	10.105
P.R.C.	0+254.106	5512906.384	628804.789	C7	15	39°24'02"	5.371	10.315	10.113
P.R.C.	0+286.798	5512916.474	628805.353						
P.I.	0+297.113	5512912.867	628795.905						



**APEGN**  
 Certificate of Authorization  
 Dillon Consulting Limited (MB)  
 No. 1789 Date: 2014/06/19

METRIC  
 WHOLE NUMBERS INDICATE MILLIMETRES  
 DECIMALIZED NUMBERS INDICATE METRES

150 WM	WATERMAIN	150 WM	MTS	M.T.S.	MTS	150 mm W.M.	WATERMAIN	150 mm W.M.
	HYDRANT			CONCRETE			HYDRANT	
	VALVE			ASPHALT			VALVE	
	LAND DRAINAGE SEWER			PLANNING			LAND DRAINAGE SEWER	
	WASTE WATER SEWER			SIDEWALK			WASTE WATER SEWER	
	MANHOLE			PAVING STONES			Q PROFILE	
	CATCH BASIN			PROPERTY LINE			NORTH/WEST GUTTER	
	TEST HOLES			SURVEY BAR			SOUTH/EAST GUTTER	
	JUNCTIONS			CURB RAMP			NORTH/WEST T/LANE	
	CULVERT			DITCH			SOUTH/EAST T/LANE	
	GAS			SWALE				
	EXISTING		EXISTING	LEGEND-PLAN	PROPOSED		LEGEND-PROFILE	PROPOSED

UNDERGROUND STRUCTURES  
 SUPV. U/G STRUCTURES COMMITTEE DATE  
 NOTE:  
 LOCATION OF UNDERGROUND STRUCTURES AS SHOWN ARE BASED ON THE BEST INFORMATION AVAILABLE BUT NO GUARANTEE IS GIVEN THAT ALL EXISTING UTILITIES ARE SHOWN OR THAT THE GIVEN LOCATIONS ARE EXACT. CONFIRMATION OF EXISTENCE AND EXACT LOCATION OF ALL SERVICES MUST BE OBTAINED FROM THE INDIVIDUAL UTILITIES BEFORE PROCEEDING WITH CONSTRUCTION.

B.M. ELEV.	DESIGNED BY	MRD
	DRAWN BY	PMW
	CHECKED BY	DBW
	APPROVED BY	ARR
	HOR. SCALE	1:500
	VERTICAL	
	CONSULTANT PROJECT NUMBER	13-8224
	DATE	MARCH 2014

**DILLON CONSULTING**

RELEASED FOR CONSTRUCTION

ENGINEER'S SEAL  
 PROVINCE OF MANITOBA  
 ORIGINAL STAMPED BY  
 M.R. DOUCET  
 Member  
 22306  
 REGISTERED PROFESSIONAL ENGINEER

**THE CITY OF WINNIPEG**  
 WATER AND WASTE DEPARTMENT

4R WINNIPEG DEPOT  
 BRADY ROAD RESOURCE  
 MANAGEMENT FACILITY

HORIZONTAL GEOMETRY

CITY DRAWING NUMBER  
 1-0400A-C0001-001

SHEET 2 OF 35

CONSULTANT DRAWING NUMBER  
 C1

G:\CAD\DWG\138224-02-Civil\01-Contract\Brady\138224-02-AL-COIN.dwg