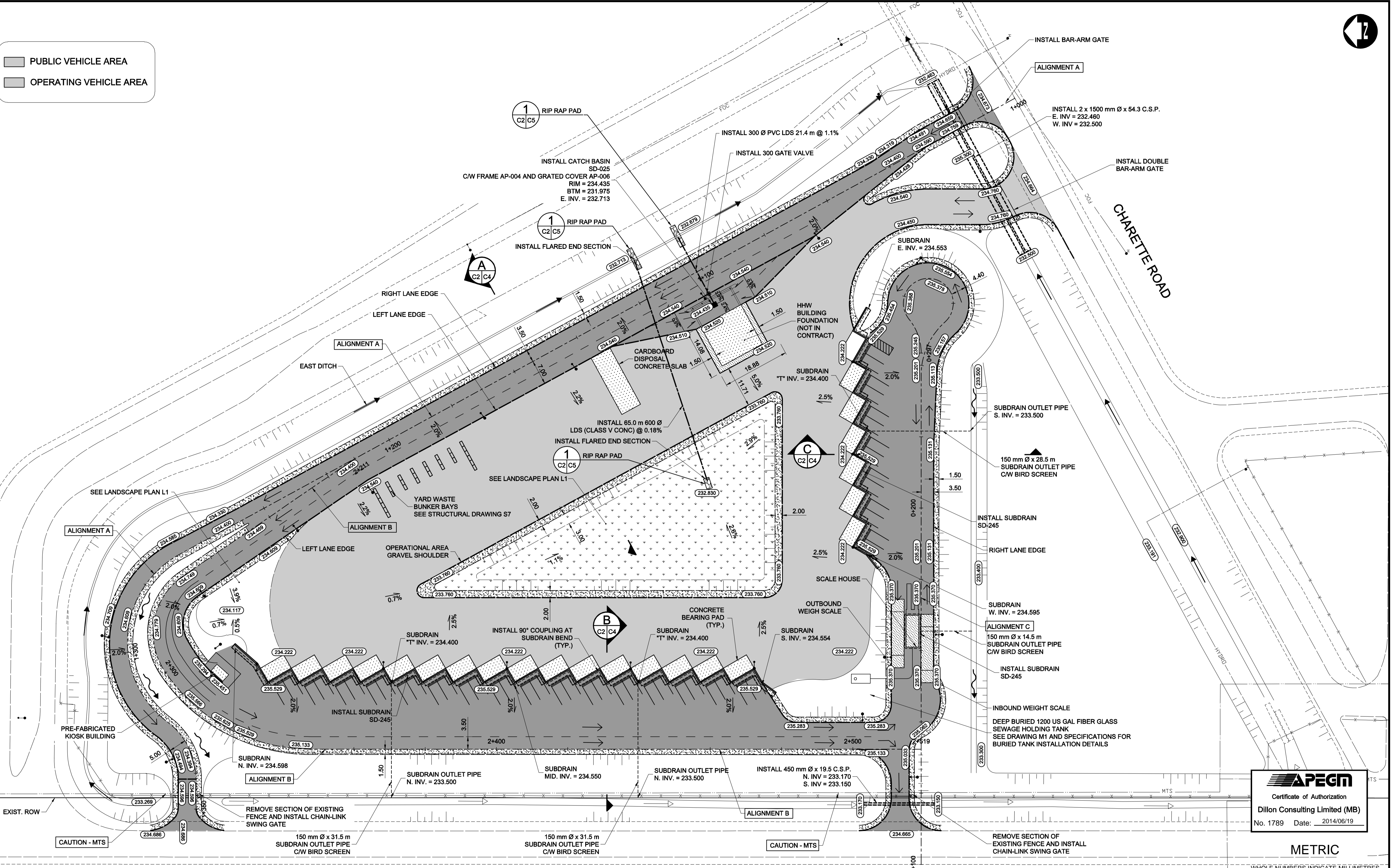


PUBLIC VEHICLE AREA  
 OPERATING VEHICLE AREA



**APEGN**  
 Certificate of Authorization  
 Dillon Consulting Limited (MB)  
 No. 1789 Date: 2014/06/19

**METRIC**

WHOLE NUMBERS INDICATE MILLIMETRES  
DECIMALIZED NUMBERS INDICATE METRES

**BRADY ROAD**

150 W.M.	WATERMAIN	150 W.M.	MTS	M.T.S.	MTS	150 mm W.M.	WATERMAIN	150 mm W.M.
	HYDRANT			CONCRETE			HYDRANT	
	VALVE			ASPHALT			VALVE	
	LAND DRAINAGE SEWER			PLANING			WASTE WATER SEWER	
	WASTE WATER SEWER			SIDEWALK			WASTE WATER SEWER	
	MANHOLE			PAVING STONES			Q PROFILE	
	CATCH BASIN			PROPERTY LINE			NORTH/WEST GUTTER	
	TEST HOLES			SURVEY BAR			SOUTH/EAST GUTTER	
	JUNCTIONS			CURB RAMP			NORTH/WEST T/LANE	
	CULVERT			DITCH			SOUTH/EAST T/LANE	
	GAS			SWALE				
	EXISTING		EXISTING	LEGEND-PLAN	PROPOSED			

**UNDERGROUND STRUCTURES**  
 SUPV. U/G STRUCTURES COMMITTEE DATE  
 NOTE:  
 LOCATION OF UNDERGROUND STRUCTURES AS SHOWN ARE BASED ON THE BEST INFORMATION AVAILABLE. BUT NO GUARANTEE IS GIVEN THAT ALL EXISTING UTILITIES ARE SHOWN OR THAT THE GIVEN LOCATIONS ARE EXACT. CONFIRMATION OF UTILITIES AND EXACT LOCATION OF ALL SERVICES MUST BE OBTAINED FROM THE INDIVIDUAL UTILITIES BEFORE PROCEEDING WITH CONSTRUCTION.

B.M. ELEV.	DESIGNED BY	MRD
	DRAWN BY	PMW
	CHECKED BY	DBW
	APPROVED BY	ARR
	HOR. SCALE	1:500
	VERTICAL	
	DATE	MARCH 2014

NO.	REVISIONS	DATE	BY
1	ISSUED FOR TENDER	14/06/19	ARR

DILLON CONSULTING

ENGINEER'S SEAL  
  
 M.R. DOUCET  
 2014/06/19  
 Member 22306  
 REGISTERED PROFESSIONAL ENGINEER

**THE CITY OF WINNIPEG**  
 WATER AND WASTE DEPARTMENT  
 4R WINNIPEG DEPOT  
 BRADY ROAD RESOURCE MANAGEMENT FACILITY  
 ROADWORKS PLAN  
 CITY DRAWING NUMBER 1-0400A-C0002-001  
 SHEET 3 OF 35  
 CONSULTANT PROJECT NUMBER 13-8224  
 CONSULTANT DRAWING NUMBER C2

G:\CAD\DWG\138224-02-Civil\01-Contract\Brady\138224-02-PLPR-COVID.dwg