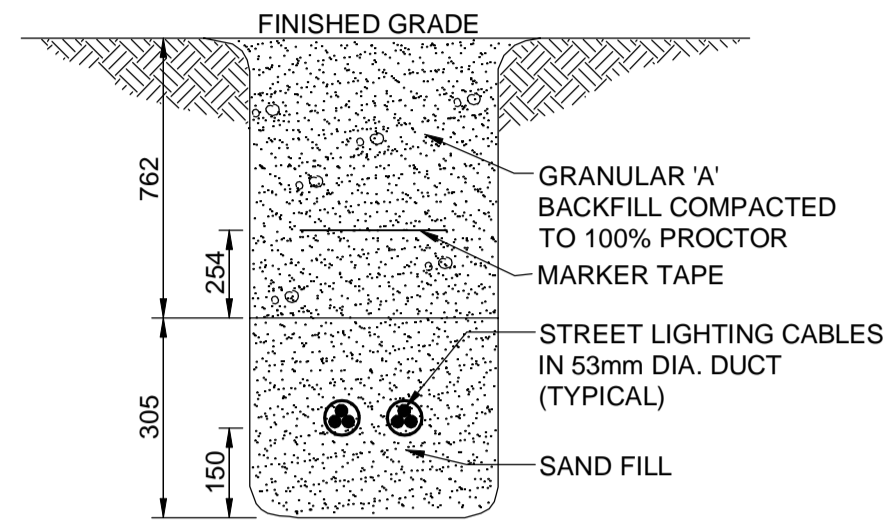


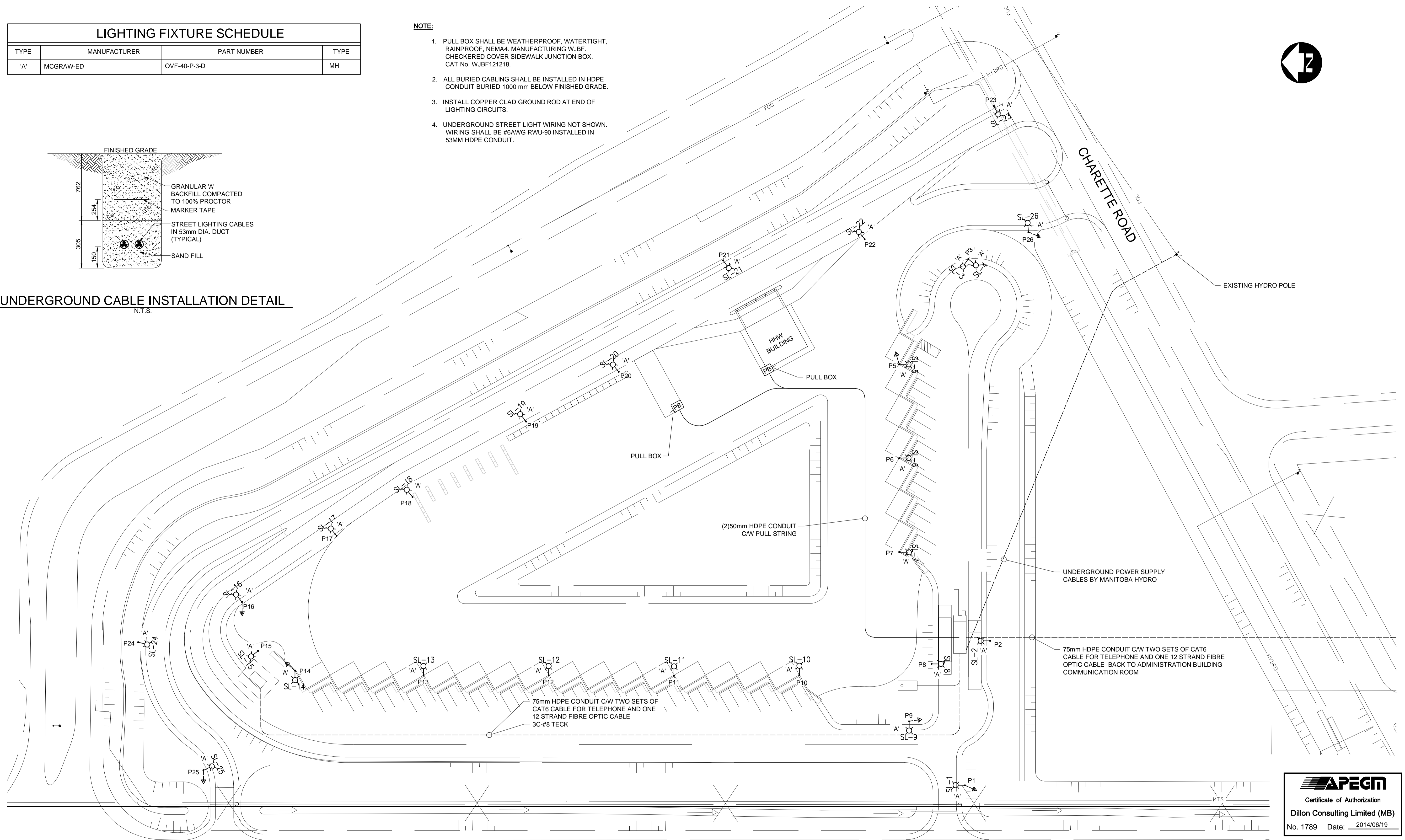
LIGHTING FIXTURE SCHEDULE			
TYPE	MANUFACTURER	PART NUMBER	TYPE
'A'	MCGRAW-ED	OVF-40-P-3-D	MH

NOTE:

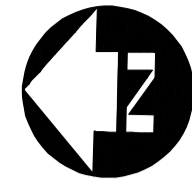
- PULL BOX SHALL BE WEATHERPROOF, WATERTIGHT, RAINPROOF, NEMA4, MANUFACTURING WJBF. CHECKERED COVER SIDEWALK JUNCTION BOX. CAT No. WJBF121218.
- ALL BURIED CABLING SHALL BE INSTALLED IN HDPE CONDUIT BURIED 1000 mm BELOW FINISHED GRADE.
- INSTALL COPPER CLAD GROUND ROD AT END OF LIGHTING CIRCUITS.
- UNDERGROUND STREET LIGHT WIRING NOT SHOWN. WIRING SHALL BE #6AWG RWU-90 INSTALLED IN 53MM HDPE CONDUIT.



UNDERGROUND CABLE INSTALLATION DETAIL



SITE PLAN - LIGHTING LAYOUT
1:500



APEGN
Certificate of Authorization
Dillon Consulting Limited (MB)
No. 1789 Date: 2014/06/19

METRIC
WHOLE NUMBERS INDICATE MILLIMETRES
DECIMALIZED NUMBERS INDICATE METRES

B.M. ELEV.	DESIGNED BY JAD				4R WINNIPEG DEPOT BRADY ROAD RESOURCE MANAGEMENT FACILITY	CITY DRAWING NUMBER 1-0400A-E0006-001
	DRAWN BY MS					SHEET 31 OF 35
	CHECKED BY BM					CONSULTANT DRAWING NUMBER E6
	APPROVED BY ARR					
	HOR. SCALE 1:500	RELEASED FOR CONSTRUCTION	ENGINEER'S SEAL	PROVINCE OF MANITOBA REGISTERED PROFESSIONAL ENGINEER B.L. MOORE 2014/06/19	CONSULTANT PROJECT NUMBER 13-8224	
1 ISSUED FOR TENDER 14/06/19 ARR	VERTICAL	DATE MARCH 2014				
NO. REVISIONS	DATE	BY	DATE			