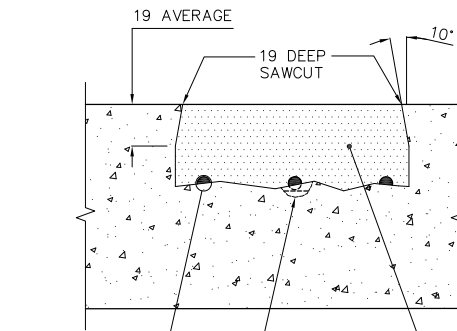
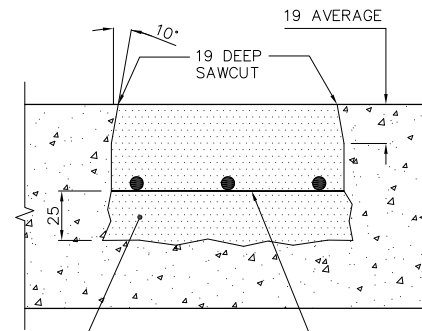


**TYPE 1 REPAIR
PARTIAL DEPTH
(40 - 74 MM DEEP TO
MID-HEIGHT OF TOP BARS)**



**TYPE 2 REPAIR
FULL DEPTH
(75 - 100 MM DEEP)**



EXISTING REINFORCING

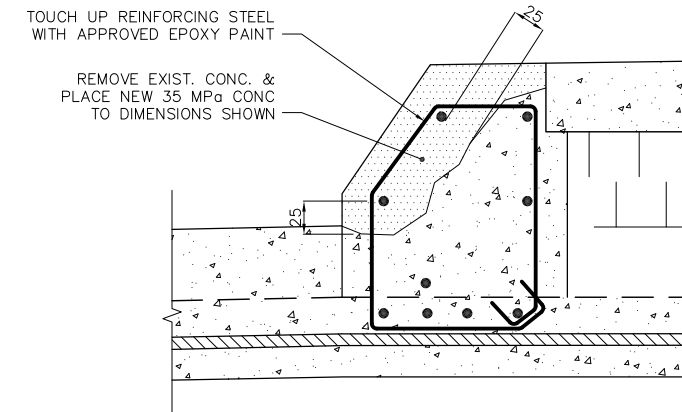
REMOVE EXIST. CONC. & PLACE NEW 35 MPa CONC TO DIMENSIONS SHOWN

EXISTING REINFORCING

EXPOSE BAR ONLY IN LOCATIONS WHERE ANODE WIRES WILL BE TIED & ONLY ENOUGH TO ENSURE PROPER CONNECTION WITH ANODE

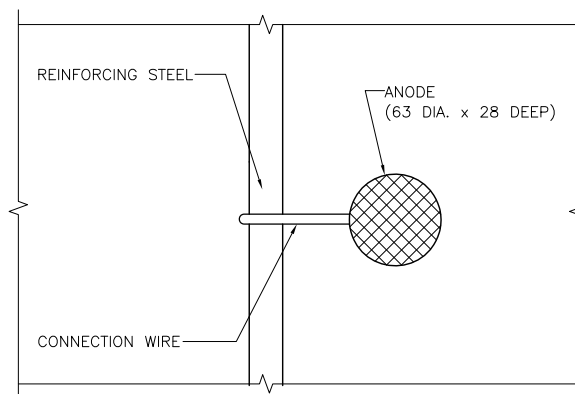
TYPICAL DECK REPAIR DETAILS

N.T.S.



**TYPICAL MEDIAN CURB REPAIR DETAILS
(NORTHBOUND SHOWN, SOUTHBOUND SIMILAR)**

N.T.S.



ANODE TO REBAR TYPICAL CONNECTION DETAIL

N.T.S.

NOTES:

- TYPICAL ANODE SPACING = 500 mm
- MINIMUM ANODE COVER = 25 mm

METRIC
WHOLE NUMBERS INDICATE MILLIMETRES
DECIMALIZED NUMBERS INDICATE METRES

NOTE:

B.M. ELEV.	DESIGNED BY:	D.M.
	DRAWN BY:	J.G.W.
	CHECKED BY:	B.A.N.
	APPROVED BY:	B.A.N.
	AUTHORIZED BY:	
0	ISSUED FOR TENDER	10/06/14 J.G.W.
NO.	REVISION	DATE BY

DESIGNED BY:	D.M.
DRAWN BY:	J.G.W.
CHECKED BY:	B.A.N.
APPROVED BY:	B.A.N.
AUTHORIZED BY:	

ENGINEER'S SEAL

BID OPPORTUNITY NO.: 565-2014

CITY OF WINNIPEG
PUBLIC WORKS DEPARTMENT
ENGINEERING DIVISION

PEMBINA HWY OVERPASS (ROUTE 165)
2014 BRIDGE DECK & MISCELLANEOUS
CONCRETE REPAIRS

MISCELLANEOUS DETAILS

SHEET 4 OF 4

HORIZONTAL: N.T.S.
VERTICAL: N.T.S.

CITY DRAWING NUMBER:
B215-14-04