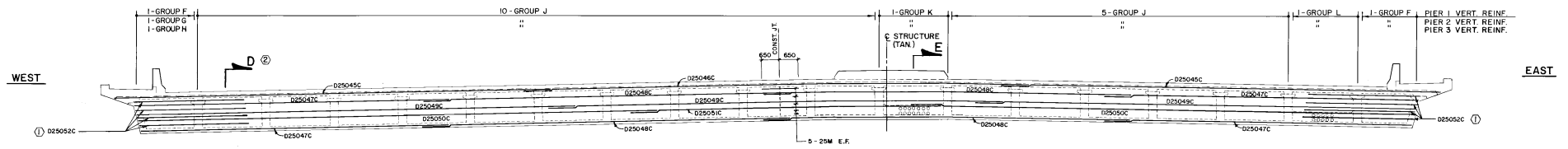
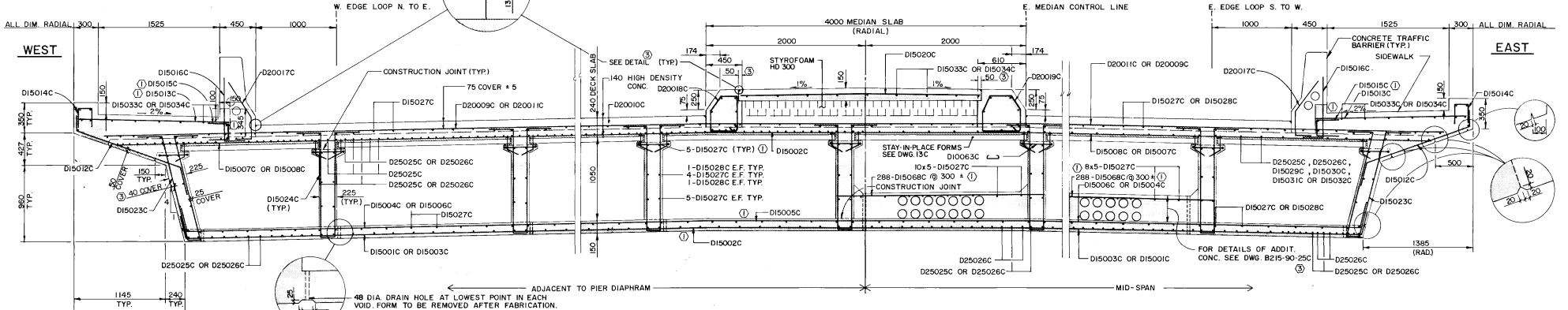


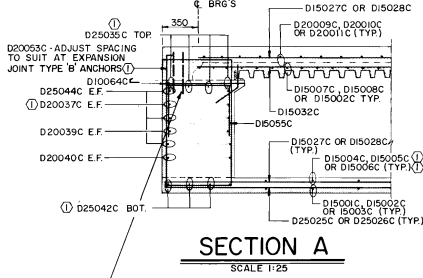
ELEVATION - ABUTMENT DIAPHRAGM
SCALE 1:75



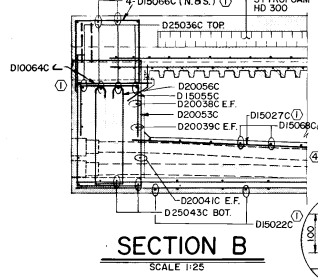
ELEVATION - PIER DIAPHRAGM
SCALE 1:75



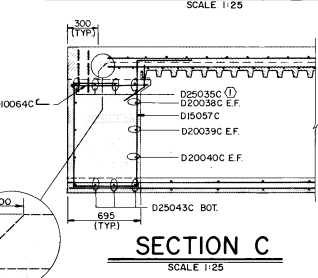
TYPICAL CROSS-SECTION
SCALE 1:25



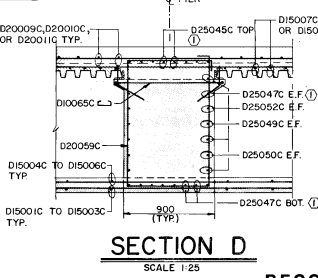
SECTION A
SCALE 1:25



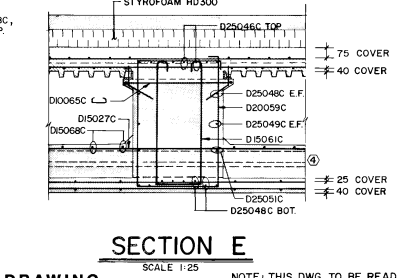
SECTION B
SCALE 1:25



SECTION C
SCALE 1:25



SECTION D
SCALE 1:25



SECTION E
SCALE 1:25

RECORD DRAWING

NOTE: THIS DWG. TO BE READ IN CONJUNCTION WITH DWG. NO. B215-90-11C & 13C

FOR ANCHOR BOLT DETAILS SEE DWG. B215-90-20C

LOCATION APPROVED UNDERGROUND STRUCTURES
 NA
 SUPV. USG STRUCTURES DATE
 COMMITTEE

NOTE:
 LOCATION OF UNDERGROUND STRUCTURES AS SHOWN ARE BASED ON THE BEST INFORMATION AVAILABLE BUT NO GUARANTEE IS GIVEN THAT ALL UTILITIES ARE SHOWN OR THAT THE OTHER LOCATIONS ARE EXACT. CONFIRMATION OF EXISTENCE AND EXACT LOCATION OF ALL SERVICES MUST BE OBTAINED FROM THE INDIVIDUAL UTILITIES BEFORE PROCEEDING WITH CONSTRUCTION.

METRIC

WHOLE NUMBERS INDICATE MILLIMETRES
DECIMALIZED NUMBERS INDICATE METRES

NO.	REVISIONS	DATE	BY
5	REVISED TO RECORD DWG.	DEC 9 1988	R.A.
4	ADDED CONDUITS TO SEC. B & E	NOV 10 1988	RN
3	NOTE REVISED / ADDED	NOV 10 1988	RN
2	SEC. LOCATION REVISED	NOV 10 1988	RN
1	REIN. STEEL REVISED	NOV 10 1988	RN

DESIGNED BY	J.J.	CHECKED BY	S.B.B.
DRAWN BY	RN	APPROVED BY	[Signature]
HOR SCALE	AS SHOWN	VERTICAL	AS SHOWN
DATE	NOVEMBER, 1988		

ENGINEER'S SEAL

 CONSULTANT DRAWING NO. 41-00-0265-240-01

THE CITY OF WINNIPEG
 WORKS AND OPERATIONS DIVISION
 STREETS AND TRANSPORTATION DEPARTMENT

BISHOP GRANDIN BLVD. EXTENSION
 WAVERLY STREET TO RED RIVER
 PEMBINA HIGHWAY OVERPASS
 CAST-IN-PLACE CONCRETE BOX ALTERNATIVE
 DECK DIMENSIONS & REINFORCING II

CITY DRAWING NUMBER
B215-90-12C

B-5827-12