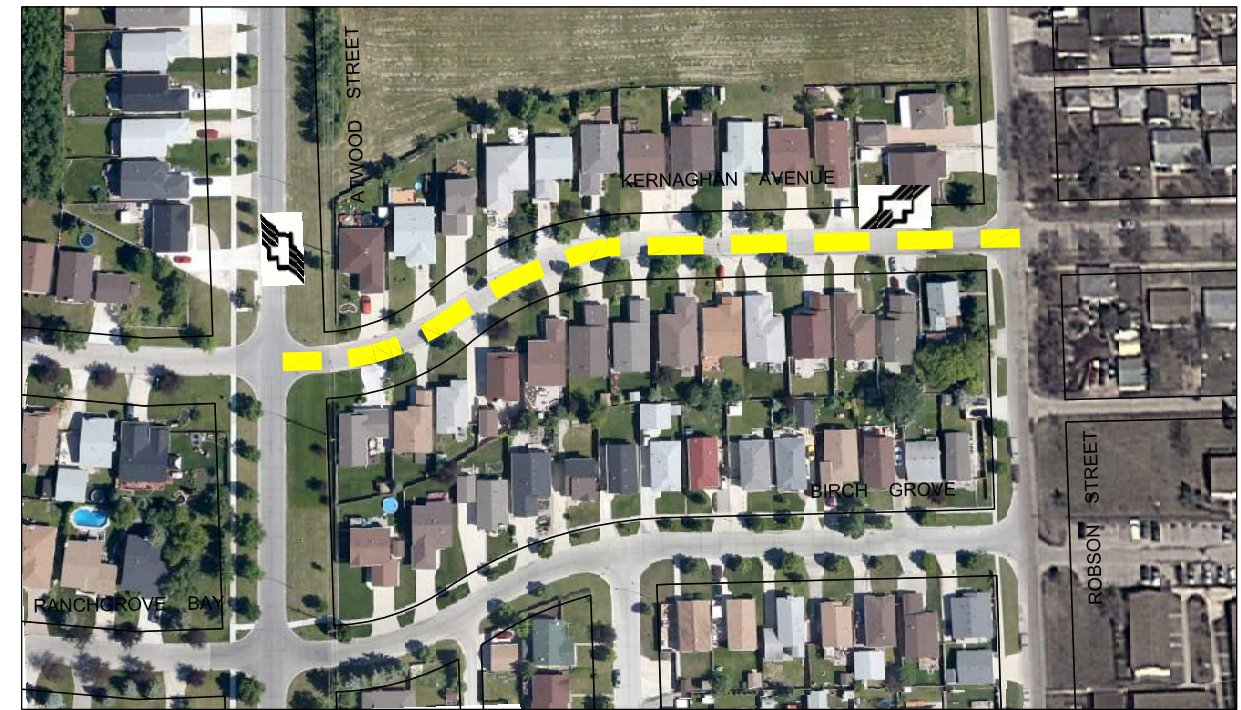


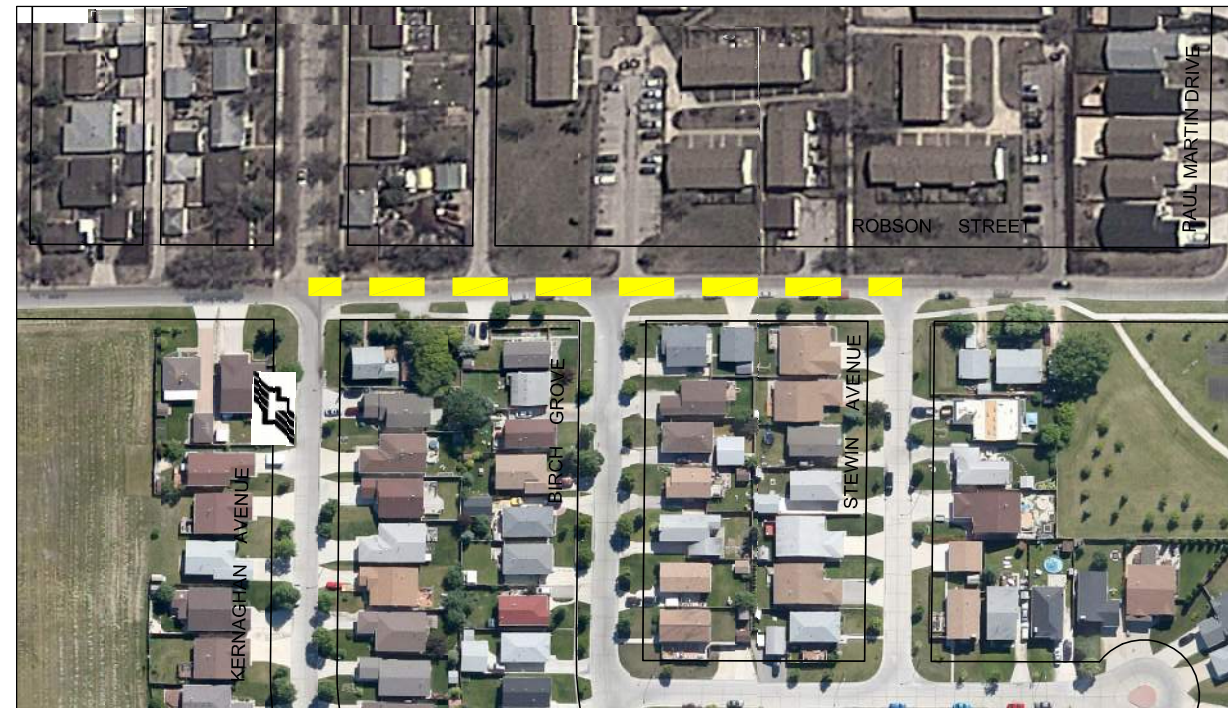
Jun 02, 2014 - 3:33pm
 P:\5514001-5514099\5514040 - 2014 TBO Consulting Services\MMM drawings\Contract-1\5514040-2014.01-Contract-1 Dwg-30.dwg - tab:04



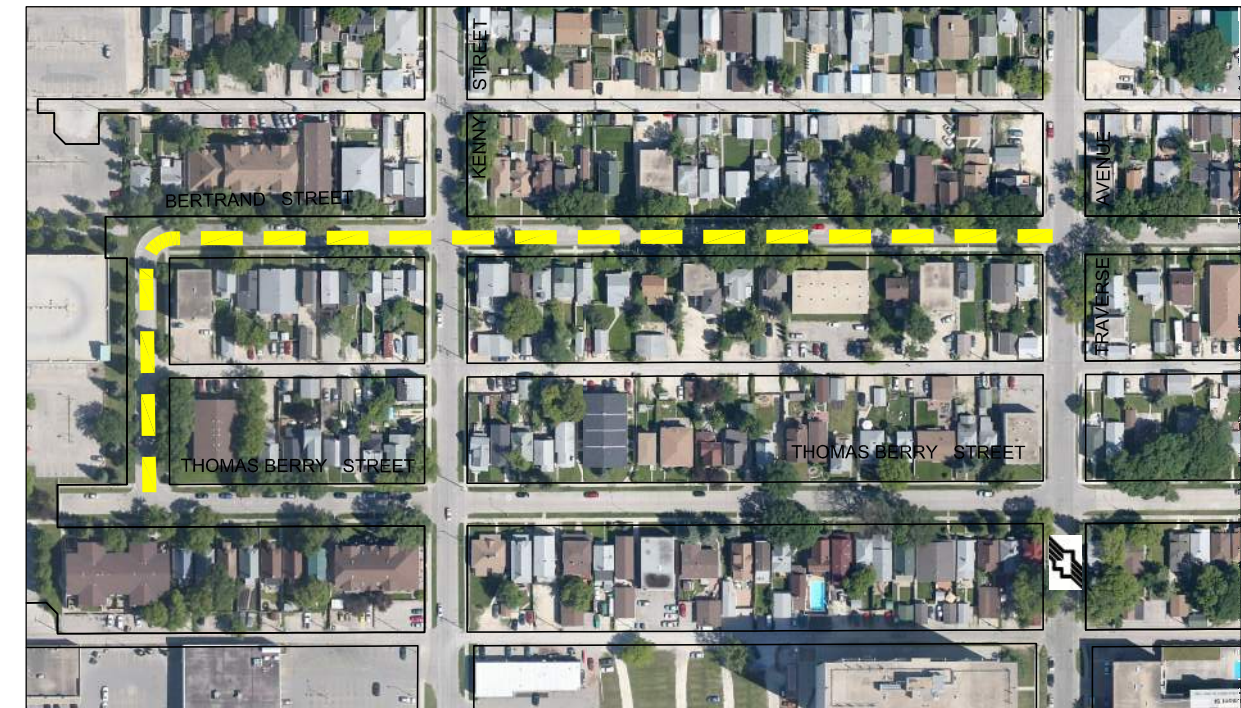
KISIL BAY - PREVETTE STREET TO KEENLEYSIDE STREET
SCALE 1:1500



KERNAGHAN AVENUE - ATWOOD STREET TO ROBSON STREET
SCALE 1:2000



ROBSON STREET - KERNAGHAN AVENUE TO STEWIN AVENUE
SCALE 1:2000



BERTRAND STREET - TRAVERSE AVENUE TO THOMAS BERRY STREET
SCALE NTS



METRIC
WHOLE NUMBERS INDICATE MILLIMETRES
DECIMALIZED NUMBERS INDICATE METRES

LEGEND

- LIMIT OF CONSTRUCTION
- BUS ROUTE
- SCHOOL LOCATION

LOCATIONS APPROVED
UNDERGROUND STRUCTURES

SIGNED BY: _____ DATE: _____
SUPPLY U/G STRUCTURES

LOCATION OF UNDERGROUND STRUCTURES AS SHOWN ARE BASED ON THE BEST INFORMATION AVAILABLE BUT NO GUARANTEE IS GIVEN THAT ALL EXISTING UTILITIES ARE SHOWN OR THAT THE GIVEN LOCATIONS ARE EXACT CONFIRMATION OF EXISTENCE AND EXACT LOCATION OF ALL SERVICES MUST BE OBTAINED FROM THE INDIVIDUAL UTILITIES BEFORE PROCEEDING

G.B.M. -	ELEV. -	DATE	BY
0	ISSUED FOR TENDER	14/05/09	VMM
NO.	REVISIONS	DATE	BY

MMM GROUP		MMM Group Limited Suite 111 - 93 Lombard Ave Winnipeg, MB R3B 3B1 T. 204.943.3178 F. 204.943.4948 www.mmmgrouplimited.com	
DESIGNED BY	VMM/BD	CHECKED BY	BD
DRAWN BY	SB	APPROVED BY	VMM
HOR. SCALE	NTS	RELEASED FOR CONSTRUCTION	-
VERTICAL	-	DATE	14/05/30

ENGINEER'S SEAL

 CONSULTANT ACAD DWG. NO.
 5514040-2014.1-04

THE CITY OF WINNIPEG
 PUBLIC WORKS DEPARTMENT
 ENGINEERING DIVISION
 2014 THIN BITUMINOUS OVERLAY (TBO) PROGRAM
 KISIL BAY, KERNAGHAN AVENUE, ROBSON STREET, BERTRAND STREET
 CITY DRAWING NO. SHEET 4 OF 7
 DRAWING NO. REV. 04 0

NOTE: These design documents are prepared solely for the use by the party with whom the design professional has entered into a contract and there are no representations of any kind made by the design professional to any party with whom the design professional has not entered into a contract.