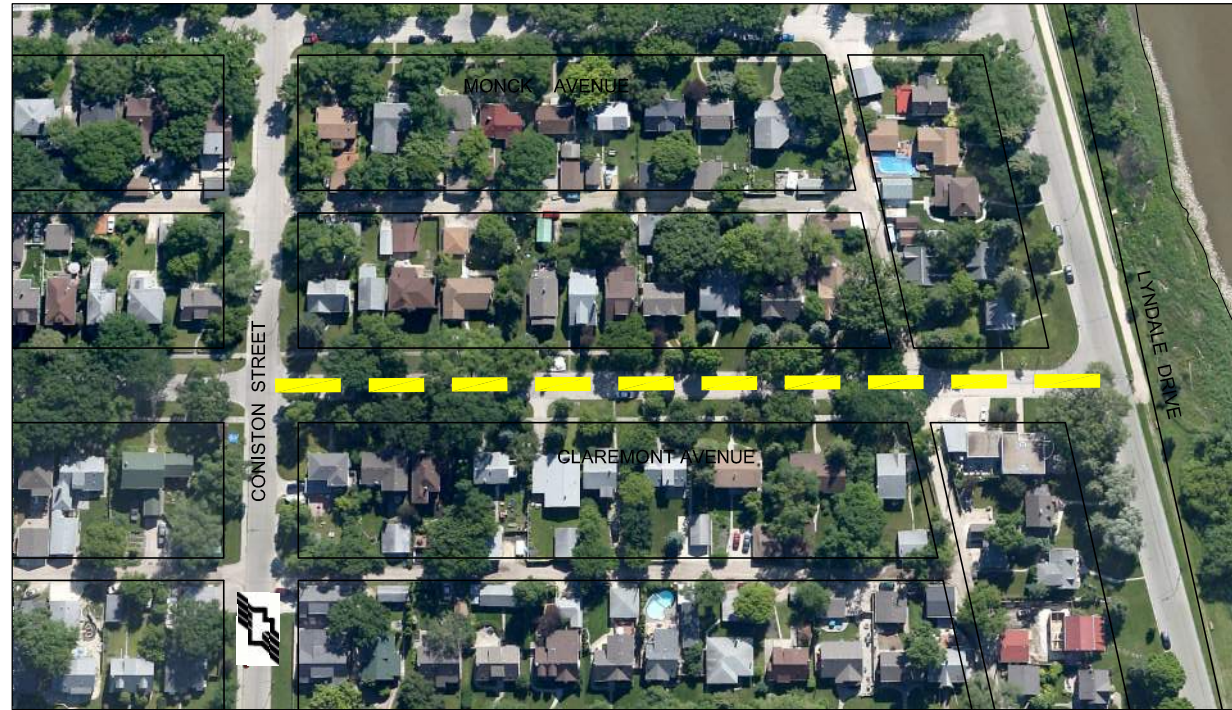


Jun 02, 2014 - 3:34pm
P:\5514001-5514099\5514040 - 2014 TBO Consulting Services\MMM drawings\Contract-1\5514040-2014.01-Contract-1 Dwg-30.dwg - tab:05



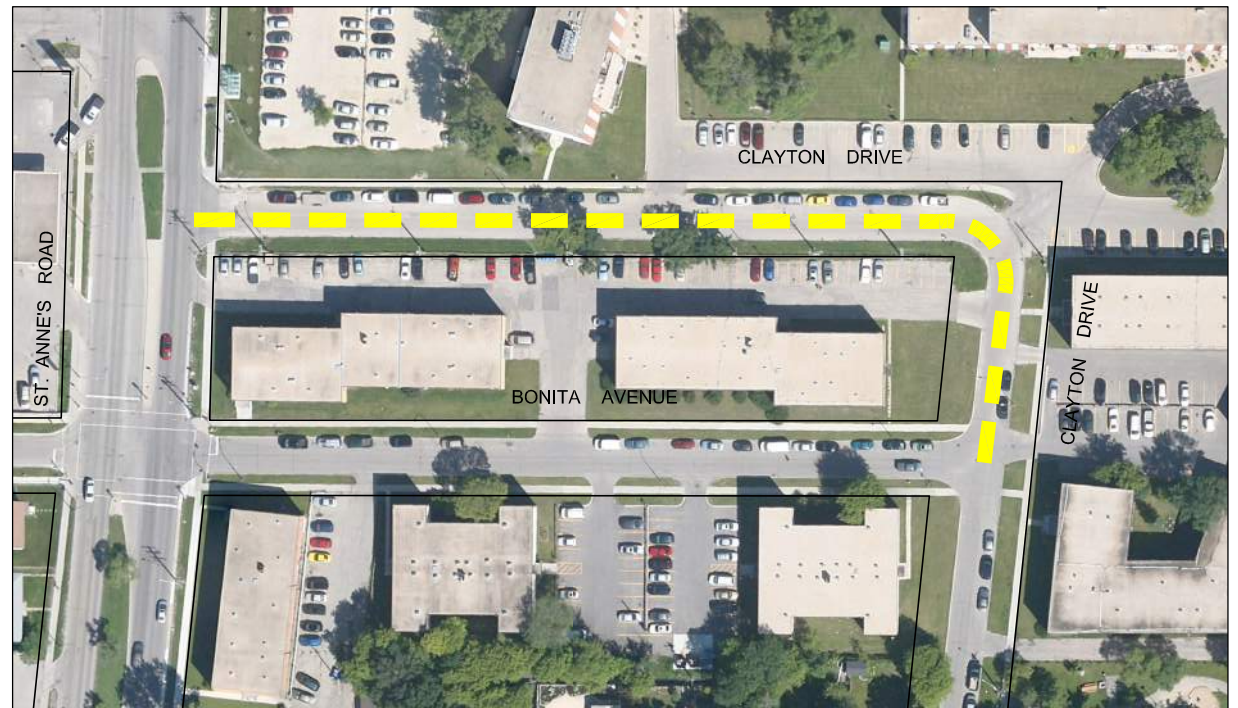
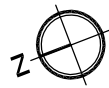
CLAREMONT AVENUE - LYNDALE DRIVE TO CONISTON STREET
SCALE 1:2000



MAGINOT STREET - DE BOURMONT AVENUE TO SPEERS ROAD
SCALE NTS



BEGHIN AVENUE - PAQUIN ROAD TO CAMIEL SYS STREET
SCALE NTS



CLAYTON DRIVE - ST. ANNES ROAD TO BONITA AVENUE
SCALE 1:1500



METRIC
WHOLE NUMBERS INDICATE MILLIMETRES
DECIMALIZED NUMBERS INDICATE METRES

LEGEND

- LIMIT OF CONSTRUCTION
- BUS ROUTE
- SCHOOL LOCATION

LOCATIONS APPROVED
UNDERGROUND STRUCTURES

SIGNED BY: _____
DATE: _____

SUPPLY U/G STRUCTURES _____
DATE: _____

LOCATION OF UNDERGROUND STRUCTURES AS SHOWN ARE BASED ON THE BEST INFORMATION AVAILABLE BUT NO GUARANTEE IS GIVEN THAT ALL EXISTING UTILITIES ARE SHOWN OR THAT THE GIVEN LOCATIONS ARE EXACT CONFIRMATION OF EXISTENCE AND EXACT LOCATION OF ALL SERVICES MUST BE OBTAINED FROM THE INDIVIDUAL UTILITIES BEFORE PROCEEDING

G.B.M. -	ELEV. -	NO.	REVISIONS	DATE	BY
0	ISSUED FOR TENDER	14/05/09	VMM		

MMM GROUP		<small>MMM Group Limited Suite 111 - 93 Lombard Ave. Winnipeg, MB R3B 3B1 t. 204.943.3178 f. 204.943.4948 www.mmmgrouplimited.com</small>	
DESIGNED BY	VMM/BD	CHECKED BY	BD
DRAWN BY	SB	APPROVED BY	VMM
HOR. SCALE NTS		RELEASED FOR CONSTRUCTION	
VERTICAL		DATE	14/05/30

ENGINEER'S SEAL

CONSULTANT ACAD DWG. NO.
5514040-2014.1-05

THE CITY OF WINNIPEG
PUBLIC WORKS DEPARTMENT
ENGINEERING DIVISION

2014 THIN BITUMINOUS OVERLAY (TBO) PROGRAM

CLAREMONT AVENUE, MAGINOT STREET,
BEGHIN AVENUE, CLAYTON DRIVE

CITY DRAWING NO.
SHEET 5 OF 7
DRAWING NO. REV.
05 0

NOTE: These design documents are prepared solely for the use by the party with whom the design professional has entered into a contract and there are no representations of any kind made by the design professional to any party with whom the design professional has not entered into a contract.