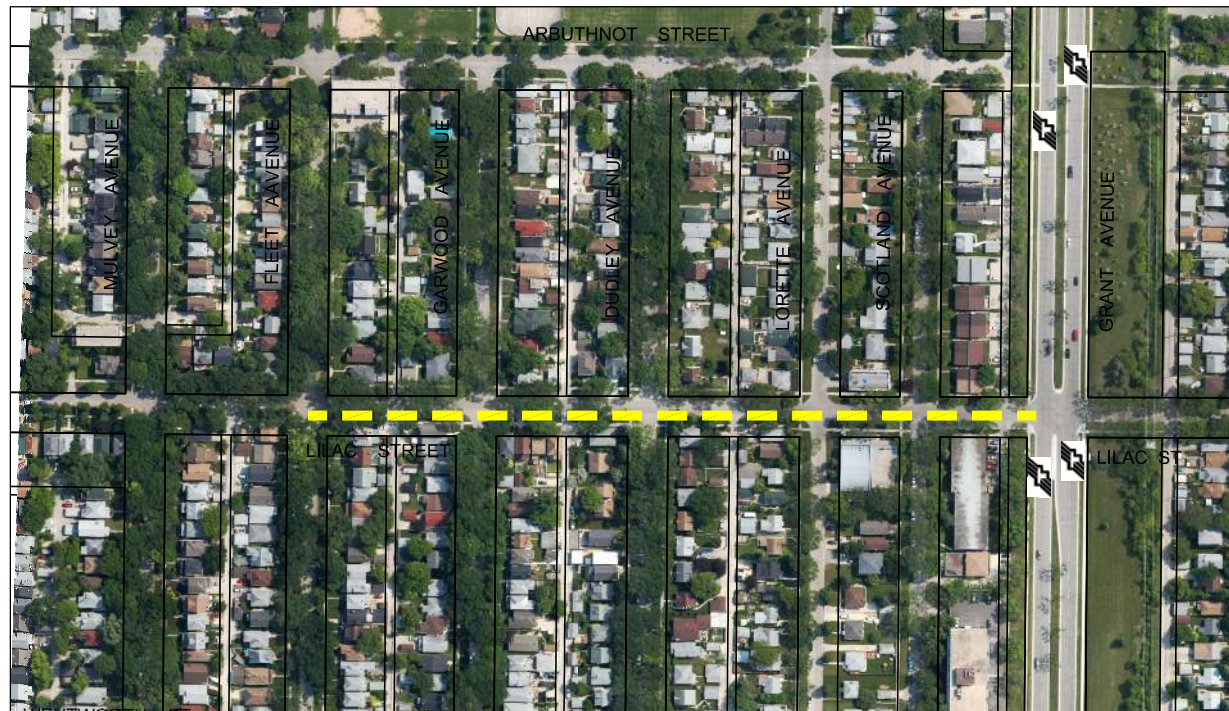
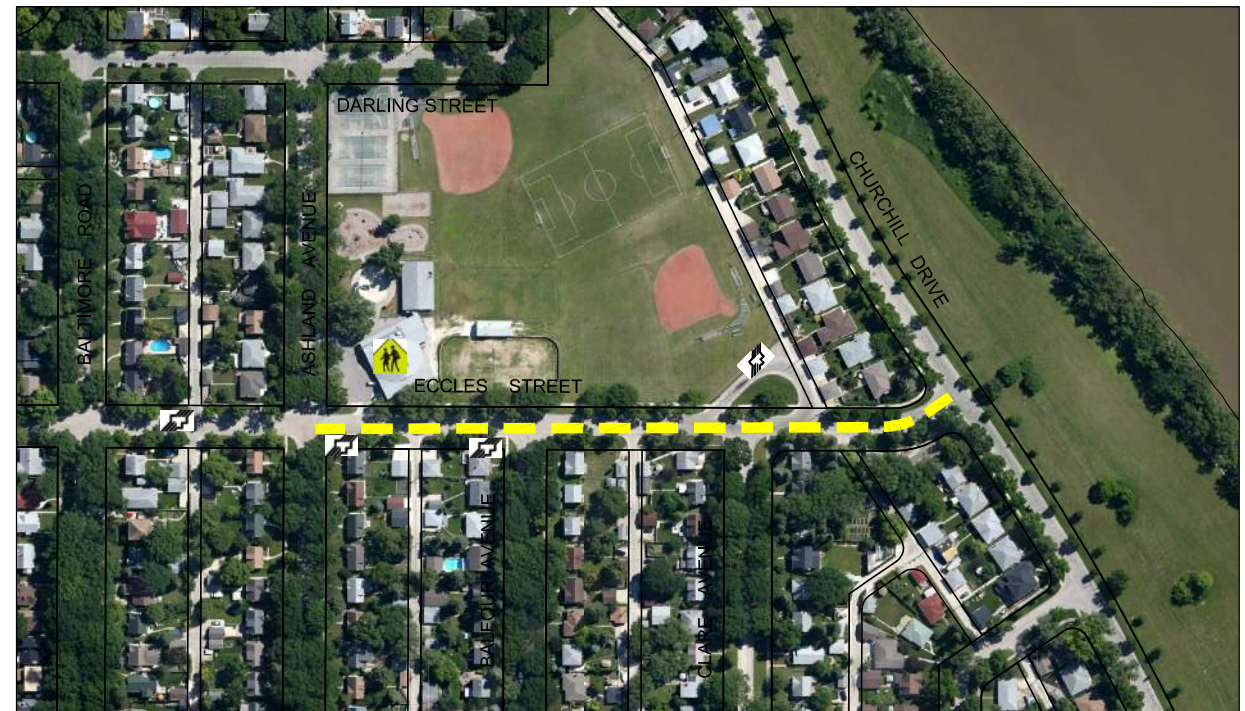


Jun 02, 2014 - 3:48pm
P:\5514001-5514099\5514040 - 2014 TBO Consulting Services\MMM drawings\Contract-2\5514040-2014.02-Contract-2 Dwg-May-30.dwg - tab:08



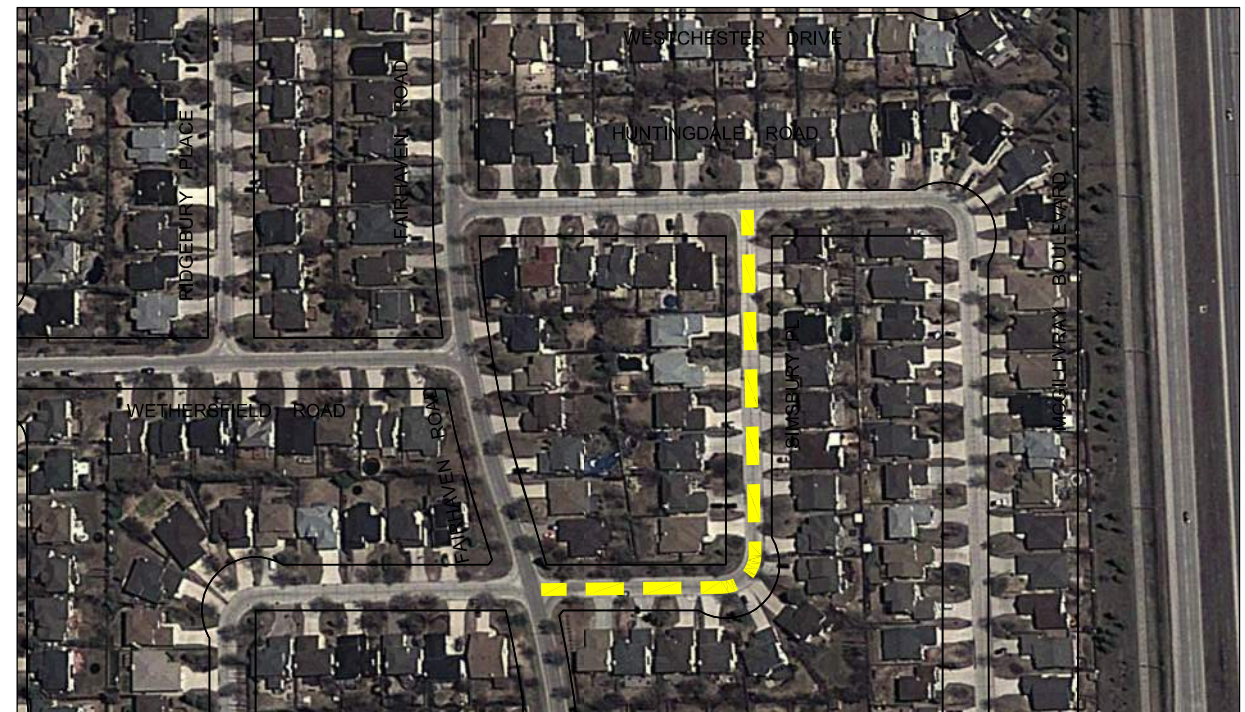
LILAC STREET - FLEET AVENUE TO GRANT AVENUE
SCALE NTS



ECCLES STREET - ASHLAND AVENUE TO CHURCHILL DRIVE
SCALE 1:3500



WOODINGTON BAY - LINDENWOOD DRIVE EAST TO LINDENWOOD DRIVE EAST
SCALE 1:3000



SIMSBURY PLACE - FAIRHAVEN ROAD TO NUNTINGDALE ROAD
SCALE NTS



METRIC
WHOLE NUMBERS INDICATE MILLIMETRES
DECIMALIZED NUMBERS INDICATE METRES

LEGEND

- LIMIT OF CONSTRUCTION
- BUS ROUTE
- SCHOOL LOCATION

LOCATIONS APPROVED
UNDERGROUND STRUCTURES

SUPPLY	U/G STRUCTURES	DATE

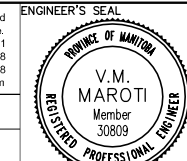
LOCATION OF UNDERGROUND STRUCTURES AS SHOWN ARE BASED ON THE BEST INFORMATION AVAILABLE BUT NO GUARANTEE IS GIVEN THAT ALL EXISTING UTILITIES ARE SHOWN OR THAT THE GIVEN LOCATIONS ARE EXACT CONFIRMATION OF EXISTENCE AND EXACT LOCATION OF ALL SERVICES MUST BE OBTAINED FROM THE INDIVIDUAL UTILITIES BEFORE PROCEEDING

G.B.M. -	ELEV. -	DATE	BY
0	ISSUED FOR TENDER	14/05/09	VMM
	NO. REVISIONS		



DESIGNED BY	VMM/BD	CHECKED BY	BD
DRAWN BY	SB	APPROVED BY	VMM
HOR. SCALE NTS		RELEASED FOR CONSTRUCTION	
VERTICAL	-		
DATE:	14/05/30	DATE	

MMM Group Limited
Suite 111 - 93 Lombard Ave
Winnipeg, MB R3B 3B1
t. 204.943.3178
f. 204.943.4948
www.mmmgrouplimited.com



CONSULTANT ACAD DWG. NO.
5514040-2014.2-08



2014 THIN BITUMINOUS OVERLAY (TBO) PROGRAM
LILAC STREET, ECCLES STREET,
WOODINGTON BAY, SIMSBURY PLACE

CITY DRAWING NO.
SHEET 1 OF 6
DRAWING NO. REV.
08 0