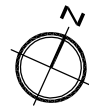


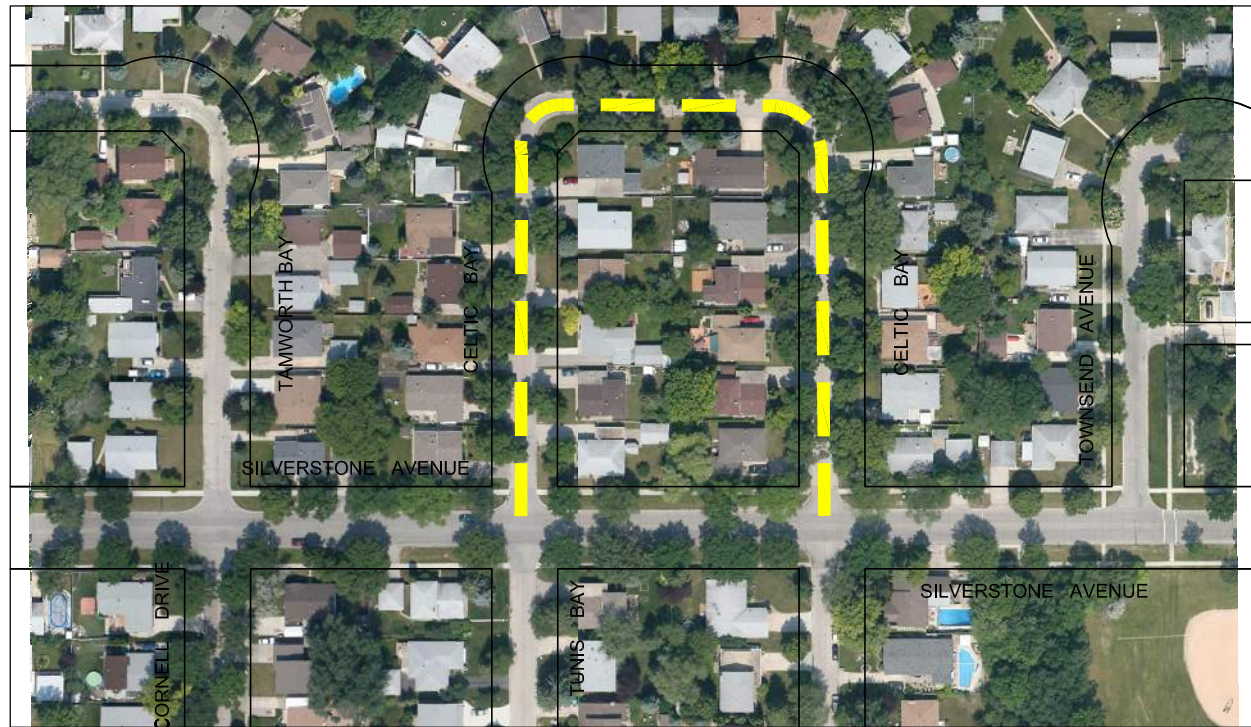
Jun 03, 2014 - 2:42pm
 P:\5514001-5514099\5514040 - 2014 TBO Consulting Services\MMM drawings\Contract-2\5514040-2014.02-Contract-2 Dwg-May-30.dwg - tab:11



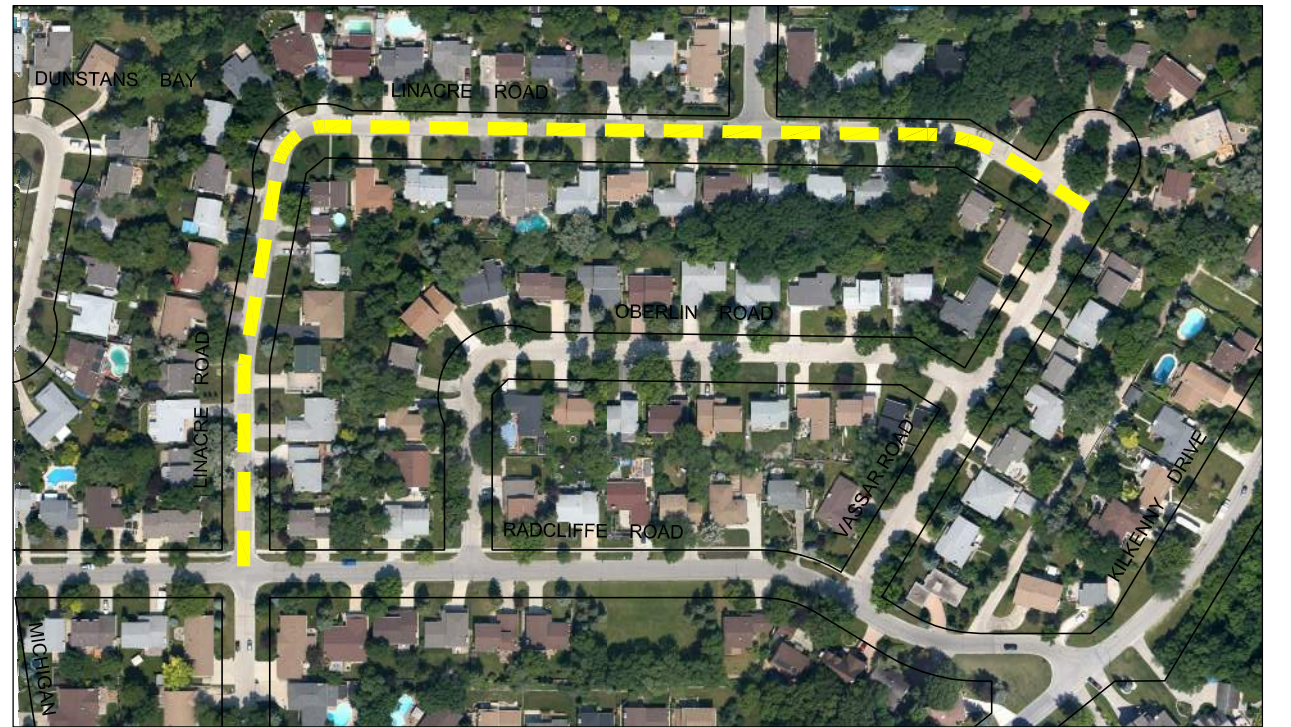
SPINDLESTONE GATE - SCURFIELD BOULEVARD TO SHEFFIELD ROAD
SCALE NTS



SAXON BAY - COLUMBIA DRIVE TO COLUMBIA DRIVE
SCALE 1:2500



CELTIC BAY - SILVERSTONE AVENUE TO SILVERSTONE AVENUE
SCALE NTS



OVERLIN ROAD - VASSAR ROAD TO RADCLIFFE ROAD
SCALE NTS



METRIC
WHOLE NUMBERS INDICATE MILLIMETRES
DECIMALIZED NUMBERS INDICATE METRES

LEGEND

- LIMIT OF CONSTRUCTION
- BUS ROUTE
- SCHOOL LOCATION

LOCATIONS APPROVED

UNDERGROUND STRUCTURES
SIGNED BY: _____

SUPV U/G STRUCTURES DATE _____

LOCATION OF UNDERGROUND STRUCTURES AS SHOWN ARE BASED ON THE BEST INFORMATION AVAILABLE BUT NO GUARANTEE IS GIVEN THAT ALL EXISTING UTILITIES ARE SHOWN OR THAT THE GIVEN LOCATIONS ARE EXACT CONFIRMATION OF EXISTENCE AND EXACT LOCATION OF ALL SERVICES MUST BE OBTAINED FROM THE INDIVIDUAL UTILITIES BEFORE PROCEEDING

G.B.M. -- ELEV. --

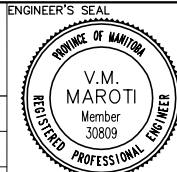
NO.	ISSUED FOR TENDER	DATE	BY	DATE	BY
0	ISSUED FOR TENDER	14/05/09	VMM		
NO.	REVISIONS	DATE	BY	DATE	BY



DESIGNED BY: VMM/BD
DRAWN BY: SB
HOR. SCALE NTS: VERTICAL
DATE: 14/05/30

MMM Group Limited
Suite 111 - 93 Lombard Ave.
Winnipeg, MB R3B 3B1
T. 204.943.3178
F. 204.943.4948
www.mmmgrouplimited.com

CHECKED BY: BD
APPROVED BY: VMM
RELEASED FOR CONSTRUCTION
DATE: -



CONSULTANT ACAD DWG. NO.
5514040-2014.2-11



2014 THIN BITUMINOUS OVERLAY (TBO) PROGRAM

SPINDLESTONE GATE, SAXON BAY, CELTIC BAY, OBERLIN ROAD

CITY DRAWING NO. SHEET 4 OF 6
DRAWING NO. REV. 11 0

NOTE: These design documents are prepared solely for the use by the party with whom the design professional has entered into a contract and there are no representations of any kind made by the design professional to any party with whom the design professional has not entered into a contract.