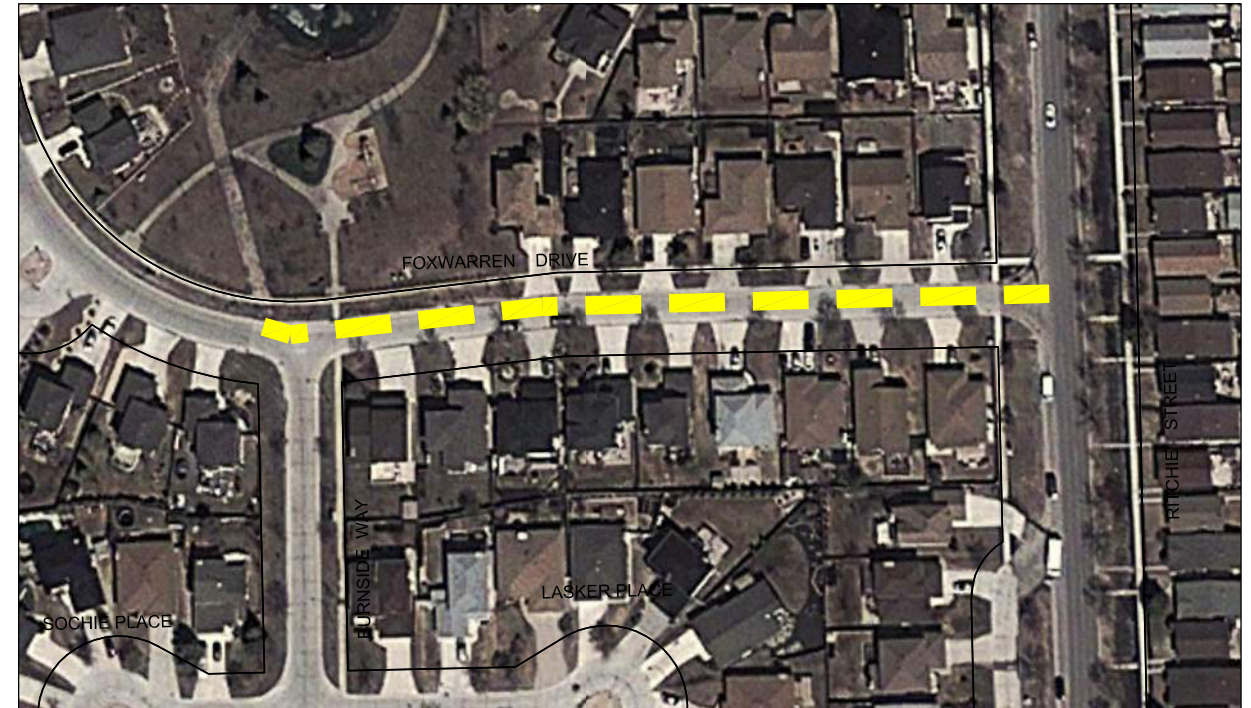
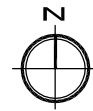


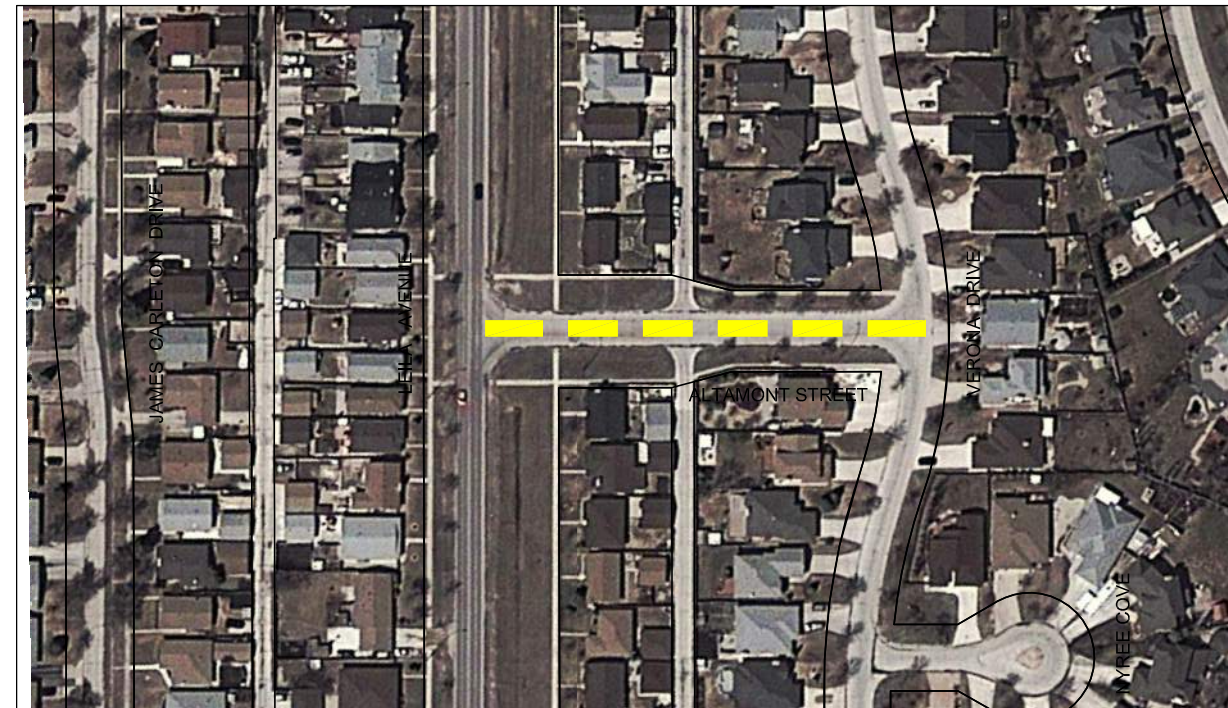
Jun 02, 2014 - 4:14pm
 P:\5514001-5514099\5514040 - 2014 TBO Consulting Services\MMM drawings\Contract-3\5514040-2014.03-Contract Dwg-3 - May-30.dwg - tab.14



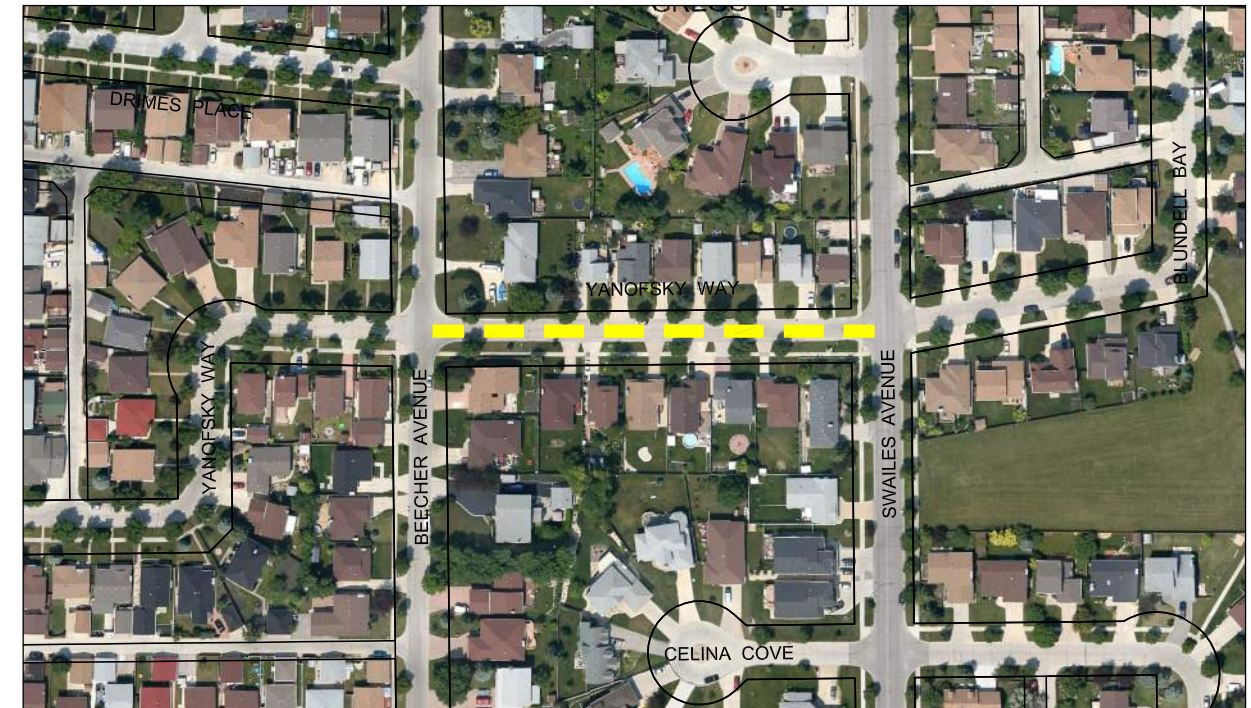
CHOCHINOV AVENUE - RITCHIE STREET TO DUNHAM STREET
 SCALE NTS



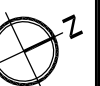
FOXWARREN DRIVE - BURNSIDE WAY TO RITCHIE STREET
 SCALE NTS



ALTAMONT STREET - LEILA AVENUE TO VERONA DRIVE
 SCALE 1:2000



YANOFSKY WAY - SWAILES AVENUE TO BEECHER AVENUE
 SCALE 1:2500



 MMM Group Limited No. 4531 Date: APRIL 30, 2014	METRIC WHOLE NUMBERS INDICATE MILLIMETRES DECIMALIZED NUMBERS INDICATE METRES	LEGEND LIMIT OF CONSTRUCTION BUS ROUTE SCHOOL LOCATION	LOCATIONS APPROVED UNDERGROUND STRUCTURES SIGNED BY: _____ DATE: _____ SUPPLY U/G STRUCTURES DATE: _____	<table border="1"> <thead> <tr> <th>NO.</th> <th>ISSUED FOR TENDER</th> <th>DATE</th> <th>BY</th> </tr> </thead> <tbody> <tr> <td>0</td> <td>ISSUED FOR TENDER</td> <td>14/05/09</td> <td>VMM</td> </tr> <tr> <td>NO.</td> <td>REVISIONS</td> <td>DATE</td> <td>BY</td> </tr> </tbody> </table>	NO.	ISSUED FOR TENDER	DATE	BY	0	ISSUED FOR TENDER	14/05/09	VMM	NO.	REVISIONS	DATE	BY	 DESIGNED BY: VMM/BD DRAWN BY: SB HOR. SCALE NTS: VERTICAL DATE: 14/05/30	G.B.M. - ELEV. - CHECKED BY: BD APPROVED BY: VMM RELEASED FOR CONSTRUCTION: - DATE: -	ENGINEER'S SEAL CONSULTANT ACAD DWG. NO. 5514040-2014.3-14	 THE CITY OF WINNIPEG PUBLIC WORKS DEPARTMENT ENGINEERING DIVISION 2014 THIN BITUMINOUS OVERLAY (TBO) PROGRAM CHOCHINOV AVENUE, FOXWARREN DRIVE, ALTAMONT STREET, YANOFSKY WAY CITY DRAWING NO. SHEET 1 OF 7 DRAWING NO. REV. 14 0
NO.	ISSUED FOR TENDER	DATE	BY																	
0	ISSUED FOR TENDER	14/05/09	VMM																	
NO.	REVISIONS	DATE	BY																	

NOTE: These design documents are prepared solely for the use by the party with whom the design professional has entered into a contract and there are no representations of any kind made by the design professional to any party with whom the design professional has not entered into a contract.