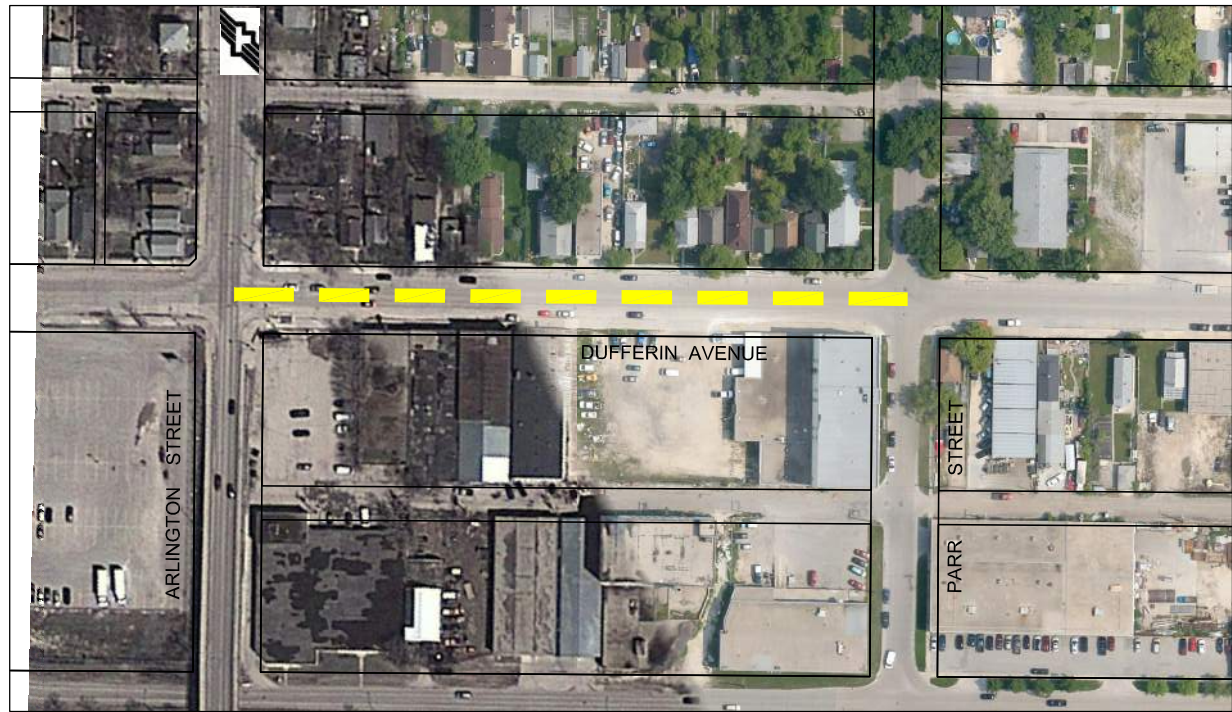




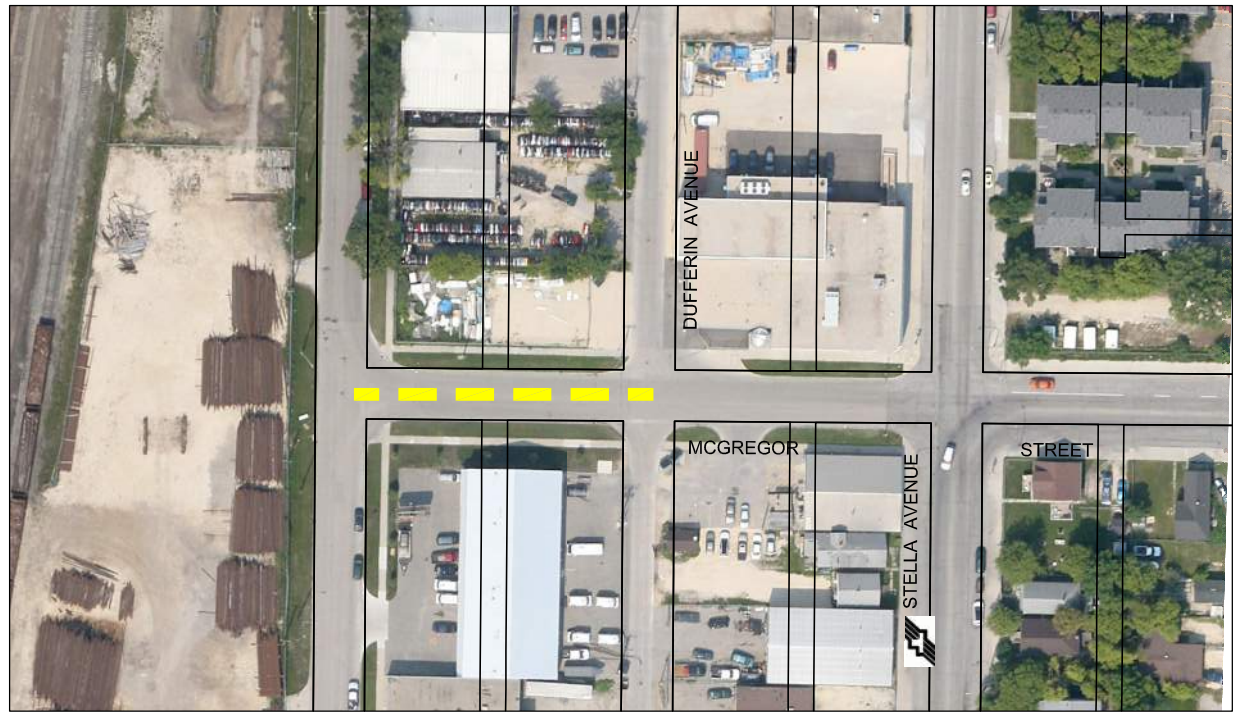
**MANLEY AVENUE - KING EDWARD STREET TO BENTLEY STREET**  
SCALE NTS



**HECKLA AVENUE - PARK LANE TO KEEWATIN STREET**  
SCALE NTS



**DUFFERIN AVENUE - ARLINGTON STREET TO PARR STREET**  
SCALE NTS



**McGREGOR STREET - DUFFERIN AVENUE TO JARVIS AVENUE**  
SCALE NTS



**METRIC**  
WHOLE NUMBERS INDICATE MILLIMETRES  
DECIMALIZED NUMBERS INDICATE METRES

**LEGEND**

- LIMIT OF CONSTRUCTION
- BUS ROUTE
- SCHOOL LOCATION

**LOCATIONS APPROVED**  
UNDERGROUND STRUCTURES

SIGNED BY: \_\_\_\_\_ DATE: \_\_\_\_\_  
SUPPLY U/G STRUCTURES

LOCATION OF UNDERGROUND STRUCTURES AS SHOWN ARE BASED ON THE BEST INFORMATION AVAILABLE BUT NO GUARANTEE IS GIVEN THAT ALL EXISTING UTILITIES ARE SHOWN OR THAT THE GIVEN LOCATIONS ARE EXACT CONFIRMATION OF EXISTENCE AND EXACT LOCATION OF ALL SERVICES MUST BE OBTAINED FROM THE INDIVIDUAL UTILITIES BEFORE PROCEEDING

G.B.M. -	ELEV. -	DATE	BY
0	ISSUED FOR TENDER	14/05/09	VMM
NO.	REVISIONS	DATE	BY

		MMM Group Limited Suite 111 - 93 Lombard Ave Winnipeg, MB R3B 3B1 T. 204.943.3178 F. 204.943.4948 www.mmmgrouplimited.com	
DESIGNED BY	VMM/BD	CHECKED BY	BD
DRAWN BY	SB	APPROVED BY	VMM
HOR. SCALE NTS	VERTICAL	RELEASED FOR CONSTRUCTION	
DATE:	14/05/30	DATE	

ENGINEER'S SEAL  
  
 CONSULTANT ACAD DWG. NO.  
 5514040-2014.3-16

**THE CITY OF WINNIPEG**  
 PUBLIC WORKS DEPARTMENT  
 ENGINEERING DIVISION

**2014 THIN BITUMINOUS OVERLAY (TBO) PROGRAM**

MANLEY AVENUE, HECKLA AVENUE,  
 DUFFERIN AVENUE, McGREGOR STREET

CITY DRAWING NO.  
 SHEET 3 OF 6  
 DRAWING NO. REV.  
 16 0

NOTE: These design documents are prepared solely for the use by the party with whom the design professional has entered into a contract and there are no representations of any kind made by the design professional to any party with whom the design professional has not entered into a contract.