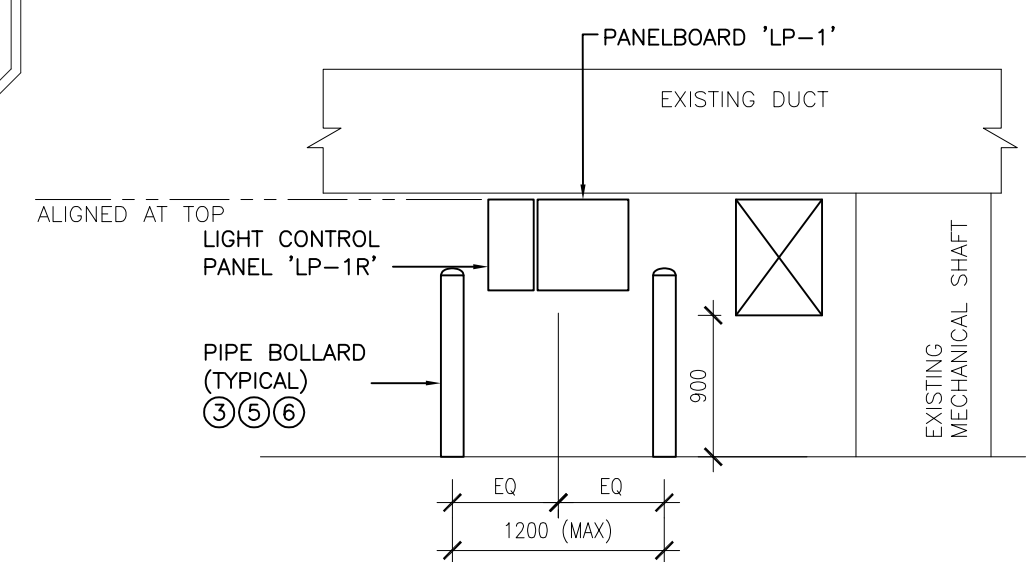


1 PARKADE PLAN - ELECTRICAL
 E2.0 SCALE: 1:200



2 EQUIPMENT LAYOUT ELEVATION
 E2.0 SCALE: NTS

GENERAL NOTES

A. COORDINATE EXACT LOCATIONS OF ALL INSTALLATION WITH MILLENNIUM LIBRARY AND ALL TRADES ON SITE PRIOR TO ROUGH IN.

KEY NOTES

1. INSTALL ROKTEC SEAL IN EXTERIOR WALL PENETRATION TO SEAL AROUND CABLES AND CONDUIT. SCAN WALL PRIOR TO CORING. DO NOT CUT REBARS.
2. INSTALL CONDUIT ON CEILING. PROVIDE LIQUID TIGHT COUPLINGS.
3. PIPE BOLLARD BOLTED TO CONCRETE FLOOR.
4. PROVIDE LIGHT CONTROL PANEL. LIGHT CONTROL PANEL TO BE DOUGLAS LITEPAK-B (WPAK-3338) WITH CONTROLLER AND REMOTE PHOTO SENSOR.
5. BOLLARDS SPACE CENTERED TO BOTH PANELS.
6. PROVIDE 1METRE CLEARANCE IN FRONT OF PANELS AND TRANSFORMER.

6.			
5.			
4.			
3.			
2.			
1.			
0.	ISSUED FOR TENDER	RB	06/16/14
NO.	Revisions	BY	DD/MM/YY

APEGM
 Certificate of Authorization
SMS Engineering Ltd.
 No. 166 Expiry: April 30, 2015

PROVINCE OF MANITOBA
S. BLAZEWSKI
 June 11, 2014
 Member # 24015
 REGISTERED PROFESSIONAL ENGINEER

SMS ENGINEERING
 SMS Engineering Ltd. Consulting Engineers
 770 Bradford Street Winnipeg MB Canada R3H 0N3
 Telephone: 204-775-0291 Fax: 204-772-2153
 sms@smseng.com

Project Title
MILLENNIUM LIBRARY PARK REDEVELOPMENT PHASE 2

WINNIPEG MANITOBA

Drawing Title
PARKADE PLAN - ELECTRICAL

Drawn By RB	Checked By RB	Approved By SB
Scale AS SHOWN	Date JUNE 10, 2014	Project No. 14-158-01
Revision Number 0	Drawing Number E2.0	Sheet Order 3 OF 3