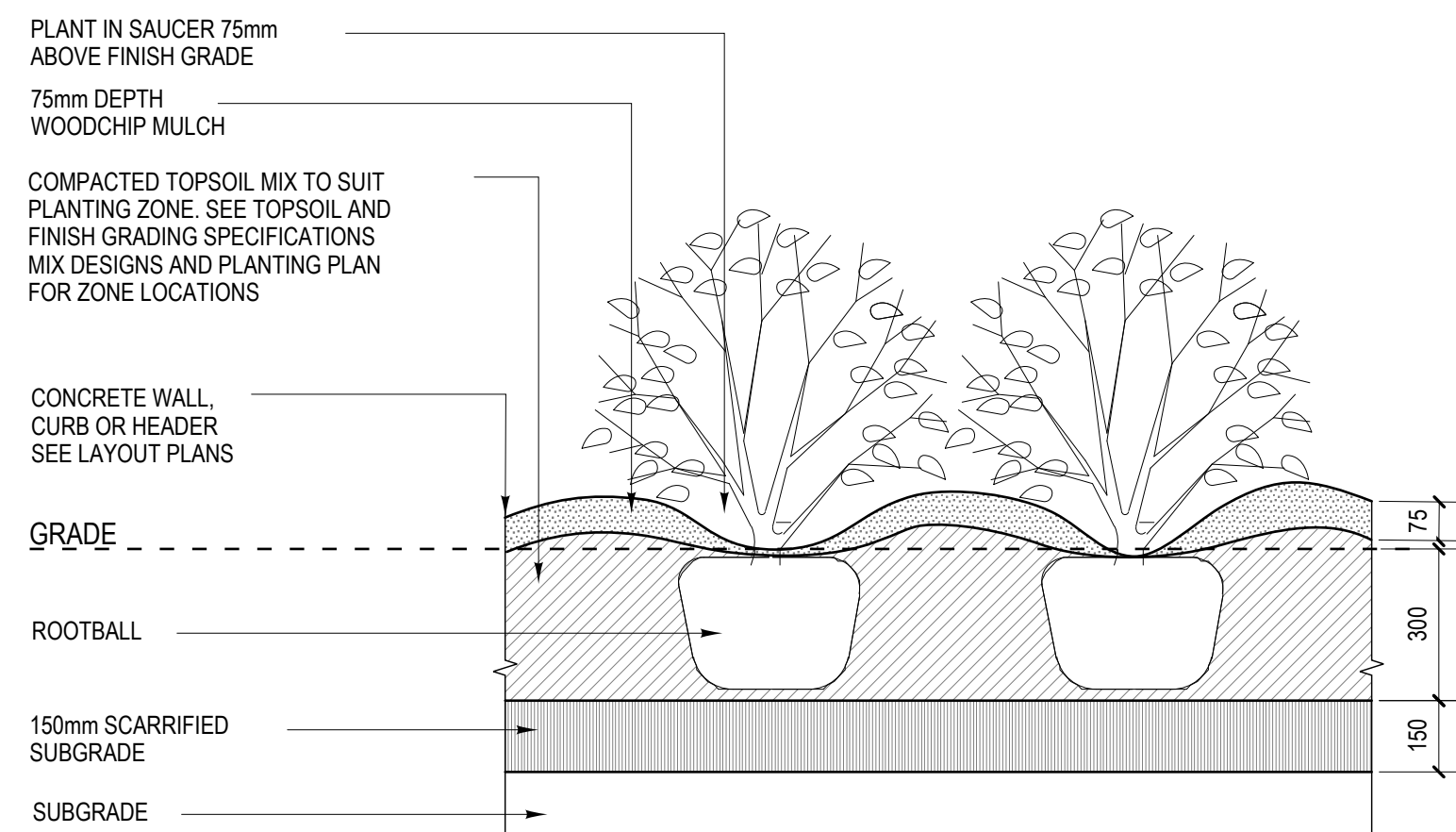


PLANTING NOTES:

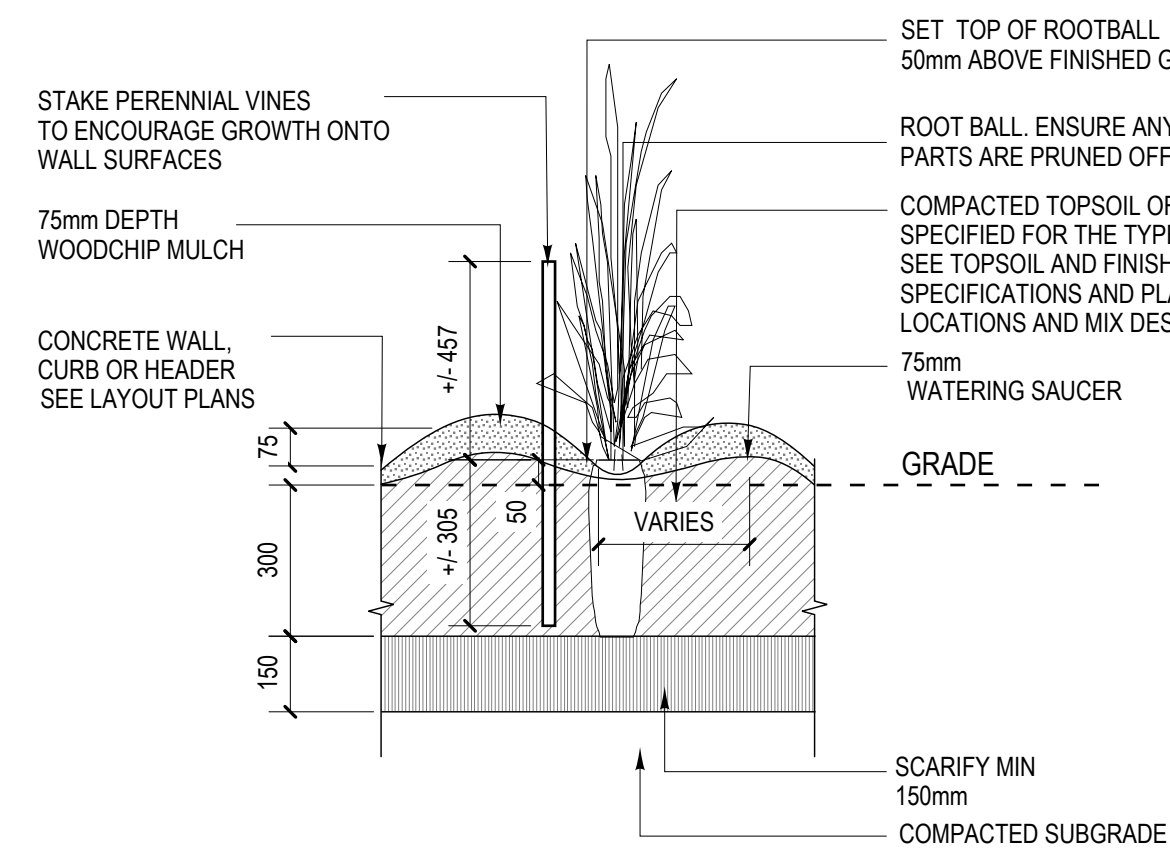
1. ENSURE THE LOCATION OF ALL EXISTING AND NEW SERVICES SERVICES ARE CLEARLY LOCATED ON SITE PRIOR TO PLANTING. THE CONTRACTOR WILL BE RESPONSIBLE FOR REPAIRING ALL DAMAGE CAUSED TO SERVICES DURING LANDSCAPE CONSTRUCTION.
2. OBTAIN APPROVAL OF TOPSOIL PLACEMENT AND GRADING PRIOR TO COMMENCING PLANTING OPERATIONS.
3. DO NOT STORE PLANT MATERIALS ON SITE. REFER TO SPECIFICATIONS FOR PROPER STORAGE AND HANDLING. PLANTS STORED INAPPROPRIATELY ON SITE WILL NOT BE ACCEPTED FOR INSTALLATION.
4. LAYOUT PLANT MATERIAL IN POTS FOR APPROVAL OF CONTRACT ADMINISTRATOR APPROVAL PRIOR TO INSTALLATION.
5. PRUNE AND MAINTAIN EXISTING TREES DURING CONSTRUCTION AS DIRECTED BY CONTRACT ADMINISTRATOR AND SPECIFIED.
6. PLANT ONLY WHEN FAVOURABLE CONDITIONS ARE PRESENT AS SPECIFIED.
7. REPORT ANY DISCREPANCIES TO THE CONTRAC ADMINISTRATOR IMMEDIATELY.
8. MULCH IMMEDIATELY AFTER PLANTING PER DETAILS AND PLANTING SPECIFICATIONS.

PLANT SPECIFICATION LIST

Quantity	Botanical / Common Name	Size / Remarks
<b>Coniferous Shrubs</b>		
33	Juniperus sabina 'Blue Danube' / Blue Danube Juniper	min 450 mm ø. Well formed, even growth. Container stock.
45	Juniperus sabina 'Savin' / Savin Juniper	min 450 mm ø. Well formed, even growth. Container stock.
<b>Deciduous Shrubs</b>		
50	Berberis thunbergii 'Bailone' / Ruby Carousel Barberry	min 300-400 mm ht. 4 major basal branches. Well formed, bushy plants. Container stock.
6	Cornus sericea / Red Osier Dogwood	min 500-600 mm ht. 5 major basal branches. Well formed, bushy plants. Container stock.
8	Euonymus alatus 'Compactus' / Compact Winged Burning Bush	min 300-400 mm ht. 4 major basal branches. Well formed, bushy plants. Container stock.
43	Hydrangea arborescens 'Annabelle' / Annabelle Hydrangea	min 300-400 mm ht. 4 major basal branches. Well formed, bushy plants. Container stock.
95	Ribes alpinum / Alpine Currant	min 300-400 mm ht. 4 major basal branches. Well formed, bushy plants. Container stock.
9	Sorbaria sorbifolia / Ash Leaf Spirea	min 500-600 mm ht. 5 major basal branches. Well formed, bushy plants. Container stock.
7	Symphoricarpos occidentalis / White Snowberry	min 300-400 mm ht. 4 major basal branches. Well formed, bushy plants. Container stock.
26	Rhus glabra / Smooth Sumac	min 300-400 mm ht. 4 major basal branches. Well formed, bushy plants. Container stock.
<b>Perennials and Vines</b>		
82	Hosta 'Blue Angel' / Blue Angel Hosta	1 yr. plants from Division. No. 1 Grade, well developed, bushy plants with vigorous, healthy root system.
150	Lysimachia nummularia / Creeping Jenny	1 yr. plants from Division. No. 1 Grade, well developed, bushy plants with vigorous, healthy root system.
20	Matteuccia struthiopteris / Native Fern	1 yr. plants from Division. No. 1 Grade, well developed, bushy plants with vigorous, healthy root system.
23	Parthenocissus quinquefolia / Virginia Creeper	1 yr. plants from Division. No. 1 Grade, well developed, bushy plants with vigorous, healthy root system.
235	Polemonium caeruleum / Jacob's Ladder	1 yr. plants from Division. No. 1 Grade, well developed, bushy plants with vigorous, healthy root system.

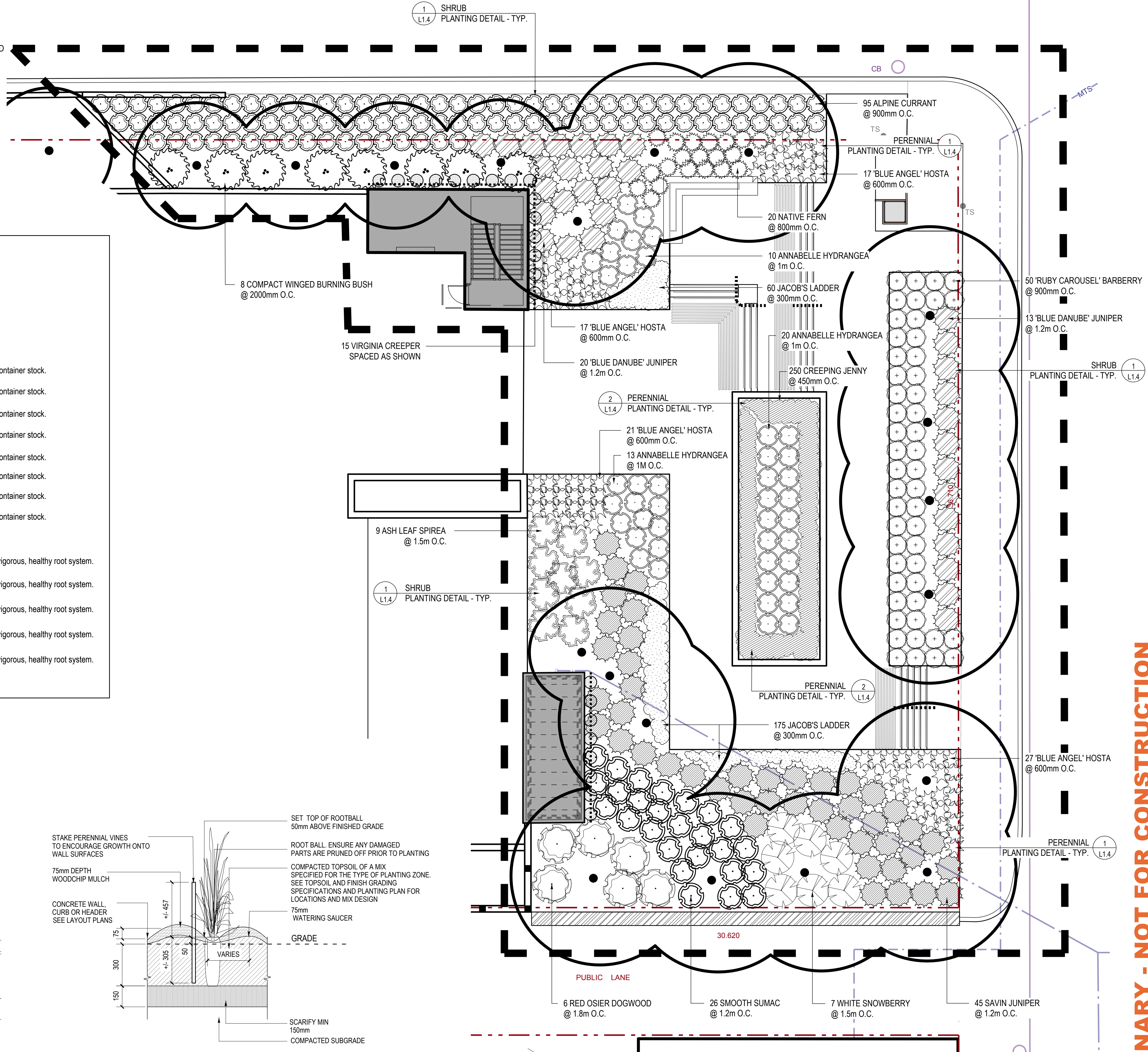


1 SHRUB PLANTING DETAIL - TYP.  
SCALE 1:15



2 PERENNIAL PLANTING DETAIL - TYP.  
SCALE 1:15

3 PLANTING PLAN  
SCALE 1:100



NOTES

LEGEND

1 - ISSUED FOR TENDER	JUNE 16, 2014
ISSUE NOTES	DATE

THIS DRAWING MUST NOT BE SCALED.  
THE GENERAL CONTRACTOR SHALL VERIFY ALL DIMENSIONS, DATUMS AND LEVELS PRIOR TO COMMENCEMENT OF WORK. ALL ERRORS AND OMISSIONS TO BE REPORTED IMMEDIATELY TO THE LANDSCAPE ARCHITECT.  
VARIATIONS & MODIFICATIONS TO WORK SHOWN ON THESE DRAWINGS SHALL NOT BE CARRIED OUT WITHOUT WRITTEN PERMISSION FROM THE LANDSCAPE ARCHITECT.  
THIS DRAWING IS THE EXCLUSIVE PROPERTY OF THE LANDSCAPE ARCHITECTS AND CAN BE REPRODUCED ONLY WITH THE PERMISSION OF THE LANDSCAPE ARCHITECTS, IN WHICH CASE THE REPRODUCTION MUST BEAR THEIR NAME AS LANDSCAPE ARCHITECTS.

PROFESSIONAL SEALS

**HTFC**  
PLANNING & DESIGN  
500-115 Bannatyne Avenue East Winnipeg, MB R3B 0R3  
PHONE 204 944 9907 WEB htfc.mb.ca

PROJECT TITLE

MILLENNIUM LIBRARY PARK  
PHASE TWO  
- ST MARY & SMITH ENTRANCE  
WINNIPEG, MANITOBA

SHEET TITLE

PLANTING PLAN & DETAILS

DRAWN RG	REVIEWED MG	DRAWING NO. L1.4
SCALE AS NOTED	PROJECT No. 14-020	
DATE PRINTED 9:51 AM Mon, Jun 23, 2014		

PRELIMINARY - NOT FOR CONSTRUCTION