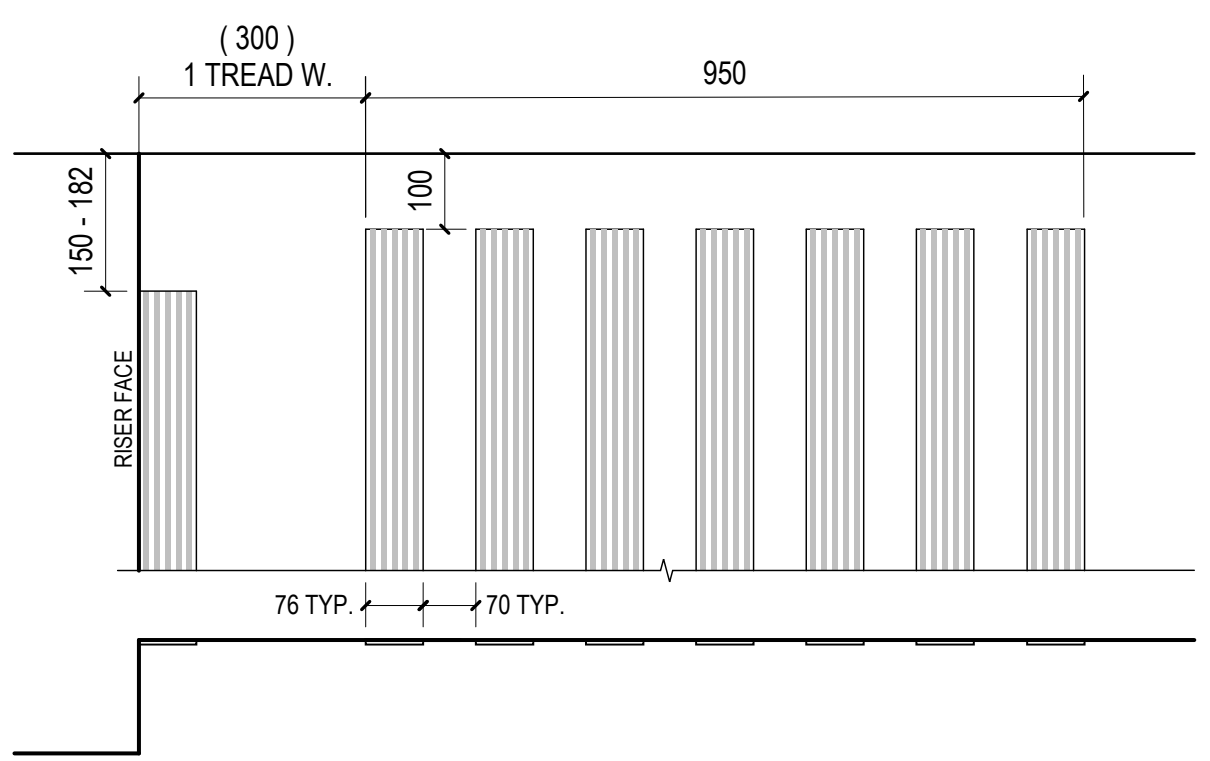
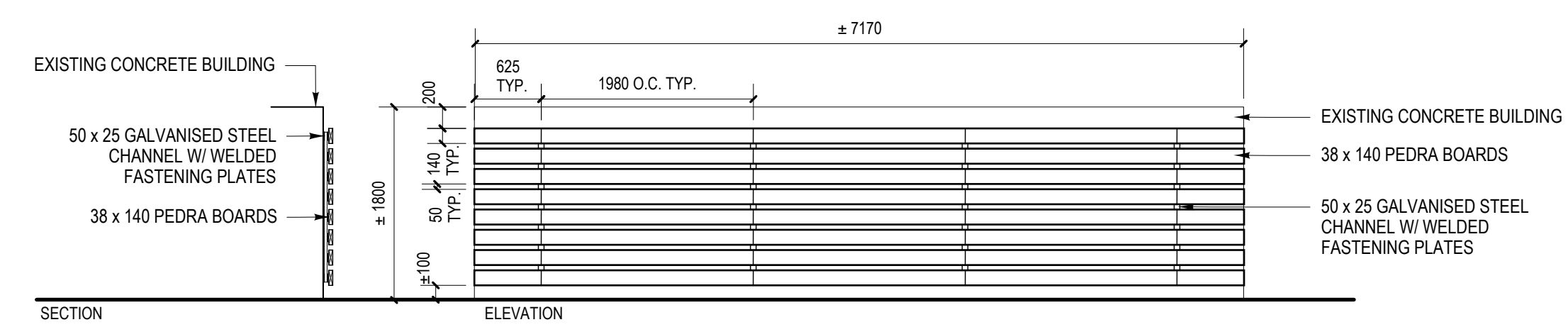
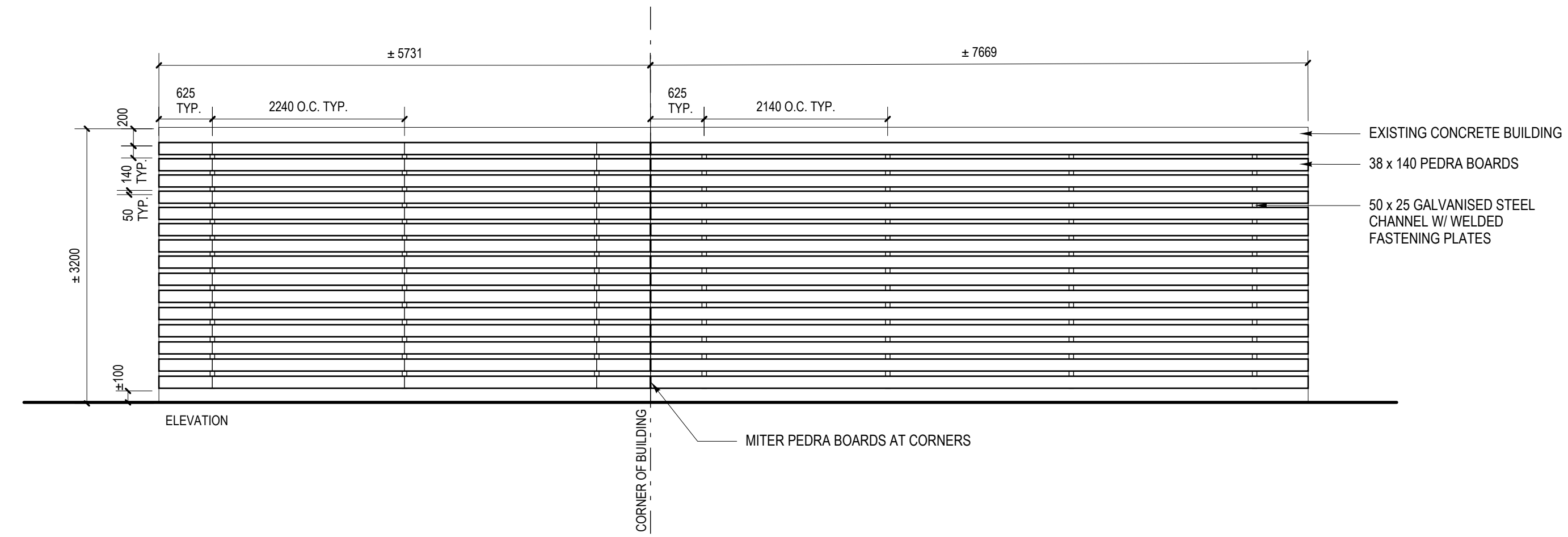


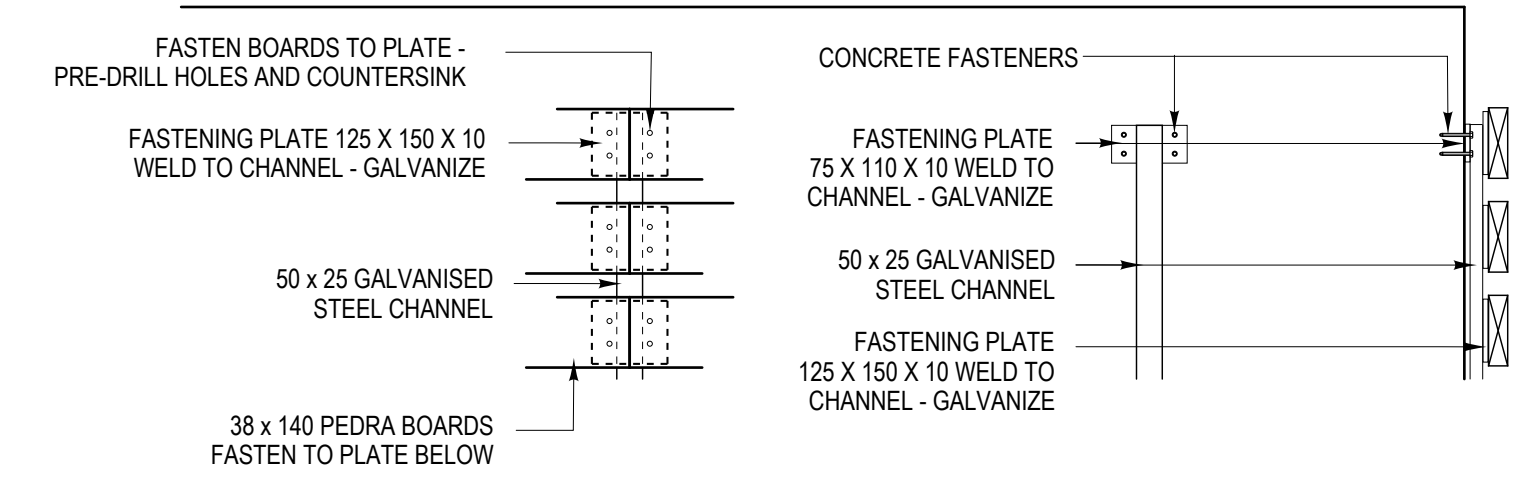
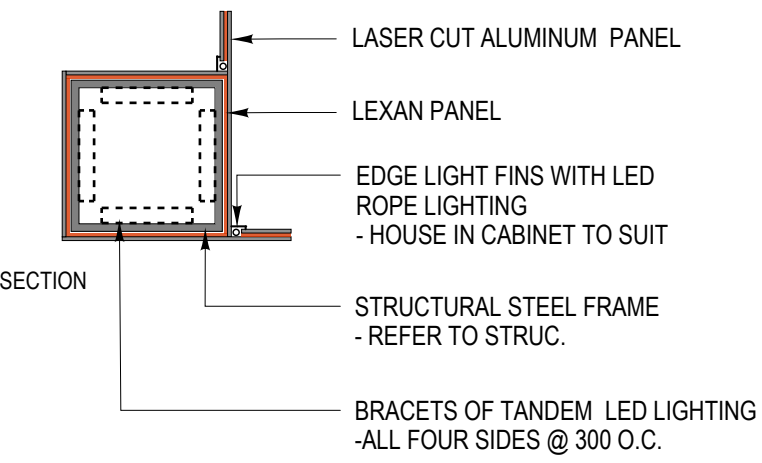
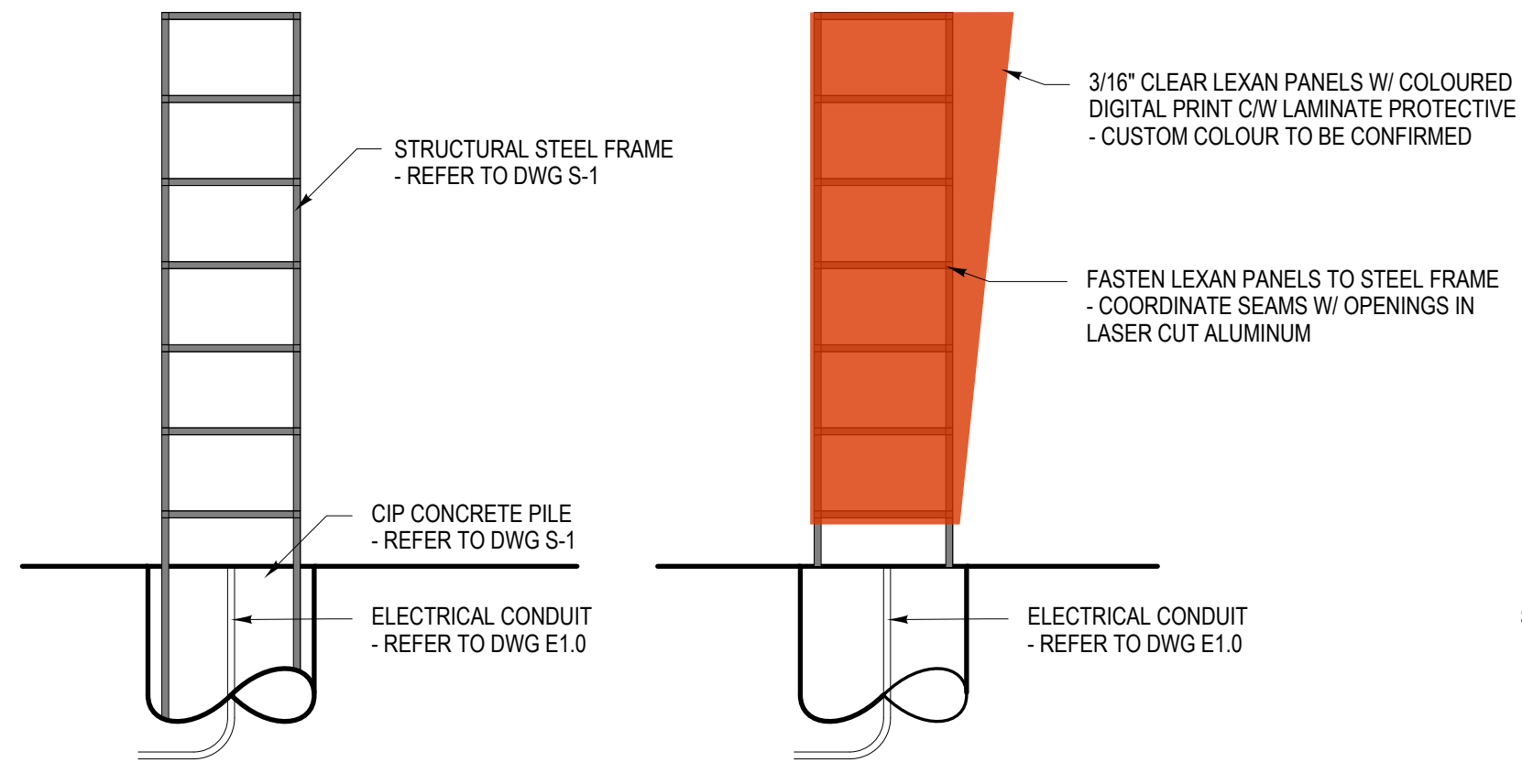
SCALE 1:1



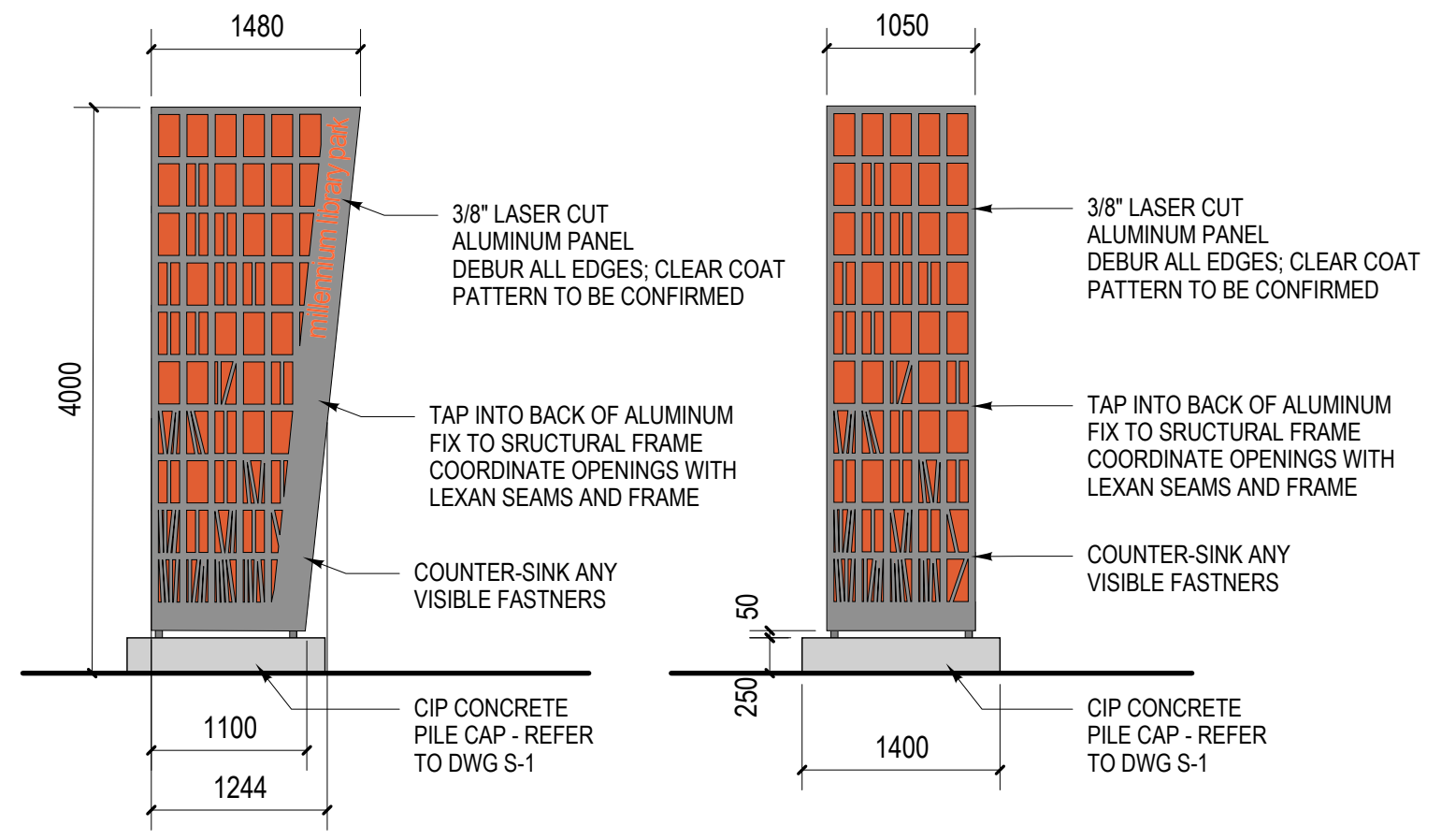
1 DETECTABLE WARNING SURFACE
L1.6 SCALE 1:30



3 WOOD & STEEL LATTICE
L1.6 SCALE 1:50



4 WOOD & STEEL LATTICE DETAIL
L1.6 SCALE 1:15



2 ILLUMINATED ENTRY FEATURE
L1.6 SCALE 1:50

- ENTRY FEATURE NOTES:**
1. CONTRACT ADMINISTRATOR TO PROVIDE DIGITAL EPS, PDF OR AI FILES AS REQUESTED FOR LASER CUT GRAPHICS.
 2. PROVIDE SHOP DRAWINGS AND SAMPLES OF PANELS AS SPECIFIED.
 3. ENSURE ALL METAL IS WELDED AND FABRICATED IN A SHOP ENVIRONMENT AND WELD IS CLEAN AND PRECISE TO SPECIFIED STANDARDS.
 4. ENSURE ALL FASTENERS ARE HEAVY DUTY, NON CORRODING EXTERIOR GRADE APPROPRIATE TO THE MATERIALS BEING FASTENED.
 5. ENSURE ALL BASES AND FOUNDATIONS ARE FORMED AND ALL ELECTRICAL AND MECHANICAL CONNECTIONS ARE IN PLACE AND APPROVED AS ELECTRICAL SPECIFICATIONS PRIOR TO PROCEEDING WITH FINISH INSTALLATION.

1 - ISSUED FOR TENDER	JUNE 16, 2014
ISSUE NOTES	DATE

THIS DRAWING MUST NOT BE SCALED.
THE GENERAL CONTRACTOR SHALL VERIFY ALL DIMENSIONS, DATUMS AND LEVELS PRIOR TO COMMENCEMENT OF WORK. ALL ERRORS AND OMISSIONS TO BE REPORTED IMMEDIATELY TO THE LANDSCAPE ARCHITECT.
VARIATIONS & MODIFICATIONS TO WORK SHOWN ON THESE DRAWINGS SHALL NOT BE CARRIED OUT WITHOUT WRITTEN PERMISSION FROM THE LANDSCAPE ARCHITECT.
THIS DRAWING IS THE EXCLUSIVE PROPERTY OF THE LANDSCAPE ARCHITECTS AND CAN BE REPRODUCED ONLY WITH THE PERMISSION OF THE LANDSCAPE ARCHITECTS, IN WHICH CASE THE REPRODUCTION MUST BEAR THEIR NAME AS LANDSCAPE ARCHITECTS.

PROFESSIONAL SEALS

HTFC
PLANNING & DESIGN
500-115 Bannatyne Avenue East Winnipeg, MB R3B 0R3
PHONE 204 944 9907 WEB htfc.mb.ca

PROJECT TITLE
**MILLENNIUM LIBRARY PARK
PHASE TWO
- ST MARY & SMITH ENTRANCE**
WINNIPEG, MANITOBA

SHEET TITLE
DETAILS

DRAWN RG	REVIEWED MG	DRAWING NO. L1.6
SCALE AS NOTED	PROJECT No. 14-020	DATE PRINTED 3:17 PM Mon, Jun 23, 2014

PRELIMINARY - NOT FOR CONSTRUCTION