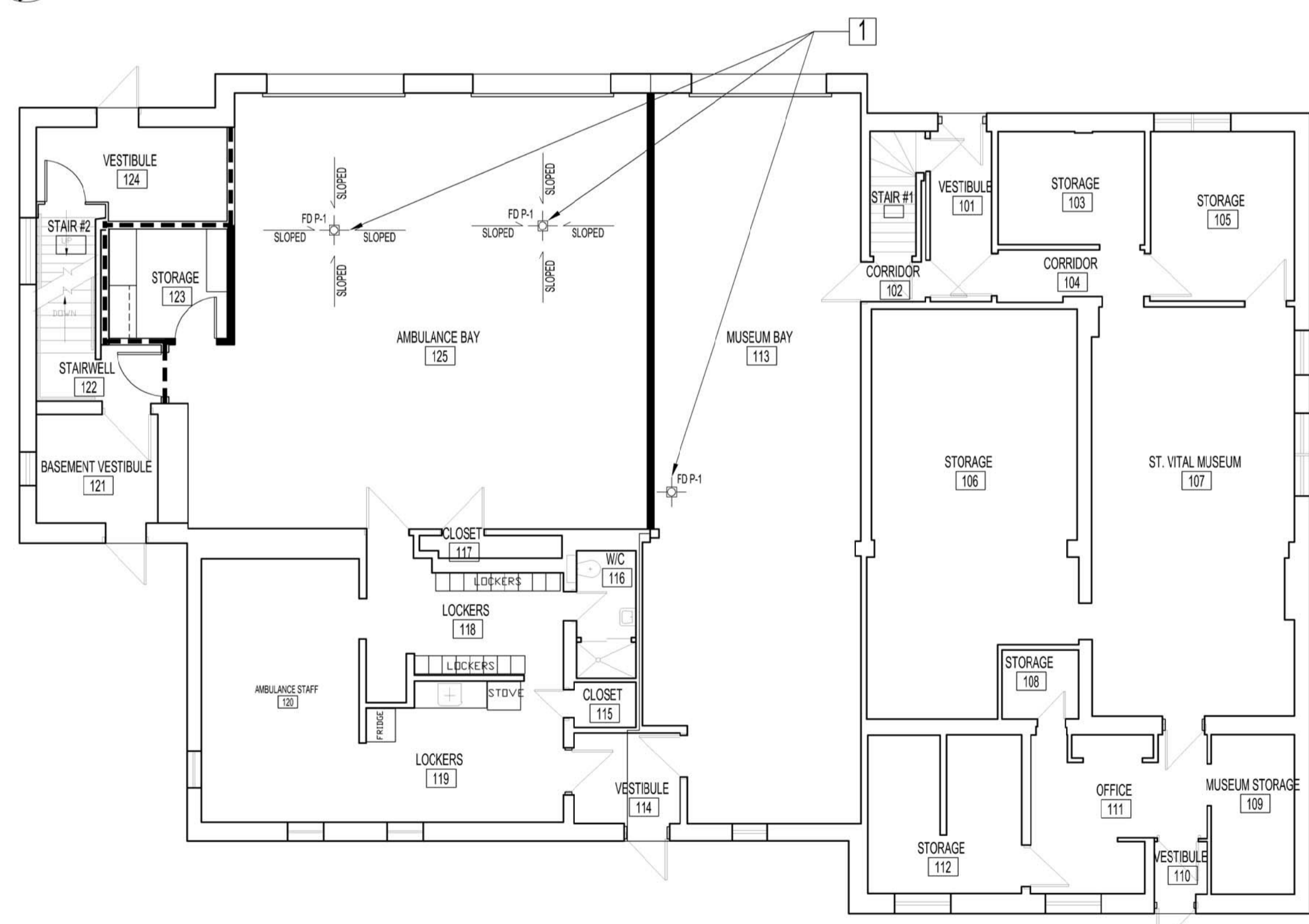


- PARTIAL BASEMENT PLUMBING RENOVATION NOTES:**
- EXISTING TO REMAIN  
SUPPLY & INSTALL NEW UNLESS OTHERWISE NOTED.  
ALSO SEE PLUMBING EQUIPMENT SCHEDULE.
- (3) NEW 3" PVC SCHEDULE 40, DRAIN PIPES COMPLETE WITH RISERS, FITTINGS, CLEANOUTS, NEOPRENE BREAKS & CLEVIS HANGERS, SUPPORT RODS & SHIELD ANCHORS FOR NON INSULATED PIPING. CONNECT & SLOPE TO EXISTING SAND TRAP / HOLDING TANK. SUPPLY & INSTALL CLEVIS HANGERS AT CONNECTIONS ENDS AND AT EVERY 6'-0" - 7'-0" OF PIPE RUNS. ALL MAIN FLOOR DRAIN LINE CONNECTIONS TO BE BELOW MAIN FLOOR CONCRETE SLAB. NO IN CONCRETE SLAB FITTING CONNECTIONS ACCEPTABLE.
  - SUPPLY AND INSTALL NEW HOT AND COLD DOMESTIC WATER SUPPLY PIPING AS SHOWN.
  - NEW 1" COPPER COLD SUPPLY LINE TAKE-OFF FROM MAIN BRANCH TO NEW CONDENSATE TANK. RE-LOCATE & CONNECT EXISTING CHECK VALVE IN LINE INTO NEW SUPPLY LINE.
  - NEW LOCATION OF DOUBLE CHECK VALVE, BACK FLOW PREVENTION DEVICES & DRAIN LINES FOR NEW CONDENSATE TANK. CONTRACTOR TO INSPECT REPAIR AS REQUIRED AND RE-CERTIFY OR SUPPLY & INSTALL NEW AND CERTIFY.
  - SUPPLY & INSTALL (2) 90° FITTINGS AT MAIN SUPPLY BRANCHES. ALSO SEE PLUMBING DEMOLITION DWG. NOTE # 1.
  - ALL PENETRATIONS THROUGH FIRE SEPARATION SHALL BE FIRESTOPPED TO A 1 HOUR FIRE RESISTANCE RATING.
  - REINSTALL 40 GALLON ELECTRIC HOT WATER TANK. CONNECT WATER AND POWER TO TANK AS REQUIRED.

NOTES:

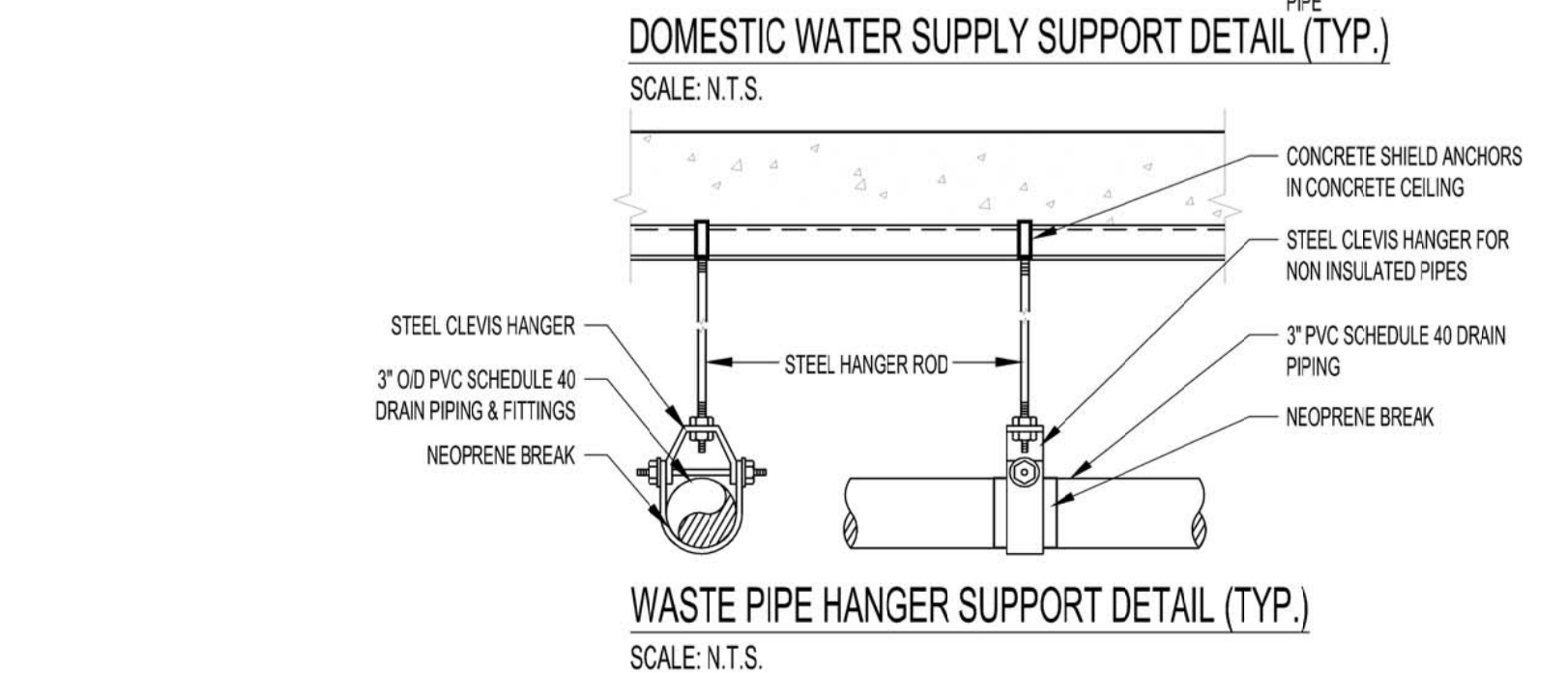
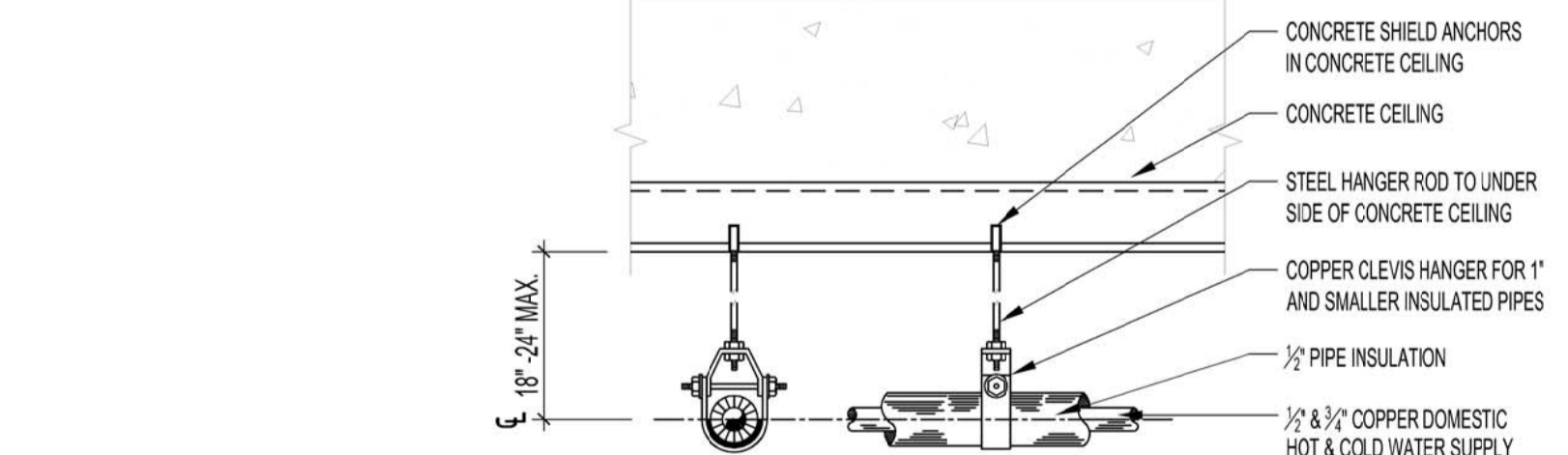
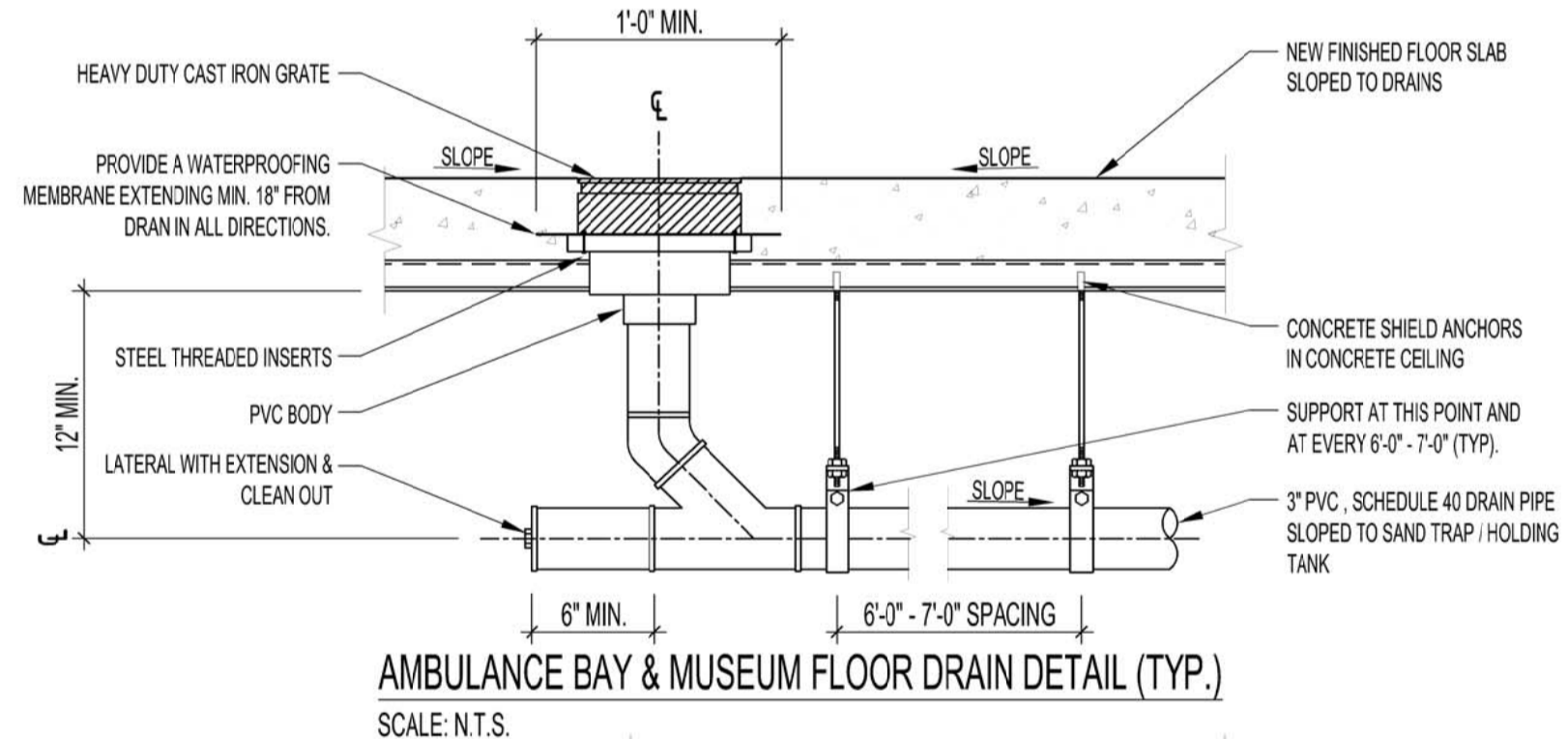
1 PARTIAL BASEMENT FLOOR PLAN - PLUMBING RENOVATION  
M4 M4 SCALE: 1/4"=1'-0"



- MAIN FLOOR PLUMBING RENOVATION NOTES:**
- SUPPLY & INSTALL (2) NEW AMBULANCE BAY & (1) MUSEUM BAY FLOOR DRAINS. CONNECT TO NEW BASEMENT DRAIN LINES. INSTALL AS PER MANUFACTURER RECOMMENDATIONS.

PLUMBING SYMBOLS	
SYMBOL	DESCRIPTION
EX	SHUT-OFF VALVE (EXISTING TO REMAIN)
D	SHUT-OFF VALVE (REMOVE & DISCARD)
N	SHUT-OFF VALVE (SUPPLY & INSTALL)
— CV —	COLD WATER LINE
— HW —	HOT WATER LINE
— STDR —	ABOVE FLOOR DRAIN LINE
DHWT	DOMESTIC HOT WATER TANK (REMOVE AND RETAIN)
CB	FLOOR DRAIN & CATCH BASIN (EXISTING TO REMAIN)
ST	ABOVE FLOOR SEDIMENT TRAP / HOLDING TANK (EXISTING TO REMAIN)
C/O	CLEAN-OUT
BWV	IN-LINE AUTOMATIC BACK WATER VALVE & PIT
WSP	WATER SPIGOT
FDL	FLOOR DRAINS
—	NEW WALLS - SEE WALL TYPES
—	NEW WALLS - 1 HOUR FIRE RATED - SEE A1

PLUMBING EQUIPMENT SCHEDULE		
TAG	TYPE	DESCRIPTION
P-1		FLOOR DRAIN: ZURN FD-2330 HEAVY DUTY ADJUSTABLE COMPLETE WITH FITTINGS AND 3" PVC HUB



ORIGINAL SEALED BY:  
D.A. Paley P. Eng.  
Date: JULY 16, 2014

No.	REVISION/DESCRIPTION	BY	DATE
SEAL			

DATE	DATE	DATE	DATE	DATE
2014.07.14				

THE CITY OF WINNIPEG  
PLANNING, PROPERTY AND  
DEVELOPMENT DEPARTMENT  
MUNICIPAL ACCOMMODATIONS DIVISION  
3-65 GARRY STREET, R3C 4K4

PROJECT  
AMBULANCE STATION #3  
STRUCTURAL & OCCUPANCY UPGRADES  
DESIGN OF STRUCTURAL UPGRADES  
598 ST. MARY'S ROAD

SHEET TITLE  
BASEMENT & MAIN FLOOR PLAN  
PLUMBING  
RENOVATION

SCALE	PROJECT No:	SHEET No:
AS SHOWN	2013-047	M4