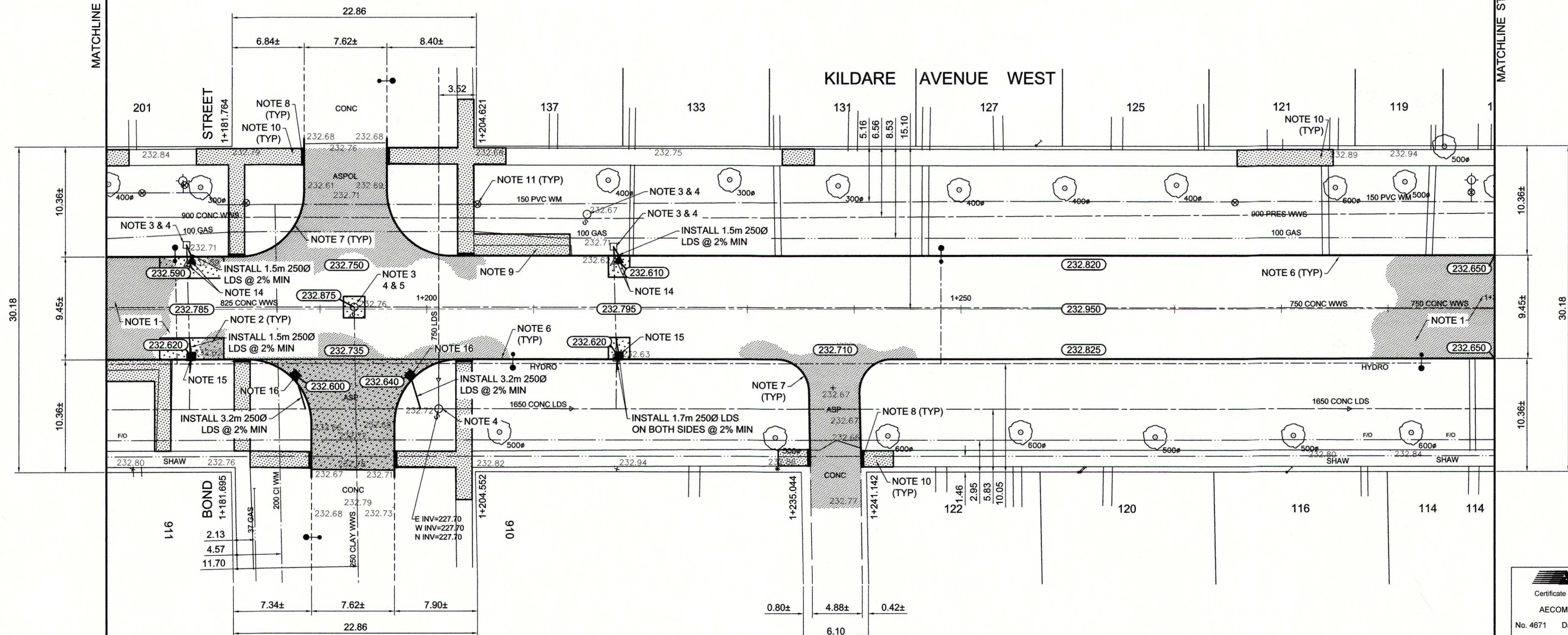


- REFERENCE NOTES**
- A. PAVEMENT DIMENSIONS ARE TO BACK OF CURB
 - B. BASELINE IS CENTRE LINE RIGHT-OF-WAY
 - C. PROPERTY LINES OBTAINED FROM CITY OF WINNIPEG L.B.I.S., AND NO SCALE FACTOR WAS APPLIED
 - D. REFER TO AECOM FIELD BOOK NO. 4807

- CONSTRUCTION NOTES**
1. REMOVE EXISTING ASPHALTIC PAVEMENT AND PLACE NEW ASPHALTIC PAVEMENT TYPE 1A (AVG THICKNESS 85mm)
 2. REMOVE EXISTING CONCRETE PAVEMENT AND CONSTRUCT NEW 200mm REINFORCED CONCRETE PAVEMENT c/w 85mm ASPHALT OVERLAY
 3. REMOVE EXISTING FRAME AND COVER AND INSTALL NEW FRAME AND COVER (AP-005 AND AP-004)
 4. ADJUST EXISTING MANHOLE/CATCH BASIN TO GRADE
 5. INSTALL NEW CAST IRON RISER RING
 6. RENEW EXISTING BARRIER CURB (100mm REVEAL HT. DOWELLED)
 7. REMOVE EXISTING CURB AND CONSTRUCT NEW MODIFIED BARRIER CURB (100mm REVEAL HT. DOWELLED)
 8. CONSTRUCT NEW CURB RAMP (10mm HT. MONOLITHIC)
 9. REMOVE EXISTING PATIO BLOCK BUS PAD AND CONSTRUCT NEW 100mm CONCRETE SIDEWALK
 10. RENEW EXISTING 100mm CONCRETE SIDEWALK
 11. ADJUST EXISTING WATER VALVE TO GRADE
 12. ADJUST EXISTING CURB STOP
 13. REMOVE EXISTING INLET AND INSTALL NEW CURB AND GUTTER INLET c/w CATCHPIT (SD-023) AND CONNECT TO EXISTING LEAD
 14. REMOVE EXISTING INLET AND INSTALL NEW CURB AND GUTTER INLET c/w CATCHPIT (SD-023) AND CONNECT TO EXISTING CATCHBASIN
 15. REMOVE EXISTING CATCHBASIN AND INSTALL NEW CURB AND GUTTER INLET c/w CATCHBASIN (SD-024) AND CONNECT TO EXISTING LEADS
 16. INSTALL NEW CURB AND GUTTER INLET c/w CATCHBASIN (SD-024) AND CONNECT TO EXISTING 1650mm CONCRETE LDS



METRIC
WHOLE NUMBERS INDICATE MILLIMETRES
DECIMALIZED NUMBERS INDICATE METRES

EXISTING	LEGEND - PLAN	PROPOSED	EXISTING	LEGEND - PLAN	PROPOSED	EXISTING	LEGEND - PROFILE	PROPOSED
150mm W.M.	WATERMAIN	150mm W.M.	Hydro	M.T.S.	Hydro	---	C PROFILE	---
300mm L.D.S.	LAND DRAINAGE SEWER	300mm L.D.S.	CONCRETE	CONCRETE	CONCRETE	---	NORTH/WEST GUTTER	---
250mm W.W.S.	WASTEWATER SEWER	250mm W.W.S.	ASPHALT	ASPHALT	ASPHALT	---	SOUTH/EAST GUTTER	---
Manhole	MANHOLE	Manhole	PROPERTY LINE	PROPERTY LINE	PROPERTY LINE	---	N/W PROPERTY LINE	---
Catch Basin	CATCH BASIN	Catch Basin	SURVEY BAR	SURVEY BAR	SURVEY BAR	---	S/E PROPERTY LINE	---
Catch Pit	CATCH PIT	Catch Pit	ELEVATION	ELEVATION	ELEVATION	---		
Junctions	JUNCTIONS	Junctions	Tree	TREE	TREE	---		
Culvert	CULVERT	Culvert	Sidewalk Ramp	SIDEWALK RAMP	SIDEWALK RAMP	---		
Gas	GAS	Gas	Concrete Sidewalk	CONCRETE SIDEWALK	CONCRETE SIDEWALK	---		
Existing	LEGEND - PLAN	Proposed	Existing	LEGEND - PLAN	Proposed	Existing	LEGEND - PROFILE	Proposed

LOCATION APPROVED UNDERGROUND STRUCTURES

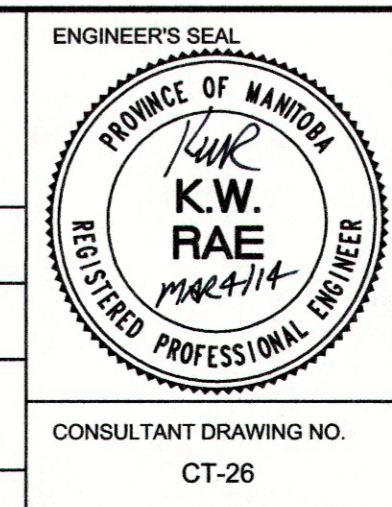
SUPV. U/G STRUCTURES COMMITTEE DATE

NOTE: LOCATION OF UNDERGROUND STRUCTURES AS SHOWN ARE BASED ON THE BEST INFORMATION AVAILABLE. BUT NO GUARANTEE IS GIVEN THAT ALL EXISTING UTILITIES ARE SHOWN OR THAT THE GIVEN LOCATIONS ARE EXACT. CONFIRMATION OF EXISTENCE AND EXACT LOCATION OF ALL SERVICES MUST BE OBTAINED FROM THE INDIVIDUAL UTILITIES BEFORE PROCEEDING WITH CONSTRUCTION.

B.M. ELEV.	1236-C 233.016	Tilt in E conc foundation of bungalow with attached garage, #23 Burnaby Bay, 3.2m N of SE corner of building
NO.	REVISIONS	DATE BY
0	ISSUED FOR TENDER	03/04/14 BC
A	ISSUED FOR REVIEW	02/07/14 BC

AECOM

DESIGNED BY	BC/SS	CHECKED BY	KWR
DRAWN BY	PB/RT	APPROVED BY	
HOR. SCALE:	1:250	RELEASED FOR CONSTRUCTION BY	
VERTICAL:	1:10	DATE	Mar 4/14



THE CITY OF WINNIPEG
PUBLIC WORKS DEPARTMENT
ENGINEERING DIVISION

2014 LOCAL STREET RENEWAL PROGRAM

KILDARE AVENUE WEST - BREWSTER STREET - DAY STREET
REHABILITATION
STATION 1+170 TO STATION 1+300

CITY DRAWING NUMBER
SHEET 26 OF 27

CONSULTANT DRAWING NO. CT-26