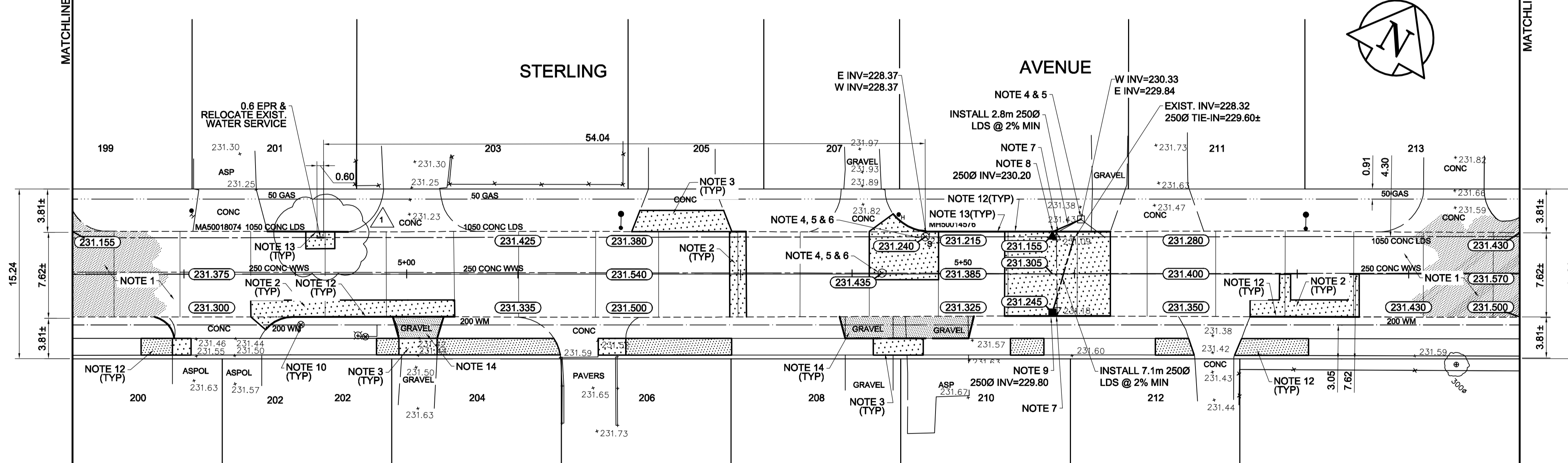


- REFERENCE NOTES**
- A. PAVEMENT DIMENSIONS ARE TO BACK OF CURB
  - B. BASELINE IS CENTRE LINE RIGHT-OF-WAY
  - C. PROPERTY LINES OBTAINED FROM CITY OF WINNIPEG L.B.I.S., AND NO SCALE FACTOR WAS APPLIED
  - D. REFER TO AECOM FIELD BOOK NO. 4815

- CONSTRUCTION NOTES**
1. PLACE NEW ASPHALTIC PAVEMENT TYPE1A (AVG. THICKNESS 85mm)
  2. REMOVE EXISTING CONCRETE PAVEMENT AND CONSTRUCT NEW 150mm REINFORCED CONCRETE PAVEMENT *o/w* 85mm ASPHALT OVERLAY
  3. REMOVE EXISTING CONCRETE PAVEMENT AND CONSTRUCT NEW 150mm REINFORCED CONCRETE PAVEMENT
  4. REMOVE EXISTING FRAME AND COVER AND INSTALL NEW FRAME AND COVER (AP-005 AND AP-004)
  5. ADJUST EXISTING MANHOLE/CATCH BASIN TO GRADE
  6. INSTALL NEW CAST IRON RISER RING
  7. REMOVE EXISTING INLET AND ABANDON LEAD
  8. INSTALL NEW CURB AND GUTTER INLET *o/w* CATCHPIT (SD-023) AND CONNECT TO EXISTING CATCHBASIN
  9. INSTALL NEW CURB AND GUTTER INLET *o/w* CATCHBASIN (SD-024) AND CONNECT TO EXISTING 1050 CONCRETE LDS
  10. ADJUST EXISTING WATER VALVE TO GRADE
  11. RENEW EXISTING 100mm CONCRETE SIDEWALK
  12. CONSTRUCT NEW BARRIER CURB (100mm REVEAL HT. SEPARATE)
  13. REMOVE EXISTING CURB AND CONSTRUCT NEW BARRIER CURB (100mm REVEAL HT. DOWELLED)
  14. REGRADE EXISTING GRAVEL APPROACH AND OVERLAY WITH NEW ASPHALTIC PAVEMENT



**METRIC.**  
WHOLE NUMBERS INDICATE MILLIMETRES  
DECIMALIZED NUMBERS INDICATE METRES

EXISTING	LEGEND - PLAN	PROPOSED	EXISTING	LEGEND - PLAN	PROPOSED	EXISTING	LEGEND - PROFILE	PROPOSED
	WATERMAIN			HYDRO M.T.S.			C PROFILE	
	VALVE			CONCRETE			NORTHWEST GUTTER	
	LAND DRAINAGE SEWER			ASPHALT			SOUTHEAST GUTTER	
	WASTEWATER SEWER			PROPERTY LINE			N/W PROPERTY LINE	
	MANHOLE			SURVEY BAR			S/E PROPERTY LINE	
	CATCH BASIN			ELEVATION				
	CATCH PIT			TREE				
	JUNCTIONS			SIDEWALK RAMP				
	CULVERT			CONCRETE SIDEWALK				
	GAS			FENCE				

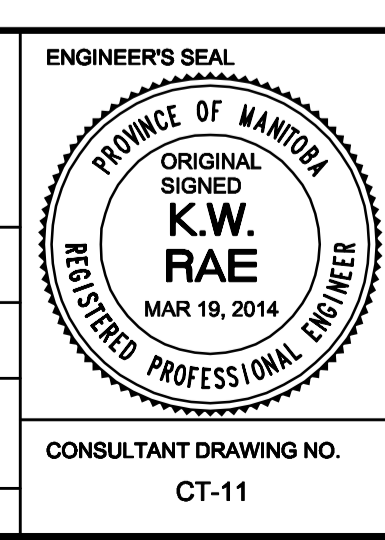
**LOCATION APPROVED UNDERGROUND STRUCTURES**

SUPV. U/G STRUCTURES COMMITTEE DATE

**NOTE:**  
LOCATION OF UNDERGROUND STRUCTURES AS SHOWN ARE BASED ON THE BEST INFORMATION AVAILABLE. BUT NO GUARANTEE IS GIVEN THAT ALL EXISTING UTILITIES ARE SHOWN OR THAT THE GIVEN LOCATIONS ARE EXACT. CONFIRMATION OF EXISTENCE AND EXACT LOCATION OF ALL SERVICES MUST BE OBTAINED FROM THE INDIVIDUAL UTILITIES BEFORE PROCEEDING WITH CONSTRUCTION.

NO.	REVISIONS	DATE	BY
1	ADDENDUM	03/31/2014	BC
0	ISSUED FOR TENDER	03/20/2014	BC
A	ISSUED FOR REVIEW	02/13/2014	BC

B.M. ELEV. 62-012 232.707	NE corner Knightsbridge Dr & Ashworth St. 1.5m below stucco & 1.0m N of SW corner
<b>AECOM</b>	
DESIGNED BY BC/SS	CHECKED BY KWR
DRAWN BY RT	APPROVED BY
HOR. SCALE: 1:250	RELEASED FOR CONSTRUCTION BY:
VERTICAL: 1:10	DATE MARCH 2014



**THE CITY OF WINNIPEG**  
PUBLIC WORKS DEPARTMENT  
ENGINEERING DIVISION

2014 LOCAL STREET RENEWAL PROGRAM

STERLING AVENUE - ASHWORTH STREET TO ST. ANNE'S ROAD  
REHABILITATION  
STATION 4+70 TO STATION 6+00

CITY DRAWING NUMBER SHEET 11 OF 27

CONSULTANT DRAWING NO. CT-11