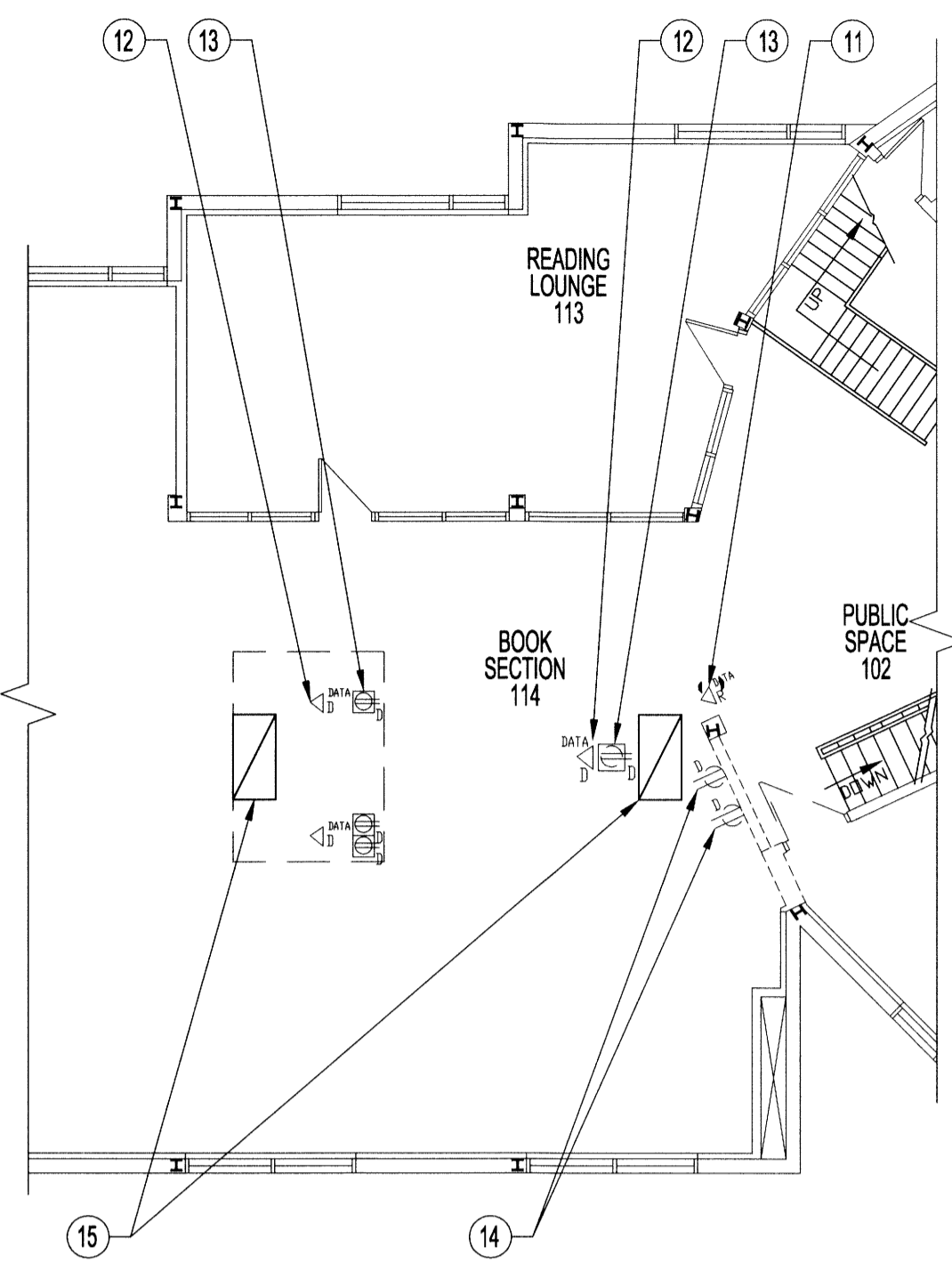


1 BASEMENT PLAN - ELECTRICAL DEMOLITION
E1 E1 SCALE 1/8" = 1'-0"



2 MAIN FLOOR PLAN - ELECTRICAL DEMOLITION
E1 E1 SCALE 1/8" = 1'-0"

ELECTRICAL DEMOLITION NOTES:

- EXISTING TO REMAIN (solid line)
 - TO BE DEMOLISHED (dashed line)
- 1 EXISTING CHAIN HUNG FLUORESCENT LIGHTING TO REMAIN. RAISE LIGHTING TO SUIT RELOCATED HVAC DUCTWORK AS REQUIRED.
 - 2 REMOVE AND DISCARD EXISTING CHAIN HUNG FLUORESCENT LIGHTING. AS REQUIRED TO ACCOMMODATE NEW ELEVATOR SHAFT. POWER FOR LIGHTING TO BE REMOVED BACK TO SOURCE.
 - 3 EXISTING THERMOSTAT TO BE REMOVED AND RELOCATED - SEE ELECTRICAL RENOVATION PLAN - NOTE 5.
 - 4 EXISTING EMERGENCY BUTTON TO REMAIN.
 - 5 EXISTING CHAIN HUNG FLUORESCENT LIGHTING TO REMAIN.
 - 6 EXISTING CHAIN HUNG FLUORESCENT LIGHTING TO BE RELOCATED AS PER ELECTRICAL RENOVATION PLAN - NOTE 8.
 - 7 EXISTING ELECTRICAL CONDUIT TO REMAIN.
 - 8 EXISTING DATA/COMMUNICATION WIRE TO REMAIN.
 - 9 EXISTING ELECTRICAL CONDUIT TO BE REMOVED AND REINSTALLED TO ACCOMMODATE NEW ELEVATOR SHAFT.
 - 10 EXISTING DATA/COMMUNICATION WIRE TO BE REMOVED AND REINSTALLED TO ACCOMMODATE NEW ELEVATOR SHAFT.
 - 11 REMOVE AND RETAIN EXISTING WIFI ROUTER - REINSTALL IN NEW BULKHEAD.
 - 12 REMOVE AND DISCARD EXISTING FLOOR MOUNTED DATA CONNECTION TO ACCOMMODATE NEW ELEVATOR SHAFT. REMOVE DATA CONNECTION BACK TO SOURCE.
 - 13 REMOVE AND DISCARD EXISTING FLOOR MOUNTED DUPLEX RECEPTACLES TO ACCOMMODATE NEW ELEVATOR SHAFT. REMOVE POWER WIRING BACK TO SOURCE.
 - 14 REMOVE AND DISCARD EXISTING WALL MOUNTED DUPLEX RECEPTACLES ON EXISTING WALL TO BE DEMOLISHED. REMOVE WIRING BACK TO SOURCE.
 - 15 REMOVE AND DISCARD EXISTING 24X48 SURFACE MOUNTED LIGHT FIXTURES. POWER FOR LIGHTING TO BE REMOVED BACK TO SOURCE.

LIGHT FIXTURE SCHEDULE

TYPE	QTY	MANUFACTURER	CATALOGUE No.	LAMP	DESCRIPTION
A	1	LIGHTOLIER	QHE2GPFOP228	2X32W, T8	1'X4' CHAIN HUNG, FLUORESCENT FIXTURE, 120V, 1 PH
B	1	ANATOMY	4800-54	224XNICHIA 757 ± 64W	54" Ø SUSPENDED LED LIGHT FIXTURE 120V, 1 PH
C	4	GOATHAM	EVO SQ 35/10 4AR 120	LED	4" EVO SQUARE RECESSED LED DOWNLIGHT 120V, 1 PH
D	120	TOKSTAR	FLBK-410-1W-HB c/w	LED	LED LIGHTSTRIP, 0.2W, 8V, 1 PH
E	1	LUMACELL	RS20	DOUBLE REMOTE LAMP	2 MICRO TUNGSTON 6V, 9W
F	2	LUMACELL	RGS SERIES	DOUBLE LAMP	2 MICRO TUNGSTON 6V, 9W

ALL NEW LIGHTING FIXTURES AND BALLASTS TO BE POWERSMART APPROVED. LIGHTING FIXTURE QUANTITIES SHOWN ABOVE ARE FOR REFERENCE ONLY. CONTRACTOR IS RESPONSIBLE FOR QUANTITY TAKE-OFF FROM DRAWINGS.

ELECTRICAL SYMBOLS

SYMBOL	DESCRIPTION
D	DUPLEX RECEPTACLE (REMOVE & DISCARD)
D	FLOOR MOUNT DUPLEX RECEPTACLE (REMOVE & DISCARD)
D	DATA CONNECTION (REMOVE & DISCARD)
N	DUPLEX RECEPTACLE (SUPPLY & INSTALL)
N	SWITCH (SUPPLY & INSTALL)
EX	EXISTING CHAIN HUNG FLUORESCENT LIGHT FIXTURES TO REMAIN
D	EXISTING CHAIN HUNG FLUORESCENT LIGHT FIXTURES (REMOVE & DISCARD)
R	EXISTING CHAIN HUNG FLUORESCENT LIGHT FIXTURES (RELOCATE)
N	NEW CHAIN HUNG FLUORESCENT LIGHT FIXTURES (SUPPLY & INSTALL)
R	NEW VARIABLE RANGE HEAT DETECTOR
R	NEW SMOKE DETECTOR
M	1Ø MOTOR LOAD
H	FORCE FLOW HEATER PANEL
P	AUTOMATIC DOOR PUSHBUTTON
F	FIRE ALARM PANEL
F	REMOTE FIRE ALARM ANNUNCIATOR
I	ISOLATING MODULE
B	EMERGENCY LIGHTING BATTERY UNIT
B	REMOTE EMERGENCY LIGHTING HEADS

ELECTRICAL RENOVATION NOTES:

- 1 EXISTING CHAIN HUNG FLUORESCENT LIGHTING TO REMAIN. RAISE LIGHTING TO SUIT RELOCATED HVAC DUCTWORK AS REQUIRED.
- 2 NEW WALL MOUNTED SINGLE POLE LIGHT SWITCH IN CONTROL CLOSET B20.
- 3 NEW CHAIN HUNG FLUORESCENT LIGHT FIXTURE IN CONTROL CLOSET B20 - SEE LIGHT FIXTURE SCHEDULE TYPE 'A' FOR DETAILS.
- 4 NEW WALL MOUNTED DUPLEX RECEPTACLE FOR NEW SUMP PUMP.
- 5 EXISTING THERMOSTAT TO BE RELOCATED TO OPPOSITE SIDE OF NEW WALL AS SHOWN.
- 6 NEW DATA/COMMUNICATION WIRE TO BE INSTALLED AS SHOWN TO ACCOMMODATE NEW ELEVATOR SHAFT.
- 7 NEW ELECTRICAL CONDUIT TO BE INSTALLED AS SHOWN TO ACCOMMODATE NEW ELEVATOR SHAFT.
- 8 EXISTING CHAIN HUNG FLUORESCENT LIGHTING TO BE RELOCATED AS SHOWN.
- 9 NEW LIGHTING ON WALLS OF ELEVATOR SHAFT. SEE LIGHT FIXTURE SCHEDULE TYPE 'D' FOR DETAILS. LIGHTING TO BE WIRED BACK TO NEW SWITCH IN WORK ROOM 109. SEE ARCH. DRAWINGS FOR LOCATION OF LIGHTS. PROVIDE ALL REQUIRED ACCESSORIES AND POWER SUPPLIES.
- 10 NEW RECESSED LIGHT FIXTURES IN NEW DRYWALL BULKHEAD AS SHOWN. SEE LIGHT FIXTURE SCHEDULE TYPE 'C' FOR DETAILS. LIGHTING TO BE WIRED BACK TO MASTER LIGHT SWITCH IN WORK ROOM 109 USING CIRCUIT OF REMOVED LIGHTING.
- 11 EXISTING WIFI ROUTER REINSTALLED IN NEW DRYWALL BULKHEAD AS REQUIRED.
- 12 NEW LIGHT SWITCH FOR ELEVATOR WALL LIGHTING TYPE 'D'. CONFIRM LOCATION ON SITE. LIGHTING TO BE CONTROLLED SEPARATELY FROM MASTER LIGHT SWITCH.
- 13 NEW SUSPENDED LIGHT FIXTURE IN VESTIBULE M04. SEE LIGHT FIXTURE SCHEDULE TYPE 'B' FOR DETAILS. LIGHTING TO BE WIRED BACK TO MASTER LIGHT SWITCH IN WORK ROOM 109.
- 14 NEW WALL MOUNTED LIGHT SWITCH IN VESTIBULE M04.
- 15 NEW RECESSED FLUORESCENT LIGHT FIXTURE IN LOBBY M05. SEE LIGHT FIXTURE SCHEDULE TYPE 'C' FOR DETAILS. LIGHTING TO BE WIRED BACK TO MASTER LIGHT SWITCH IN WORK ROOM 109.
- 16 SUPPLY & INSTALL NEW AUTOMATIC DOOR OPENER (NORTON OPERATOR & ACUVISION SENSOR-SEE ARCH. DWG. A8, DOOR SCHEDULE) FOR BOTH SIDES OF SWING DOOR. SUPPLY & INSTALL ALL CONCEALED WIRING TO OPERATOR ON A SEPARATE CIRCUIT BREAKER ROUTED INTO HEADER, INCLUDING INSTALLING ALL NECESSARY POWER & LOW VOLTAGE WIRING FOR PROPER OPERATION OF ASSOCIATED SECURITY SYSTEMS. PROVIDE 120VAC, 60 CYCLE, SINGLE-PHASE, 15 AMP SERVICE (ALL WIRING SHALL BE CONCEALED) ON DEDICATED 20 AMP CIRCUIT BREAKER ROUTED TO HEADER.
- 17 NEW VARIABLE RANGE HEAT DETECTOR IN CONTROL CLOSET B20. CONNECT TO EXISTING FIRE ALARM SYSTEM.
- 18 NEW SMOKE DETECTOR AT TOP OF ELEVATOR SHAFT AND OUTSIDE ELEVATOR DOOR. CONNECT TO NEW FIRE ALARM SYSTEM ON SEPARATE ZONE AS PER MANITOBA BUILDING CODE. PROVIDE ISOLATOR MODULES WHEN PASSING A FIRE SEPARATION. SEE E2 FOR DETAILS.
- 19 PROVIDE WIRING FROM DOOR OPERATOR TO DOOR PUSHBUTTON.
- 20 PROVIDE AND INSTALL NEW REMOTE FIRE ALARM ANNUNCIATOR AND CONNECT TO NEW FIRE ALARM PANEL.
- 21 REMOVE AND REPLACE EXISTING FIRE ALARM PANEL WITH NEW FIRE ALARM PANEL WITH OUTPUTS FOR ELEVATOR. PANEL POWERED FROM FUSED CONNECTION TO PANEL MDP.
- 22 PROVIDE A ROOF MOUNTED CONVENIENCE RECEPTACLE TO SERVICE ROOFTOP EQUIPMENT.
- 23 PROVIDE AND INSTALL EMERGENCY LIGHTING c/w BATTERY UNIT AND REMOTE LIGHTING HEADS

NOTES:

ALSO SEE ARCHITECTURAL, ROOF & ELECTRICAL DWGS.

THESE DRAWINGS SHALL NOT BE SCALED.

THE CONTRACTOR SHALL VISIT THE SITE AND SATISFY ONESELF ALL DIMENSIONS, DATUM, AND DETAILED INFORMATION SHOWN ARE CORRECT.

THE CONTRACTOR IS TO REVIEW AND COORDINATE ALL ARCHITECTURAL, STRUCTURAL, MECHANICAL, & ELECTRICAL DRAWINGS FOR ADDITIONAL OPENINGS THROUGH ROOFS, FLOORS, WALLS, AND CEILINGS FOR DUCTWORK, PIPE & ELECTRICAL RISERS AND ALL OPENINGS NOT SHOWN ON DRAWINGS.

ALL NEW & EXISTING OPENINGS THROUGH FIRE ASSEMBLIES ARE TO BE FIRE STOPPED AND SEALED WITH U.L.C. APPROVED FIRE STOPPING TO MAINTAIN THE INTEGRITY OF THE FIRE SEPARATION, AND PROVIDE A SMOKE-TIGHT BARRIER.

ALL PRODUCTS AND MATERIALS TO BE USED AND INSTALLED SHALL CONFORM WITH MANUFACTURERS SPECIFICATIONS & APPLICABLE CODES.

THE CONTRACTOR SHALL BE RESPONSIBLE TO PATCH AND MAKE GOOD ALL EXISTING CONSTRUCTION AFFECTED BY THE REMOVAL OF ALL ITEMS FORMING THE PART OF THE RENOVATION WORK.

SUPPLY & INSTALL ELECTRICAL WORK AS SHOWN ON PLAN & THE FOLLOWING:

REMOVE & REROUTE ALL ELECTRICAL ITEMS TO ACCOMMODATE THE RENOVATION WORK & ELEVATOR INSTALLATION.

COVER PLATES FOR SWITCHES, RECEPTACLES, AND OTHERS SHALL BE STAINLESS STEEL.

PROVIDE TYPED DIRECTORY AT PANELS INDICATING ACCURATELY THE LOADS CORRESPONDING TO CIRCUIT NUMBERS.

ALL NEW POWER OUTLET RECEPTACLES SHALL HAVE PRINTED LABELS AT THE COVER PLATE INDICATING PANEL AND CIRCUIT NUMBER.

ALL WIRING SHALL BE COPPER, MIN. #12 AWG IF RUN EXPOSED, WIRING SHALL BE IN EMT IF RUN CONCEALED, WIRING SHALL BE AC90 X-LINK 6X CABLE.

SURFACE WIRING IN FINISHED AREA SHALL RUN NEATLY IN WIREMOLD NON-METALLIC RACEWAY SYSTEM 8800 BASE & COVER, IVORY FINISH WITH #247 BOX FOR SWITCHES & RECEPT. AND #2485 BOX FOR MTS OUTLETS.

PROVIDE ALL NECESSARY POWER HOOKUPS, DISCONNECTS, BREAKERS ETC., AS REQUIRED TO NEW ELEVATOR. VERIFY ALL DETAILS WITH ELEVATOR SUPPLIER.

INSTALLATION OF EQUIPMENT MUST CONFORM TO THE I.C.C. STANDARDS OF THE INTERNATIONAL MECHANICAL CODE, THE NATIONAL BUILDING CODE, INSTALLATION OF AIR CONDITIONING AND VENTILATING SYSTEMS STANDARD, NFPA 90A, ASHRAE, CSA & LOCAL BUILDING, PLUMBING & WASTE WATER CODES. ALL APPLIANCES MUST BE ELECTRICALLY GROUNDED IN ACCORDANCE WITH LOCAL CODES & THE LATEST CANADIAN ELECTRICAL CODE.

AT THE COMPLETION OF THE PROJECT THE CONTRACTOR SHALL PROVIDE AN ELECTRICAL INSPECTION CERTIFICATE AND ENSURE ALL SYSTEMS ARE FUNCTIONING PROPERLY.

0	ISSUED FOR CONSTRUCTION	AP	AUG 15 2014
No.	REVISION/DESCRIPTION	BY	DATE

PAWLKIEWICZ ENGINEERS
REGISTERED PROFESSIONAL ENGINEER

JAW
CHECKED
DESIGNED
APPROVED

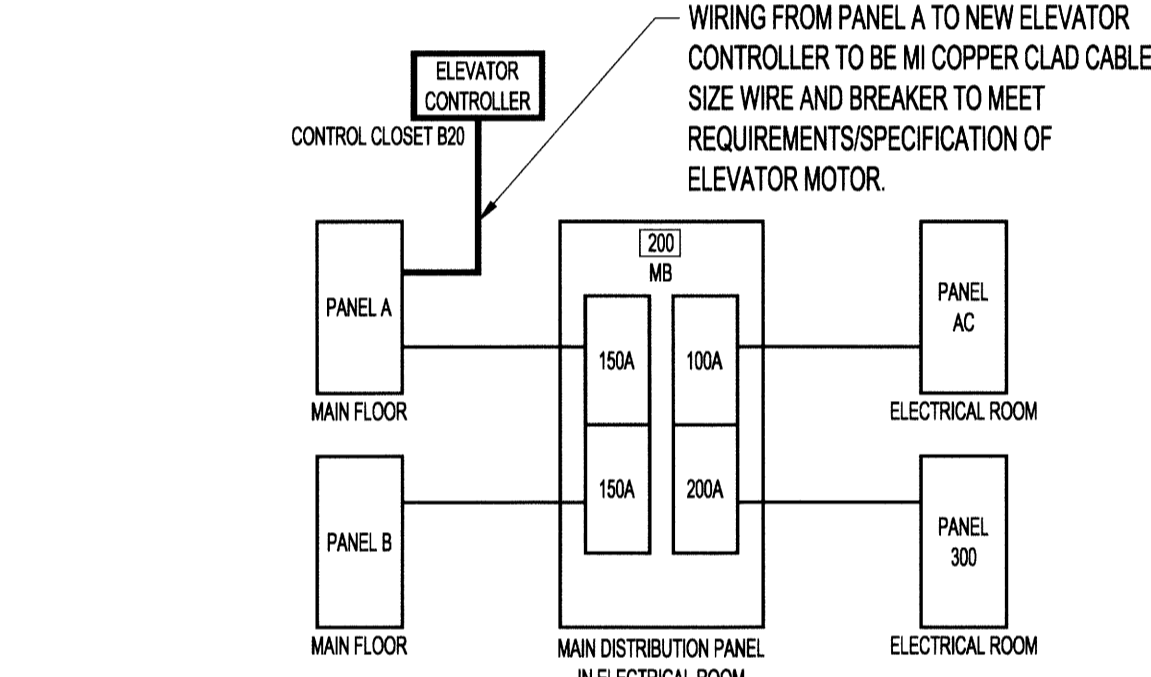
DATE 2014.07.16
USER APPROVAL

THE CITY OF WINNIPEG
PLANNING, PROPERTY AND
DEVELOPMENT DEPARTMENT
MUNICIPAL ACCOMMODATIONS DIVISION
3-65 GARRY STREET, R3C 4K4

PROJECT
ST. VITAL LIBRARY
NEW ELEVATOR INSTALLATION

6 FERMOR AVENUE
SHEET TITLE
PARTIAL BASEMENT, MAIN &
MEZZANINE FLOOR PLANS
ELECTRICAL DEMOLITION & RENOVATION

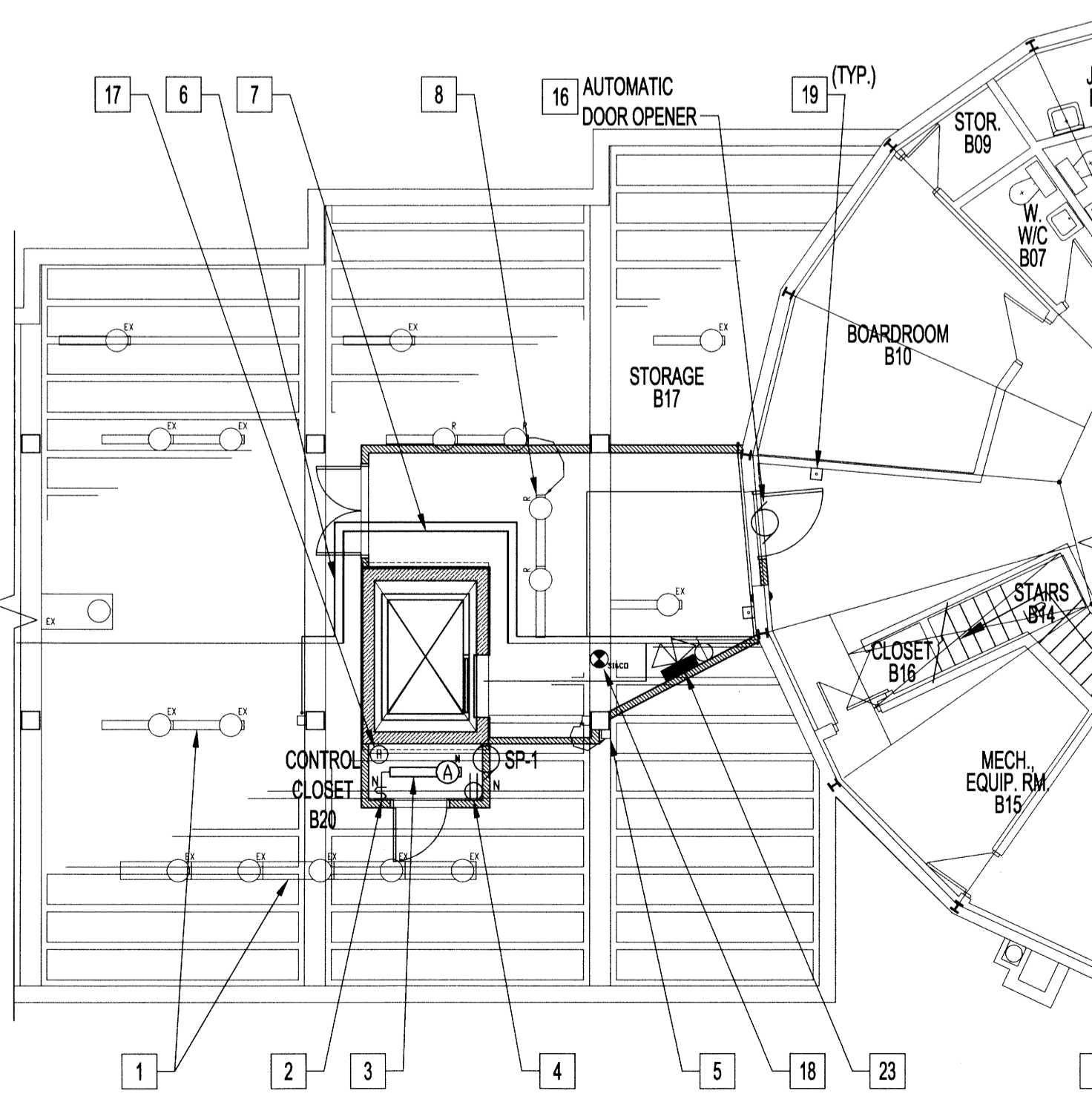
SCALE AS SHOWN PROJECT No: 2013-154 SHEET No: E1



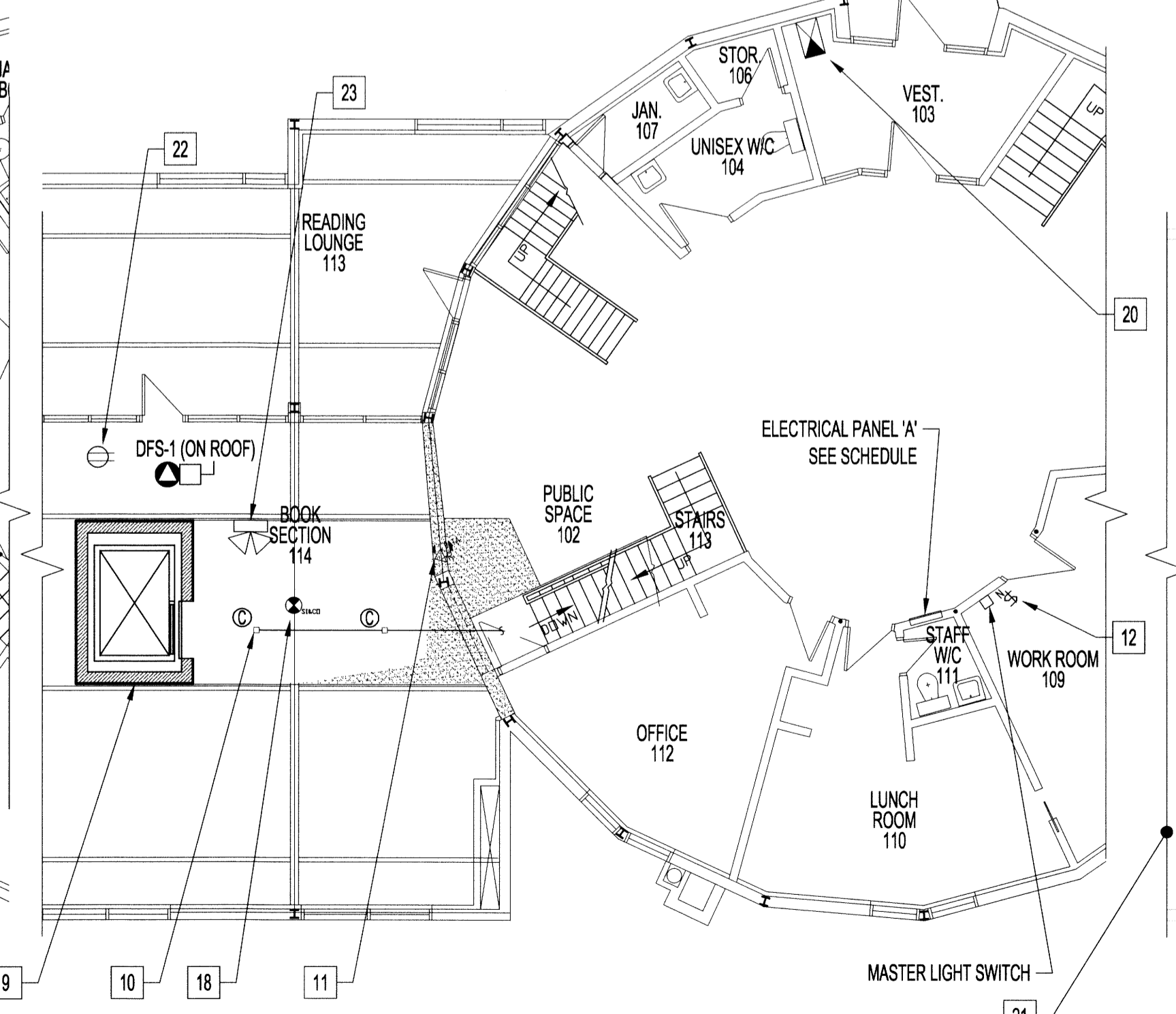
3 ELECTRICAL PANEL LAYOUT
E1 E1 NOT TO SCALE

PANEL 'A' (MAIN FLOOR)

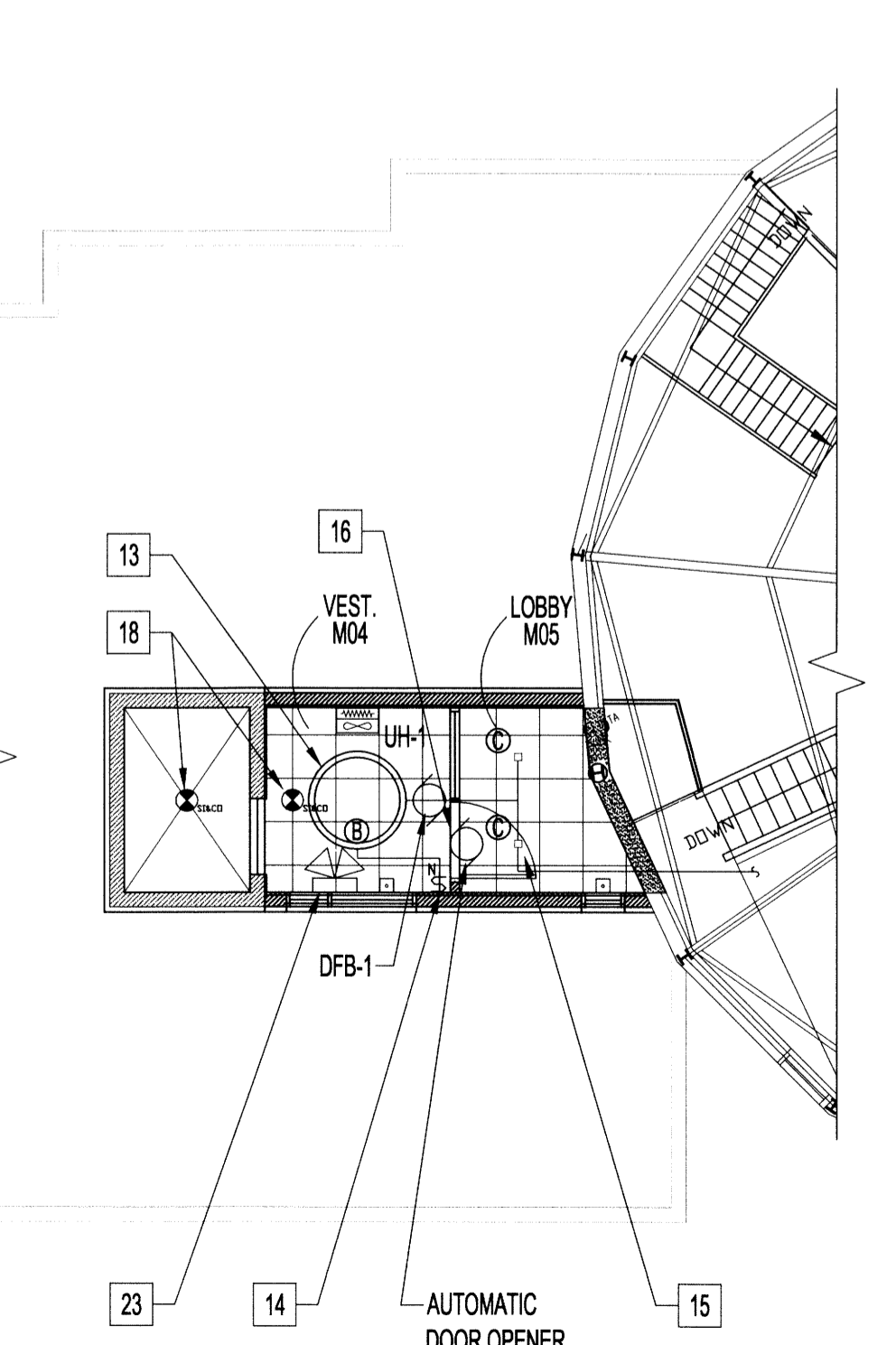
DEMAND LOAD	CIRCUIT LOAD	CIRCUIT DESCRIPTION	CIRCUIT NO.	15A @ 110° TANDEM BREAKERS UNLESS OTHERWISE NOTED	CIRCUIT DESCRIPTION	DEMAND LOAD	CONDUCTORS	RECESSED
	1	ADULT BOOK SECTION	1		ADULT BOOK SECTION			
	3	ADULT BOOK SECTION	3		ADULT BOOK SECTION			
	5	PUBLIC SPACE	5		MEZZANINE FLOOR PLUG			
	7	PUBLIC SPACE	7		ADULT BOOK SECTION			
	9	PUBLIC SPACE	9		JUNIOR BOOK SECTION			
	11	PUBLIC SPACE END	11		JUNIOR BOOK SECTION			
	13	MEZ. JUNIOR BOOK SECT. -CTRE	13		PUBLIC SPACE END			
	15	MEZ. JUNIOR BOOK SECT. -CTRE	15		DM55 DOOR OPERATOR			
	17	CHILD BOOK SECTION	17		OPAC PLUG			
	19	COUNTER PLUG	19		RED - MODERN 2 GANG			
	21	COUNTER PLUG	21		ELEVATOR			
	23	KITCHEN	23		ELEVATOR			
	25	OUTSIDE WALL	25	15A	DFS-1			
	27	UR-1	27		DFS-1			
	29	UR-1	29		MEZZANINE ELEVATOR LIGHTING			



4 BASEMENT PLAN - ELECTRICAL RENOVATION
E1 E1 SCALE 1/8" = 1'-0"



5 MAIN FLOOR PLAN - ELECTRICAL RENOVATION
E1 E1 SCALE 1/8" = 1'-0"



6 MEZZANINE FLOOR PLAN - ELECTRICAL RENOVATION
E1 E1 SCALE 1/8" = 1'-0"