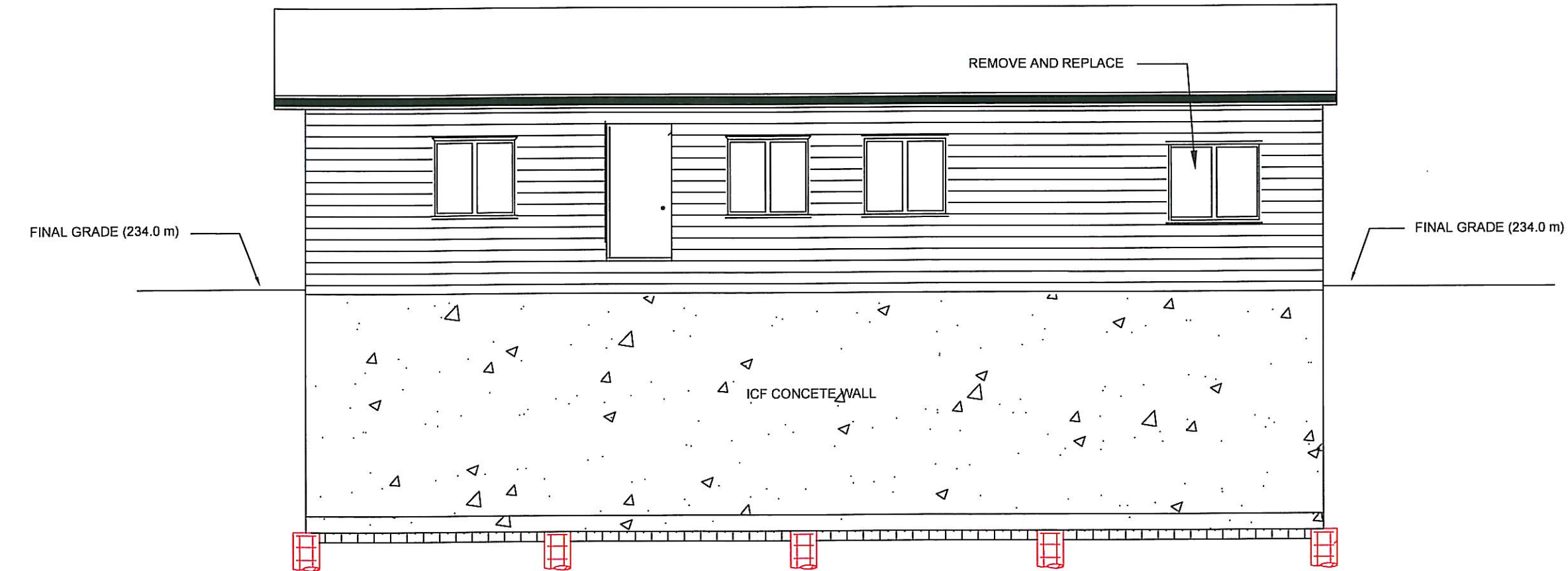
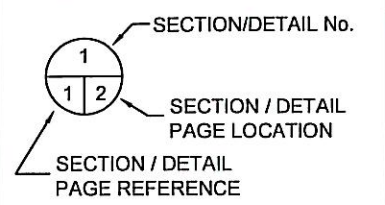


FOUNDATION - EAST VIEW



FOUNDATION - WEST VIEW

LEGEND



NOTES

W1 - ROUGH OPENING = 0.91 m x 1.83 m
W2 - ROUGH OPENING = 0.90 m x 1.02 m
DOOR(1) - ROUGH OPENING (1.85 m x 2.15 m)
WINDOWS (5) = 3.39 m x 3.89 m (ROUGH OPENING TO BE CONFIRMED BY OWNER)

NO.	DATE	ISSUE / REVISION
0	Mar.31.14	Permit/Construction

ENG-TECH CONSULTING LIMITED
6 - 854 Marion Street
Winnipeg, MB R2J 0K4
Phone: (204) 233-1694
Fax: (204) 235-1579



PEGM
Certificate of Authorization
ENG-TECH Consulting Limited
No.2475 Expiry: April 30, 2014

CLIENT: CITY OF WINNIPEG

PROJECT: FLOOD PROTECTION DESIGN - 70 MACBELL ROAD, WINNIPEG, MANITOBA

DWG DESCRIPTION: PROFILE VIEWS - EAST AND WEST

SCALE: 1:75

DRAWN BY: TDR DATE: MARCH 2014

FILE No.: 11-217-06 CLIENT DWG/FIG No.:

ENG-TECH DWG/FIG No.: 10 REV.: 0