

CONSTRUCTION SCOPE OF WORK

- CONCRETE PAVEMENT RENEWALS (SLAB, JOINT, ISOLATIONS)
- INSTALL BARRIER CURB
- PLACEMENT OF ASPHALT OVERLAY
- SIDEWALK RENEWAL

REFERENCE NOTES:

- ALL PAVEMENT DIMENSIONS ARE TO BACK OF CURB.
- LEGAL PLAN AND UNDERGROUND INFORMATION FROM CITY OF WINNIPEG LBIS. CONTRACTOR TO VERIFY ALL UNDERGROUNDS IN THE FIELD.
- CONTROL LINE IS CENTRELINE OF RIGHT-OF-WAY.
- ALL SIDEWALK, CURB, AND CONCRETE REPAIRS TO BE MARKED OUT IN FIELD BY CONTRACT ADMINISTRATOR.
- ALL ADJUSTMENTS FOR CATCH BASINS, MANHOLES, VALVES & INLETS TO BE MARKED IN FIELD BY CONTRACT ADMINISTRATOR.
- PAVEMENT REPAIRS SHOWN ARE ONLY A REPRESENTATIVE APPROXIMATION OF THE TENDERED QUANTITIES.
- CONTRACTOR TO COMPLETE RECONSTRUCTION OF STREET LIGHTING (BASES, WIRING & LAMP STANDARDS).
- CONTRACTOR TO TAKE PRECAUTIONARY STEPS TO PROTECT EXISTING TREES FROM CONSTRUCTION ACTIVITIES.

CONSTRUCTION NOTES:

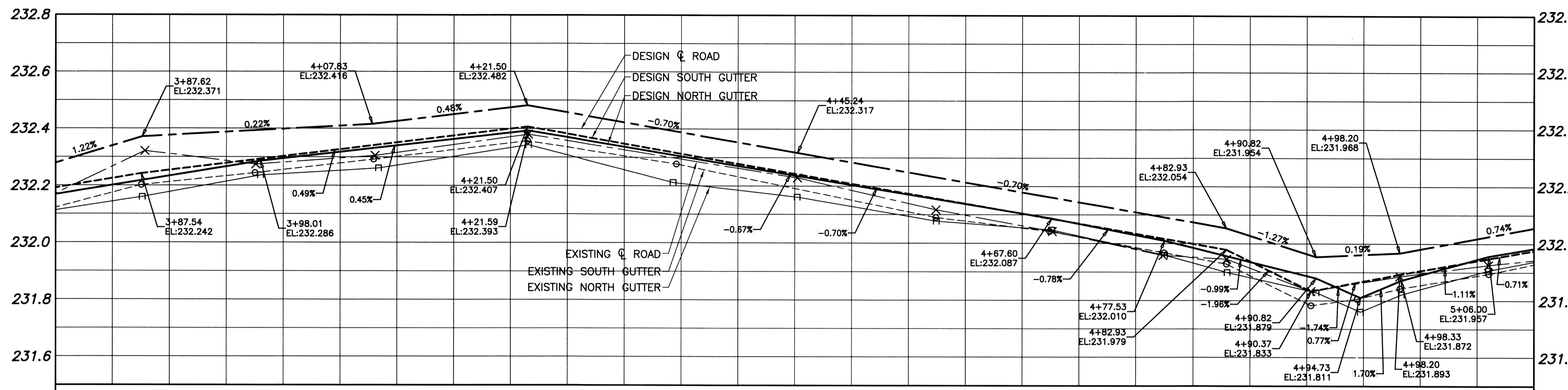
- PLACE NEW ASPHALTIC PAVEMENT OVERLAY (TYPE 1A, 100mm AVERAGE THICKNESS).
- REMOVE EXISTING CONCRETE PAVEMENT AND CONSTRUCT NEW REINFORCED CONCRETE PAVEMENT (150mm) C/W ASPHALTIC PAVEMENT OVERLAY (100mm AVERAGE THICKNESS).
- REMOVE EXISTING LIP CURB AND INSTALL NEW BARRIER CURB (100mm REVEAL HT. DOWELED).
- ADJUST EXISTING MANHOLE/CATCHBASIN.
- CONSTRUCT NEW BARRIER CURB AND GUTTER (SD-200).
- PLANE EXISTING LIP CURB AND REPLACE WITH NEW LIP CURB (75mm REVEAL, DOWELED, SD-202C).
- CONSTRUCT NEW MODIFIED BARRIER CURB (180mm, SEPARATE).
- CONSTRUCT NEW CURB RAMP (SD-229A).
- RENEW EXISTING CONCRETE SIDEWALK (SD-228A).
- ADJUST WATER VALVE.
- REMOVE EXISTING INLET.
- INSTALL NEW CURB & GUTTER INLET C/W CATCH PIT (SD-023) AND CONNECT TO EXISTING LEAD.
- INSTALL NEW CURB & GUTTER INLET C/W 1200 CATCH BASIN (SD-024) AND CONNECT TO EXISTING MANHOLE.

CONTROL LINE COORDINATES		
POINT/STATION	NORTHING	EASTING
POT 0+81.14	5534943.159	628834.312
POC 0+86.72	5534947.446	628837.898
POT 1+82.69	5535036.088	628868.839
POC 2+37.90	5535091.279	628867.465
POT 2+55.99	5535103.063	628878.707
POC 5+36.76	5535109.265	629159.412
POT 6+00.30	5535096.757	629221.172
POT 6+39.75	5535080.609	629257.163

WARNING
 NOTIFY THE GAS COMPANY OF THE PROPOSED LOCATION OF EXCAVATION. TAKE PRECAUTION TO AVOID DAMAGE TO GAS COMPANY INSTALLATIONS. SEE PROVINCIAL REGULATION 210/72 FOR DETAILS.

METRIC
 WHOLE NUMBERS INDICATE MILLIMETRES
 DECIMALIZED NUMBERS INDICATE METRES

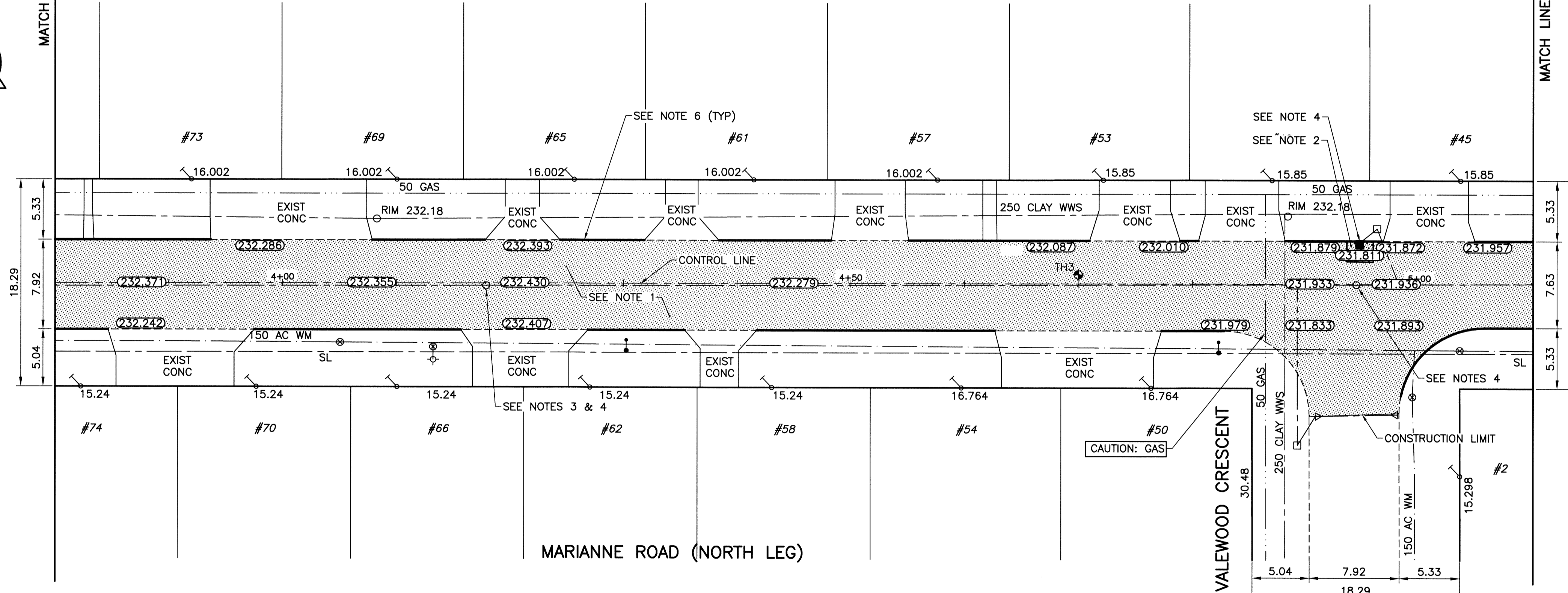
PROPERTY LIMITS DELINEATION
 DELINEATION OF PROPERTY LIMITS AS SHOWN ON THIS DWG DOES NOT REPRESENT A "LEGAL SURVEY". KGS GROUP MAKES NO REPRESENTATION OR WARRANTY AS TO THE ACCURACY OF PROPERTY LIMITS DELINEATED ON THIS DWG, NOR ON THE DIMENSIONAL ACCURACY OF DWG FEATURES RELATIVE TO THOSE PROPERTY LIMITS.



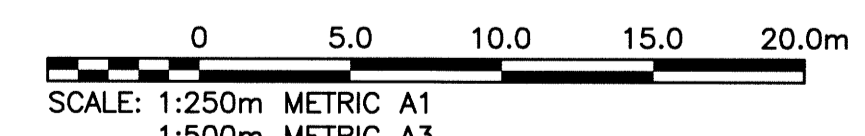
PROFILE
 SCALE H=1:250
 V=1:10

MATCH LINE STA 3+80

MATCH LINE STA 5+10



PLAN
 SCALE: 1:250



P:\Projects\2013\13-0107-030\DWG\Man\13-0107-030_CALL.dwg - Tab: 003 Plotted By: dderoché 09/06/2014 [Wed 8:57am]

EXISTING	LEGEND-PLAN	PROPOSED	EXISTING	LEGEND-PLAN	PROPOSED	EXISTING	LEGEND-PLAN	PROPOSED
300 LBS	LAND DRAINAGE SEWER	300 LBS	---	GUY WIRE	---	CONCRETE	---	---
250 WWS	WASTE WATER SEWER	250 WWS	---	LIGHT STANDARD	---	ASPHALT	---	---
---	GAS	---	---	POLES	---	GRAVEL	---	---
---	HYDRO	---	---	PROPERTY LINE	---	SIDEWALK	---	---
---	M.T.S.	---	---	BACK OF CURB	---	PLANING - REMOVAL	---	---
150 WM	WATERMAIN	150 WM	---	RAMP CURB	---			
+	HYDRANT	+	231.334	ELEVATION	(32.231)			
+	VALVE	+	+	SURVEY BAR	+			
o	MANHOLE	o	o	GEODETC BENCHMARK	o			
□	CATCH BASIN	□	□	FENCE	□			
▽	CURB INLET	▽	▽	TEST HOLE	▽			
			+	TREE	+			

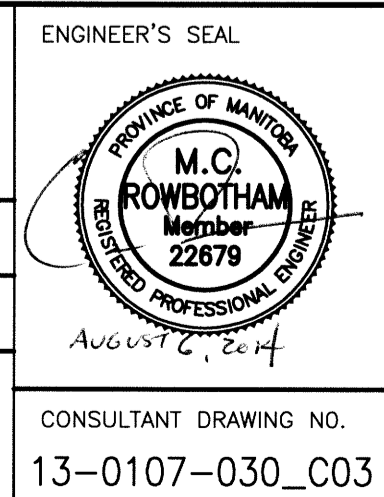
LOCATION APPROVED UNDERGROUND STRUCTURES

SUPV. U/G STRUCTURES COMMITTEE DATE

NOTE:
 LOCATION OF UNDERGROUND STRUCTURES AS SHOWN ARE BASED ON THE BEST INFORMATION AVAILABLE BUT NO GUARANTEE IS GIVEN THAT ALL EXISTING UTILITIES ARE SHOWN OR THAT THE GIVEN LOCATIONS ARE EXACT. CONFIRMATION OF EXISTENCE AND EXACT LOCATION OF ALL SERVICES MUST BE OBTAINED FROM THE INDIVIDUAL UTILITIES BEFORE PROCEEDING WITH CONSTRUCTION.

NO.	REVISIONS	DATE	BY
0	ISSUED FOR TENDER	14/08/06	CR

DESIGNED BY	JB	CHECKED BY	CR
DRAWN BY	GEL	APPROVED BY	PRK
HOR. SCALE:	1:250	RELEASED FOR CONSTRUCTION:	
VERTICAL:		DATE	14/07/20



THE CITY OF WINNIPEG
 PUBLIC WORKS DEPARTMENT
 TRANSPORTATION ENGINEERING DIVISION

PROJECT TITLE: **2014 LOCAL STREET RENEWAL PROGRAM**

SHEET OF: **03** OF **19**

COMPUTER FILE NAME: **13-0107-030_CALL**

DRAWING NUMBER: **C03**

CONSULTANT DRAWING NO.: **13-0107-030_C03**

LOCATION: **MARIANNE ROAD**
INKSTER GARDEN DR TO GARTON AVE
STA 3+80 TO STA 5+10