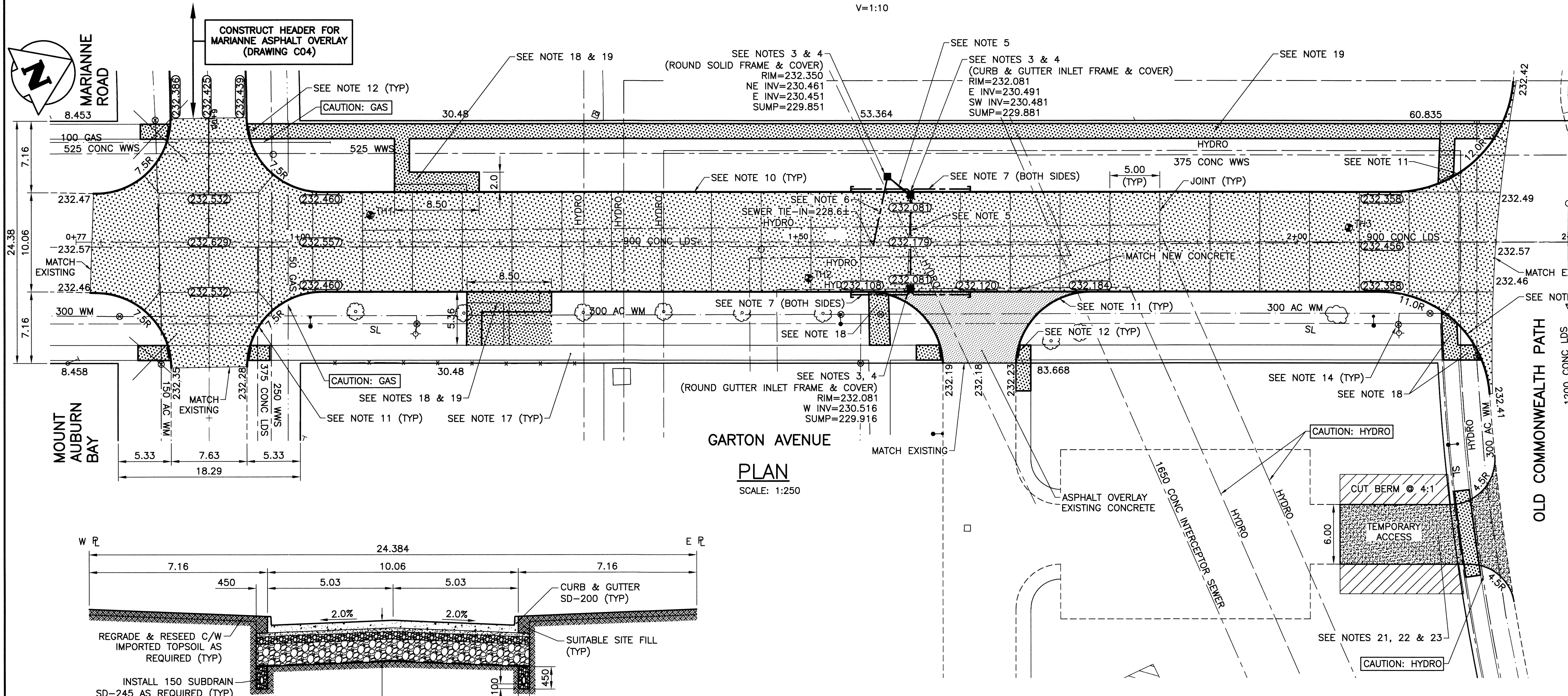
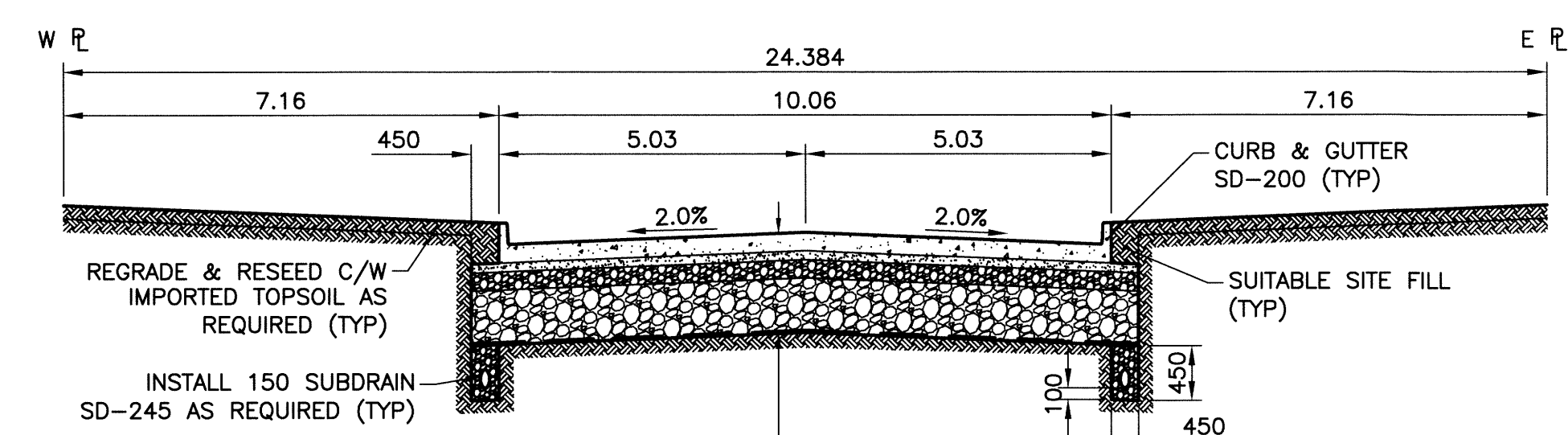


**PROFILE**  
SCALE H=1:250  
V=1:10



**PLAN**  
SCALE: 1:250



**PAVEMENT SECTION**  
SCALE HOR 1:100  
VER 1:50

- REFERENCE NOTES:**
- ALL PAVEMENT DIMENSIONS ARE TO BACK OF CURB.
  - STATION CHAINAGE IS BASED ON CENTRELINE OF GARTON AVENUE.
  - LEGAL PLAN AND UNDERGROUND INFORMATION BASED ON CITY OF WINNIPEG LBIS. CONTRACTOR TO VERIFY ALL UNDERGROUNDS IN THE FIELD.
  - ALL PERMITS AND CLEARANCES REQUIRED PRIOR TO EXCAVATION WORKS.
  - LOCATION OF EXISTING SERVICES TO BE CONFIRMED IN THE FIELD BY THE CONTRACTOR.
  - LIMITS OF SIDEWALK RENEWAL AND BOULEVARD GRADING TO BE CONFIRMED IN THE FIELD BY THE CONTRACT ADMINISTRATOR.

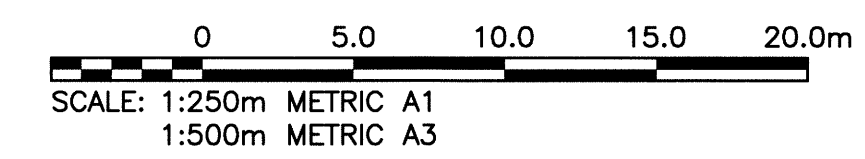
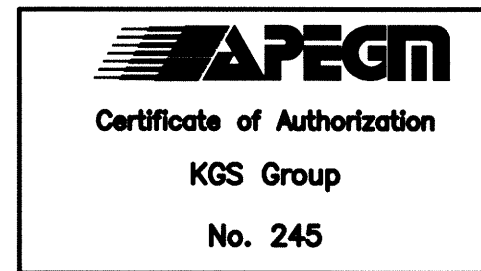
- CONSTRUCTION NOTES:**
- REMOVE EXISTING CURB AND CONCRETE PAVEMENT.
  - EXCAVATE EXISTING PAVEMENT BASE MATERIALS AND SOIL TO DESIGN SUBGRADE DEPTH.
  - REMOVE EXISTING CATCH BASIN AND INLET (WHERE NOTED).
  - INSTALL NEW CATCH BASIN (WHERE NOTED).
  - REPLACE CATCH BASIN LEAD (WHERE NOTED).
  - REPLACE CATCH BASIN SERVICE LEAD AND CONNECTION TO SEWER (WHERE NOTED).
  - INSTALL 6.0m SUBDRAIN (WHERE NOTED). CONNECT TO CATCH BASIN AND CAP ENDS.
  - SUBGRADE COMPACTION TO BE CONFIRMED IN THE FIELD BY CONTRACT ADMINISTRATOR.
  - CONSTRUCT NEW SUB-BASE, BASE AND REINFORCED CONCRETE PAVEMENT.
  - CONSTRUCT NEW BARRIER CURB (WHERE NOTED, SD-200, INTEGRAL).
  - CONSTRUCT NEW MODIFIED BARRIER CURB (WHERE NOTED, SD-203B).
  - CONSTRUCT NEW CURB RAMP (WHERE NOTED, SD-229).
  - REPLACE EXISTING MANHOLE FRAME & COVER WHERE DIRECTED IN THE FIELD BY THE CONTRACT ADMINISTRATOR.
  - ADJUST VALVES, CURB STOPS, AND MANHOLE AND CATCH BASIN RIMS TO NEW GRADES.
  - ISOLATE MANHOLES AND CATCH BASINS IN ACCORDANCE (SD-220).
  - ISOLATE ALL HYDRANTS, POLES, BASES AND PILES WITHIN SIDEWALK (SD-228C).
  - RENEW EXISTING CONCRETE SIDEWALK (SD-228A).
  - REMOVE EXISTING CONCRETE SIDEWALK.
  - CONSTRUCT NEW CONCRETE SIDEWALK AND BUS STOP PLATFORMS.
  - DO NOT DAMAGE TREES WITHIN THE CONSTRUCTION LIMITS.
  - REMOVE CURB AND SHRUBS. EXCAVATE 375mm.
  - PLACE 300mm - 50mm SUBBASE AND 75mm BASE.
  - FOLLOWING CONSTRUCTION COMPLETION OF GARTON AVENUE, RESTORE CURB, SIDEWALK, SHRUBS, TOPSOIL & SOD TO ORIGINAL.

**WARNING**  
NOTIFY THE GAS COMPANY OF THE PROPOSED LOCATION OF EXCAVATION. TAKE PRECAUTION TO AVOID DAMAGE TO GAS COMPANY INSTALLATIONS. SEE PROVINCIAL REGULATION 210/72 FOR DETAILS.

**METRIC**  
WHOLE NUMBERS INDICATE MILLIMETRES  
DECIMALIZED NUMBERS INDICATE METRES

CONTROL LINE COORDINATES		
POINT/STATION	NORTHING	EASTING
POT 0+77.50	5535079.617	629226.690
POT 2+27.59	5535216.575	629288.092

**PROPERTY LIMITS DELINEATION**  
DELINEATION OF PROPERTY LIMITS AS SHOWN ON THIS DWG DOES NOT REPRESENT A "LEGAL SURVEY". KGS GROUP MAKES NO REPRESENTATION OR WARRANTY AS TO THE ACCURACY OF PROPERTY LIMITS DELINEATED ON THIS DWG, NOR ON THE DIMENSIONAL ACCURACY OF DWG FEATURES RELATIVE TO THOSE PROPERTY LIMITS.



EXISTING	LEGEND-PLAN	PROPOSED	EXISTING	LEGEND-PROFILE	PROPOSED	EXISTING	LEGEND-PROFILE	PROPOSED
300 LBS	LAND DRAINAGE SEWER	300 LBS	DETECTABLE WARNING TILE					
250 WWS	WASTE WATER SEWER	250 WWS	TREE					
	GAS		TEST HOLE					
	HYDRO		GUY WIRE					
	M.T.S.		LIGHT STANDARD					
150 WM	WATERMAIN	150 WM	BACK OF CURB					
	HYDRANT		CONCRETE					
	VALVE		ASPHALT					
	MANHOLE		SIDEWALK					
	CATCH BASIN		GRAVEL					
	CURB INLET		PROPERTY LINE					
	POLES		ELEVATION					
	T-MTS H-HYDRO		231.334					

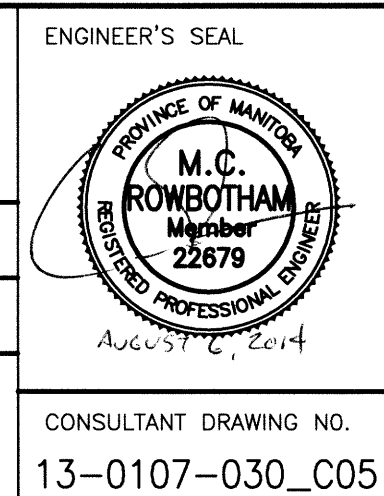
**LOCATION APPROVED UNDERGROUND STRUCTURES**

SUPV. U/G STRUCTURES COMMITTEE DATE

**NOTE:**  
LOCATION OF UNDERGROUND STRUCTURES AS SHOWN ARE BASED ON THE BEST INFORMATION AVAILABLE BUT NO GUARANTEE IS GIVEN THAT ALL EXISTING UTILITIES ARE SHOWN OR THAT THE GIVEN LOCATIONS ARE EXACT. CONFIRMATION OF EXISTENCE AND EXACT LOCATION OF ALL SERVICES MUST BE OBTAINED FROM THE INDIVIDUAL UTILITIES BEFORE PROCEEDING WITH CONSTRUCTION.

NO.	REVISIONS	DATE	BY
0	ISSUED FOR TENDER	14/08/06	CR

DESIGNED BY	CHECKED BY
JDF	CR
DRAWN BY	APPROVED BY
GEL	AGH
HOR. SCALE:	RELEASED FOR CONSTRUCTION:
1:250	
VERTICAL:	DATE
-	14/07/20



**THE CITY OF WINNIPEG**  
PUBLIC WORKS DEPARTMENT  
TRANSPORTATION ENGINEERING DIVISION

PROJECT TITLE: **2014 LOCAL STREET RENEWAL PROGRAM**  
SHEET OF: **05** OF **19**

**GARTON AVENUE**  
MARIANNE RD TO OLD COMMONWEALTH PA

CITY DRAWING NUMBER: **C05**

P:\Projects\2013\13-0107-030\Draw\Main\13-0107-030\_CALL.dwg - Tab: C05 Plotted By: ederoche 08/06/2014 [Wed 8:57am] PLOT 1:1 A-1