

**CONSTRUCTION SCOPE OF WORK**

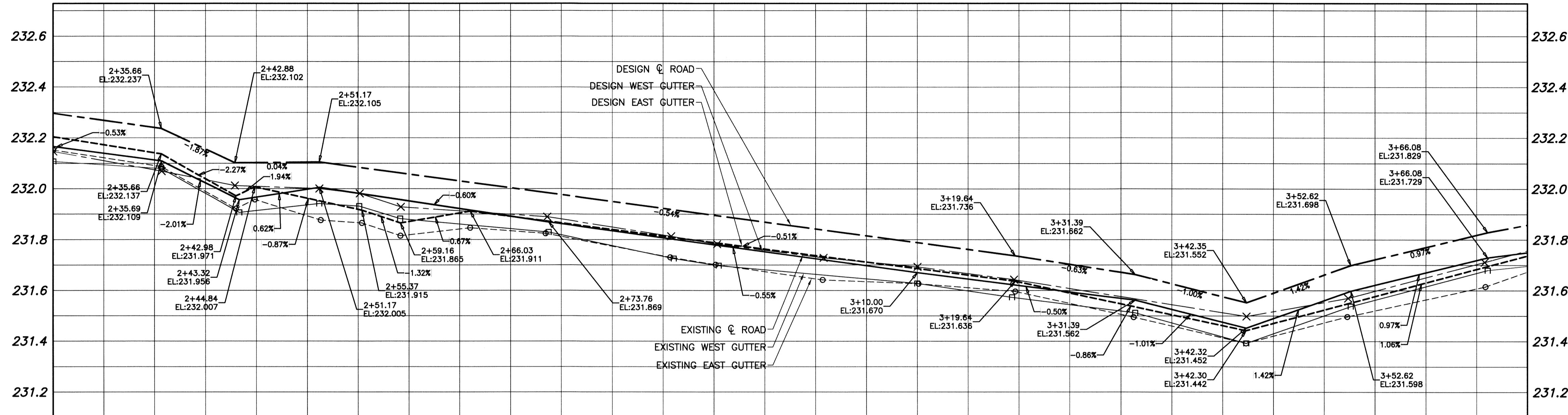
- CONCRETE PAVEMENT RENEWALS (SLAB, JOINT, ISOLATIONS)
- INSTALL BARRIER CURB
- PLACEMENT OF ASPHALT OVERLAY
- SIDEWALK RENEWAL

**REFERENCE NOTES:**

- ALL PAVEMENT DIMENSIONS ARE TO BACK OF CURB.
- LEGAL PLAN AND UNDERGROUND INFORMATION FROM CITY OF WINNIPEG LBIS. CONTRACTOR TO VERIFY ALL UNDERGROUNDS IN THE FIELD.
- CONTROL LINE IS CENTRELINE OF RIGHT-OF-WAY.
- ALL SIDEWALK, CURB, AND CONCRETE REPAIRS TO BE MARKED OUT IN FIELD BY CONTRACT ADMINISTRATOR.
- ALL ADJUSTMENTS FOR CATCH BASINS, MANHOLES, VALVES & INLETS TO BE MARKED IN FIELD BY CONTRACT ADMINISTRATOR.
- PAVEMENT REPAIRS SHOWN ARE ONLY A REPRESENTATIVE APPROXIMATION OF THE TENDERED QUANTITIES.
- CONTRACTOR TO COMPLETE RECONSTRUCTION OF STREET LIGHTING (BASES, WIRING & LAMP STANDARDS).
- CONTRACTOR TO TAKE PRECAUTIONARY STEPS TO PROTECT EXISTING TREES FROM CONSTRUCTION ACTIVITIES.

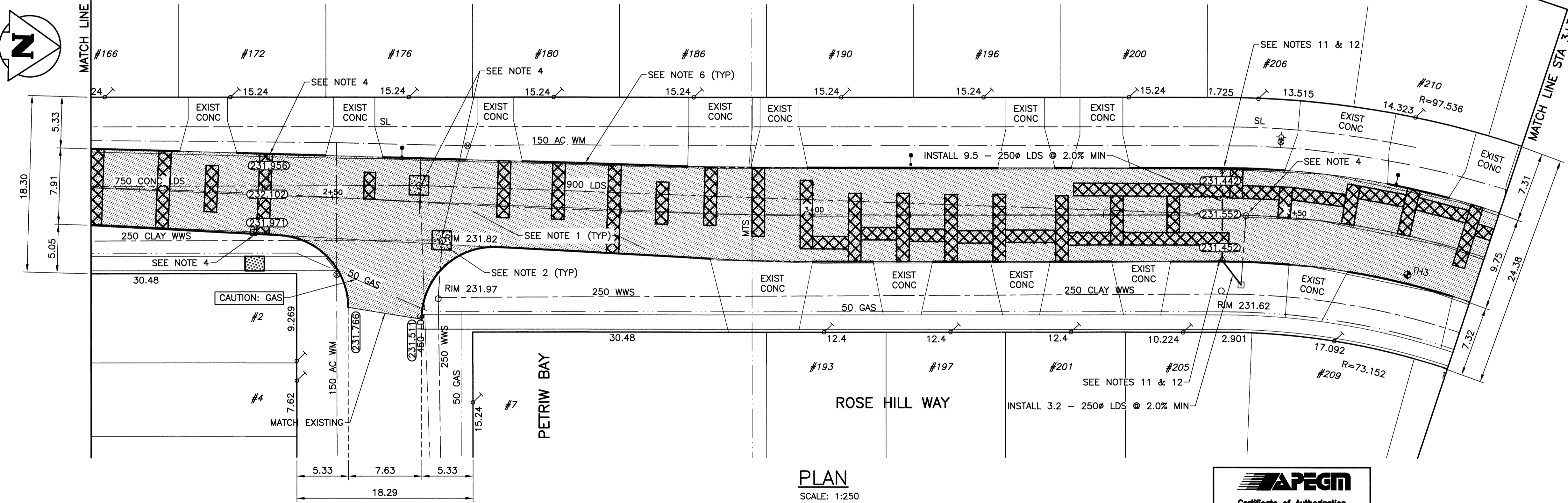
**CONSTRUCTION NOTES:**

- PLACE NEW ASPHALTIC PAVEMENT OVERLAY (TYPE 1A, 80mm AVERAGE THICKNESS).
- REMOVE EXISTING CONCRETE PAVEMENT AND CONSTRUCT NEW REINFORCED CONCRETE PAVEMENT (150mm) C/W ASPHALTIC PAVEMENT OVERLAY (80mm AVERAGE THICKNESS).
- REMOVE EXISTING FRAME AND COVER AND INSTALL NEW.
- ADJUST EXISTING MANHOLE/CATCHBASIN.
- CONSTRUCT NEW BARRIER CURB AND GUTTER (SD-200).
- PLANE EXISTING LIP CURB AND REPLACE WITH NEW LIP CURB (75mm REVEAL, DOWELED, SD-202C).
- CONSTRUCT NEW MODIFIED BARRIER CURB (180mm, SEPARATE).
- CONSTRUCT NEW CURB RAMP (SD-229A).
- RENEW EXISTING CONCRETE SIDEWALK (SD-228A).
- ADJUST WATER VALVE.
- REMOVE EXISTING INLET.
- INSTALL NEW CURB & GUTTER INLET C/W CATCH PIT (SD-023) AND CONNECT TO EXISTING LEAD.
- INSTALL NEW CURB & GUTTER INLET C/W 1200 CATCH BASIN (SD-024) AND CONNECT TO EXISTING MANHOLE.



**PROFILE**

SCALE H=1:250  
V=1:10



**PLAN**

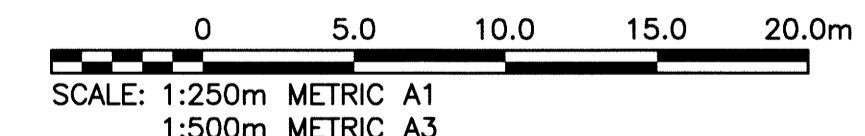
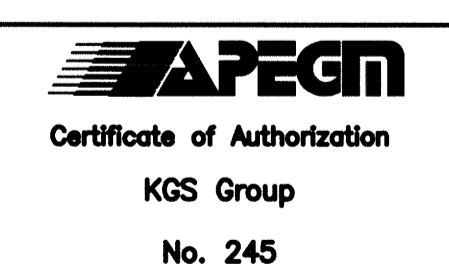
SCALE: 1:250

CONTROL LINE COORDINATES		
POINT/STATION	NORTHING	EASTING
POT 0+80.71	5534233.573	629266.007
POC 2+12.83	5534365.661	629262.996
POC 2+55.31	5534408.131	629263.546
POT 2+97.79	5534450.600	629264.096
POC 3+42.48	5534495.282	629263.075
POT 3+79.36	5534531.197	629270.102
POT 4+08.98	5534558.365	629281.891
POT 4+39.50	5534586.368	629294.030
POC 4+54.93	5534600.522	629300.174
POT 5+30.48	5534674.093	629314.579
POT 6+56.90	5534800.477	629311.699

**WARNING**  
NOTIFY THE GAS COMPANY OF THE PROPOSED LOCATION OF EXCAVATION. TAKE PRECAUTION TO AVOID DAMAGE TO GAS COMPANY INSTALLATIONS. SEE PROVINCIAL REGULATION 210/72 FOR DETAILS.

**METRIC**  
WHOLE NUMBERS INDICATE MILLIMETRES  
DECIMALIZED NUMBERS INDICATE METRES

**PROPERTY LIMITS DELINEATION**  
DELINEATION OF PROPERTY LIMITS AS SHOWN ON THIS DWG DOES NOT REPRESENT A "LEGAL SURVEY". KGS GROUP MAKES NO REPRESENTATION OR WARRANTY AS TO THE ACCURACY OF PROPERTY LIMITS DELINEATED ON THIS DWG, NOR ON THE DIMENSIONAL ACCURACY OF DWG FEATURES RELATIVE TO THOSE PROPERTY LIMITS.



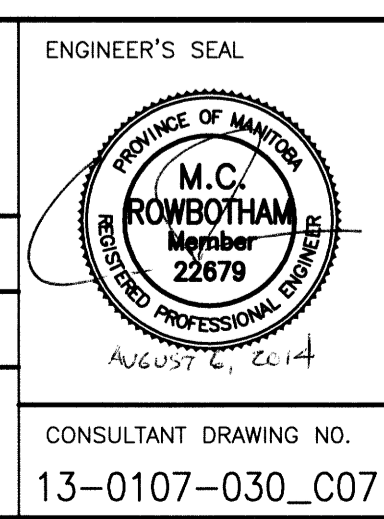
300 LDS	LAND DRAINAGE SEWER	300 LDS	---	GUY WIRE	---	CONCRETE	---
250 WWS	WASTE WATER SEWER	250 WWS	---	LIGHT STANDARD	---	ASPHALT	---
---	GAS	---	---	POLES	---	GRAVEL	---
---	HYDRO	---	---	PROPERTY LINE	---	SIDEWALK	---
---	M.T.S.	---	---	BACK OF CURB	---	PLANING - REMOVAL	---
150 WM	WATERMAIN	150 WM	---	RAMP CURB	---	PARTIAL DEPTH PATCH	---
---	HYDRANT	---	231.334	ELEVATION	(32.231)	---	---
---	VALVE	---	---	SURVEY BAR	---	---	---
---	MANHOLE	---	---	GEODETTIC BENCHMARK	---	---	---
---	CATCH BASIN	---	---	FENCE	---	---	---
---	CURB INLET	---	---	TEST HOLE	---	---	---
---	---	---	---	TREE	---	---	---
EXISTING	LEGEND-PLAN	PROPOSED	EXISTING	LEGEND-PLAN	PROPOSED	EXISTING	LEGEND-PLAN
---	---	---	---	---	---	---	---

**LOCATION APPROVED UNDERGROUND STRUCTURES**

DATE: \_\_\_\_\_

NOTE: LOCATION OF UNDERGROUND STRUCTURES AS SHOWN ARE BASED ON THE BEST INFORMATION AVAILABLE BUT NO GUARANTEE IS GIVEN THAT ALL EXISTING UTILITIES ARE SHOWN OR THAT THE GIVEN LOCATIONS ARE EXACT. CONFIRMATION OF EXISTENCE AND EXACT LOCATION OF ALL SERVICES MUST BE OBTAINED FROM THE INDIVIDUAL UTILITIES BEFORE PROCEEDING WITH CONSTRUCTION.

B.M. 15-034 ELEV. 232.048	SW Cor Intersect Garden Dr & Rose Hill Way, Tab on Top on 0.05m x 2.4m iron pipe, 2.3m N of S.E. of Intersect Garden Dr & 3.2m E of W.L. of Rose Hill Way
DESIGNED BY	JB
CHECKED BY	CR
DRAWN BY	GEL
APPROVED BY	PAK
HOR. SCALE:	1:250
VERTICAL:	---
ISSUED FOR TENDER	14/08/06
RELEASED FOR CONSTRUCTION:	14/07/20
NO. REVISIONS	DATE BY DATE



**THE CITY OF WINNIPEG**  
PUBLIC WORKS DEPARTMENT  
TRANSPORTATION ENGINEERING DIVISION

PROJECT TITLE: **2014 LOCAL STREET RENEWAL PROGRAM**

SHEET OF: **07** OF **19**

COMPUTER FILE NAME: **13-0107-030\_CALL**

DRAWING NUMBER: **C07**

CONTRACTOR: **ROSE HILL WAY  
ROSE HILL PL TO WILDES LN  
STA 2+25 TO STA 3+70**

CONSULTANT DRAWING NO.: **13-0107-030\_C07**

P:\Projects\2013\13-0107-030\DWG\Main\13-0107-030\_CALL.dwg - Tab: C07 Plotted By: dderoché 08/06/2014 [Wed 8:56am] PLOT: 1: A-1