

CONSTRUCTION SCOPE OF WORK

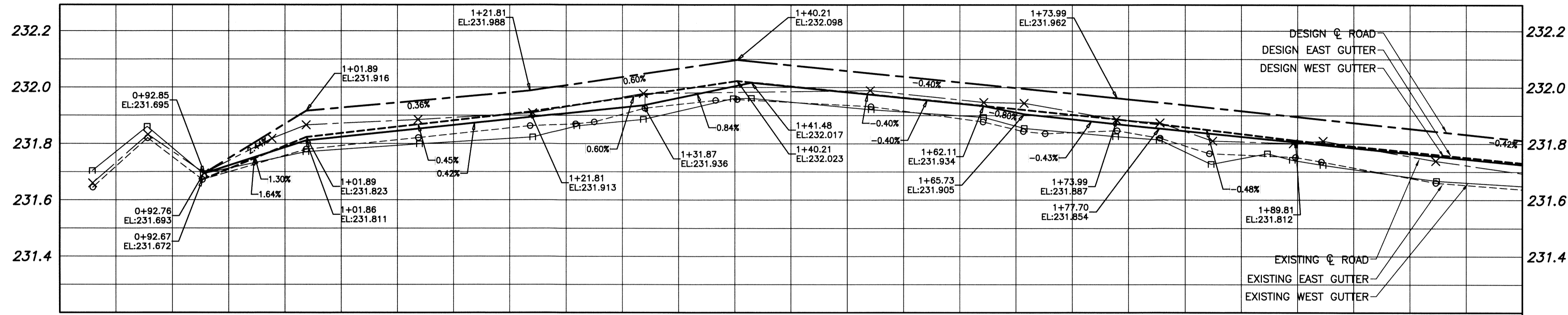
- CONCRETE PAVEMENT RENEWALS (SLAB, JOINT, ISOLATIONS)
- INSTALL BARRIER CURB
- PLACEMENT OF ASPHALT OVERLAY
- SIDEWALK RENEWAL

REFERENCE NOTES:

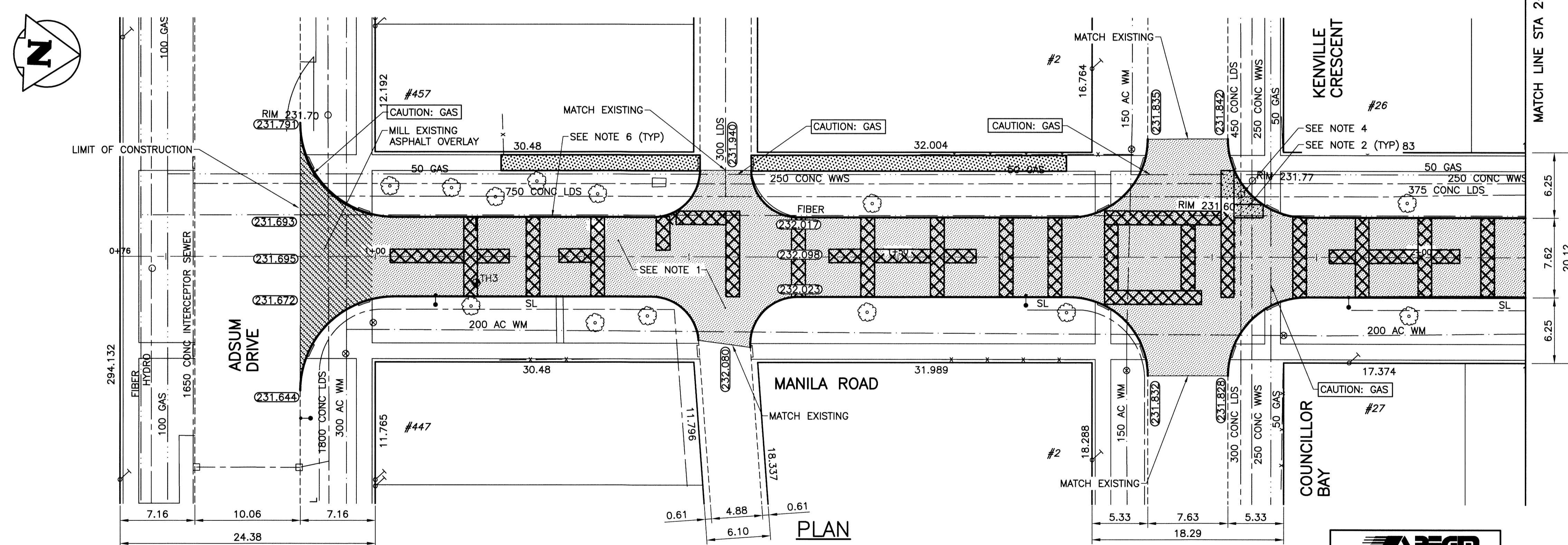
- ALL PAVEMENT DIMENSIONS ARE TO BACK OF CURB.
- LEGAL PLAN AND UNDERGROUND INFORMATION FROM CITY OF WINNIPEG LBIS. CONTRACTOR TO VERIFY ALL UNDERGROUNDS IN THE FIELD.
- CONTROL LINE IS CENTRELINE OF RIGHT-OF-WAY.
- ALL SIDEWALK, CURB, AND CONCRETE REPAIRS TO BE MARKED OUT IN FIELD BY CONTRACT ADMINISTRATOR.
- ALL ADJUSTMENTS FOR CATCH BASINS, MANHOLES, VALVES & INLETS TO BE MARKED IN FIELD BY CONTRACT ADMINISTRATOR.
- PAVEMENT REPAIRS SHOWN ARE ONLY A REPRESENTATIVE APPROXIMATION OF THE TENDERED QUANTITIES.
- CONTRACTOR TO COMPLETE RECONSTRUCTION OF STREET LIGHTING (BASES, WIRING & LAMP STANDARDS).
- CONTRACTOR TO TAKE PRECAUTIONARY STEPS TO PROTECT EXISTING TREES FROM CONSTRUCTION ACTIVITIES.

CONSTRUCTION NOTES:

- PLACE NEW ASPHALTIC PAVEMENT OVERLAY (TYPE 1A, 70mm AVERAGE THICKNESS).
- REMOVE EXISTING CONCRETE PAVEMENT AND CONSTRUCT NEW REINFORCED CONCRETE PAVEMENT (150mm) C/W ASPHALTIC PAVEMENT OVERLAY (70mm AVERAGE THICKNESS).
- REMOVE EXISTING FRAME AND COVER AND INSTALL NEW.
- ADJUST EXISTING MANHOLE/CATCHBASIN.
- CONSTRUCT NEW BARRIER CURB AND GUTTER (SD-200).
- PLANE EXISTING LIP CURB AND REPLACE WITH NEW LIP CURB (75mm REVEAL, DOWELED, SD-202C).
- CONSTRUCT NEW MODIFIED BARRIER CURB (180mm, SEPARATE).
- CONSTRUCT NEW CURB RAMP (SD-229A).
- RENEW EXISTING CONCRETE SIDEWALK (SD-228A).
- ADJUST WATER VALVE.
- REMOVE EXISTING INLET.
- INSTALL NEW CURB & GUTTER INLET C/W CATCH PIT (SD-023) AND CONNECT TO EXISTING LEAD.
- INSTALL NEW CURB & GUTTER INLET C/W 1200 CATCH BASIN (SD-024) AND CONNECT TO EXISTING MANHOLE.



PROFILE
SCALE H=1:250
V=1:10



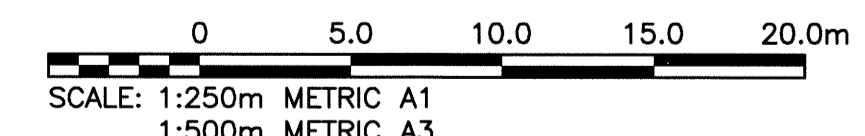
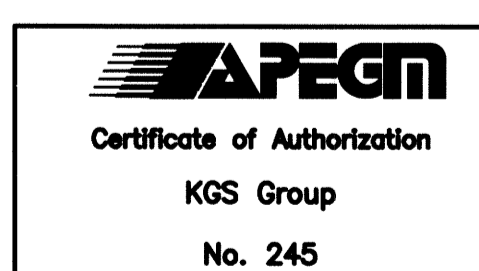
PLAN
SCALE: 1:250

CONTROL LINE COORDINATES		
POINT/STATION	NORTHING	EASTING
POT 0+75.61	5535210.738	630844.301
POC 2+18.40	5535353.404	630838.528
POT 3+83.50	5535513.715	630870.823
POT 5+10.25	5535628.496	630924.586

WARNING
NOTIFY THE GAS COMPANY OF THE PROPOSED LOCATION OF EXCAVATION. TAKE PRECAUTION TO AVOID DAMAGE TO GAS COMPANY INSTALLATIONS. SEE PROVINCIAL REGULATION 210/72 FOR DETAILS.

METRIC
WHOLE NUMBERS INDICATE MILLIMETRES
DECIMALIZED NUMBERS INDICATE METRES

PROPERTY LIMITS DELINEATION
DELINEATION OF PROPERTY LIMITS AS SHOWN ON THIS DWG DOES NOT REPRESENT A "LEGAL SURVEY". KGS GROUP MAKES NO REPRESENTATION OR WARRANTY AS TO THE ACCURACY OF PROPERTY LIMITS DELINEATED ON THIS DWG, NOR ON THE DIMENSIONAL ACCURACY OF DWG FEATURES RELATIVE TO THOSE PROPERTY LIMITS.



P:\Projects\2013\13-0107-030\Drawings\13-0107-030_CALL.dwg - Tab: C10 Plotted By: dderoché 09/06/2014 [Wed 8:55am] PLOT: 1:1 A1

300 LDS	LAND DRAINAGE SEWER	300 LDS	⊙	TREE		PLANING - REMOVAL	
250 WWS	WASTE WATER SEWER	250 WWS	⊙	TEST HOLE		PARTIAL DEPTH PATCH	
---	GAS	---	---	GUY WIRE			
---	HYDRO	---	---	LIGHT STANDARD			
---	M.T.S.	---	---	BACK OF CURB			
---	WATERMAIN	150 WM	---	CONCRETE			
⊕	HYDRANT		⊕	ASPHALT			
⊕	VALVE		⊕	SIDEWALK	X-X	Q PROFILE	
⊕	MANHOLE		⊕	PROPERTY LINE	---	N/W LANE EDGE	
⊕	CATCH BASIN		⊕	SURVEY BAR	---	S/E LANE EDGE	
⊕	CURB INLET		⊕	GEODETIC BENCHMARK	⊕	PARKING/DRIVEWAY	
•	POLES T-HYDRO	231.334	⊕	ELEVATION	(32.231)	WINDOW/DOOR SILL	
EXISTING	LEGEND-PLAN	PROPOSED	EXISTING	LEGEND-PLAN	PROPOSED	EXISTING	LEGEND-PROFILE

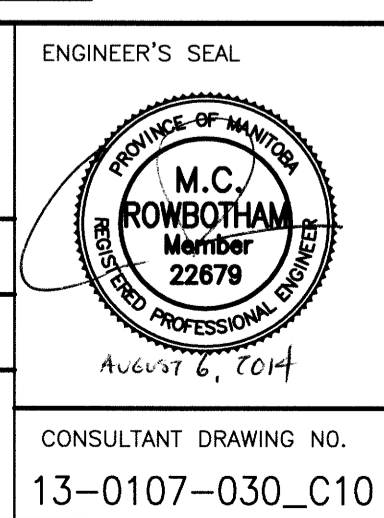
LOCATION APPROVED UNDERGROUND STRUCTURES

SUPV. U/G STRUCTURES COMMITTEE DATE

NOTE:
LOCATION OF UNDERGROUND STRUCTURES AS SHOWN ARE BASED ON THE BEST INFORMATION AVAILABLE BUT NO GUARANTEE IS GIVEN THAT ALL EXISTING UTILITIES ARE SHOWN OR THAT THE GIVEN LOCATIONS ARE EXACT. CONFIRMATION OF EXISTENCE AND EXACT LOCATION OF ALL SERVICES MUST BE OBTAINED FROM THE INDIVIDUAL UTILITIES BEFORE PROCEEDING WITH CONSTRUCTION.

B.M. 15-044	NW Cor Jefferson Ave & Manila Rd. Tilt on top on 0.05m ² x 2.4m iron plate, 2.7m E of W. of Manila Rd & on the production of M. of Jefferson Ave produced from W
ELEV. 231.497	

DESIGNED BY	JB	CHECKED BY	CK
DRAWN BY	GEL	APPROVED BY	A/H
HOR. SCALE:	1:250	RELEASED FOR CONSTRUCTION:	
VERTICAL:		DATE	14/07/20
NO. REVISIONS		DATE	14/08/06



THE CITY OF WINNIPEG
PUBLIC WORKS DEPARTMENT
TRANSPORTATION ENGINEERING DIVISION

PROJECT TITLE: **2014 LOCAL STREET RENEWAL PROGRAM**

MANILA ROAD
ADSUM DR TO JEFFERSON AVE
ADSUM DR TO STA 2+10

ENGINEER'S SEAL: M.C. ROWBOTHAM, Member 22879, August 6, 2014

CONSULTANT DRAWING NO.: 13-0107-030_C10

SHEET OF	10	19
COMPUTER FILE NAME	13-0107-030_CALL	
DRAWING NUMBER	C10	