

CONTROL LINE COORDINATES		
POINT/STATION	NORTHING	EASTING
POT 0+75.61	5535210.738	630844.301
POC 2+18.40	5535353.404	630838.528
POT 3+83.50	5535513.715	630870.823
POT 5+10.25	5535628.496	630924.586

**CONSTRUCTION SCOPE OF WORK**

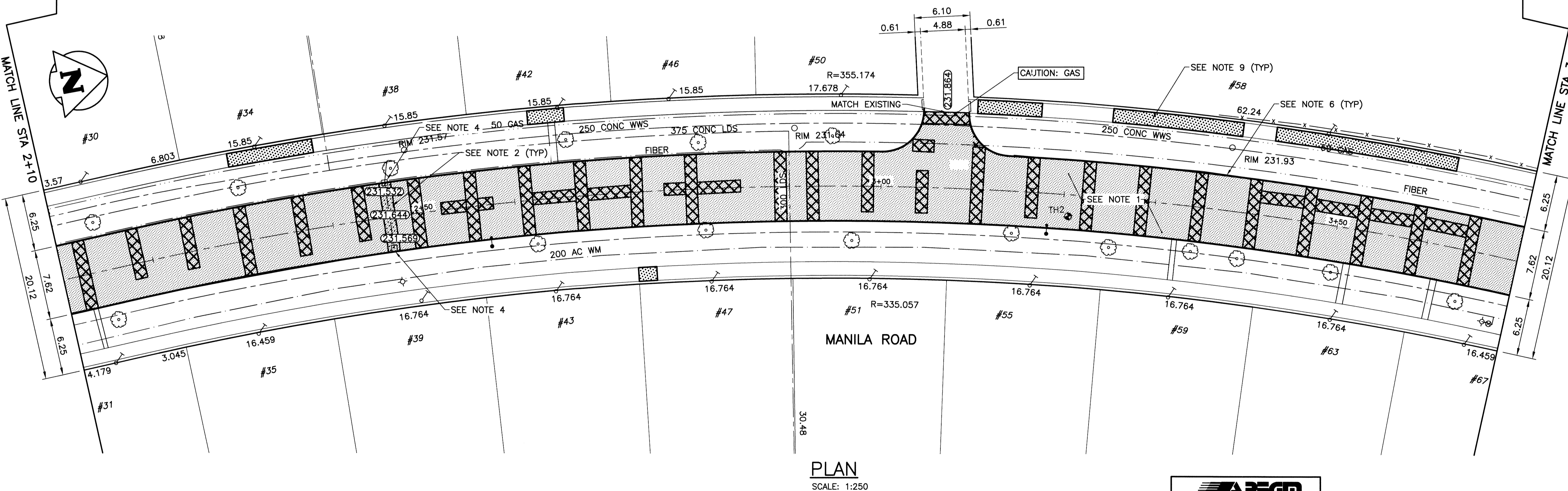
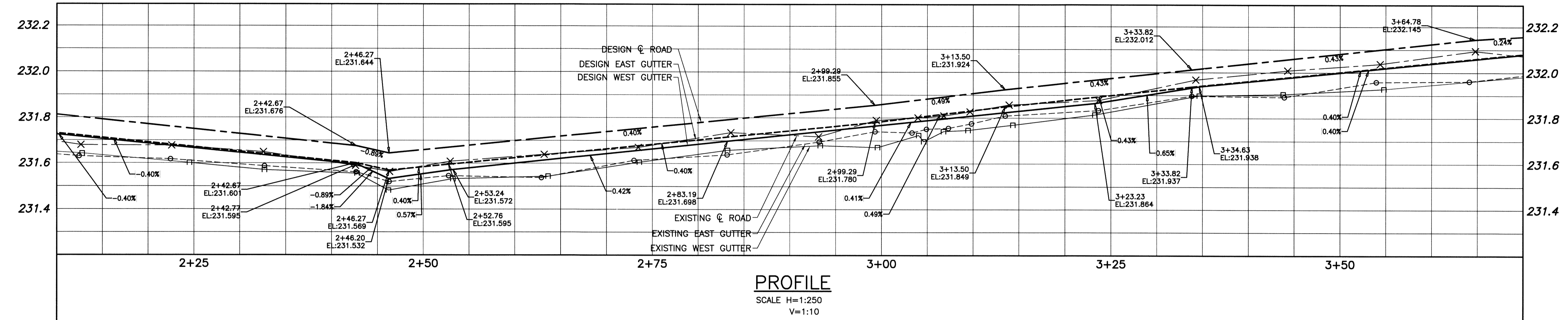
- CONCRETE PAVEMENT RENEWALS (SLAB, JOINT, ISOLATIONS)
- INSTALL BARRIER CURB
- PLACEMENT OF ASPHALT OVERLAY
- SIDEWALK RENEWAL

**REFERENCE NOTES:**

- ALL PAVEMENT DIMENSIONS ARE TO BACK OF CURB.
- LEGAL PLAN AND UNDERGROUND INFORMATION FROM CITY OF WINNIPEG LBIS. CONTRACTOR TO VERIFY ALL UNDERGROUNDS IN THE FIELD.
- CONTROL LINE IS CENTRELINE OF RIGHT-OF-WAY.
- ALL SIDEWALK, CURB, AND CONCRETE REPAIRS TO BE MARKED OUT IN FIELD BY CONTRACT ADMINISTRATOR.
- ALL ADJUSTMENTS FOR CATCH BASINS, MANHOLES, VALVES & INLETS TO BE MARKED IN FIELD BY CONTRACT ADMINISTRATOR.
- PAVEMENT REPAIRS SHOWN ARE ONLY A REPRESENTATIVE APPROXIMATION OF THE TENDERED QUANTITIES.
- CONTRACTOR TO COMPLETE RECONSTRUCTION OF STREET LIGHTING (BASES, WIRING & LAMP STANDARDS).
- CONTRACTOR TO TAKE PRECAUTIONARY STEPS TO PROTECT EXISTING TREES FROM CONSTRUCTION ACTIVITIES.

**CONSTRUCTION NOTES:**

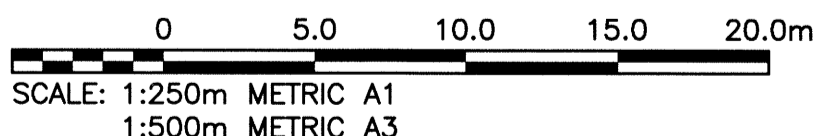
- PLACE NEW ASPHALTIC PAVEMENT OVERLAY (TYPE 1A, 70mm AVERAGE THICKNESS).
- REMOVE EXISTING CONCRETE PAVEMENT AND CONSTRUCT NEW REINFORCED CONCRETE PAVEMENT (150mm) C/W ASPHALTIC PAVEMENT OVERLAY (70mm AVERAGE THICKNESS).
- REMOVE EXISTING FRAME AND COVER AND INSTALL NEW.
- ADJUST EXISTING MANHOLE/CATCHBASIN.
- CONSTRUCT NEW BARRIER CURB AND GUTTER (SD-200).
- PLANE EXISTING LIP CURB AND REPLACE WITH NEW LIP CURB (75mm REVEAL, DOWELED, SD-202C).
- CONSTRUCT NEW MODIFIED BARRIER CURB (180mm, SEPARATE).
- CONSTRUCT NEW CURB RAMP (SD-229A).
- RENEW EXISTING CONCRETE SIDEWALK (SD-18A).
- ADJUST WATER VALVE.
- REMOVE EXISTING INLET.
- INSTALL NEW CURB & GUTTER INLET C/W CATCH PIT (SD-023) AND CONNECT TO EXISTING LEAD.
- INSTALL NEW CURB & GUTTER INLET C/W 1200 CATCH BASIN (SD-024) AND CONNECT TO EXISTING MANHOLE.



**WARNING**  
 NOTIFY THE GAS COMPANY OF THE PROPOSED LOCATION OF EXCAVATION. TAKE PRECAUTION TO AVOID DAMAGE TO GAS COMPANY INSTALLATIONS. SEE PROVINCIAL REGULATION 210/72 FOR DETAILS.

**METRIC**  
 WHOLE NUMBERS INDICATE MILLIMETRES  
 DECIMALIZED NUMBERS INDICATE METRES

**PROPERTY LIMITS DELINEATION**  
 DELINEATION OF PROPERTY LIMITS AS SHOWN ON THIS DWG DOES NOT REPRESENT A "LEGAL SURVEY". KGS GROUP MAKES NO REPRESENTATION OR WARRANTY AS TO THE ACCURACY OF PROPERTY LIMITS DELINEATED ON THIS DWG, NOR ON THE DIMENSIONAL ACCURACY OF DWG FEATURES RELATIVE TO THOSE PROPERTY LIMITS.



EXISTING	LEGEND-PLAN	PROPOSED	EXISTING	LEGEND-PROFILE	PROPOSED
---	LAND DRAINAGE SEWER	---	○	TREE	XXXX
---	WASTE WATER SEWER	---	○	TEST HOLE	
---	GAS	---	○	GUY WIRE	
---	HYDRO	---	○	LIGHT STANDARD	
---	M.T.S.	---	○	BACK OF CURB	
---	WATERMAIN	---	---	CONCRETE	
○	HYDRANT	+	---	ASPHALT	
○	VALVE	+	---	SIDEWALK	
○	MANHOLE	●	---	PROPERTY LINE	
○	CATCH BASIN	+	---	SURVEY BAR	
▽	CURB INLET	▽	○	GEODETIC BENCHMARK	
•	POLES	•	○	ELEVATION	(32.231)
---	LEGEND-PLAN	---	---	LEGEND-PROFILE	---

**LOCATION APPROVED UNDERGROUND STRUCTURES**  
 SUPV. U/G STRUCTURES COMMITTEE DATE  
 NOTE: LOCATION OF UNDERGROUND STRUCTURES AS SHOWN ARE BASED ON THE BEST INFORMATION AVAILABLE BUT NO GUARANTEE IS GIVEN THAT ALL EXISTING UTILITIES ARE SHOWN OR THAT THE GIVEN LOCATIONS ARE EXACT. CONFIRMATION OF EXISTENCE AND EXACT LOCATION OF ALL SERVICES MUST BE OBTAINED FROM THE INDIVIDUAL UTILITIES BEFORE PROCEEDING WITH CONSTRUCTION.

NO.	REVISIONS	DATE	BY
0	ISSUED FOR TENDER	14/08/06	CR

DESIGNED BY	JB	CHECKED BY	CR
DRAWN BY	GEL	APPROVED BY	AK
HOR. SCALE:	1:250	RELEASED FOR CONSTRUCTION:	
VERTICAL:		DATE	14/07/20

ENGINEER'S SEAL  
 M.C. ROWBOTHAM  
 Member  
 22679  
 August 6, 2014

**THE CITY OF WINNIPEG**  
 PUBLIC WORKS DEPARTMENT  
 TRANSPORTATION ENGINEERING DIVISION

PROJECT TITLE: **2014 LOCAL STREET RENEWAL PROGRAM**  
**MANILA ROAD**  
 ADSUM DR TO JEFFERSON AVE  
 STA 2+10 TO STA 3+70

CONSULTANT DRAWING NO. 13-0107-030\_C11

SHEET OF 11 19  
 COMPUTER FILE NAME 13-0107-030\_CALL  
 DRAWING NUMBER C11

P:\Projects\2013\13-0107-030\Draw\Man\13-0107-030\_CALL.dwg - Tab: C11 Plotted By: dderoché 08/06/2014 [Wed 8:55am] PLOT: 1:1 A-1