

**PAVEMENT SECTION**

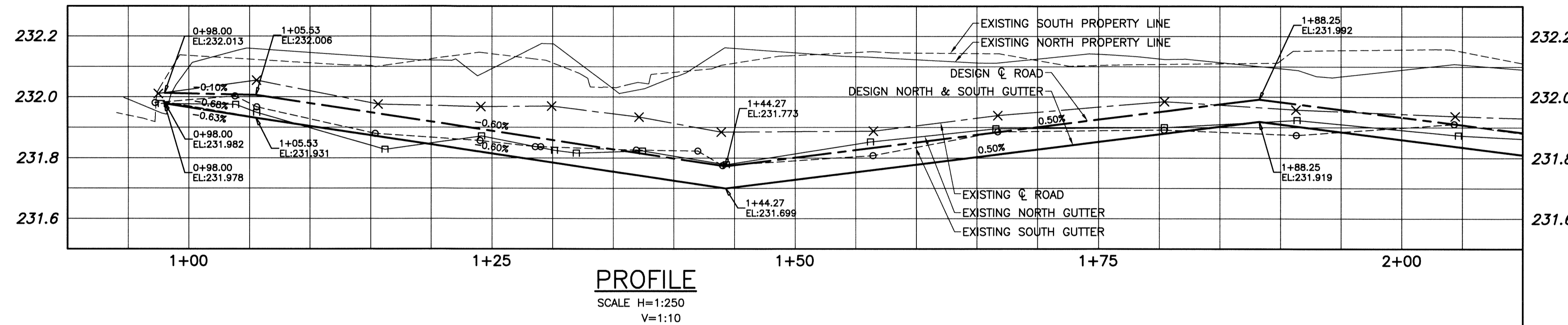
SCALE HOR 1:100  
VER 1:50

**REFERENCE NOTES:**

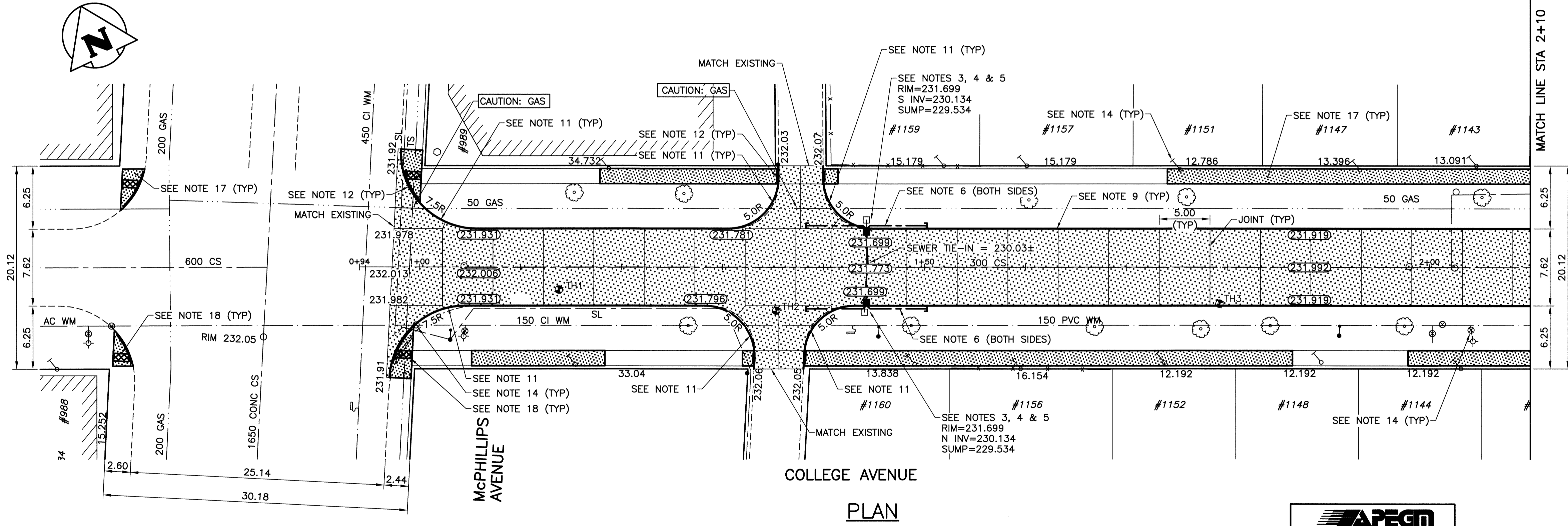
- A. ALL PAVEMENT DIMENSIONS ARE TO BACK OF CURB.
- B. STATION CHAINAGE IS BASED ON CENTRELINE OF COLLEGE AVENUE.
- C. LEGAL PLAN AND UNDERGROUND INFORMATION BASED ON CITY OF WINNIPEG LBIS. CONTRACTOR TO VERIFY ALL UNDERGROUNDS IN THE FIELD.
- D. ALL PERMITS AND CLEARANCES REQUIRED PRIOR TO EXCAVATION WORKS.
- E. LOCATION OF EXISTING SERVICES TO BE CONFIRMED IN THE FIELD BY THE CONTRACTOR.
- F. LIMITS OF SIDEWALK RENEWAL AND BOULEVARD GRADING TO BE CONFIRMED IN THE FIELD BY THE CONTRACT ADMINISTRATOR.

**CONSTRUCTION NOTES:**

1. REMOVE EXISTING CURB, ASPHALT AND CONCRETE PAVEMENT.
2. EXCAVATE EXISTING PAVEMENT BASE MATERIALS AND SOIL TO DESIGN SUBGRADE DEPTH.
3. REMOVE EXISTING CATCH BASIN AND CURB INLET (WHERE NOTED).
4. INSTALL NEW CATCH BASIN WITH CURB AND GUTTER INLET FRAME & COVER (WHERE NOTED).
5. REPLACE CATCH BASIN SEWER SERVICE AND CONNECTION TO SEWER (WHERE NOTED).
6. INSTALL 6.0m SUBDRAIN (WHERE NOTED). CONNECT TO CATCH BASIN AND CAP ENDS.
7. SUBGRADE COMPACTION SHALL BE AT THE DISCRETION OF THE CONTRACT ADMINISTRATOR. THE 300Ø CLAY COMBINED SEWER IS WITHIN 600mm OF SUBGRADE AT VARIOUS LOCATIONS ALONG THE CENTRELINE OF COLLEGE AVENUE.
8. CONSTRUCT NEW SUB-BASE, BASE AND REINFORCED CONCRETE PAVEMENT.
9. CONSTRUCT NEW BARRIER CURB (WHERE NOTED, SD-200, INTEGRAL).
10. CONSTRUCT NEW LIP CURB (WHERE NOTED, SD-202B, 40mm, INTEGRAL).
11. CONSTRUCT NEW MODIFIED BARRIER CURB (WHERE NOTED, SD-203B).
12. CONSTRUCT NEW CURB RAMP (WHERE NOTED, SD-229).
13. REPLACE EXISTING MANHOLE FRAME & COVER WHERE DIRECTED IN THE FIELD BY THE CONTRACT ADMINISTRATOR.
14. ADJUST VALVES, CURB STOPS, AND MANHOLE AND CATCH BASIN RIMS TO NEW GRADES.
15. ISOLATE MANHOLES AND CATCH BASINS IN ACCORDANCE (SD-220).
16. ISOLATE ALL HYDRANTS, POLES, BASES AND PILES WITHIN SIDEWALK (SD-228C).
17. RENEW EXISTING CONCRETE SIDEWALK (SD-228A).
18. INSTALL SIDEWALK DETECTABLE WARNING TILES ON PUBLIC SIDEWALK AT ROAD CROSSINGS (WHERE NOTED). ORIENT SIDEWALK DETECTABLE WARNING TILES SO THAT EDGES PARALLEL WITH WALKING DIRECTION ARE ALIGNED WITH SIDEWALK RAMP ON OPPOSITE SIDE OF STREET.
19. RECONSTRUCT RESIDENTIAL APPROACH (SD-235).
20. DO NOT DAMAGE TREES WITHIN THE CONSTRUCTION LIMITS.



**PROFILE**  
SCALE H=1:250  
V=1:10



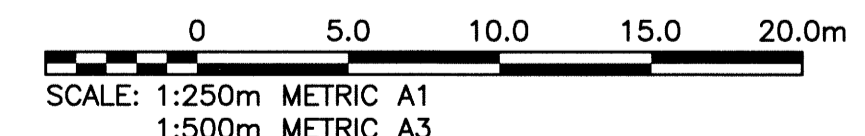
**PLAN**  
SCALE: 1:250

CONTROL LINE COORDINATES		
POINT/STATION	NORTHING	EASTING
POT 0+94.04	5532530.423	631521.452
POT 3+58.08	5532418.308	631760.497

**WARNING**  
NOTIFY THE GAS COMPANY OF THE PROPOSED LOCATION OF EXCAVATION. TAKE PRECAUTION TO AVOID DAMAGE TO GAS COMPANY INSTALLATIONS. SEE PROVINCIAL REGULATION 210/72 FOR DETAILS.

**METRIC**  
WHOLE NUMBERS INDICATE MILLIMETRES  
DECIMALIZED NUMBERS INDICATE METRES

**PROPERTY LIMITS DELINEATION**  
DELINEATION OF PROPERTY LIMITS AS SHOWN ON THIS DWG DOES NOT REPRESENT A "LEGAL SURVEY". KGS GROUP MAKES NO REPRESENTATION OR WARRANTY AS TO THE ACCURACY OF PROPERTY LIMITS DELINEATED ON THIS DWG, NOR ON THE DIMENSIONAL ACCURACY OF DWG FEATURES RELATIVE TO THOSE PROPERTY LIMITS.



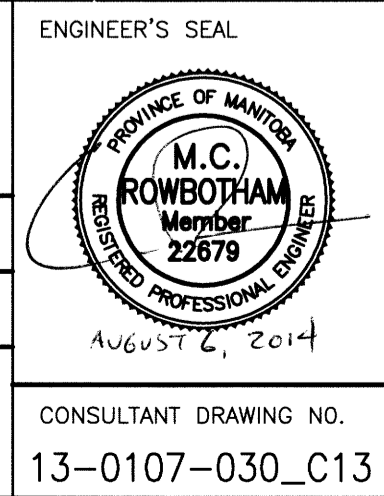
EXISTING	LEGEND-PLAN	PROPOSED	EXISTING	LEGEND-PROFILE	PROPOSED
300 LDS	LAND DRAINAGE SEWER	300 LDS	⊗	DETECTABLE WARNING TILE	⊗
250 WWS	WASTE WATER SEWER	250 WWS	⊕	TEST HOLE	⊕
---	GAS	---	—	GUY WIRE	—
---	HYDRO	---	—	LIGHT STANDARD	—
---	M.T.S.	---	—	BACK OF CURB	—
150 WM	WATERMAIN	150 WM	—	CONCRETE	—
⊕	HYDRANT	⊕	—	ASPHALT	—
⊕	VALVE	⊕	—	SIDEWALK	—
○	MANHOLE	○	—	PROPERTY LINE	—
□	CATCH BASIN	□	—	SURVEY BAR	—
▽	CURB INLET	▽	—	GEODETTIC BENCHMARK	—
•	POLES	•	—	ELEVATION	—

**LOCATION APPROVED UNDERGROUND STRUCTURES**

NOTE: LOCATION OF UNDERGROUND STRUCTURES AS SHOWN ARE BASED ON THE BEST INFORMATION AVAILABLE BUT NO GUARANTEE IS GIVEN THAT THE GIVEN LOCATIONS ARE EXACT. CONFIRMATION OF EXISTENCE AND EXACT LOCATION OF ALL SERVICES MUST BE OBTAINED FROM THE INDIVIDUAL UTILITIES BEFORE PROCEEDING WITH CONSTRUCTION.

NO.	REVISIONS	DATE	BY
0	ISSUED FOR TENDER	14/08/06	CR

B.M. 25-019 ELEV. 232.038	SE Cor Mountain Ave & Radford St. Brass plug in 7.3m conc pile, 2.6m W of EL of Radford St & 0.6m S of SL Mountain Ave
DESIGNED BY	JDF
CHECKED BY	CR
DRAWN BY	GEL
APPROVED BY	MH
HOR. SCALE:	1:250
VERTICAL:	—
RELEASED FOR CONSTRUCTION:	
DATE	14/07/20



**THE CITY OF WINNIPEG**  
PUBLIC WORKS DEPARTMENT  
TRANSPORTATION ENGINEERING DIVISION

PROJECT TITLE: **2014 LOCAL STREET RENEWAL PROGRAM**  
COLLEGE AVENUE  
McPHILLIPS ST TO RADFORD ST  
McPHILLIPS ST TO STA 2+10

CONSULTANT DRAWING NO. 13-0107-030\_C13

DATE: 14/07/20

P:\Projects\2013\13-0107-030\Draw\Plan\13-0107-030\_CALL.dwg - Tab: 013 Plotted By: dderochs 08/06/2014 [Wed 8:54am] PLOT: 1:1 A-1