

CONSTRUCTION SCOPE OF WORK

- CONCRETE PAVEMENT RENEWALS (SLAB, JOINT, ISOLATIONS)
- INSTALL BARRIER CURB
- PLACEMENT OF ASPHALT OVERLAY
- SIDEWALK RENEWAL

REFERENCE NOTES:

- ALL PAVEMENT DIMENSIONS ARE TO BACK OF CURB.
- LEGAL PLAN AND UNDERGROUND INFORMATION FROM CITY OF WINNIPEG LBS. CONTRACTOR TO VERIFY ALL UNDERGROUNDS IN THE FIELD.
- CONTROL LINE IS CENTRELINE OF RIGHT-OF-WAY.
- ALL SIDEWALK, CURB, AND CONCRETE REPAIRS TO BE MARKED OUT IN FIELD BY CONTRACT ADMINISTRATOR.
- ALL ADJUSTMENTS FOR CATCH BASINS, MANHOLES, VALVES & INLETS TO BE MARKED IN FIELD BY CONTRACT ADMINISTRATOR.
- PAVEMENT REPAIRS SHOWN ARE ONLY A REPRESENTATIVE APPROXIMATION OF THE TENDERED QUANTITIES.
- CONTRACTOR TO COMPLETE RECONSTRUCTION OF STREET LIGHTING (BASES, WIRING & LAMP STANDARDS).
- CONTRACTOR TO TAKE PRECAUTIONARY STEPS TO PROTECT EXISTING TREES FROM CONSTRUCTION ACTIVITIES.

CONSTRUCTION NOTES:

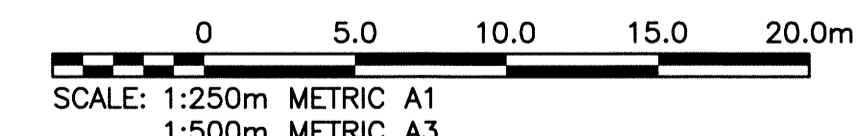
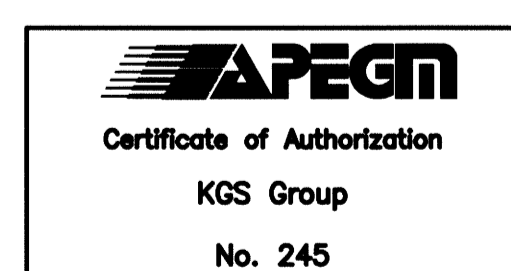
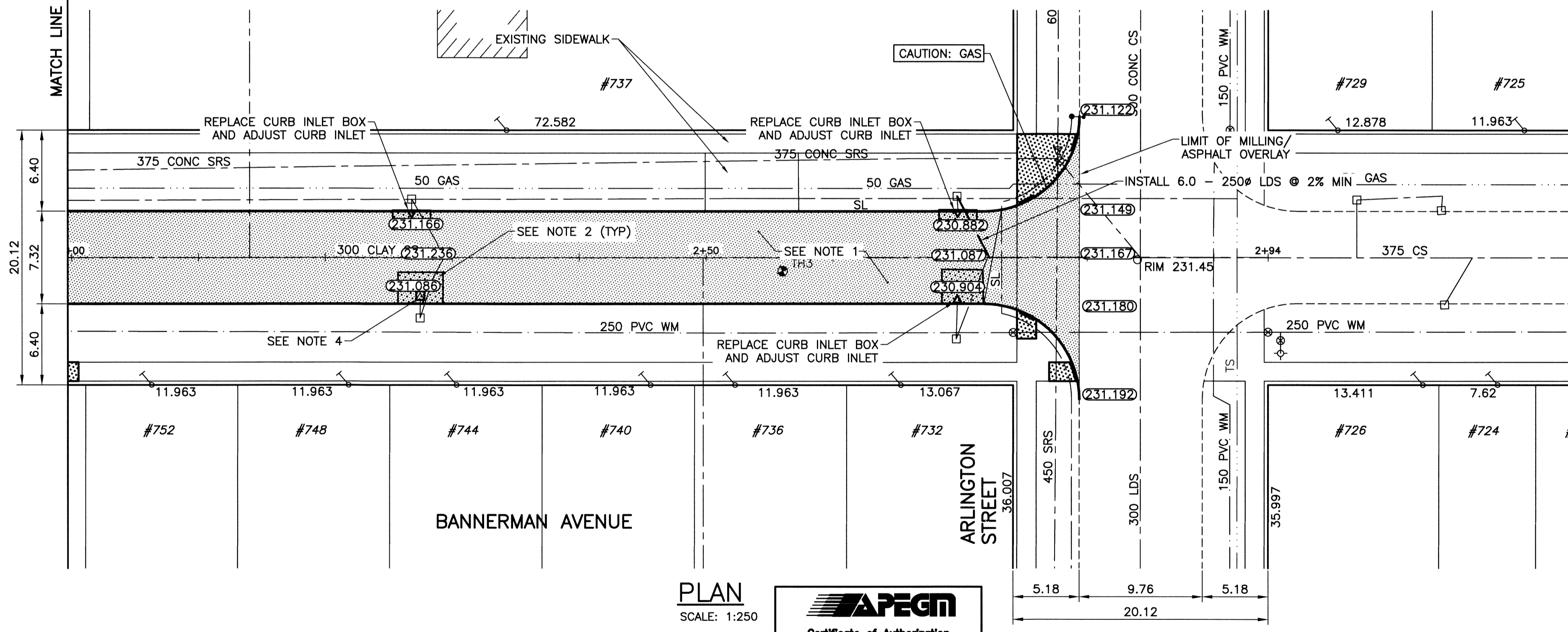
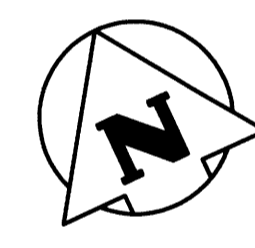
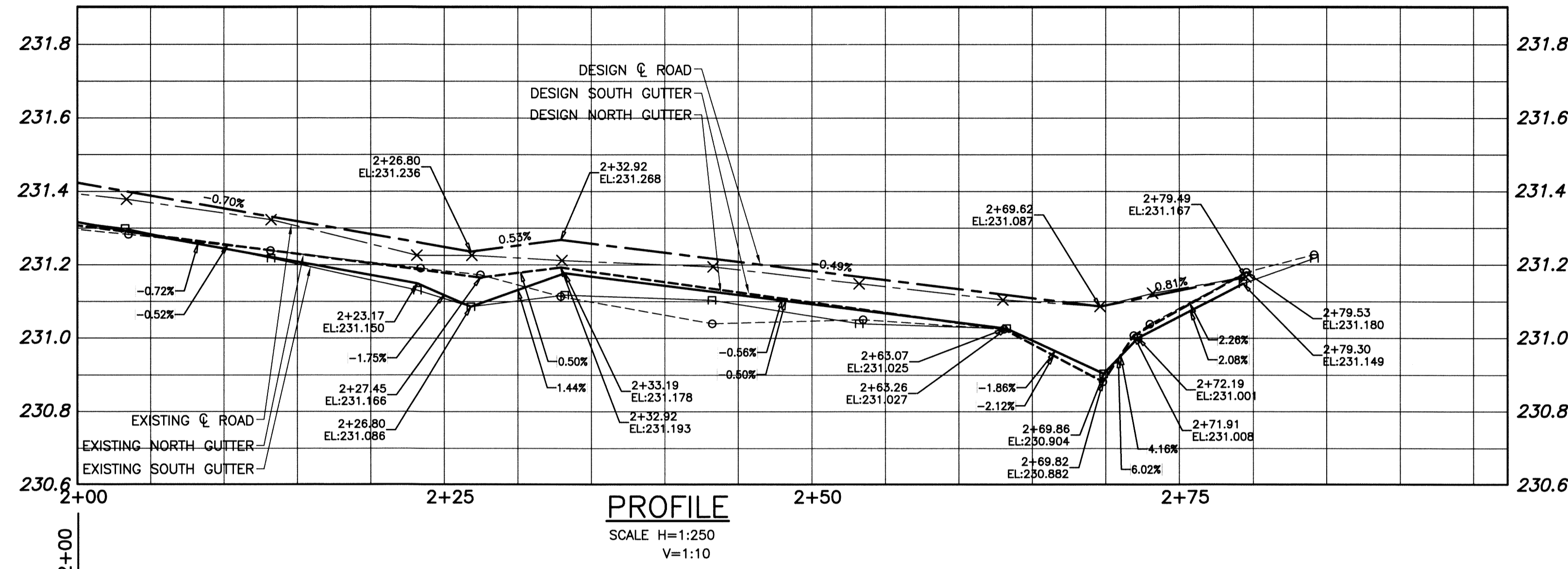
- PLACE NEW ASPHALTIC PAVEMENT OVERLAY (TYPE 1A, 65mm AVERAGE THICKNESS).
- REMOVE EXISTING CONCRETE PAVEMENT AND CONSTRUCT NEW REINFORCED CONCRETE PAVEMENT (150mm) C/W ASPHALTIC PAVEMENT OVERLAY (65mm AVERAGE THICKNESS).
- REMOVE EXISTING LIP CURB AND INSTALL NEW BARRIER CURB (100mm REVEAL HT. DOWELED).
- ADJUST EXISTING MANHOLE/CATCHBASIN.
- CONSTRUCT NEW BARRIER CURB AND GUTTER (SD-200).
- PLANE EXISTING LIP CURB AND REPLACE WITH NEW LIP CURB (75mm REVEAL, DOWELED, SD-202C).
- CONSTRUCT NEW MODIFIED BARRIER CURB (180mm, SEPARATE).
- CONSTRUCT NEW CURB RAMP (SD-229A).
- RENEW EXISTING CONCRETE SIDEWALK (SD-228A).
- ADJUST WATER VALVE.
- REMOVE EXISTING INLET.
- INSTALL NEW CURB & GUTTER INLET C/W CATCH PIT (SD-023) AND CONNECT TO EXISTING LEAD.
- INSTALL NEW CURB & GUTTER INLET C/W 1200 CATCH BASIN (SD-024) AND CONNECT TO EXISTING MANHOLE.

CONTROL LINE COORDINATES		
POINT/STATION	NORTHING	EASTING
POT 0+72.48	5532776.077	632793.057
POT 2+94.27	5532682.210	632994.005

WARNING
 NOTIFY THE GAS COMPANY OF THE PROPOSED LOCATION OF EXCAVATION. TAKE PRECAUTION TO AVOID DAMAGE TO GAS COMPANY INSTALLATIONS. SEE PROVINCIAL REGULATION 210/72 FOR DETAILS.

METRIC
 WHOLE NUMBERS INDICATE MILLIMETRES
 DECIMALIZED NUMBERS INDICATE METRES

PROPERTY LIMITS DELINEATION
 DELINEATION OF PROPERTY LIMITS AS SHOWN ON THIS DWG DOES NOT REPRESENT A "LEGAL SURVEY". KGS GROUP MAKES NO REPRESENTATION OR WARRANTY AS TO THE ACCURACY OF PROPERTY LIMITS DELINEATED ON THIS DWG, NOR ON THE DIMENSIONAL ACCURACY OF DWG FEATURES RELATIVE TO THOSE PROPERTY LIMITS.



P:\Projects\2013\13-0107-030\Drawings\13-0107-030_CALL.dwg - Tab: C16 Plotted By: dderoché 08/06/2014 [Wed 8:54am] PLOT: 1:1 A-1

300_LDS	LAND DRAINAGE SEWER	300_LDS	TREE
250_WWS	WASTE WATER SEWER	250_WWS	TEST HOLE
---	GAS	---	GUY WIRE
---	HYDRO	---	LIGHT STANDARD
---	M.T.S.	---	BACK OF CURB
150_WM	WATERMAIN	150_WM	CONCRETE
+	HYDRANT	+	ASPHALT
+	VALVE	+	SIDEWALK
o	MANHOLE	o	PROPERTY LINE
□	CATCH BASIN	□	SURVEY BAR
▽	CURB INLET	▽	GEODETIC BENCHMARK
•	POLES	•	ELEVATION
---	EXISTING	---	PROPOSED
---	LEGEND-PLAN	---	LEGEND-PROFILE

LOCATION APPROVED UNDERGROUND STRUCTURES
 SUPV. U/G STRUCTURES DATE COMMITTEE
 NOTE: LOCATION OF UNDERGROUND STRUCTURES AS SHOWN ARE BASED ON THE BEST INFORMATION AVAILABLE BUT NO GUARANTEE IS GIVEN THAT ALL EXISTING UTILITIES ARE SHOWN OR THAT THE GIVEN LOCATIONS ARE EXACT. CONFIRMATION OF EXISTENCE AND EXACT LOCATION OF ALL SERVICES MUST BE OBTAINED FROM THE INDIVIDUAL UTILITIES BEFORE PROCEEDING WITH CONSTRUCTION.

S.M. 25-028
 ELEV. 231.244
 NW Cor of Bannerman Ave & Arlington St Brass plug in 4.6m Conc. Pile, 2.4m E of WL of Arlington St & 0.3m N. of N.L. of Bannerman Ave

DESIGNED BY	JB	CHECKED BY	CR
DRAWN BY	GEL	APPROVED BY	PH
HOR. SCALE:	1:250	RELEASED FOR CONSTRUCTION:	
VERTICAL:		DATE	14/07/20
NO. REVISIONS		DATE	14/08/06

ENGINEER'S SEAL
 M.G. ROWBOTHAM
 22678
 AUGUST 6, 2014

THE CITY OF WINNIPEG
 PUBLIC WORKS DEPARTMENT
 TRANSPORTATION ENGINEERING DIVISION

PROJECT TITLE: 2014 LOCAL STREET RENEWAL PROGRAM
 SHEET OF: 16 OF 19

BANNERMAN AVENUE
 SINCLAIR ST TO ARLINGTON ST
 STA 2+00 TO ARLINGTON ST

COMPUTER FILE NAME: 13-0107-030_CALL
 DRAWING NUMBER: C16