

PAVEMENT SECTION

SCALE HOR 1:100
VER 1:50

REFERENCE NOTES:

- A. ALL PAVEMENT DIMENSIONS ARE TO BACK OF CURB.
- B. STATION CHAINAGE IS BASED ON CENTRELINE OF GARTON AVENUE.
- C. LEGAL PLAN AND UNDERGROUND INFORMATION BASED ON CITY OF WINNIPEG LBIS. CONTRACTOR TO VERIFY ALL UNDERGROUNDS IN THE FIELD.
- D. ALL PERMITS AND CLEARANCES REQUIRED PRIOR TO EXCAVATION WORKS.
- E. LOCATION OF EXISTING SERVICES TO BE CONFIRMED IN THE FIELD BY THE CONTRACTOR.
- F. LIMITS OF SIDEWALK RENEWAL AND BOULEVARD GRADING TO BE CONFIRMED IN THE FIELD BY THE CONTRACT ADMINISTRATOR.
- G. CONTRACTOR TO COMPLETE RECONSTRUCTION OF STREET LIGHTING (BASES, WIRING & LAMP STANDARDS).

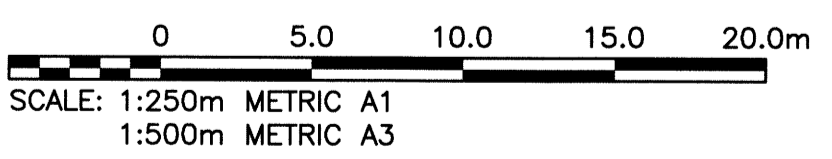
CONSTRUCTION NOTES:

1. REMOVE EXISTING CONCRETE PAVEMENT AND CONSTRUCT NEW ASPHALTIC PAVEMENT (TYPE 1A, 100mm).
2. REMOVE EXISTING CONCRETE PAVEMENT AND CONSTRUCT NEW REINFORCED CONCRETE PAVEMENT (150mm).
3. REPLACE EXISTING FRAME & COVER.
4. ADJUST EXISTING MANHOLE/CATCHBASIN.
5. CONSTRUCT NEW BARRIER CURB AND GUTTER (SD-200). CONSTRUCT MODIFIED BARRIER AT INTERSECTION RADII.
6. CONSTRUCT NEW LIP CURB AND GUTTER (40mm, INTEGRAL).
7. CONSTRUCT NEW MODIFIED BARRIER CURB (180mm, SEPARATE).
8. CONSTRUCT NEW CURB RAMP (SD-229A).
9. RENEW EXISTING CONCRETE SIDEWALK (SD-228A).
10. ADJUST WATER VALVE.
11. INSTALL 6.0 SUBDRAIN, CONNECT TO CATCH BASIN AND CAP ENDS (CW 3120).
12. RENEW CABLE GUARD AND CABLE.
13. INSTALL NEW CURB & GUTTER INLET C/W CATCH BASIN (SD-024) AND CONNECT TO EXISTING 600 CS.
14. REMOVE EXISTING CATCH BASIN.
15. CONSTRUCT NEW 300 PVC SEWER SERVICE FROM CATCH BASIN AND CONNECT TO EXISTING 600 CS.
16. ABANDON EXISTING SEWER SERVICE.
17. REMOVE EXISTING INLET.
18. DO NOT DAMAGE TREES WITHIN CONSTRUCTION LIMITS.
19. RECONSTRUCT RESIDENTIAL APPROACH (SD-235).

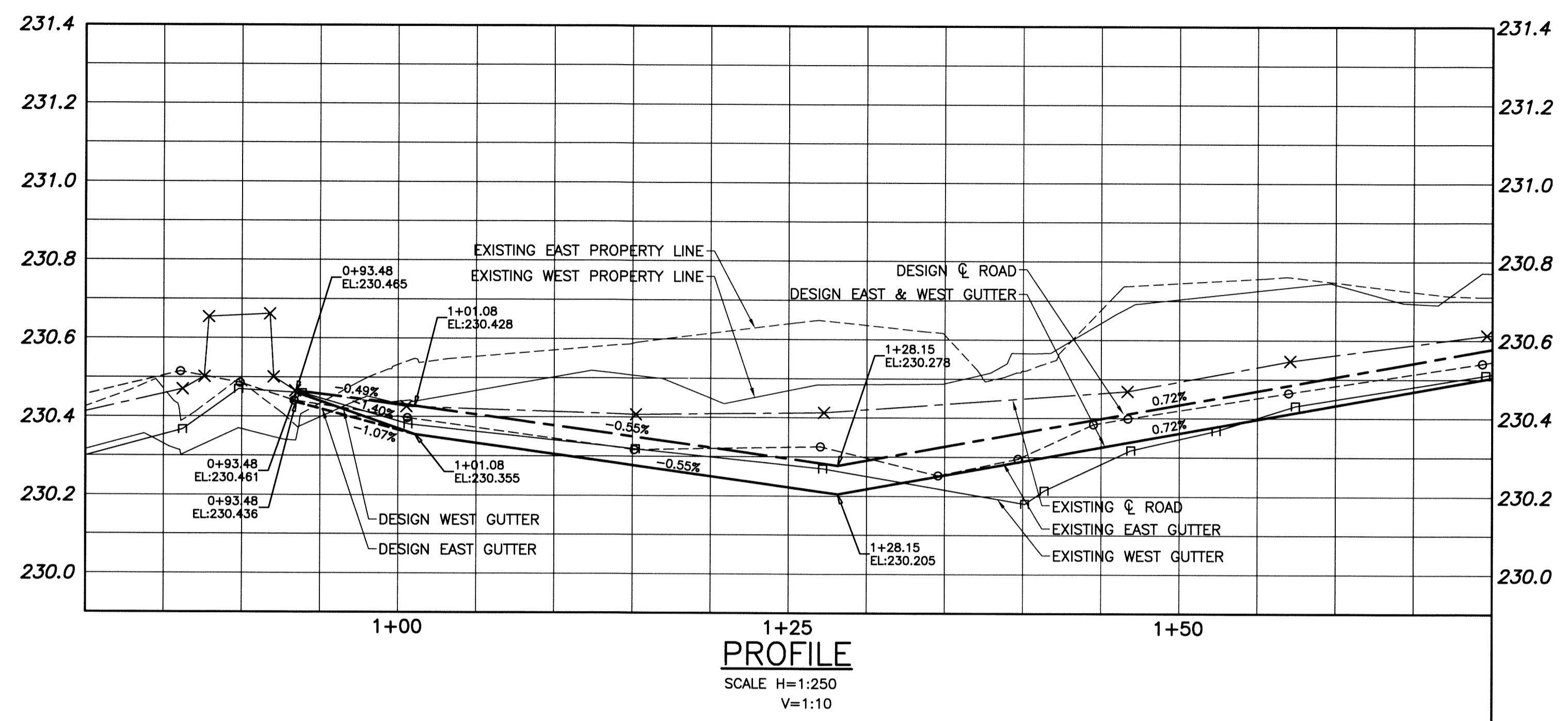
WARNING
NOTIFY THE GAS COMPANY OF THE PROPOSED LOCATION OF EXCAVATION. TAKE PRECAUTION TO AVOID DAMAGE TO GAS COMPANY INSTALLATIONS. SEE PROVINCIAL REGULATION 210/72 FOR DETAILS.

METRIC
WHOLE NUMBERS INDICATE MILLIMETRES
DECIMALIZED NUMBERS INDICATE METRES

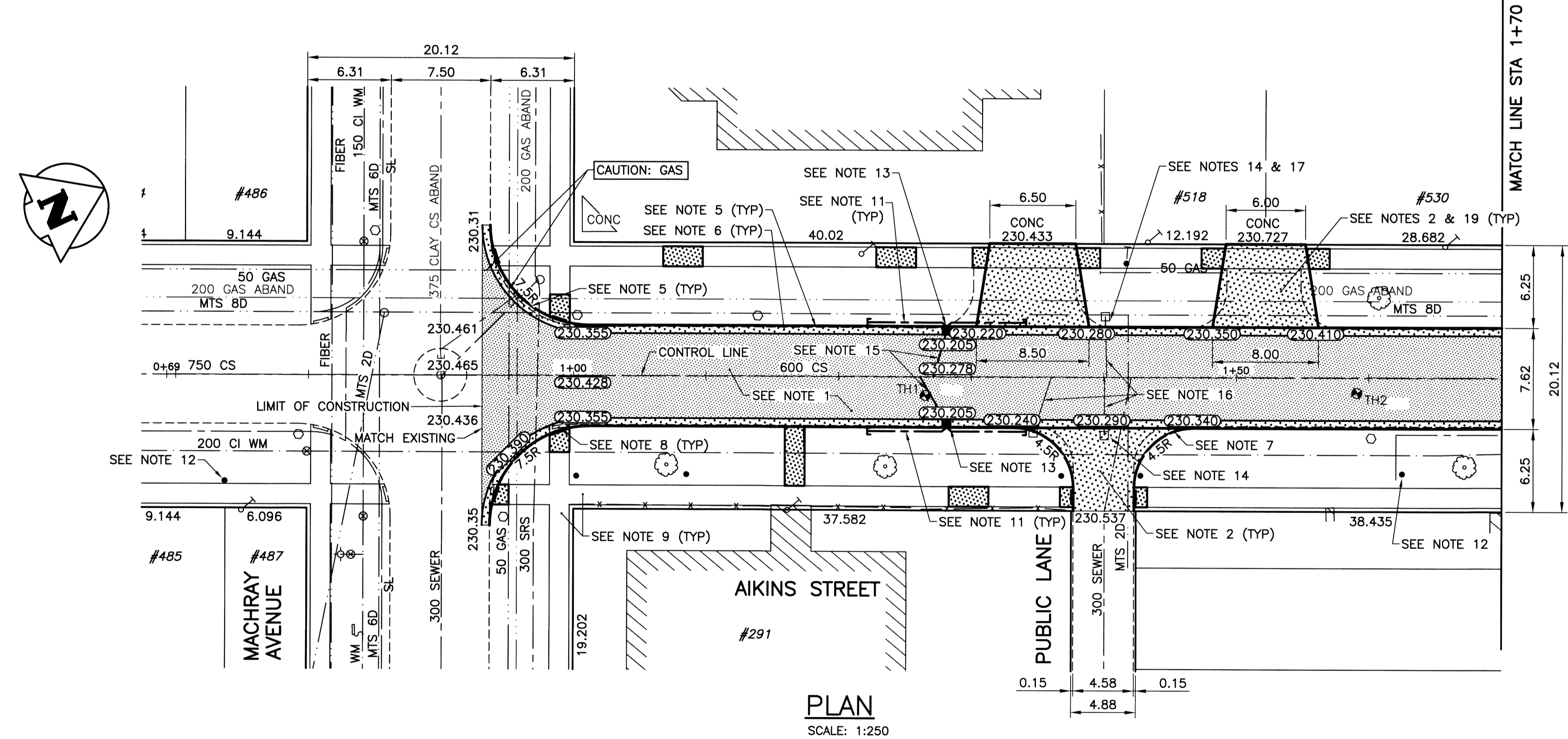
CONTROL LINE COORDINATES		
POINT/STATION	NORTHING	EASTING
POT 0+0.000	5531903.561	634176.820
POT 3+0.000	5532166.351	634299.464



PROPERTY LIMITS DELINEATION
DELINEATION OF PROPERTY LIMITS AS SHOWN ON THIS DWG DOES NOT REPRESENT A "LEGAL SURVEY". KGS GROUP MAKES NO REPRESENTATION OR WARRANTY AS TO THE ACCURACY OF PROPERTY LIMITS DELINEATED ON THIS DWG, NOR ON THE DIMENSIONAL ACCURACY OF DWG FEATURES RELATIVE TO THOSE PROPERTY LIMITS.



PROFILE
SCALE H=1:250
V=1:10



PLAN
SCALE: 1:250

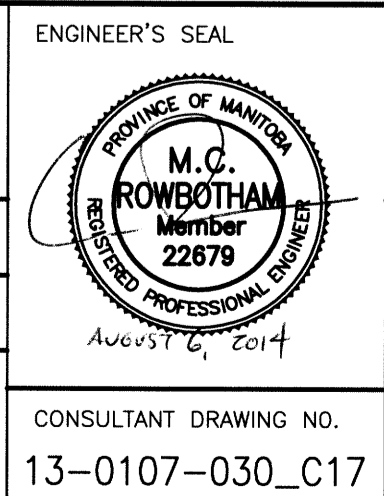


EXISTING	LEGEND-PLAN	PROPOSED	EXISTING	LEGEND-PROFILE	PROPOSED
300 LDS	LAND DRAINAGE SEWER	300 LDS	DETECTABLE WARNING TILE		
250 WWS	WASTE WATER SEWER	250 WWS	TEST HOLE		
	GAS		GUY WIRE		
	HYDRO		LIGHT STANDARD		
	M.T.S.		BACK OF CURB		
150 WM	WATERMAIN	150 WM	CONCRETE		
	HYDRANT		ASPHALT		
	VALVE		SIDEWALK		
	MANHOLE		PROPERTY LINE		
	CATCH BASIN		SURVEY BAR		
	CURB INLET		GEODETIC BENCHMARK		
	POLES		ELEVATION	231.334	
	T-MTS				
	H-HYDRO				

LOCATION APPROVED UNDERGROUND STRUCTURES
SUPV. U/G STRUCTURES COMMITTEE DATE
NOTE: LOCATION OF UNDERGROUND STRUCTURES AS SHOWN ARE BASED ON THE BEST INFORMATION AVAILABLE BUT NO GUARANTEE IS GIVEN THAT ALL EXISTING UTILITIES ARE SHOWN OR THAT THE GIVEN LOCATIONS ARE EXACT. CONFIRMATION OF EXISTENCE AND EXACT LOCATION OF ALL SERVICES MUST BE OBTAINED FROM THE INDIVIDUAL UTILITIES BEFORE PROCEEDING WITH CONSTRUCTION.

NO.	REVISIONS	DATE	BY
0	ISSUED FOR TENDER	14/08/06	CR

DESIGNED BY	JDF	CHECKED BY	CR
DRAWN BY	GEL	APPROVED BY	RJH
HOR. SCALE:	1:250	RELEASED FOR CONSTRUCTION:	
VERTICAL:	-	DATE	14/07/20



THE CITY OF WINNIPEG
PUBLIC WORKS DEPARTMENT
TRANSPORTATION ENGINEERING DIVISION

PROJECT TITLE: 2014 LOCAL STREET RENEWAL PROGRAM
AIKINS STREET
MACHRAY AVE TO ATLANTIC AVE
MACHRAY AVE TO STA 1+70

CONSULTANT DRAWING NO. 13-0107-030_CALL

SHEET OF 17 19
COMPUTER FILE NAME 13-0107-030_CALL
CITY DRAWING NUMBER C17

P:\Projects\2013\13-0107-030\Draw\Main\13-0107-030_CALL.dwg - Tab: C17 Plotted By: dderoché 08/08/2014 [Wed 8:53am] PLOT: 1:1 A-