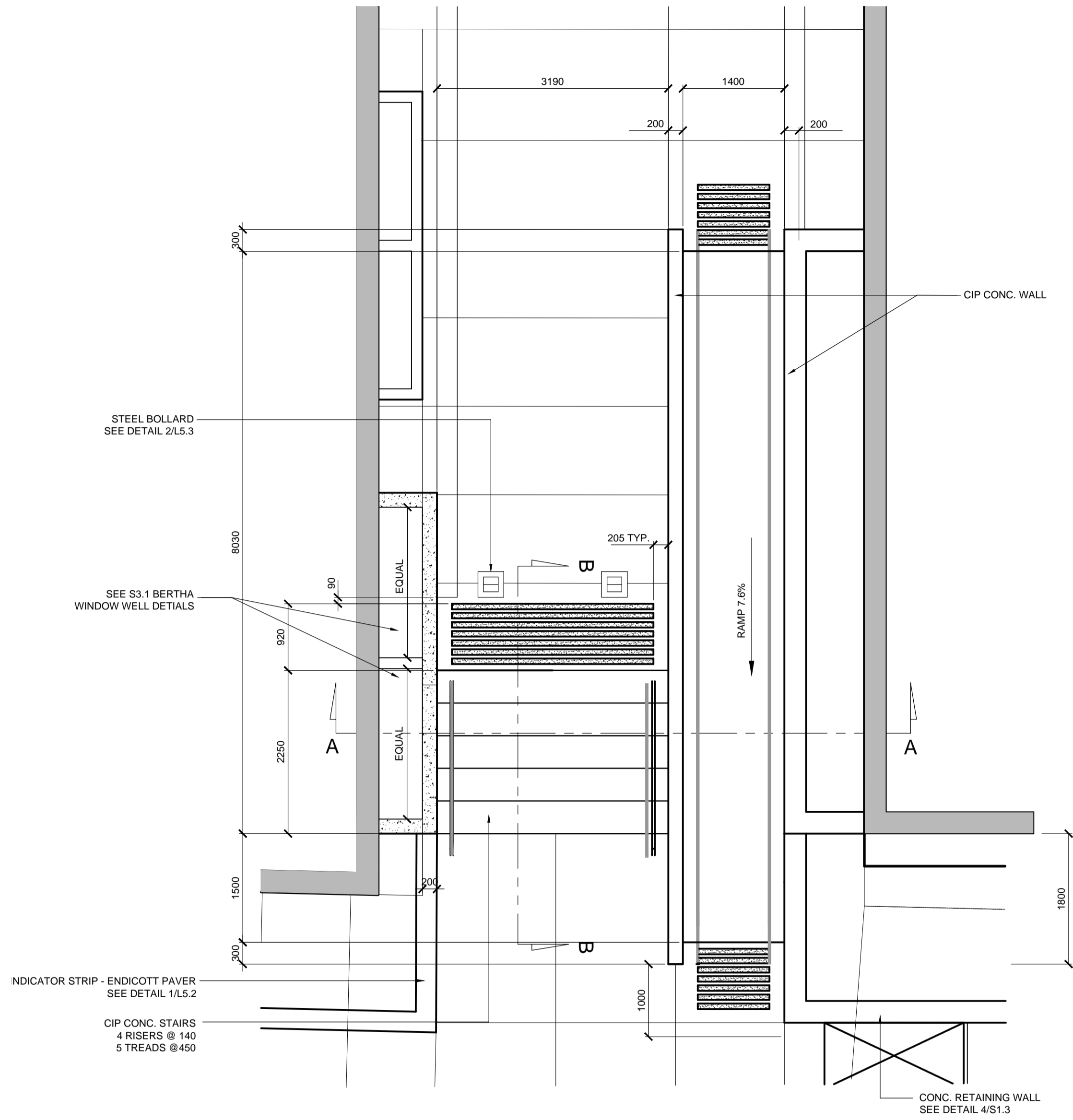
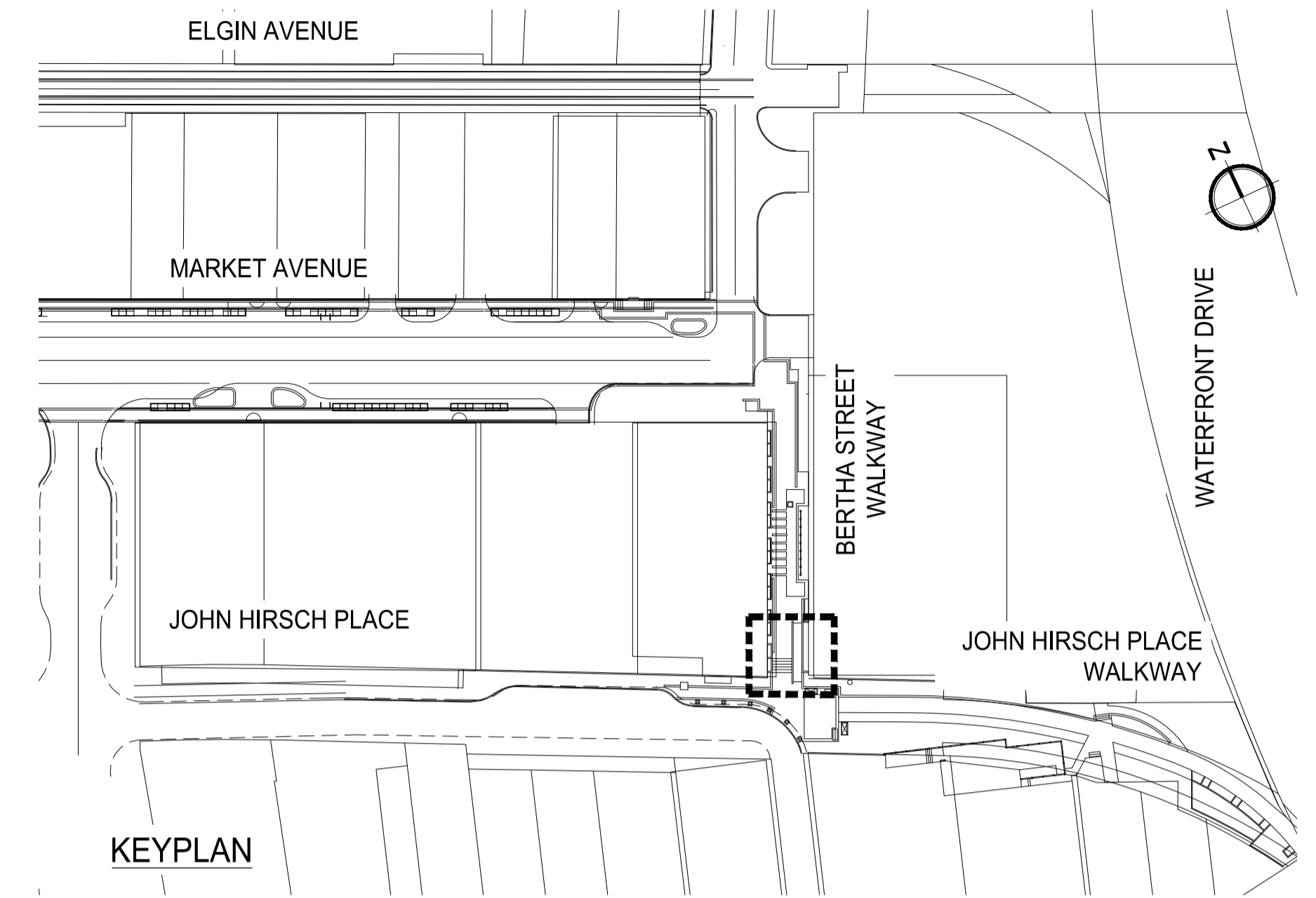


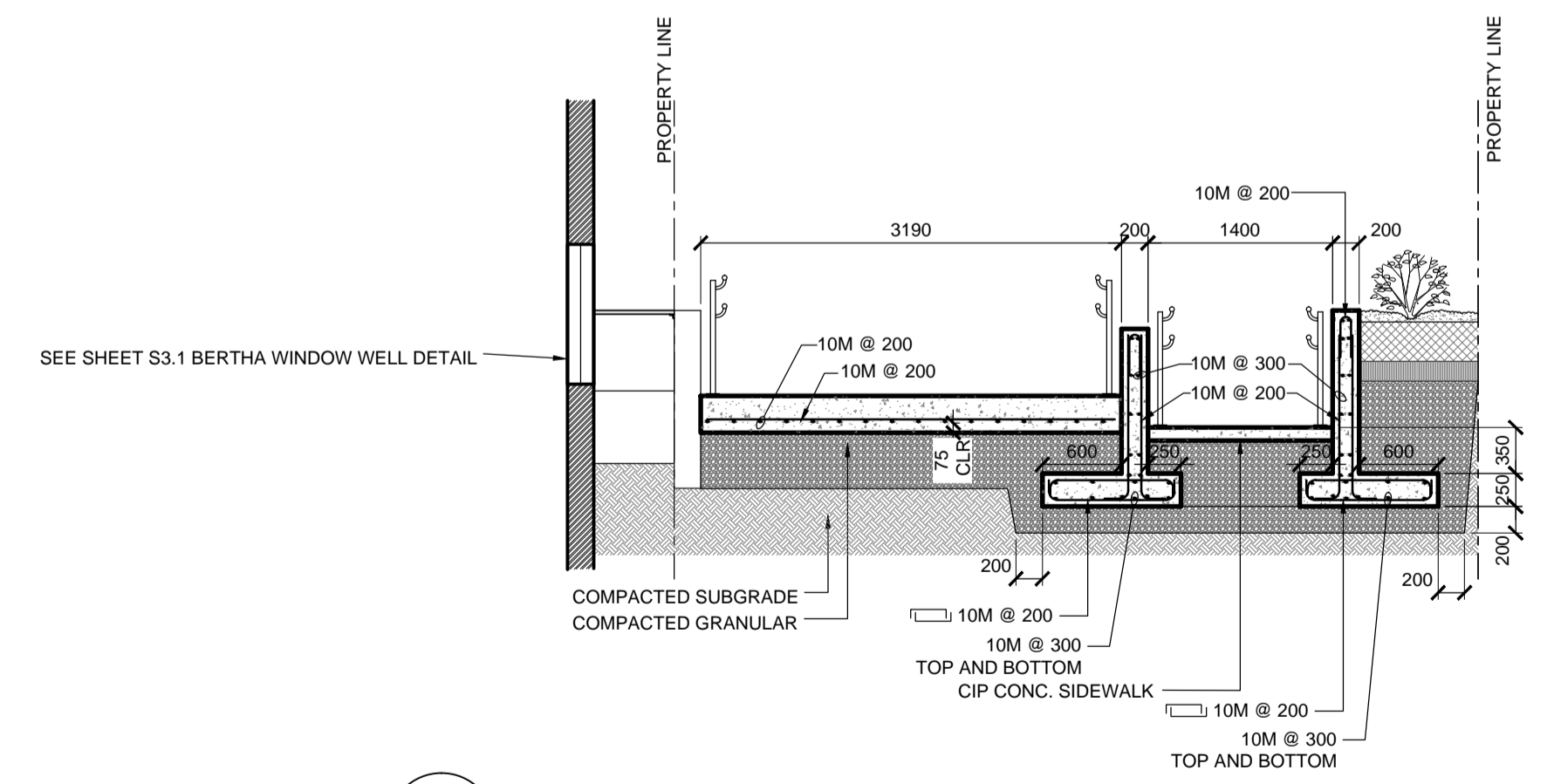
SEE SHEET S3.1 FOR GENERAL STRUCTURAL NOTES



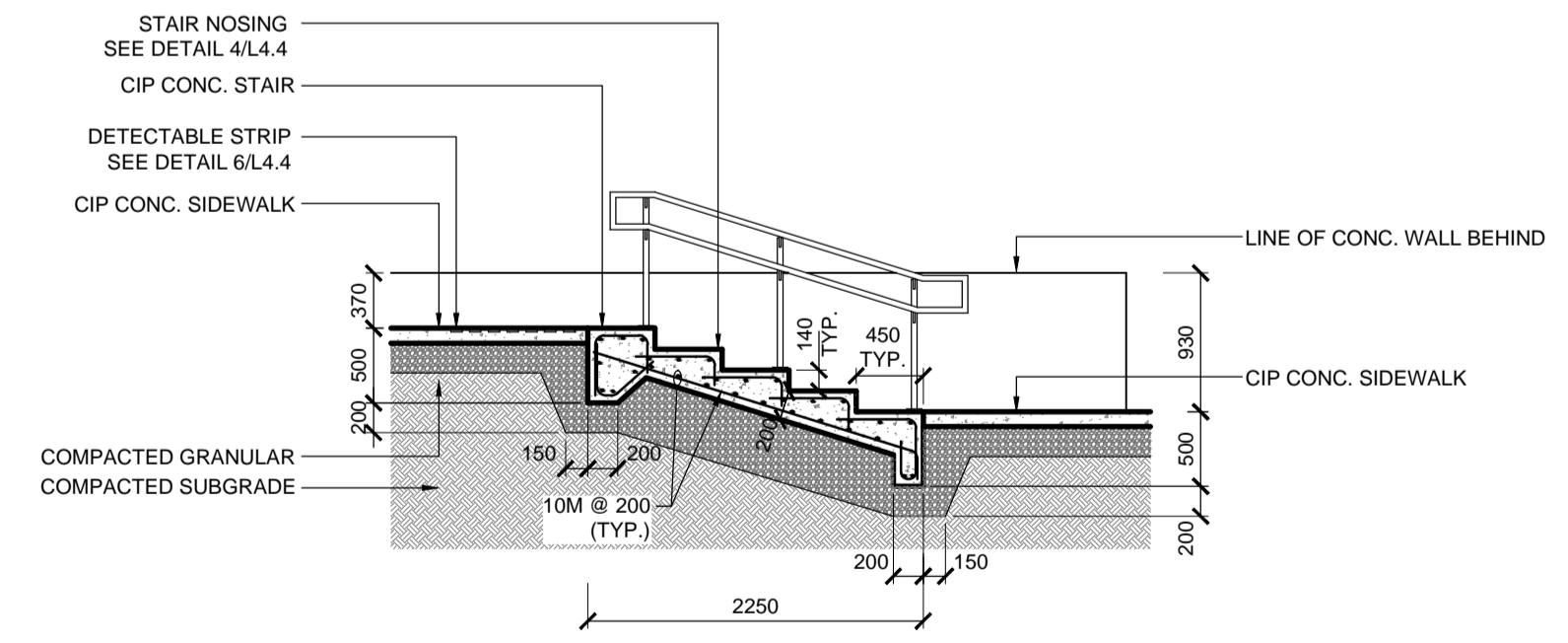
1 PLAN  
S1.2 SCALE 1:50



KEYPLAN



2 STAIR & RAMP - SECTION A-A  
S1.2 SCALE 1:50



3 STAIR - SECTION B-B  
S1.2 SCALE 1:50

METRIC  
WHOLE NUMBERS INDICATE MILLIMETRES  
DECIMALIZED NUMBERS INDICATE METRES

**APEGM**  
Certificate of Authorization  
MMM Group Limited  
No. 4531

Aug 15, 2014 - 12:48pm  
P:\3142001-5514099\3514099 - 2014 North East Exchange District Renewals\MM Drawings\S1.0\_A1.dwg - tab:Bertha Stair

NOTE:  
These design documents are prepared solely for the use by the party with whom the design professional has entered into a contract and there are no representations of any kind made by the design professional to any party with whom the design professional has not entered into a contract.

LOCATIONS APPROVED UNDERGROUND STRUCTURES			
SIGNED BY:	DATE	NO.	REVISIONS

G.B.M. -	ELEV. -

**MMM GROUP**

MM Group Limited.  
Suite 111 - 93 Lombard Ave.  
Winnipeg, MB R3B 3B1  
t. 204.943.3178  
f. 204.943.4948  
www.mmm.ca

DESIGNED BY: JH/MM	CHECKED BY: MM
DRAWN BY: JH/MS	APPROVED BY: WC

WORK SCALE: AS NOTED  
VERTICAL SCALE: AS NOTED

DATE: JUL 29/14

ENGINEER'S SEAL

PROVINCE OF MANITOBA  
M.H.A.  
M.ADY  
Member  
24972

CONSULTANT ACAD DWG. NO. S1.2

**THE CITY OF WINNIPEG**  
PUBLIC WORKS DEPARTMENT  
ENGINEERING SERVICES DIVISION

**Winnipeg**

CITY OF WINNIPEG  
NORTH EAST EXCHANGE DISTRICT ENGINEERING STUDY

BERTHA & JOHN HIRSCH STAIR & RAMP

CITY DRAWING NUMBER

BID NO. 742-2014