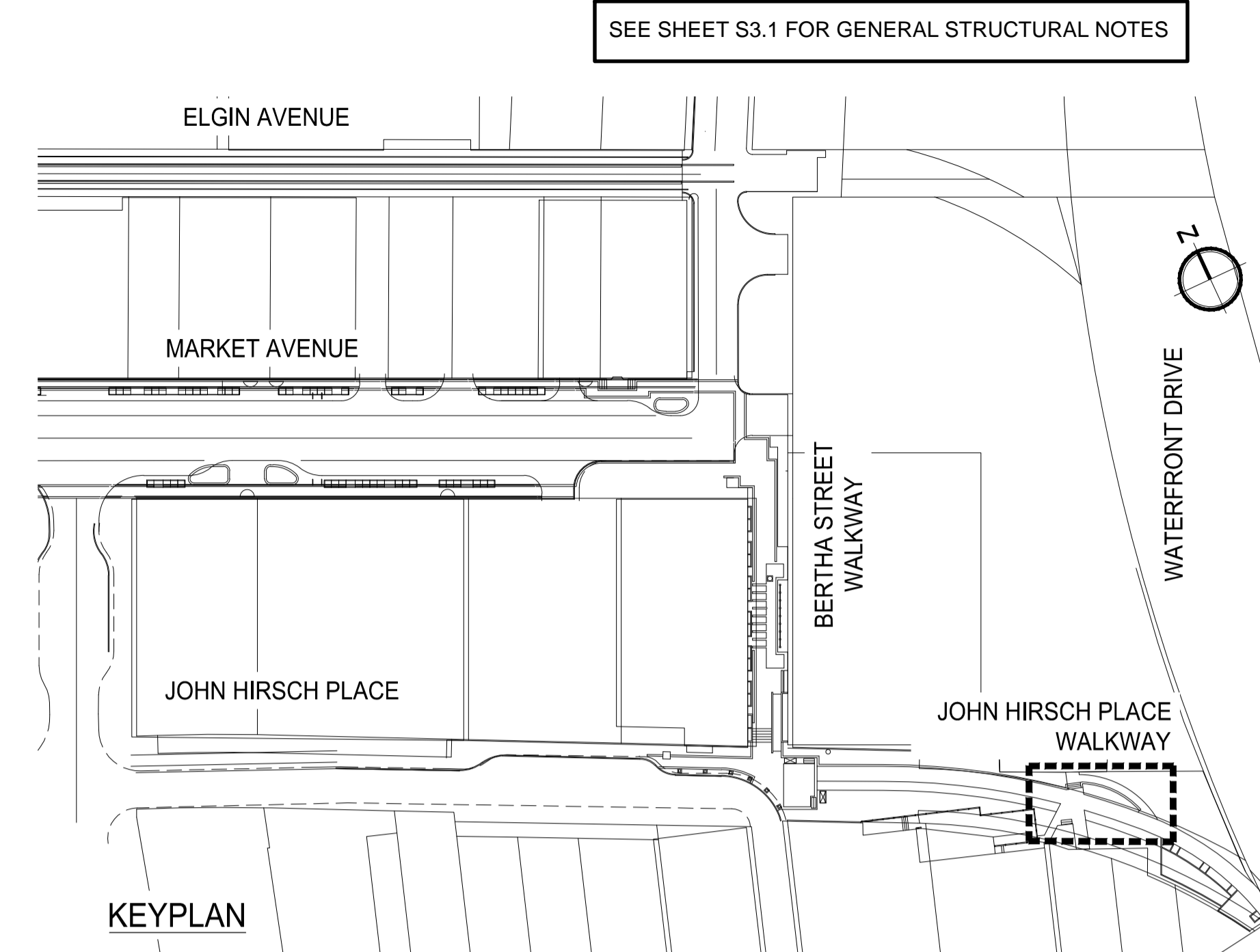
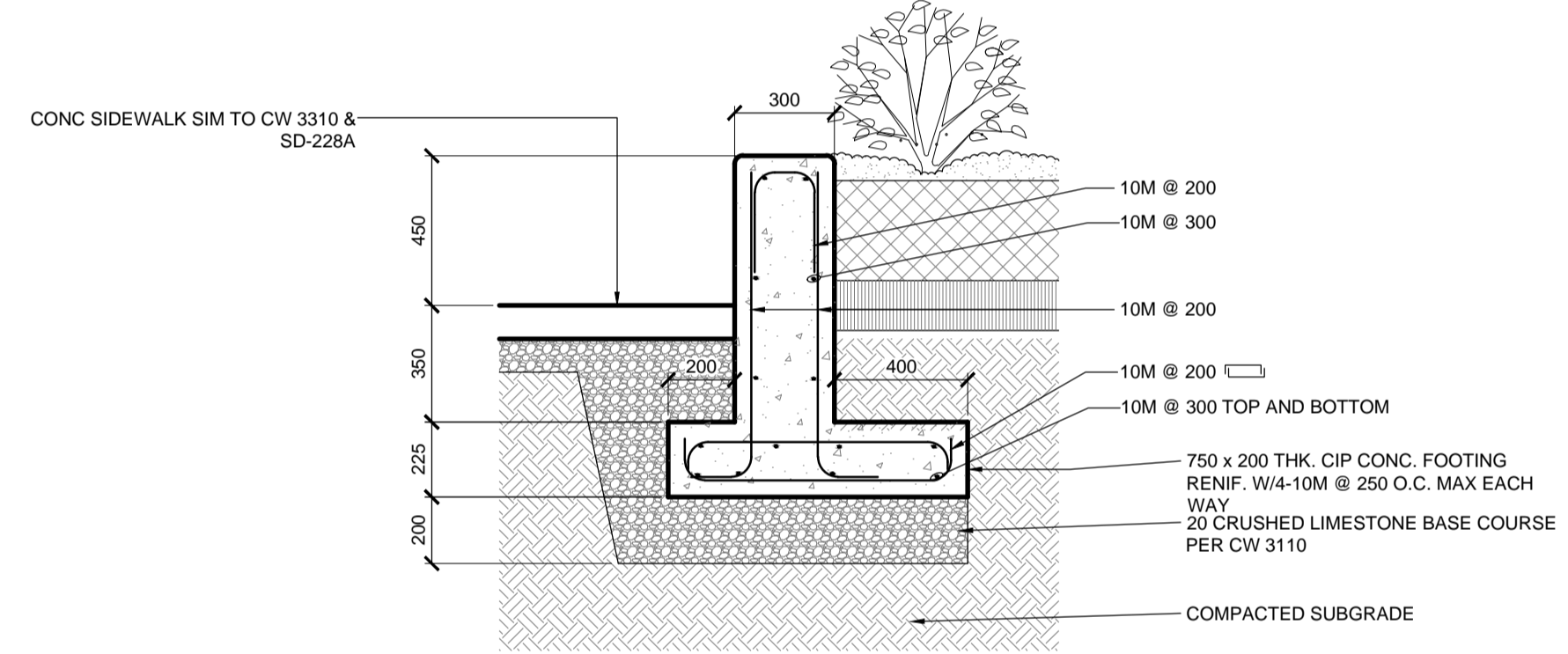


1 PLAN  
S1.3 SCALE 1:20

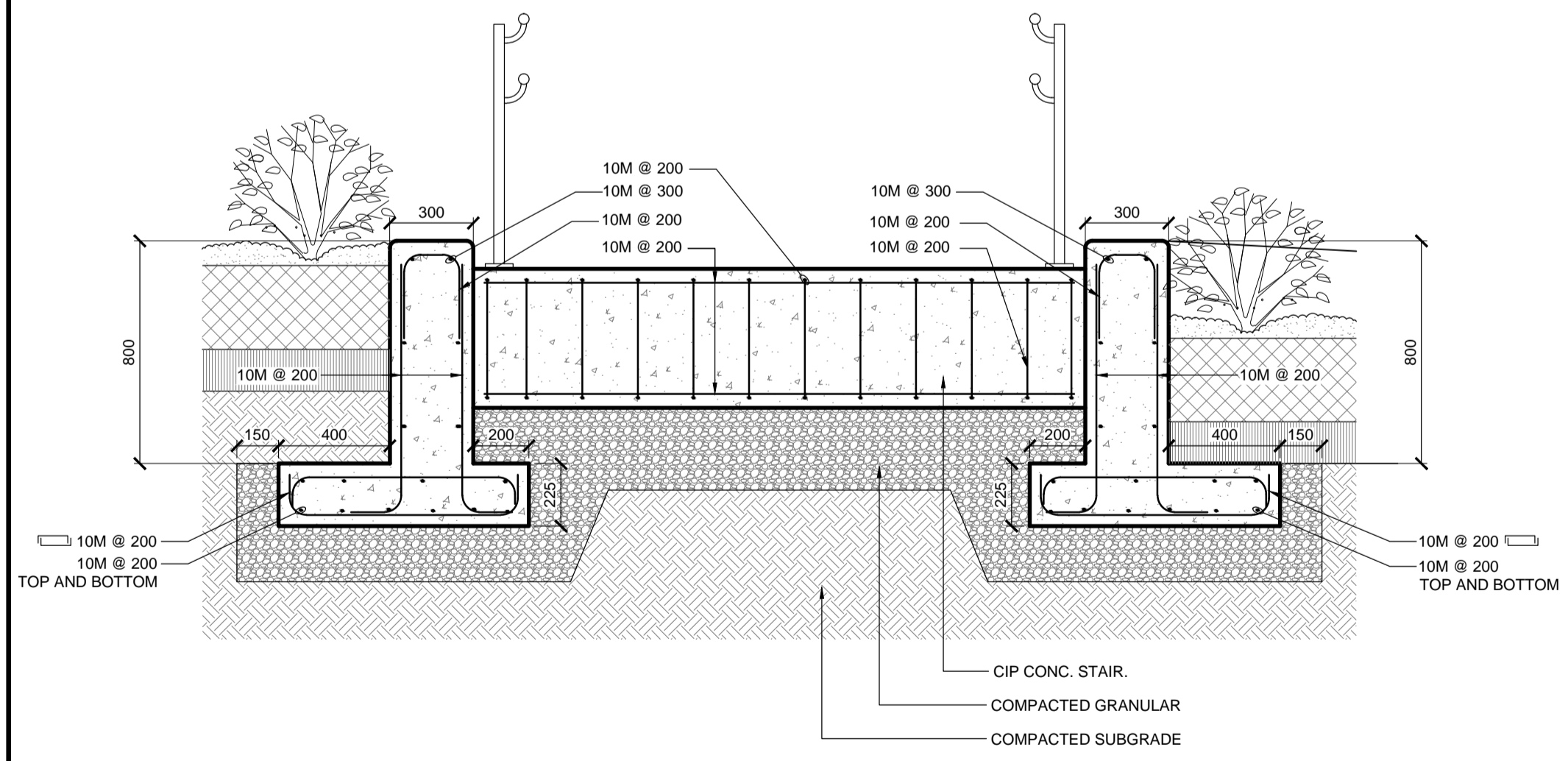


SEE SHEET S3.1 FOR GENERAL STRUCTURAL NOTES

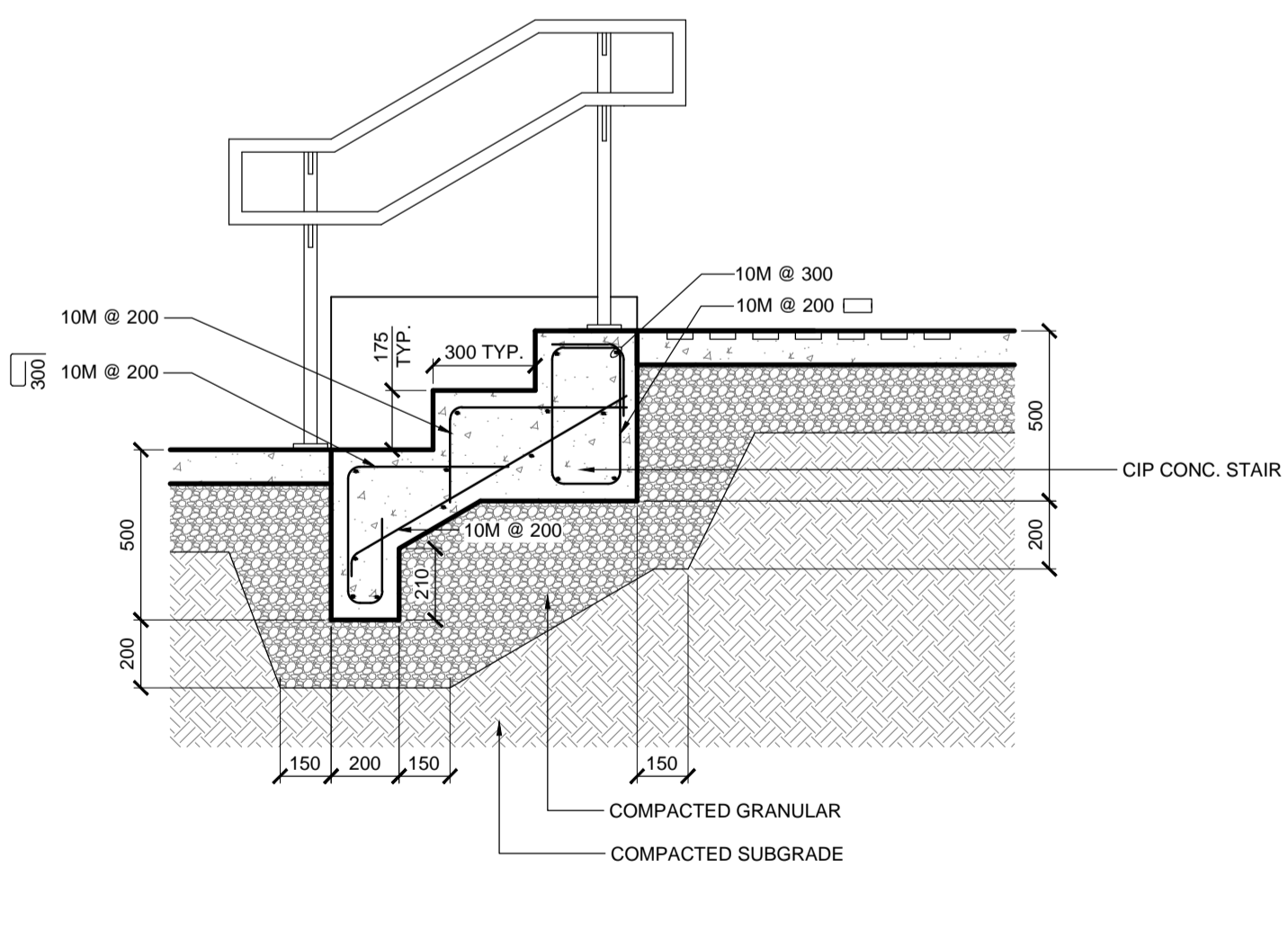
KEYPLAN



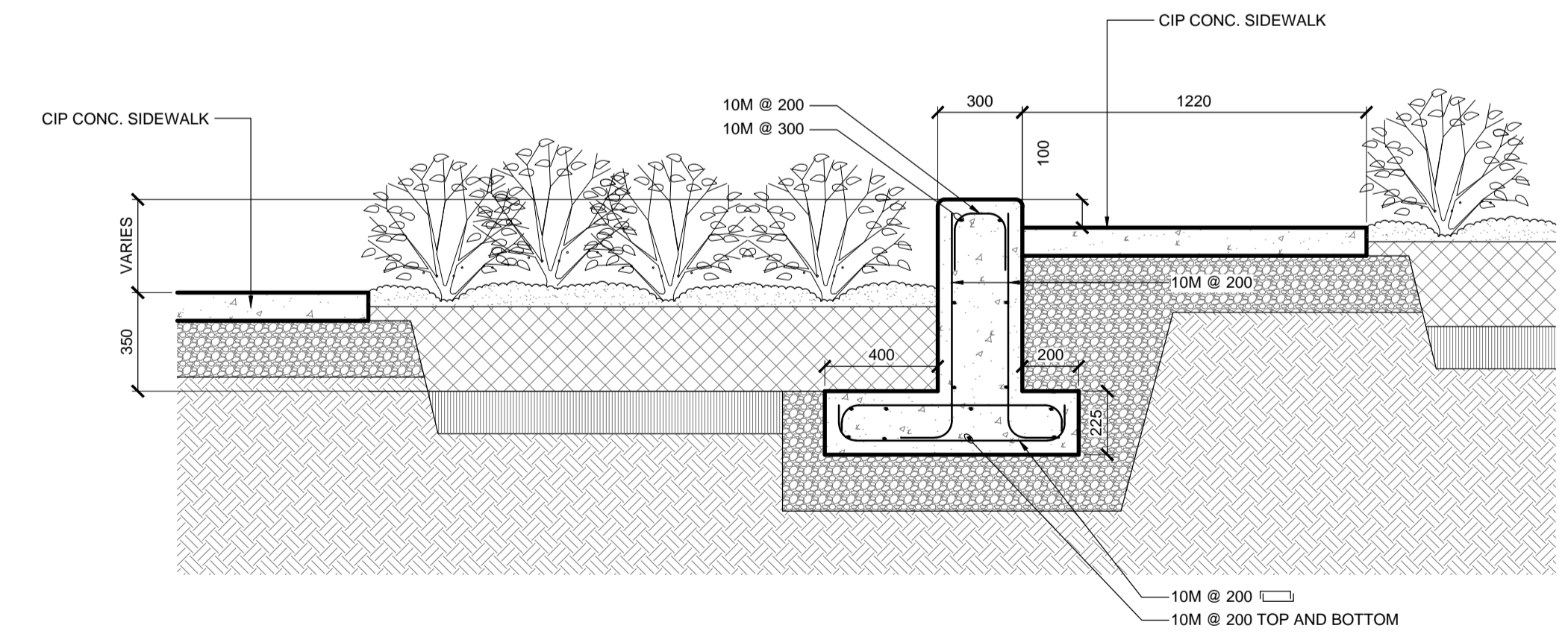
4 CONC. RETAINING WALL - SECTION D-D  
S3.1 SCALE 1:20



1 STAIR - SECTION A-A  
S1.3 SCALE 1:20



2 STAIR - SECTION B-B  
S1.3 SCALE 1:20



3 RAMP - SECTION C-C  
S1.3 SCALE 1:20

Aug 15, 2014 - 10:45am  
P:\3514\2014-5514099\5514099 - 2014 North East Exchange District Renewal\MM Drawings\S1.0\_A1.dwg - tab:John H Stair

NOTE:  
These design documents are prepared solely for the use by the party with whom the design professional has entered into a contract and there are no representations of any kind made by the design professional to any party with whom the design professional has not entered into a contract.

**METRIC**  
WHOLE NUMBERS INDICATE MILLIMETRES  
DECIMALIZED NUMBERS INDICATE METRES

**MM Group Limited**  
No. 4531

**LOCATIONS APPROVED UNDERGROUND STRUCTURES**

SIGNED BY:	DATE:
SUPV UG STRUCTURES	

LOCATION OF UNDERGROUND STRUCTURES AS SHOWN ARE BASED ON THE BEST INFORMATION AVAILABLE BUT NO GUARANTEE IS GIVEN THAT ALL EXISTING UTILITIES ARE SHOWN OR THAT THE GIVEN LOCATIONS ARE EXACT CONFIRMATION OF EXISTANCE AND EXACT LOCATION OF ALL SERVICES MUST BE OBTAINED FROM THE INDIVIDUAL UTILITIES BEFORE PROCEEDING

G.M. -	
ELEV. -	
DESIGNED BY	JH/MM
CHECKED BY	MM
DRAWN BY	JH/MS
APPROVED BY	MM
WORK SCALE	AS NOTED
VERTICAL	AS NOTED
RELEASED FOR CONSTRUCTION	
DATE	JUL 29/14

MM Group Limited.  
Suite 111 - 93 Lombard Ave.  
Winnipeg, MB R3B 3B1  
t. 204.943.3178  
f. 204.943.4948  
www.mmgroup.ca

ENGINEER'S SEAL

CONSULTANT ACAD DWG. NO.  
S1.3

**THE CITY OF WINNIPEG**  
PUBLIC WORKS DEPARTMENT  
ENGINEERING SERVICES DIVISION

**Winnipeg**

CITY OF WINNIPEG  
NORTH EAST EXCHANGE DISTRICT ENGINEERING STUDY

JOHN HIRSCH STAIR & RAMP

CITY DRAWING NUMBER

BID NO.  
742-2014