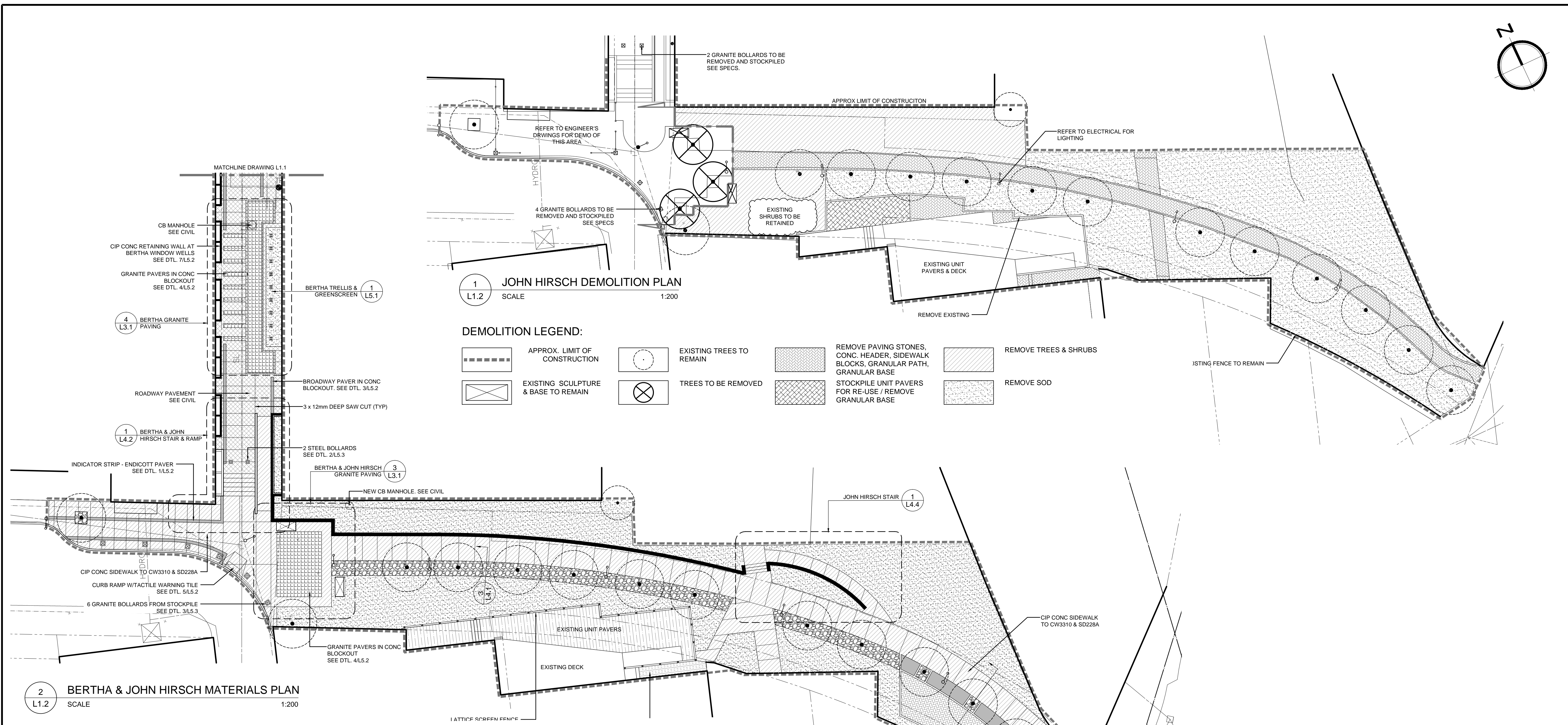


Aug 05, 2014 - 10:03am
\\gar\host\Volumes\HTFC-FILE_SERVER\2014\14-049 East Exchange Implementation\ACAD\14-049 LAYOUT.dwg -tab:L1.2



GENERAL NOTES

- REFER TO ENGINEER'S DRAWINGS FOR DEMOLITION, LAYOUT AND GRADING INFORMATION.
- ALL UTILITIES ARE SHOWN AS INFORMATION ONLY. CONTRACTOR TO CONFIRM LOCATION OF ALL UTILITIES ON SITE PRIOR TO CONSTRUCTION.
- CONTRACTOR SHALL PROVIDE QUALIFIED CREW TO LAYOUT STREETSCAPING ELEMENTS. THE CREW SHALL BE EQUIPPED WITH ALL THE NECESSARY EQUIPMENT TO PROVIDE HORIZONTAL AND VERTICAL LAYOUT IN ACCORDANCE WITH THE DAWINGS AND SPECIFICATIONS.
- CONTRACTOR TO STAKE OUT LOCATION OF ALL WORKS FOR APPROVAL BY CONTRACT ADMINISTRATOR PRIOR TO ANY REMOVALS OR CONSTRUCTION.
- CONTRACTOR SHALL CONFIRM ALL DIMENSIONS ON SITE AND REPORT ANY DISCREPANCIES TO THE CONTRACT ADMINISTRATOR PRIOR TO CONSTRUCTION.
- DURING CONSTRUCTION CONTRACTOR TO PROTECT TO CITY OF WINNIPEG STANDARDS ALL EXISTING TREES, SIDEWALKS, CURBS, UTILITIES AND PAVING TO REMAIN. AREAS DAMAGED DURING CONSTRUCTION TO BE REPAIRED TO CITY OF WINNIPEG STANDARDS AT NO COST TO THE CITY.
- CONTRACTOR IS RESPONSIBLE FOR ALL REMOVALS AS REQUIRED TO CONSTRUCT ALL WORKS AS SHOWN ON THE DRAWINGS. ALL ITEMS TO BE REMOVED MUST BE DISPOSED OF LEGALLY OFF SITE. ALL ITEMS DESIGNATED FOR RE-USE SHALL BE CAREFULLY REMOVED AND STOCKPILED IN A PROTECTED PLACE - SEE SPECIFICATIONS.
- ALL WORK TO BE DONE IN ACCORDANCE WITH CITY OF WINNIPEG STANDARD CONSTRUCTION SPECIFICATIONS UNLESS OTHERWISE INDICATED.

MATERIALS LEGEND:

	APPROX. LIMIT OF CONSTRUCTION		UNIT PAVERS IN CONC BLOCKOUT (SEE DTL. 3/L5.2)		STOCKPILED GRANITE PAVERS IN CONC BLOCKOUT (SEE DTL. 5/L5.2)		BENCH (SEE DTL. 4/L5.3)		EXISTING TREES TO BE RETAINED & PRUNED
	CIP CONCRETE CURB -SEE CIVIL		CIP CONC RETAINING WALL (SEE DTL. 6/L5.2)		EXISTING UNIT PAVERS TO BE RETAINED		EXISTING STONE SCULPTURE & BASE (TO REMAIN)		EXISTING LIGHT STANDARD
	CIP CONC SIDEWALK SIM TO CW3310 & SD228A		STAINED PAVEMENT SEE SPECS.		UNIT PAVERS FROM STOCKPILE TO CW3330		PLANTING BED (SEE DWG. L2.1)		EXISTING LIGHT STANDARD
	INDICATOR STRIP (SEE DTL. 1/L5.2)		BLACK GRANITE MULCH (SEE DTL. 1/L4.1)		LATTICE SCREEN FENCE (SEE DTL. 1/L5.3)		EXISTING LIGHT STANDARD		EXISTING LIGHT STANDARD

WATERMAIN	ANCHOR		
LAND DRAINAGE SEWER	CIVIC ADDRESS		
WASTE WATER SEWER	IRON BAR		
HYDRO	LIGHT STANDARD		
M.T.S.	HYDRO POLE		
GAS	CURB RAMP		
SIGNALS	EDGE OF SIDEWALK		
MANHOLE	PROPERTY LINE		
CATCH BASIN	EDGE OF PAVEMENT		
CURB INLET	MODIFIED BARRIER CURB		
UTILITIES ADJUSTED	BARRIER CURB		
PLUG	BARRIER CURB & GUTTER		
HYDRANT	EDGE OF CONCRETE		
VALVE	EDGE OF GRAVEL		
CURB STOP	SIDEWALK		
GROUND GRADE	CONCRETE		
PAVEMENT GRADE	ASPHALT		
LOT GRADE	ASPHALT OVERLAY		
EXISTING	LEGEND-PLAN	PROPOSED	EXISTING
LEGEND-PLAN	LEGEND-PLAN	PROPOSED	EXISTING

LOCATIONS APPROVED UNDERGROUND STRUCTURES	
SIGNED BY:	DATE
SUPV U/G STRUCTURES	
LOCATION OF UNDERGROUND STRUCTURES AS SHOWN ARE BASED ON THE BEST INFORMATION AVAILABLE BUT NO GUARANTEE IS GIVEN THAT ALL EXISTING UTILITIES ARE SHOWN OR THAT THE GIVEN LOCATIONS ARE EXACT CONFIRMATION OF EXISTANCE AND EXACT LOCATION OF ALL SERVICES MUST BE OBTAINED FROM THE INDIVIDUAL UTILITIES BEFORE PROCEEDINGS	

G.B.M. ELEV.			
F			
E			
D			
C			
B	ISSUED FOR TENDER	7/8/14	J
A	ISSUED FOR 66% REVIEW	27/6/14	J
NO.	REVISIONS	DATE	BY

DESIGNED BY	JH	CHECKED BY	GM
DRAWN BY	JH	APPROVED BY	GM
HOR. SCALE	AS NOTED	RELEASED FOR CONSTRUCTION	
VERTICAL	AS NOTED		
DATE	AUG 7, 2014	DATE	

ENGINEER'S SEAL	
CONSULTANT ACAD DWG. NO.	L1.2

THE CITY OF WINNIPEG PUBLIC WORKS DEPARTMENT ENGINEERING SERVICES DIVISION	CITY DRAWING NUMBER
JOHN HIRSCH DEMOLITION PLAN / BERTHA & JOHN HIRSCH MATERIALS PLAN	SHEET 2 OF 11
	BID NO. 742-2014