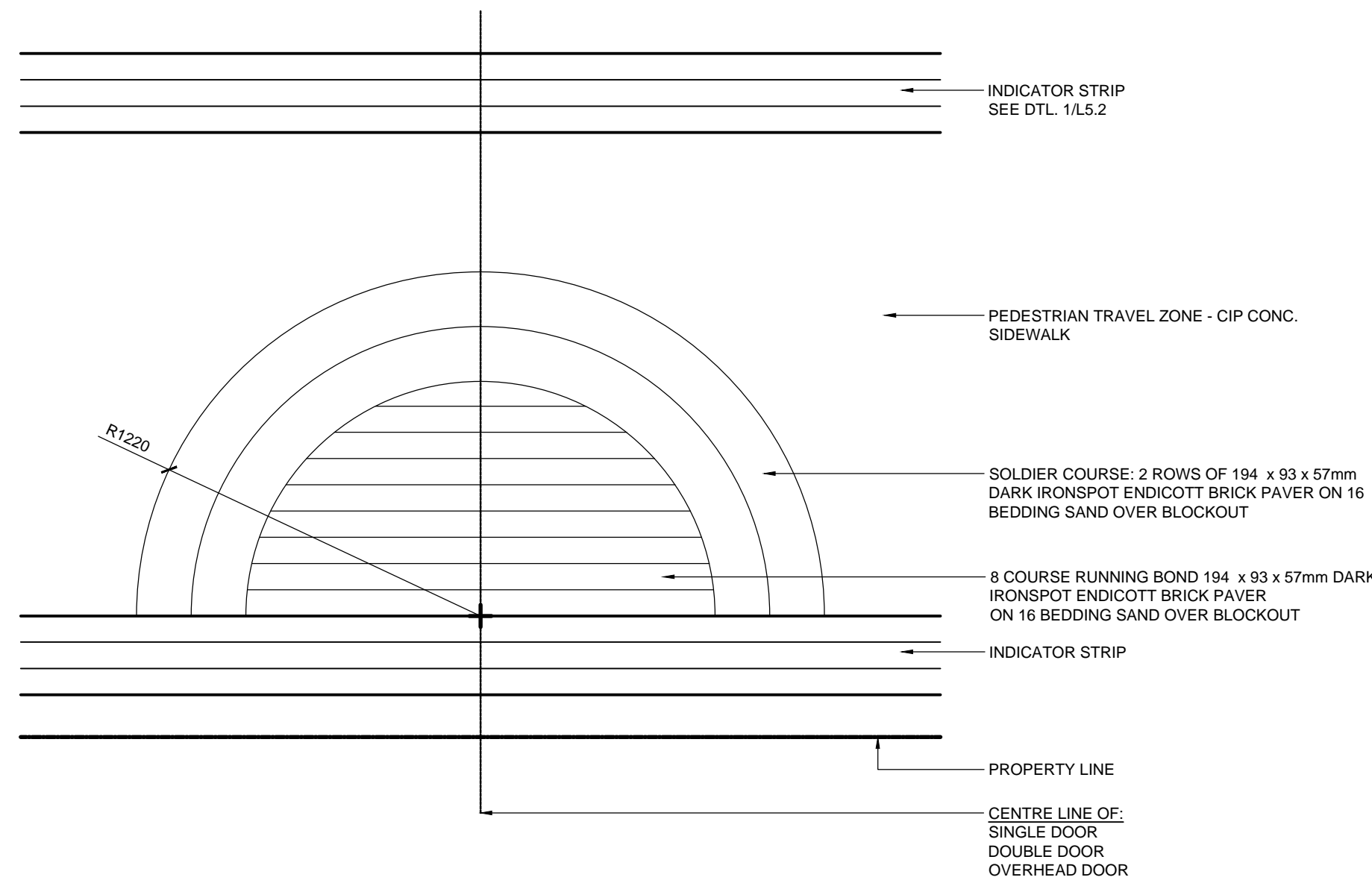
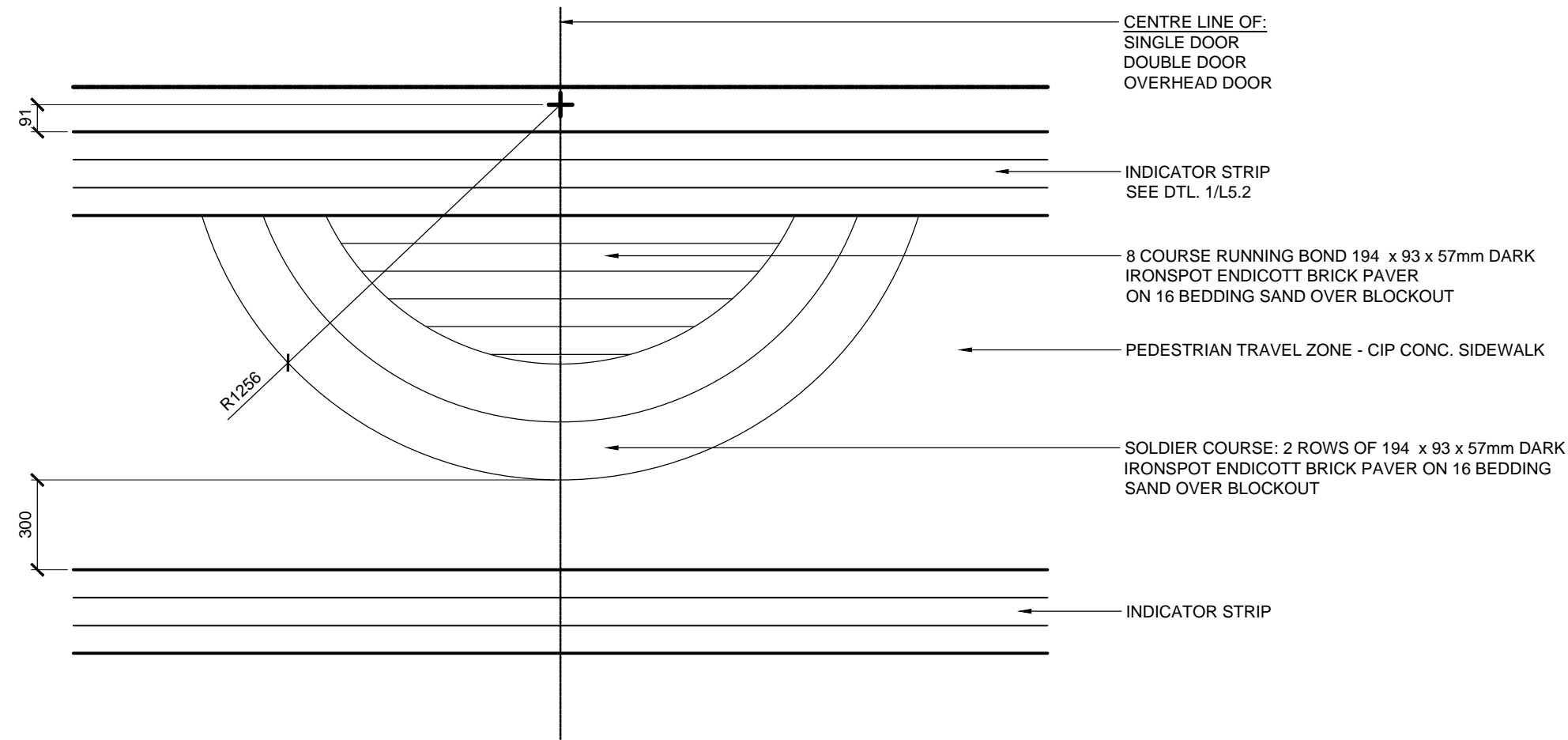


Aug 05, 2014 - 10:44am  
\\ps1\host\Volumes\HTFC\_SERVER\2014\14-049 East Exchange Implementation\ACAD Details\14-049 Sections Details.dwg -tbl.L3.1

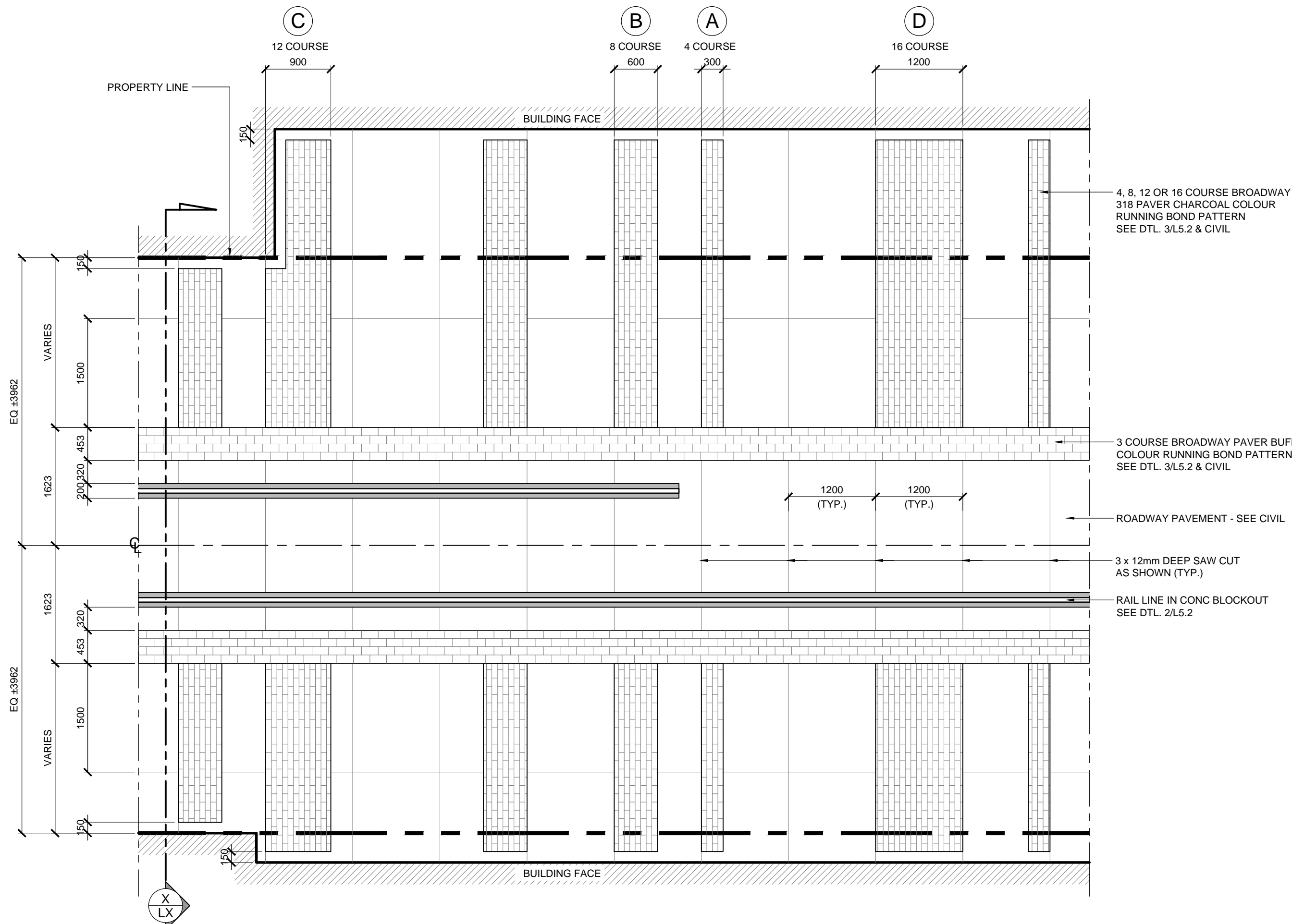


**SOUTH SIDE**

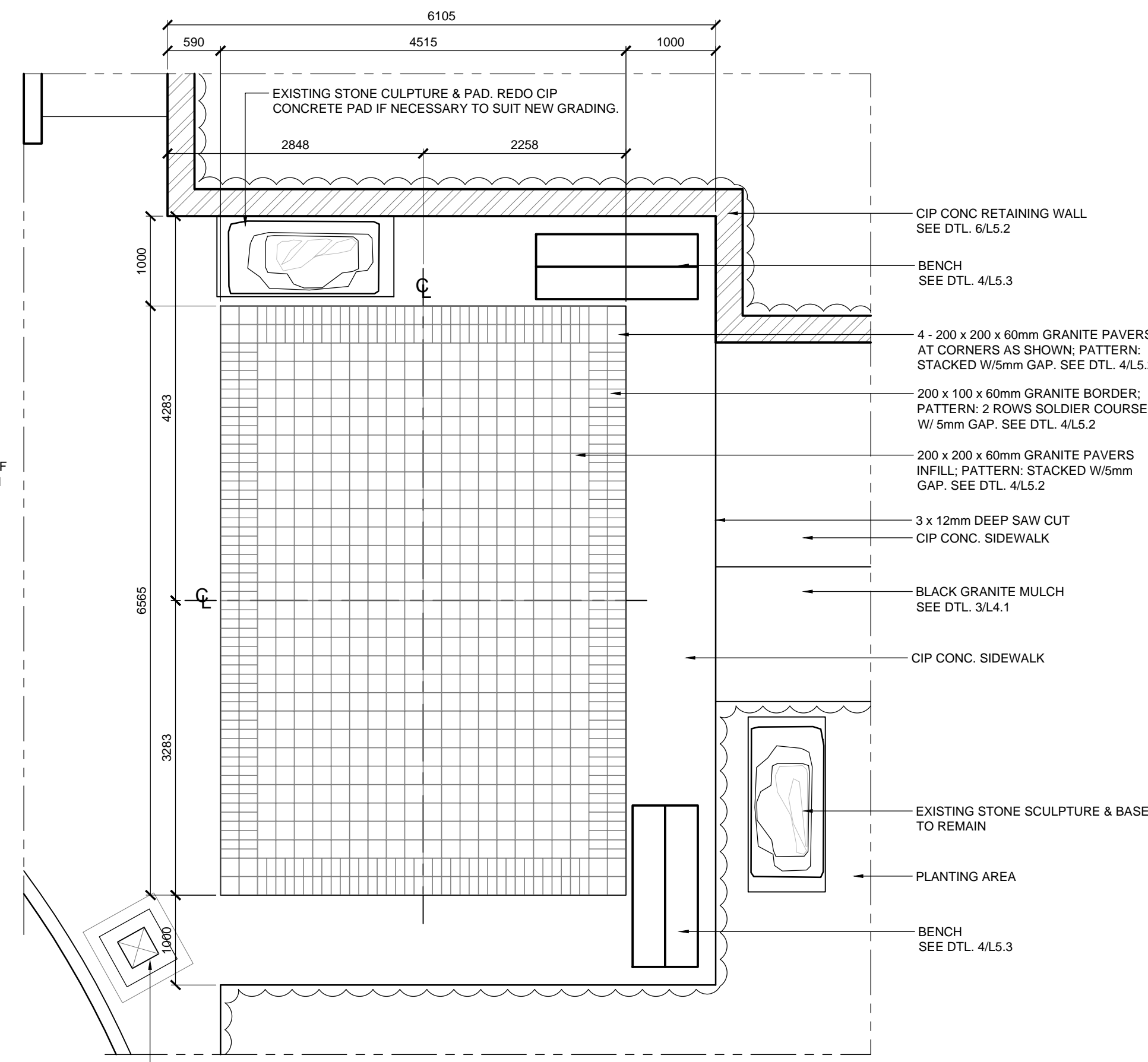
**1 ENTRY PAVING**  
SCALE 1:20



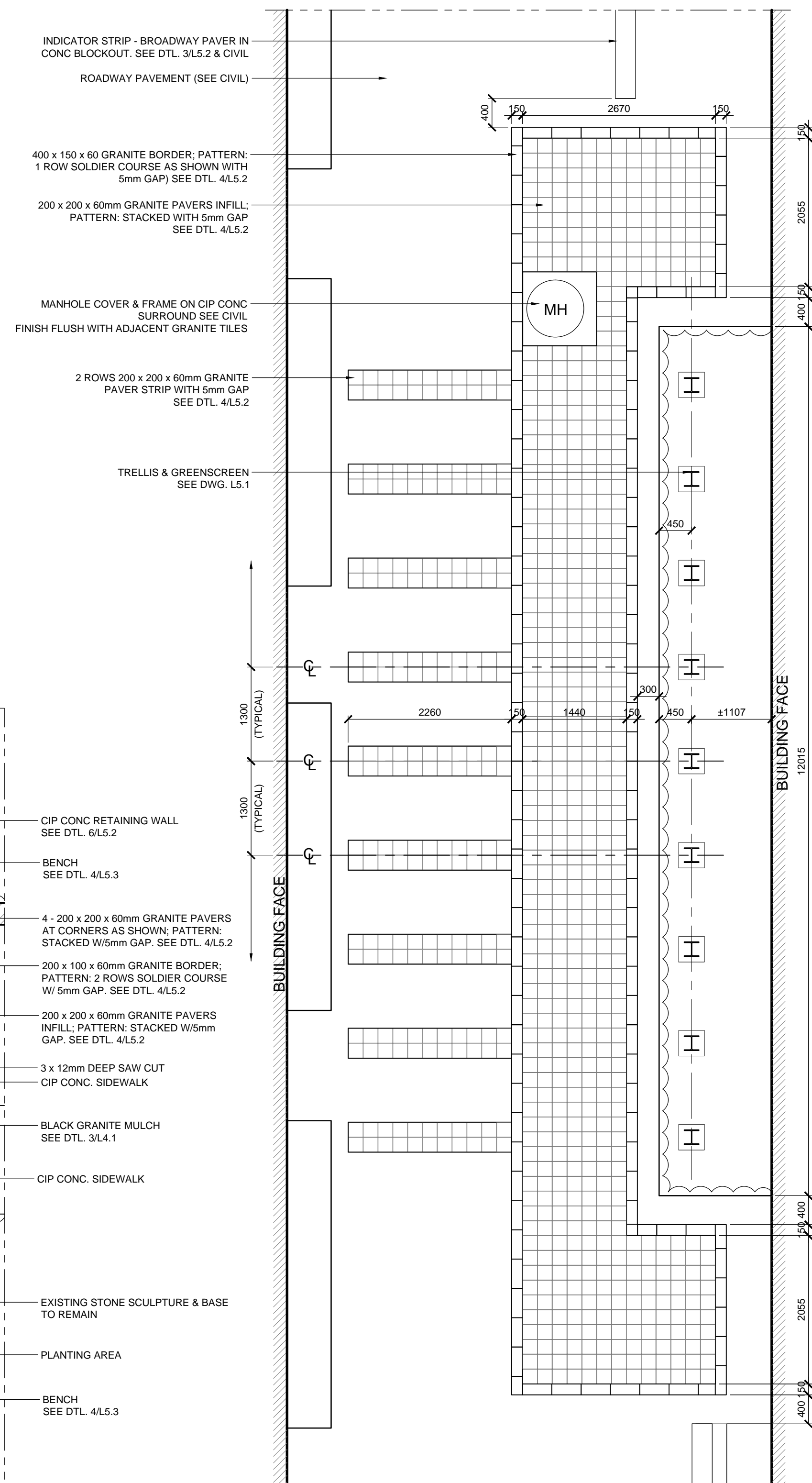
**NORTH SIDE**



**2 ELGIN PAVING**  
SCALE 1:50



**3 BERTHA & JOHN HIRSCH GRANITE PAVING**  
SCALE 1:50



**4 BERTHA GRANITE PAVING**  
SCALE 1:50

**LOCATIONS APPROVED  
UNDERGROUND STRUCTURES**

SIGNED BY: \_\_\_\_\_ DATE: \_\_\_\_\_  
SUPV U/G STRUCTURES

LOCATION OF UNDERGROUND STRUCTURES AS SHOWN ARE BASED ON THE BEST INFORMATION AVAILABLE BUT NO GUARANTEE IS GIVEN THAT ALL EXISTING UTILITIES ARE SHOWN OR THAT THE GIVEN LOCATIONS ARE EXACT CONFIRMATION OF EXISTENCE AND EXACT LOCATION OF ALL SERVICES MUST BE OBTAINED FROM THE INDIVIDUAL UTILITIES BEFORE PROCEEDING

G.B.M.	ELEV.				
F					
E					
D					
C					
B	ISSUED FOR TENDER	7/8/14	JH		
A	ISSUED FOR 66% REVIEW	27/6/14	JH		
NO.	REVISIONS	DATE	BY	DATE	

<b>HTFC</b> PLANNING & DESIGN 300-115 Burnside Avenue East, Winnipeg, MB R2B 0R5 Tel: 204-944-9900	
DESIGNED BY: JH	CHECKED BY: GM
DRAWN BY: JH	APPROVED BY: GM
HOR. SCALE: AS NOTED	RELEASED FOR CONSTRUCTION
VERTICAL: AS NOTED	
DATE: AUG 7, 2014	DATE:

ENGINEER'S SEAL
CONSULTANT ACAD. DWG. NO. L3.1

<b>THE CITY OF WINNIPEG</b> PUBLIC WORKS DEPARTMENT ENGINEERING SERVICES DIVISION	
CITY OF WINNIPEG	
PAVING PATTERN DETAILS	
CITY DRAWING NUMBER	
SHEET 4 OF 11	
BID NO. 742-2014	