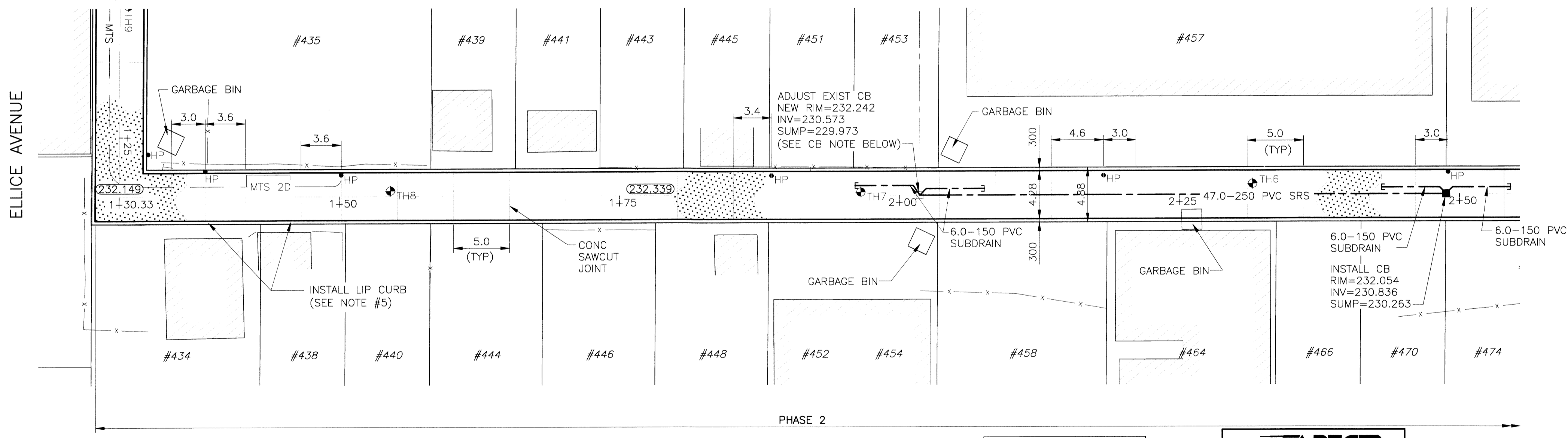
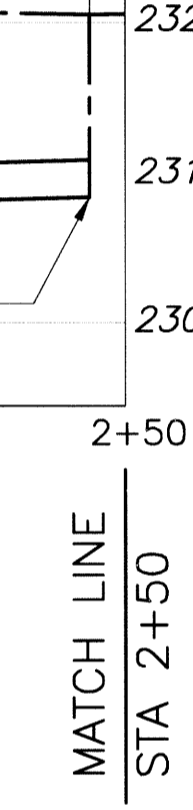
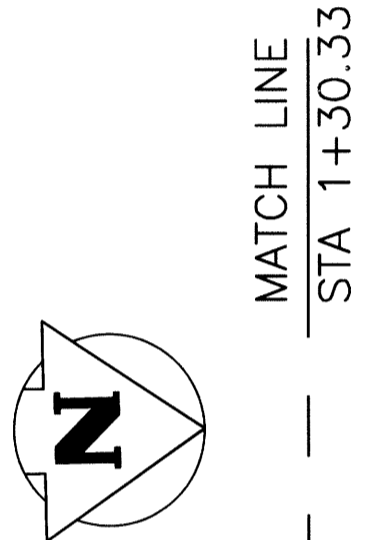
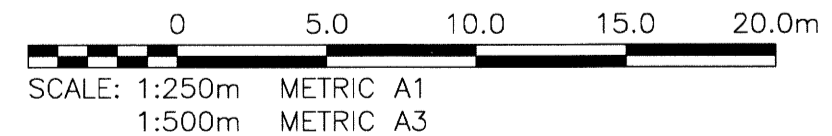
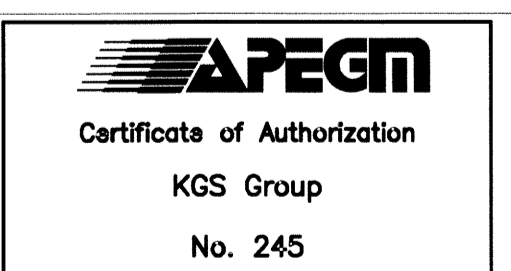


- NOTES:**
- STATION CHAINAGE IS BASED ON CENTERLINE OF ALLEY RIGHT OF WAY.
  - ADJUST MH AND CB RIMS TO NEW GRADES.
  - PLUG SUB-DRAINS AT TERMINAL ENDS.
  - REGRADE EXISTING PRIVATE SIDEWALKS AS REQUIRED.
  - INSTALLATION OF LIP CURBS AND THEIR EXTENTS TO BE DETERMINED BY THE CONTRACT ADMINISTRATOR.
  - LIGHT STANDARDS, HYDRO POLES AND ANCHORS MAY REQUIRE TEMPORARY SUPPORT/REMOVAL OR REPLACEMENT AT THE CONTRACTOR'S EXPENSE.
  - ISOLATE ALL POLES, BASES AND PILES WITHIN ALLEY RIGHT OF WAY (SD-228C)
  - AVOID DAMAGE TO EXISTING TREES WITHIN THE LIMITS OF CONSTRUCTION
  - CITY OF WINNIPEG SURVEY MONUMENTS EXIST ON THIS SITE. CONTRACTOR TO CONTACT THE CITY OF WINNIPEG GEOMATICS BRANCH 5 WORKING DAYS IN ADVANCE OF CONSTRUCTION TO COORDINATE MONUMENT PROTECTION SERVICES (204-918-1360)
  - ALLEY TO BE CONSTRUCTED IN PHASES AS SHOWN



**CB NOTE:**  
EXISTING CB TO ACT AS MANHOLE FOR NEW CB LOCATED AT STA 2+48.81



**WARNING**  
NOTIFY THE GAS COMPANY OF THE PROPOSED LOCATION OF EXCAVATION. TAKE PRECAUTION TO AVOID DAMAGE TO GAS COMPANY INSTALLATIONS. SEE PROVINCIAL REGULATION 210/72 FOR DETAILS.

**METRIC**  
WHOLE NUMBERS INDICATE MILLIMETRES  
DECIMALIZED NUMBERS INDICATE METRES

**PROPERTY LIMITS DELINEATION**  
DELINEATION OF PROPERTY LIMITS AS SHOWN ON THIS DWG DOES NOT REPRESENT A "LEGAL SURVEY". KGS GROUP MAKES NO REPRESENTATION OR WARRANTY AS TO THE ACCURACY OF PROPERTY LIMITS DELINEATED ON THIS DWG, NOR ON THE DIMENSIONAL ACCURACY OF DWG FEATURES RELATIVE TO THOSE PROPERTY LIMITS.

300 L/S	LAND DRAINAGE SEWER	300 L/S	TEST HOLE				
250 WWS	WASTE WATER SEWER	250 WWS	GUY WIRE				
	GAS		LIGHT STANDARD				
	HYDRO		BACK OF CURB				
	M.T.S.		CONCRETE				
150 WM	WATERMAIN	150 WM	ASPHALT				
	HYDRANT		SIDEWALK				
	VALVE		PROPERTY LINE				
	MANHOLE		SURVEY BAR				
	CATCH BASIN		GEODETIC BENCHMARK				
	CURB INLET		ELEVATION				
	POLES						
EXISTING	LEGEND-PLAN	PROPOSED	EXISTING	LEGEND-PLAN	PROPOSED	EXISTING	LEGEND-PROFILE

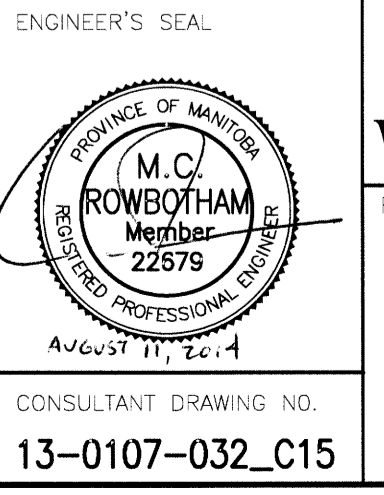
**LOCATION APPROVED UNDERGROUND STRUCTURES**

Supv. U/G STRUCTURES COMMITTEE DATE

**NOTE:**  
LOCATION OF UNDERGROUND STRUCTURES AS SHOWN ARE BASED ON THE BEST INFORMATION AVAILABLE BUT NO GUARANTEE IS GIVEN THAT ALL EXISTING UTILITIES ARE SHOWN OR THAT THE GIVEN LOCATIONS ARE EXACT. CONFIRMATION OF EXISTENCE AND EXACT LOCATION OF ALL SERVICES MUST BE OBTAINED FROM THE INDIVIDUAL UTILITIES BEFORE PROCEEDING WITH CONSTRUCTION.

B.M. 37-020	ELEV. 232.298	S.E. Cor. Sargent Ave. & Spence St., Tbt. in N. Conc. Foundation No. 486 Sargent Ave., 0.5m E. & 0.1m below brick of N.W. Cor. of Bldg.
1	RE-ISSUED FOR TENDER	14/08/08 CR
0	ISSUED FOR TENDER	14/07/25 CR
NO.	REVISIONS	DATE BY

<b>KGS GROUP</b> CONSULTING ENGINEERS	DESIGNED BY: RBO	CHECKED BY: CR
	DRAWN BY: GEL/DMW	APPROVED BY:
	HOR. SCALE: 1:250	RELEASED FOR CONSTRUCTION:
	VERTICAL: 1:50	DATE:
	DATE: 14/05/02	DATE:



**THE CITY OF WINNIPEG**  
PUBLIC WORKS DEPARTMENT  
TRANSPORTATION ENGINEERING DIVISION

PROJECT TITLE: **2014 ALLEY RENEWAL PROGRAM CONTRACT 2**  
YOUNG ST/SPENCE ST  
ELLICE AVE TO SARGENT AVE  
1+30.33 TO STA 2+50

SHEET **15** OF **17**  
COMPUTER FILE NAME: **13-0107-032\_CALL**  
CITY DRAWING NUMBER: **0015**

CONSULTANT DRAWING NO.: **13-0107-032\_C15**

P:\PROJECTS\2014\13-0107-032\CONSTRUCTION\CONTRACTS\DWG\13-0107-032\_CALL\_15.dwg - 140514 10:13:41 AM BY: GEL/DMW