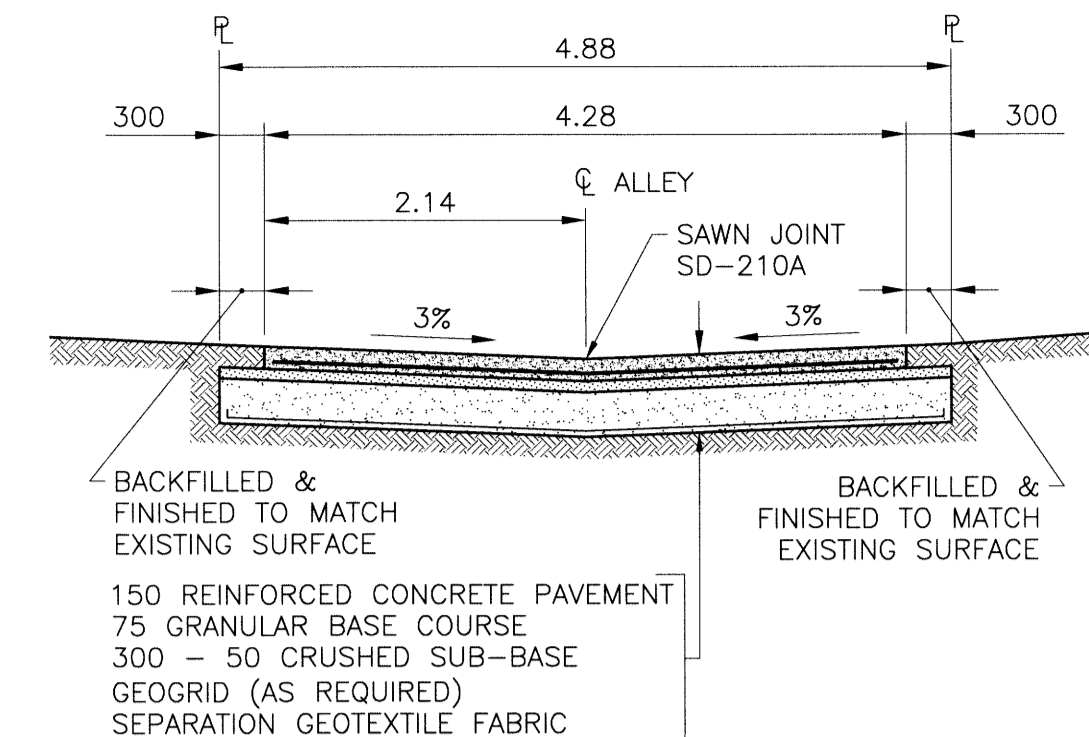


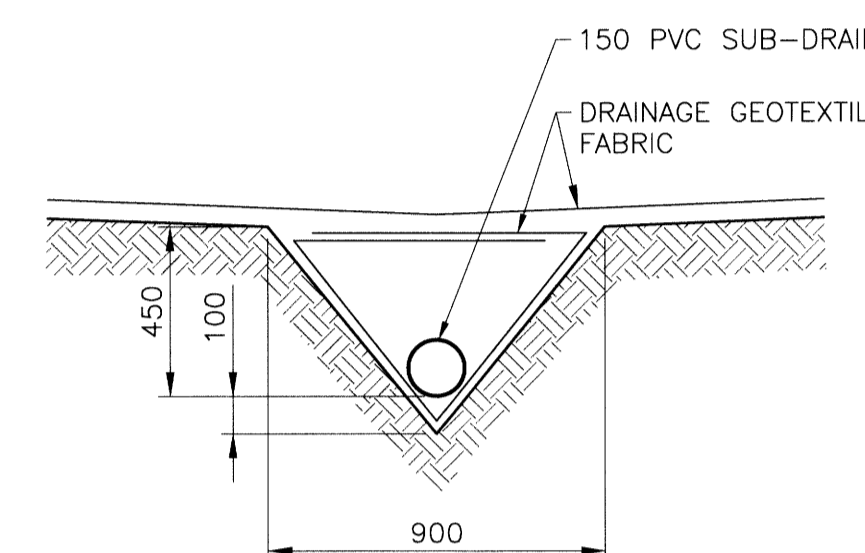
**ALLEY PAVEMENT PROFILE**

SCALE: 1:250 HOR  
1:10 VER



**TYPICAL CROSS SECTION**

SCALE: 1:50



**SUB-DRAIN DETAIL**

SCALE: 1:20

**NOTES:**

1. STATION CHAINAGE IS BASED ON CENTERLINE OF ALLEY RIGHT OF WAY.
2. ADJUST MH AND CB RIMS TO NEW GRADES.
3. PLUG SUB-DRAINS AT TERMINAL ENDS.
4. REGRADE EXISTING PRIVATE SIDEWALKS AS REQUIRED.
5. INSTALLATION OF LIP CURBS AND THEIR EXTENTS TO BE DETERMINED BY THE CONTRACT ADMINISTRATOR.
6. LIGHT STANDARDS, HYDRO POLES AND ANCHORS MAY REQUIRE TEMPORARY SUPPORT/REMOVAL OR REPLACEMENT AT THE CONTRACTOR'S EXPENSE.
7. ISOLATE ALL POLES, BASES AND PILES WITHIN ALLEY RIGHT OF WAY (SD-228C)
8. AVOID DAMAGE TO EXISTING TREES WITHIN THE LIMITS OF CONSTRUCTION
9. CITY OF WINNIPEG SURVEY MONUMENTS EXIST ON THIS SITE. CONTRACTOR TO CONTACT THE CITY OF WINNIPEG GEOMATICS BRANCH 5 WORKING DAYS IN ADVANCE OF CONSTRUCTION TO COORDINATE MONUMENT PROTECTION SERVICES (204-918-1360)

**WARNING**

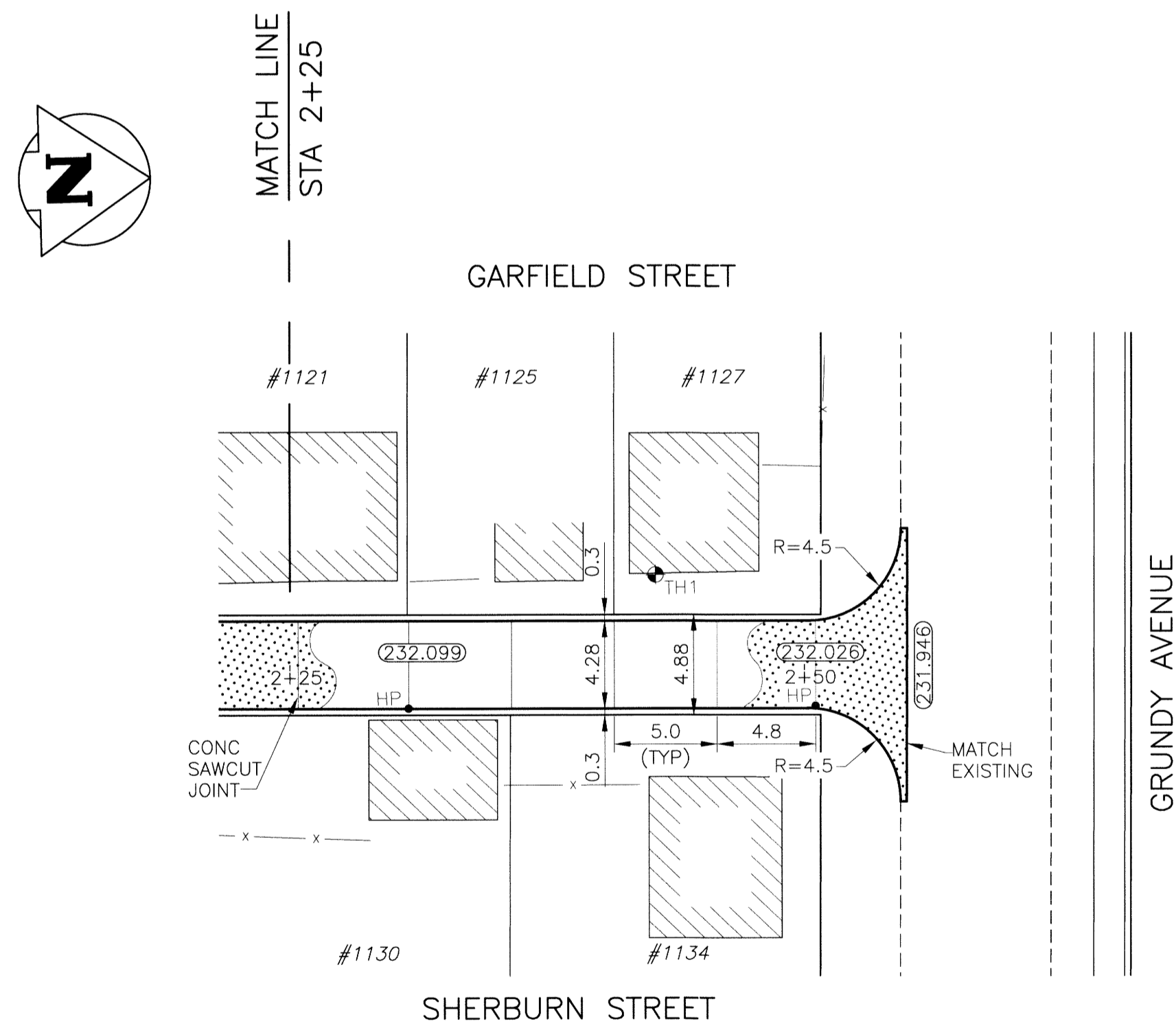
NOTIFY THE GAS COMPANY OF THE PROPOSED LOCATION OF EXCAVATION. TAKE PRECAUTION TO AVOID DAMAGE TO GAS COMPANY INSTALLATIONS. SEE PROVINCIAL REGULATION 210/72 FOR DETAILS.

**METRIC**

WHOLE NUMBERS INDICATE MILLIMETRES  
DECIMALIZED NUMBERS INDICATE METRES

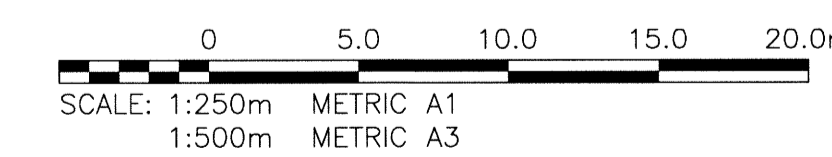
**PROPERTY LIMITS DELINEATION**

DELINEATION OF PROPERTY LIMITS AS SHOWN ON THIS DWG DOES NOT REPRESENT A "LEGAL SURVEY". KGS GROUP MAKES NO REPRESENTATION OR WARRANTY AS TO THE ACCURACY OF PROPERTY LIMITS DELINEATED ON THIS DWG, NOR ON THE DIMENSIONAL ACCURACY OF DWG FEATURES RELATIVE TO THOSE PROPERTY LIMITS.



**ALLEY PAVEMENT PLAN**

SCALE: 1:250 HOR



EXISTING	LEGEND-PLAN	PROPOSED	EXISTING	LEGEND-PLAN	PROPOSED	EXISTING	LEGEND-PROFILE	PROPOSED
500 L/S	LAND DRAINAGE SEWER	300 L/S	TEST HOLE					
250 WWS	WASTE WATER SEWER	250 WWS	GUY WIRE					
	GAS		LIGHT STANDARD					
	HYDRO		BACK OF CURB					
	M.T.S.		CONCRETE					
150 WM	WATERMAIN	150 WM	ASPHALT					
	HYDRANT		SIDEWALK					
	VALVE		PROPERTY LINE					
	MANHOLE		SURVEY BAR					
	CATCH BASIN		GEODETIC BENCHMARK					
	CURB INLET		ELEVATION	231.334	(32.231)			
	POLES							

LOCATION APPROVED UNDERGROUND STRUCTURES		B.M. -	ELEV. -
SUPV. U/G STRUCTURES COMMITTEE	DATE		
NOTE: LOCATION OF UNDERGROUND STRUCTURES AS SHOWN ARE BASED ON THE BEST INFORMATION AVAILABLE BUT NO GUARANTEE IS GIVEN THAT ALL EXISTING UTILITIES ARE SHOWN OR THAT THE GIVEN LOCATIONS ARE EXACT. CONFIRMATION OF EXISTENCE AND EXACT LOCATION OF ALL SERVICES MUST BE OBTAINED FROM THE INDIVIDUAL UTILITIES BEFORE PROCEEDING WITH CONSTRUCTION.			
NO.	REVISIONS	DATE	BY

DESIGNED BY		CHECKED BY	
RBO			
DRAWN BY		APPROVED BY	
GEL/DWV			
HOR. SCALE:	1:250	RELEASED FOR CONSTRUCTION:	
VERTICAL:	1:50	DATE	
ISSUED FOR TENDER	14/07/25	DATE	14/05/02

ENGINEER'S SEAL  
  
 CONSULTANT DRAWING NO.  
 13-0107-032\_C07

**THE CITY OF WINNIPEG**  
 PUBLIC WORKS DEPARTMENT  
 TRANSPORTATION ENGINEERING DIVISION

PROJECT TITLE  
**2014 ALLEY RENEWAL PROGRAM**  
 CONTRACT 2  
 GARFIELD ST/SHERBURN ST  
 YARWOOD AVE TO GRUNDY AVE  
 STA 2+25 TO GRUNDY AVE

SHEET OF  
**07** OF **17**

COMPUTER FILE NAME  
 13-0107-032\_CALL

CITY DRAWING NUMBER  
**0007**

P:\Projects\2013\13-0107-032\Doc\Control\ToBeIssued\DWG\48-2014\_Drawing\_0007-Rev 0.dwg - Tab: C07 Plotted By: DWeber 07/25/2014 [Fri 10:08am] PLOT 1:1 A-1