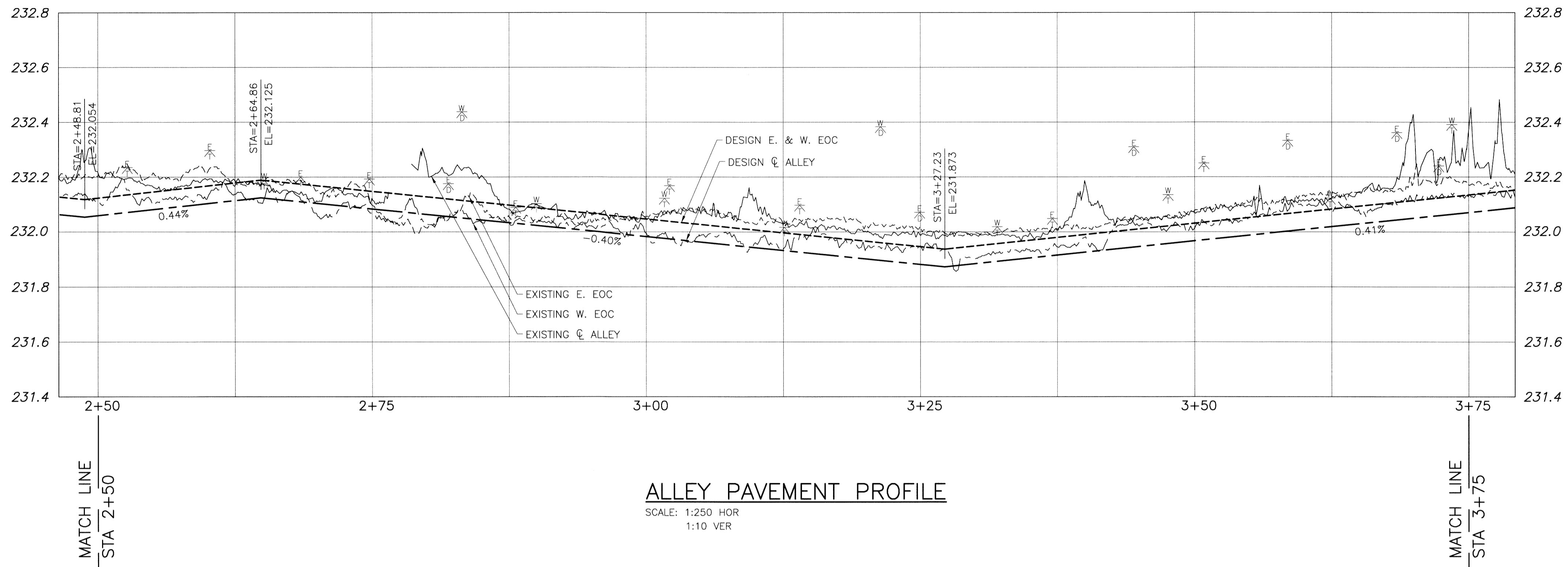
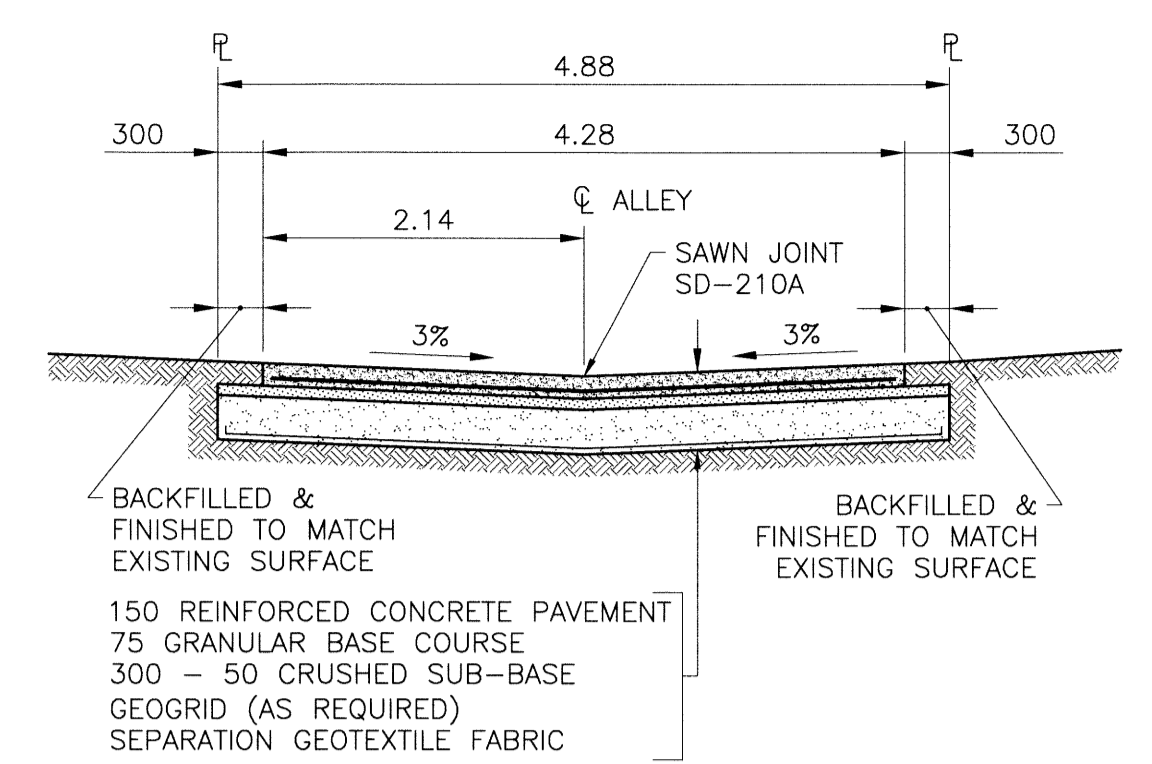


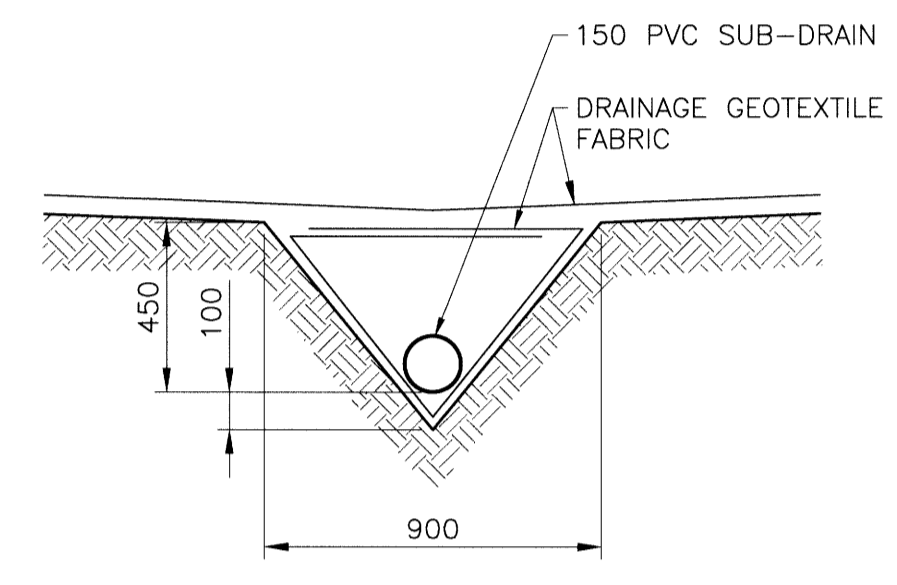
P:\Projects\2013\13-0107-032\Doc Control\Tobias\DWG\748-2014-Drawing\_0016-Rev\_0.dwg - Tab: C16 Plotted By: Dwieber 07/25/2014 [Fri 10:24am] PLOT 1:1 A-1



**ALLEY PAVEMENT PROFILE**  
SCALE: 1:250 HOR  
1:10 VER



**TYPICAL CROSS SECTION**  
SCALE: 1:50



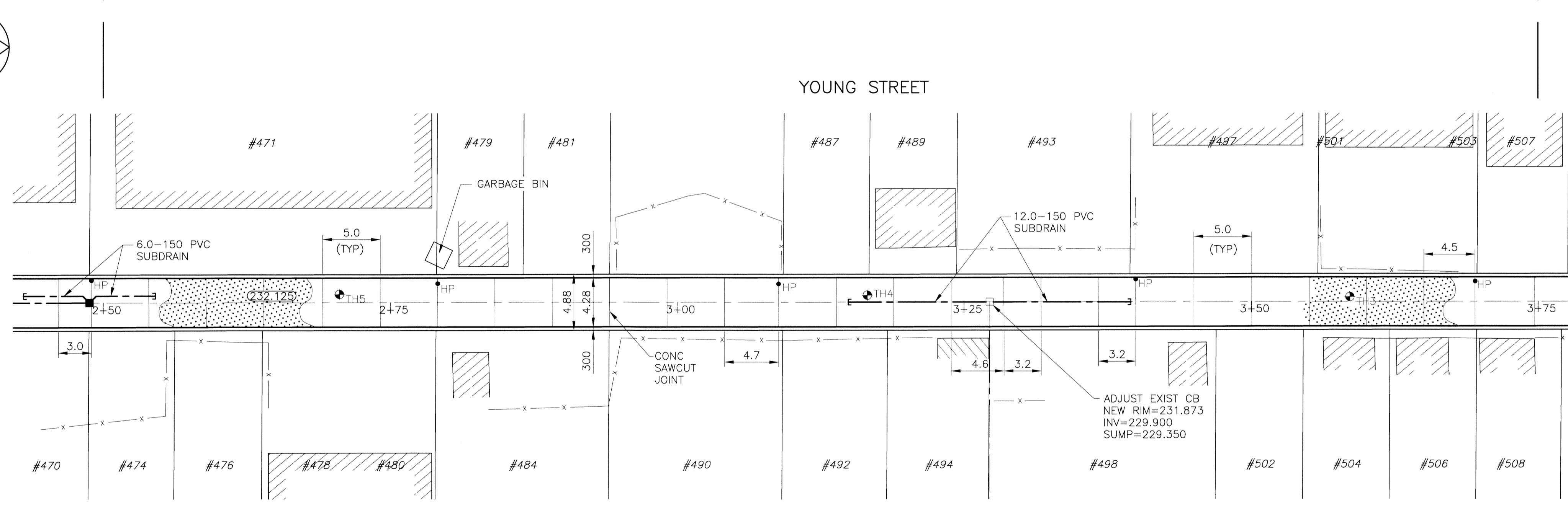
**SUB-DRAIN DETAIL**  
SCALE: 1:20

- NOTES:**
1. STATION CHAINAGE IS BASED ON CENTERLINE OF ALLEY RIGHT OF WAY.
  2. ADJUST MH AND CB RIMS TO NEW GRADES.
  3. PLUG SUB-DRAINS AT TERMINAL ENDS.
  4. REGRADE EXISTING PRIVATE SIDEWALKS AS REQUIRED.
  5. INSTALLATION OF LIP CURBS AND THEIR EXTENTS TO BE DETERMINED BY THE CONTRACT ADMINISTRATOR.
  6. LIGHT STANDARDS, HYDRO POLES AND ANCHORS MAY REQUIRE TEMPORARY SUPPORT/REMOVAL OR REPLACEMENT AT THE CONTRACTOR'S EXPENSE.
  7. ISOLATE ALL POLES, BASES AND PILES WITHIN ALLEY RIGHT OF WAY (SD-228C)
  8. AVOID DAMAGE TO EXISTING TREES WITHIN THE LIMITS OF CONSTRUCTION
  9. CITY OF WINNIPEG SURVEY MONUMENTS EXIST ON THIS SITE. CONTRACTOR TO CONTACT THE CITY OF WINNIPEG GEOMATICS BRANCH 5 WORKING DAYS IN ADVANCE OF CONSTRUCTION TO COORDINATE MONUMENT PROTECTION SERVICES (204-918-1360)

**WARNING**  
NOTIFY THE GAS COMPANY OF THE PROPOSED LOCATION OF EXCAVATION. TAKE PRECAUTION TO AVOID DAMAGE TO GAS COMPANY INSTALLATIONS. SEE PROVINCIAL REGULATION 210/72 FOR DETAILS.

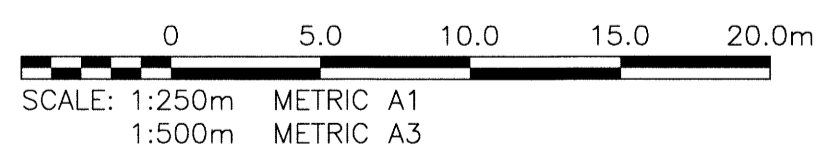
**METRIC**  
WHOLE NUMBERS INDICATE MILLIMETRES  
DECIMALIZED NUMBERS INDICATE METRES

**PROPERTY LIMITS DELINEATION**  
DELINEATION OF PROPERTY LIMITS AS SHOWN ON THIS DWG DOES NOT REPRESENT A "LEGAL SURVEY". KGS GROUP MAKES NO REPRESENTATION OR WARRANTY AS TO THE ACCURACY OF PROPERTY LIMITS DELINEATED ON THIS DWG, NOR ON THE DIMENSIONAL ACCURACY OF DWG FEATURES RELATIVE TO THOSE PROPERTY LIMITS.



**ALLEY PAVEMENT PLAN**  
SCALE: 1:250 HOR

**APEGN**  
Certificate of Authorization  
KGS Group  
No. 245



EXISTING	LEGEND-PLAN	PROPOSED	EXISTING	LEGEND-PLAN	PROPOSED
---	LAND DRAINAGE SEWER	---	---	TEST HOLE	---
---	WASTE WATER SEWER	---	---	GUY WIRE	---
---	GAS	---	---	LIGHT STANDARD	---
---	HYDRO	---	---	BACK OF CURB	---
---	M.T.S.	---	---	CONCRETE	---
---	WATERMAIN	---	---	ASPHALT	---
---	HYDRANT	---	---	SIDWALK	---
---	VALVE	---	---	PROPERTY LINE	---
---	MANHOLE	---	---	SURVEY BAR	---
---	CATCH BASIN	---	---	GEODETIC BENCHMARK	---
---	CURB INLET	---	---	ELEVATION	---
---	POLES	---	---		---
---		---	---		---

NO.	REVISIONS	DATE	BY
0	ISSUED FOR TENDER	14/07/25	CR

B.M. 37-020 ELEV. 232.298	S.E. Cor. Sargent Ave. & Spence St., Toit. in N. Conc. foundation No. 485 Sargent Ave., 0.5m E. & 0.1m below brick of N.W. Cor. of Bldg.
DESIGNED BY: RBO	CHECKED BY: [Signature]
DRAWN BY: GEL/DMW	APPROVED BY: [Signature]
HOR. SCALE: 1:250	RELEASED FOR CONSTRUCTION:
VERTICAL: 1:50	DATE: 14/05/02

ENGINEER'S SEAL  
M.G. ROWBOTHAM  
Member  
22679  
July 25, 2014

**THE CITY OF WINNIPEG**  
PUBLIC WORKS DEPARTMENT  
TRANSPORTATION ENGINEERING DIVISION

PROJECT TITLE: 2014 ALLEY RENEWAL PROGRAM  
CONTRACT 2  
YOUNG ST/SPENCE ST  
ELLICE AVE TO SARGENT AVE  
STA 2+50 TO STA 3+75

SHEET 16 OF 17  
COMPUTER FILE NAME: 13-0107-032\_CALL  
CITY DRAWING NUMBER: 0016

CONSULTANT DRAWING NO.  
13-0107-032\_C16