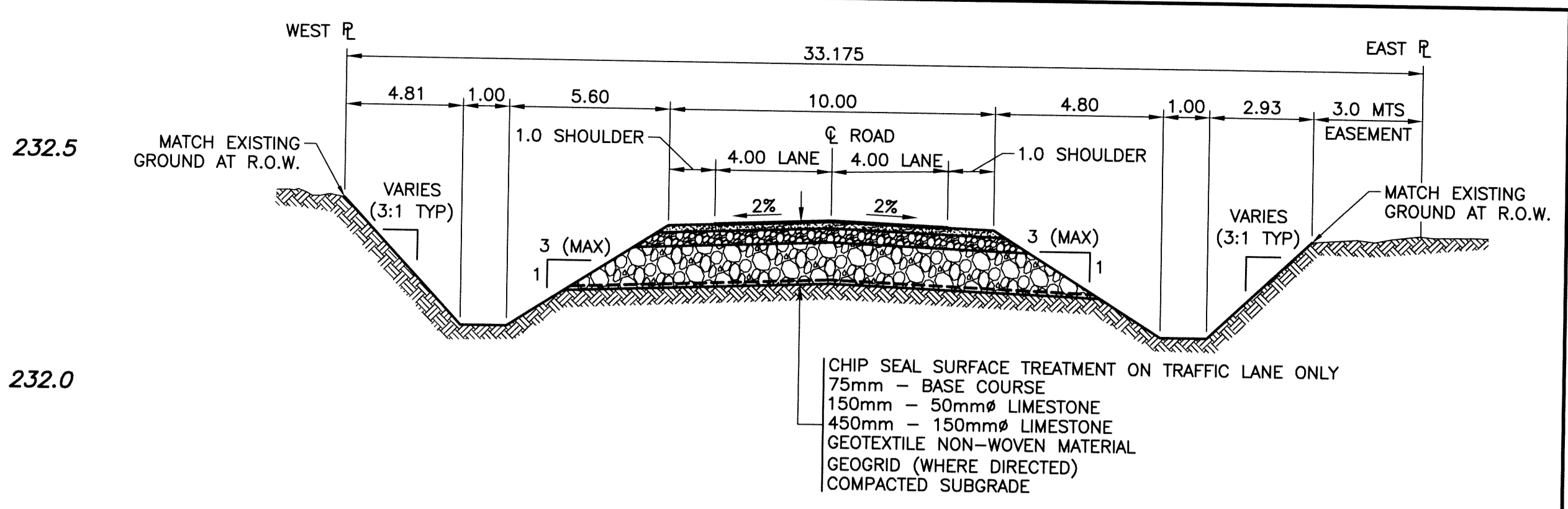
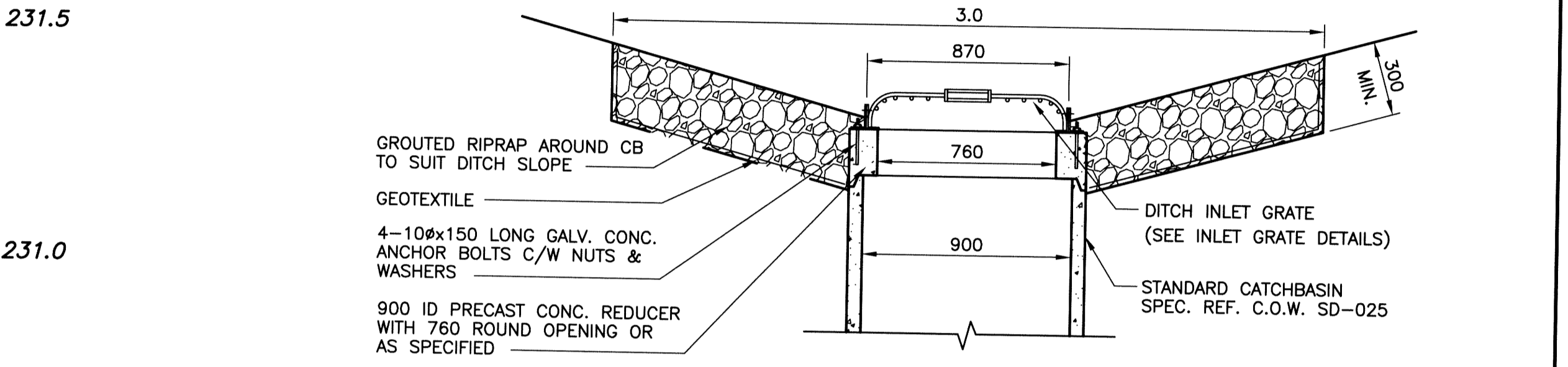


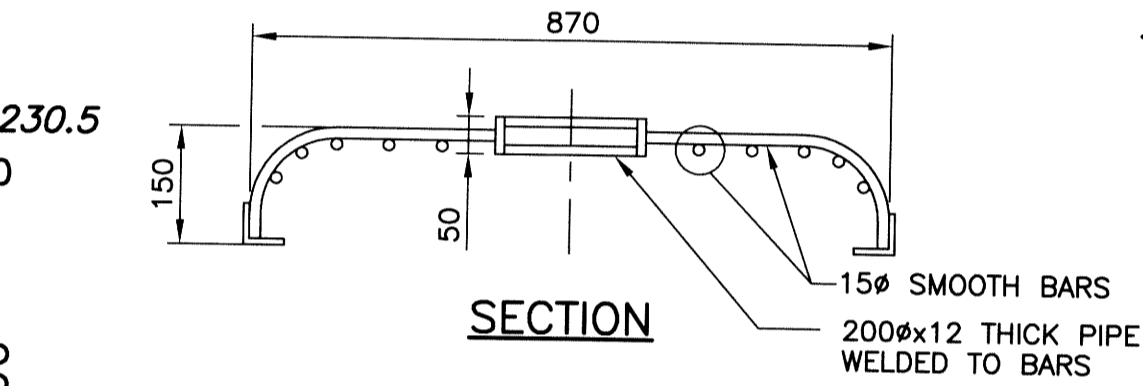
PROFILE
SCALE: 1:250 HOR
1:10 VER



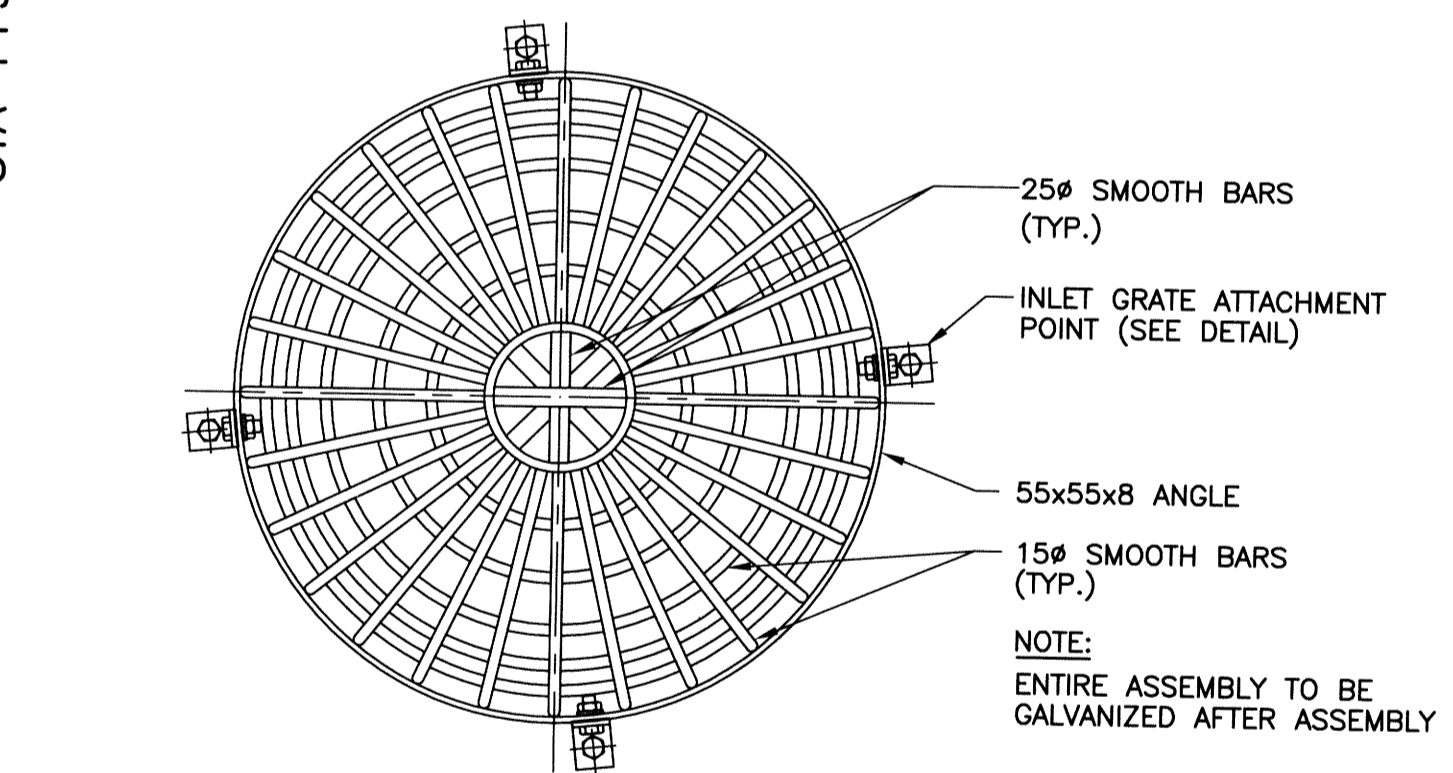
DESIGN ROADWAY SECTION
SCALE: NTS



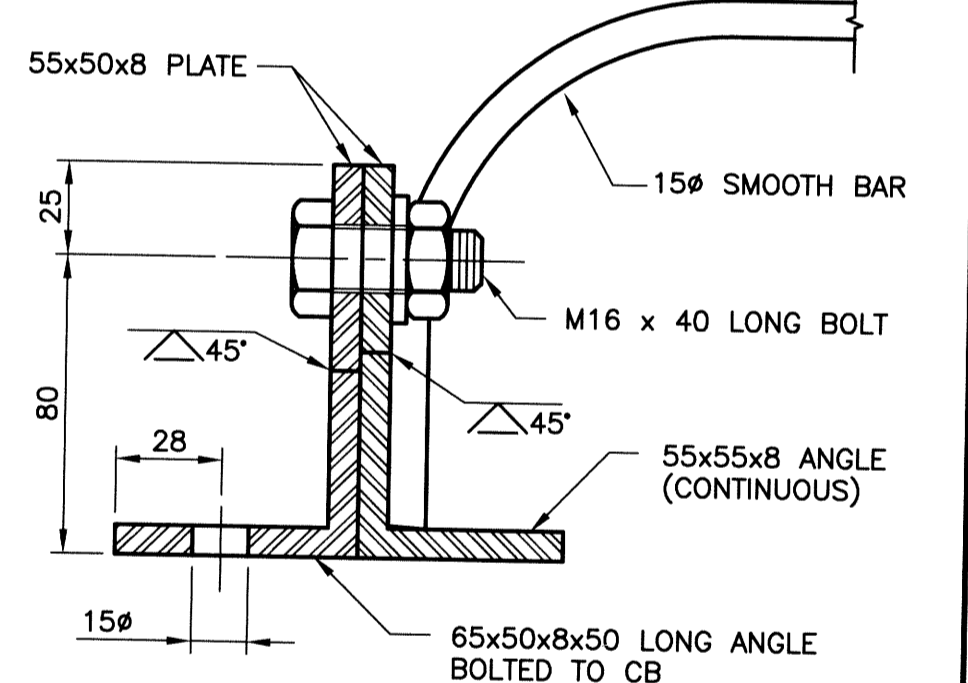
DITCH CATCH BASIN DETAIL
SCALE: 1:20



SECTION

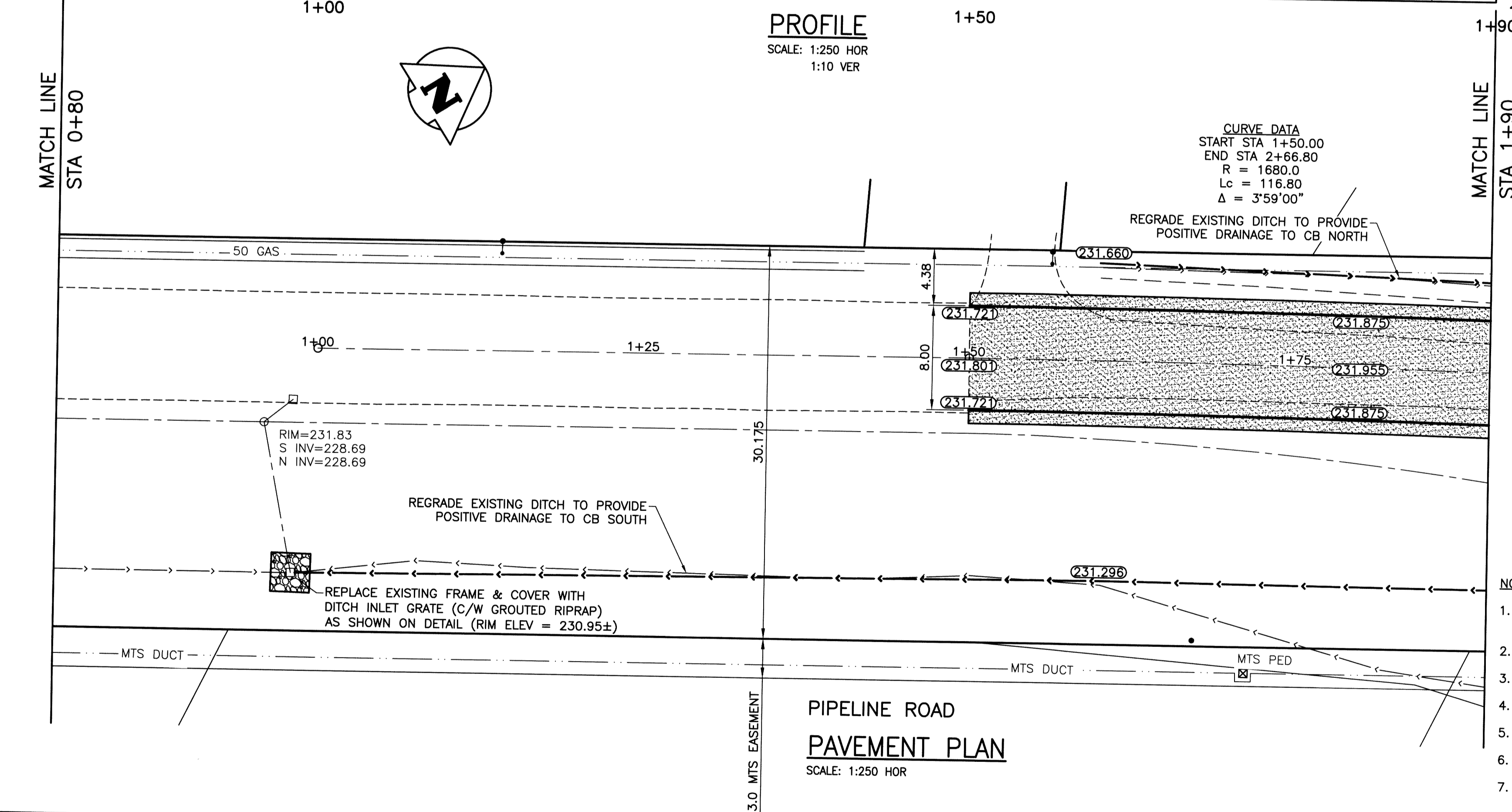
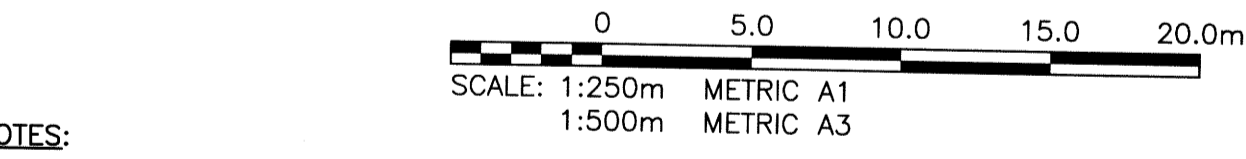


DITCH INLET GRATE DETAIL
SCALE: 1:10



DITCH INLET GRATE ATTACHMENT DETAIL
SCALE: 1:2

- NOTES:**
1. ALL WORKS TO BE IN ACCORDANCE WITH THE LATEST REVISION OF THE CITY OF WINNIPEG STANDARD CONSTRUCTION SPECIFICATIONS.
 2. STATION CHAINAGE IS BASED ON CENTRELINE OF PROPOSED ROADWAY.
 3. REGRADE EXISTING PRIVATE APPROACHES AS REQUIRED.
 4. CONTACT MANITOBA HYDRO TO LOWER FIBRE OPTIC CABLE WHERE REQUIRED.
 5. REGRADE EXISTING DITCHES AS DIRECTED BY CONTRACT ADMINISTRATOR.
 6. RENEW EXISTING APPROACHES AS DIRECTED BY CONTRACT ADMINISTRATOR.
 7. NEW CULVERTS TO BE INSTALLED UNDER ALL APPROACHES AS DIRECTED BY CONTRACT ADMINISTRATOR.
 8. CHIP-SEAL SURFACE TREATMENT ON APPROACHES AND TRAFFIC LANE ONLY.



PIPELINE ROAD PAVEMENT PLAN
SCALE: 1:250 HOR

EXISTING	LEGEND-PLAN	PROPOSED	EXISTING	LEGEND-PLAN	PROPOSED	EXISTING	LEGEND-PROFILE	PROPOSED
300 LDS	LAND DRAINAGE SEWER	300 LDS	BACK OF CURB	CONCRETE			Q ROAD PROFILE	
250 WWS	WASTE WATER SEWER	250 WWS	GRAVEL ROAD				W R PROFILE	
	GAS		SHOULDER				E R PROFILE	
	HYDRO		DITCH				W DITCH PROFILE	
	M.T.S.		SIDEWALK				E DITCH PROFILE	
150 WM	WATERMAIN	150 WM	CULVERT					
	HYDRANT		GUY WIRE					
	VALVE		TREE					
	MANHOLE		SURVEY BAR					
	CATCH BASIN		GEODETIC BENCHMARK					
	CURB INLET		ELEVATION					
	LIGHT STANDARD							
	POLES							

LOCATION APPROVED UNDERGROUND STRUCTURES

SUPV. U/G STRUCTURES COMMITTEE DATE

NOTE:
LOCATION OF UNDERGROUND STRUCTURES AS SHOWN ARE BASED ON THE BEST INFORMATION AVAILABLE BUT NO GUARANTEE IS GIVEN THAT ALL EXISTING UTILITIES ARE SHOWN OR THAT THE GIVEN LOCATIONS ARE EXACT. CONFIRMATION OF EXISTENCE AND EXACT LOCATION OF ALL SERVICES MUST BE OBTAINED FROM THE INDIVIDUAL UTILITIES BEFORE PROCEEDING WITH CONSTRUCTION.

NO.	REVISIONS	DATE	BY
0	ISSUED FOR TENDER	14/08/01	JLV

KGS GROUP CONSULTING ENGINEERS

DESIGNED BY: MK
DRAWN BY: DMW
CHECKED BY: [Signature]
APPROVED BY: [Signature]

HOR. SCALE: 1:250
VERTICAL: 1:50

RELEASED FOR CONSTRUCTION: [Signature]

DATE: 2014/06/03

APEGM Certificate of Authorization
KGS Group
No. 245

METRIC
WHOLE NUMBERS INDICATE MILLIMETRES
DECIMALIZED NUMBERS INDICATE METRES

WARNING

1. NOTIFY THE GAS COMPANY OF THE PROPOSED LOCATION OF EXCAVATION.
2. TAKE PRECAUTION TO AVOID DAMAGE TO GAS COMPANY INSTALLATIONS.
3. SEE PROVINCIAL REGULATION 210/72 FOR DETAILS.
4. AVOID DAMAGE TO EXISTING MANITOBA HYDRO EASEMENT WITHIN THE LIMITS OF CONSTRUCTION.
5. TAKE PRECAUTION TO AVOID DAMAGE TO MTS UNDERGROUND CABLES.

THE CITY OF WINNIPEG
PUBLIC WORKS DEPARTMENT
ENGINEERING DIVISION

PROJECT TITLE: PIPELINE ROAD PAVEMENT RECONSTRUCTION
TEMPLETON AVE TO MOLLARD AVE
STA 0+80 TO STA 1+90

SHEET OF 02 OF 10
COMPUTER FILE NAME: PIPELINE-PL0T
CITY DRAWING NUMBER: 002

U:\PMS\14-0107-010\14-0107-010_CALL.dwg - Tab: 002 Plotted By: GLOPHEX 08/01/2014 [Fri 1:01pm]