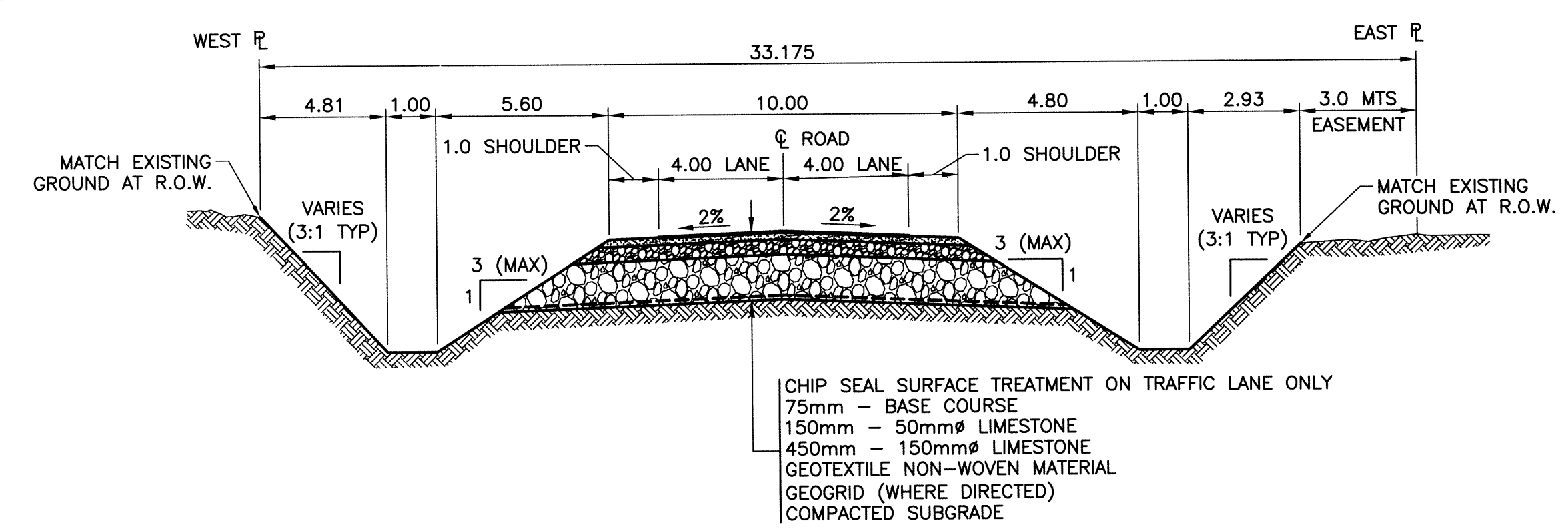
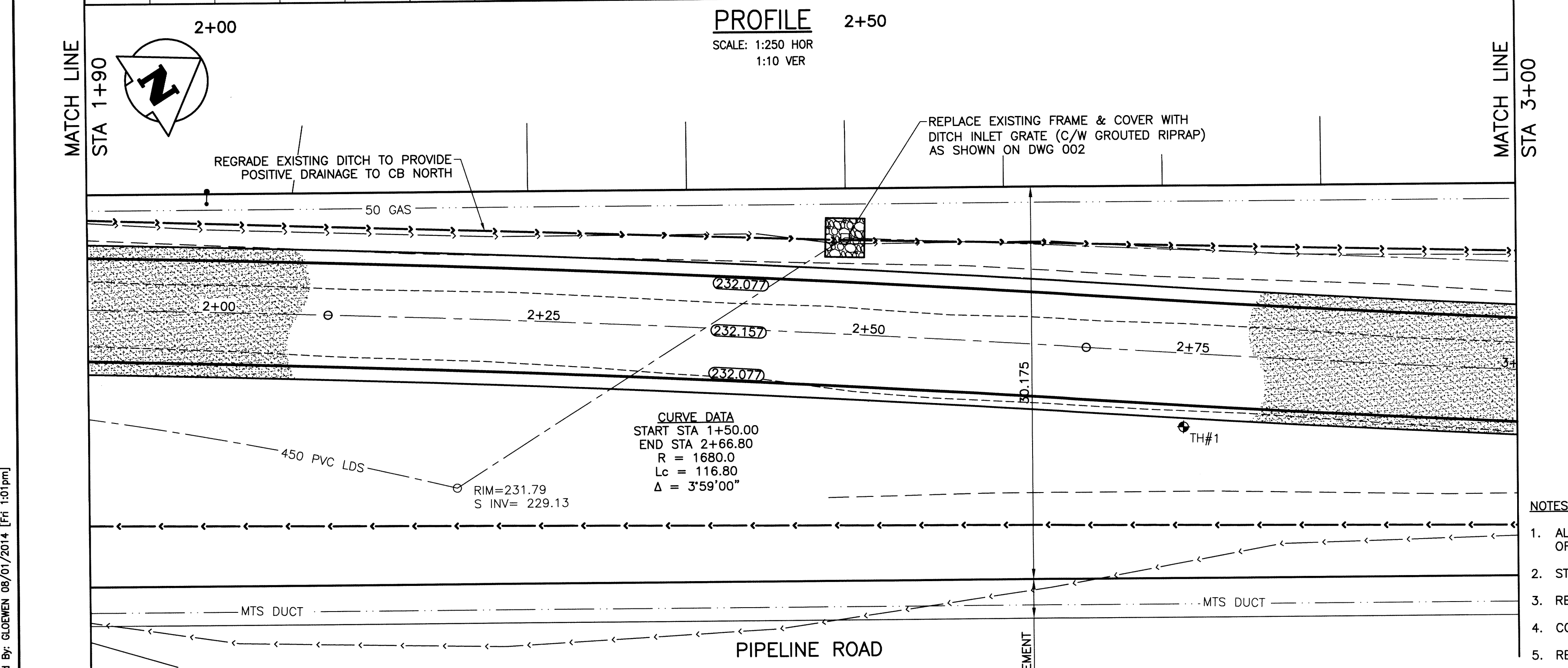


PROFILE
SCALE: 1:250 HOR
1:10 VER



DESIGN ROADWAY SECTION
SCALE: NTS



PAVEMENT PLAN
SCALE: 1:250 HOR

300 LBS 250 WWS	LAND DRAINAGE SEWER WASTE WATER SEWER	300 LBS 250 WWS	BACK OF CURB CONCRETE	EXISTING
150 WM	GAS HYDRO M.T.S.	150 WM	GRAVEL ROAD SHOULDER DITCH	EXISTING
⊕	WATERMAIN HYDRANT VALVE MANHOLE	⊕	SIDEWALK PROPERTY LINE CULVERT GUY WIRE TREE	EXISTING
○	CATCH BASIN CURB INLET	○	SURVEY BAR GEODETIC BENCHMARK	EXISTING
●	LIGHT STANDARD POLES	●	ELEVATION LEGEND-PLAN	PROPOSED
---	EXISTING	---	LEGEND-PROFILE	PROPOSED

LOCATION APPROVED UNDERGROUND STRUCTURES

NO.	REVISIONS	DATE	BY
0	ISSUED FOR TENDER	14/08/01	M.V.

B.M. KGS BASE ELEV.	DRAWING BASED ON C.S.R.S. NAD 83 SYSTEM, UTM GRID
DESIGNED BY MK	CHECKED BY EGM
DRAWN BY DMW	APPROVED BY PBT
HOR. SCALE: 1:250	RELEASED FOR CONSTRUCTION:
VERTICAL: 1:50	DATE

KGS GROUP CONSULTING ENGINEERS

ENGINEER'S SEAL
M.KNYAZHER
Member 31158

CONSULTANT DRAWING NO. 14-0107-010_003

DESIGNED BY	MK
DRAWN BY	DMW
CHECKED BY	EGM
APPROVED BY	PBT

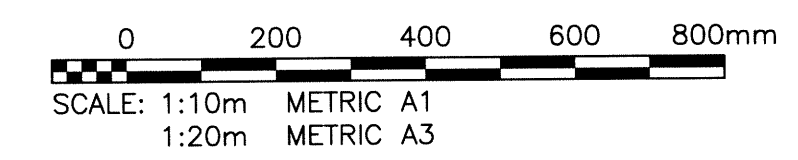
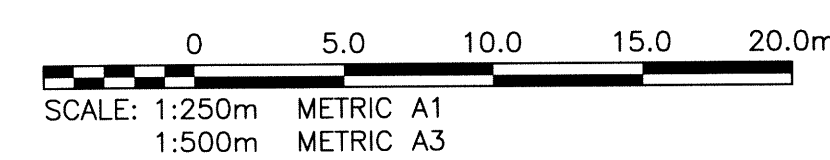
THE CITY OF WINNIPEG PUBLIC WORKS DEPARTMENT ENGINEERING DIVISION

PROJECT TITLE: PIPELINE ROAD PAVEMENT RECONSTRUCTION
TEMPLETON AVE TO MOLLARD AVE
STA 1+90 TO STA 3+00

SHEET OF	03 OF 10
COMPUTER FILE NAME	PIPELINE-PLOT
CITY DRAWING NUMBER	003

NOTES:

- ALL WORKS TO BE IN ACCORDANCE WITH THE LATEST REVISION OF THE CITY OF WINNIPEG STANDARD CONSTRUCTION SPECIFICATIONS.
- STATION CHAINAGE IS BASED ON CENTRELINE OF PROPOSED ROADWAY.
- REGRADE EXISTING PRIVATE APPROACHES AS REQUIRED.
- CONTACT MANITOBA HYDRO TO LOWER FIBRE OPTIC CABLE WHERE REQUIRED.
- REGRADE EXISTING DITCHES AS DIRECTED BY CONTRACT ADMINISTRATOR.
- RENEW EXISTING APPROACHES AS DIRECTED BY CONTRACT ADMINISTRATOR.
- NEW CULVERTS TO BE INSTALLED UNDER ALL APPROACHES AS DIRECTED BY CONTRACT ADMINISTRATOR.
- CHIP-SEAL SURFACE TREATMENT ON APPROACHES AND TRAFFIC LANE ONLY.



APEGM
Certificate of Authorization
KGS Group
No. 245

METRIC
WHOLE NUMBERS INDICATE MILLIMETRES
DECIMALIZED NUMBERS INDICATE METRES

- WARNING**
- NOTIFY THE GAS COMPANY OF THE PROPOSED LOCATION OF EXCAVATION.
 - TAKE PRECAUTION TO AVOID DAMAGE TO GAS COMPANY INSTALLATIONS.
 - SEE PROVINCIAL REGULATION 210/72 FOR DETAILS.
 - AVOID DAMAGE TO EXISTING MANITOBA HYDRO EASEMENT WITHIN THE LIMITS OF CONSTRUCTION.
 - TAKE PRECAUTION TO AVOID DAMAGE TO MTS UNDERGROUND CABLES.

PROPERTY LIMITS DELINEATION
DELINEATION OF PROPERTY LIMITS AS SHOWN ON THIS DWG DOES NOT REPRESENT A "LEGAL SURVEY". KGS GROUP MAKES NO REPRESENTATION OR WARRANTY AS TO THE ACCURACY OF PROPERTY LIMITS DELINEATED ON THIS DWG, NOR ON THE DIMENSIONAL ACCURACY OF DWG FEATURES RELATIVE TO THOSE PROPERTY LIMITS.