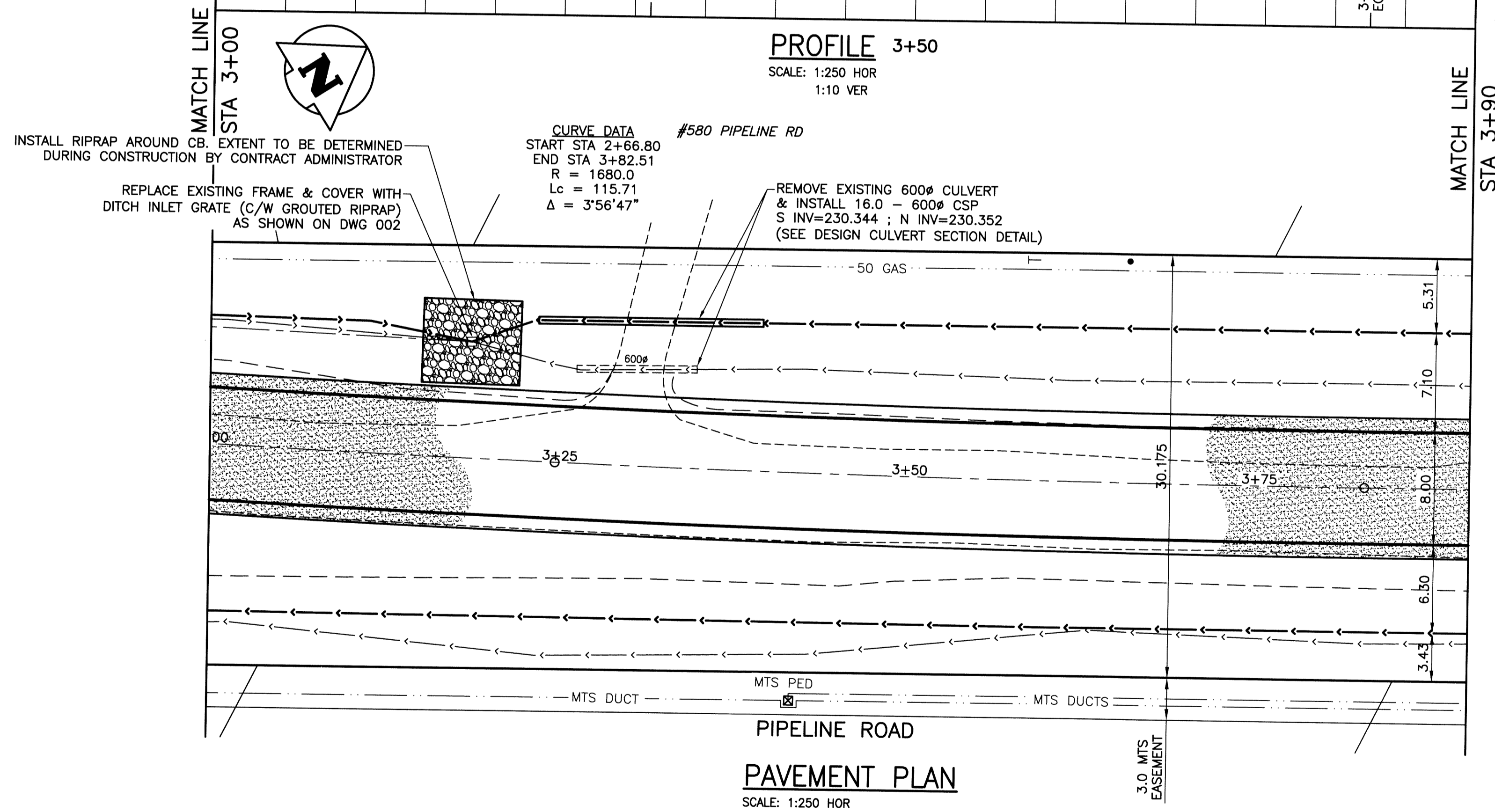


PROFILE 3+50
SCALE: 1:250 HOR
1:10 VER



PIPELINE ROAD PAVEMENT PLAN
SCALE: 1:250 HOR

U:\P\14-0107-010\14-0107-010_CAD.dwg - Tab: 004 Plotted By: GLOEVEN 08/01/2014 [Fri 1:02pm]

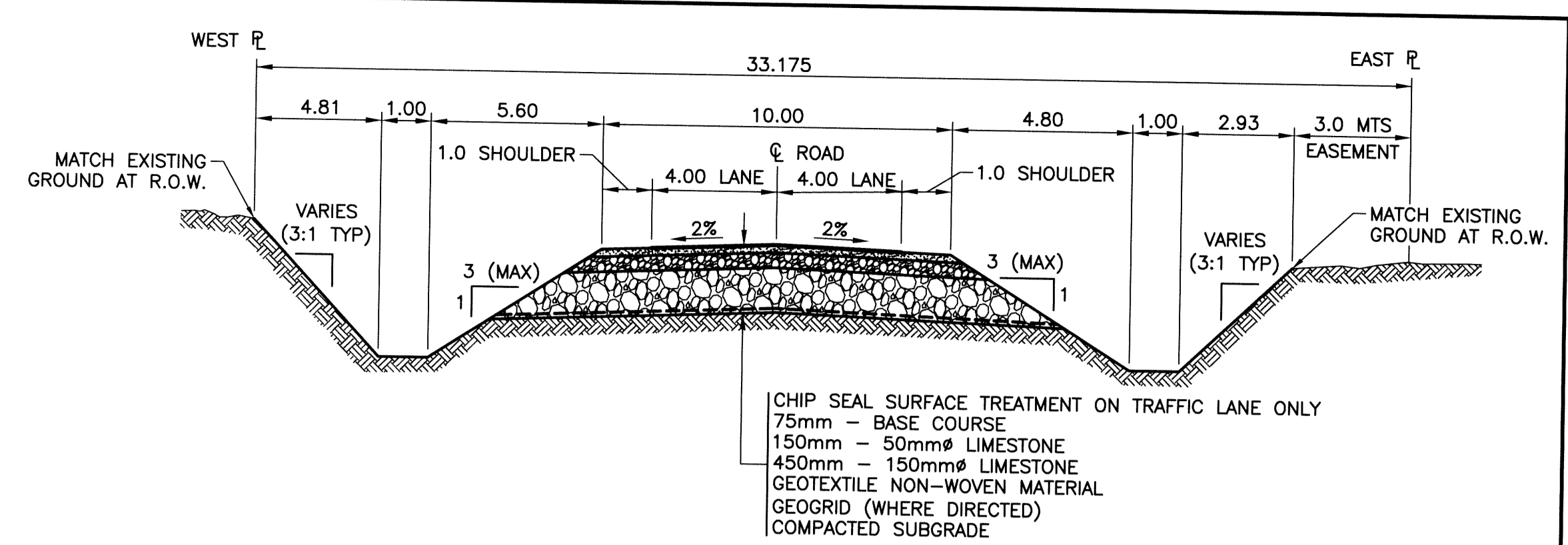
300 Lds	LAND DRAINAGE SEWER	300 Lds	BACK OF CURB		
250 WWS	WASTE WATER SEWER	250 WWS	CONCRETE		
	GAS		GRAVEL ROAD		
	HYDRO		SHOULDER		
	M.T.S.		DITCH		
150 WM	WATERMAIN	150 WM	SIDEWALK		
⊕	HYDRANT	⊕	PROPERTY LINE		
⊙	VALVE	⊙	CULVERT		
⊖	MANHOLE	⊖	GUY WIRE		
⊔	CATCH BASIN	⊔	TREE		
⊔	CURB INLET	⊔	SURVEY BAR		
⊔	LIGHT STANDARD	⊔	GEODETIC BENCHMARK		
⊔	POLES	⊔	ELEVATION		
●	EXISTING	●	PROPOSED		
---	LEGEND-PLAN	---	EXISTING		
---	PROPOSED	---	LEGEND-PROFILE		
---	EXISTING	---	PROPOSED		

LOCATION APPROVED UNDERGROUND STRUCTURES

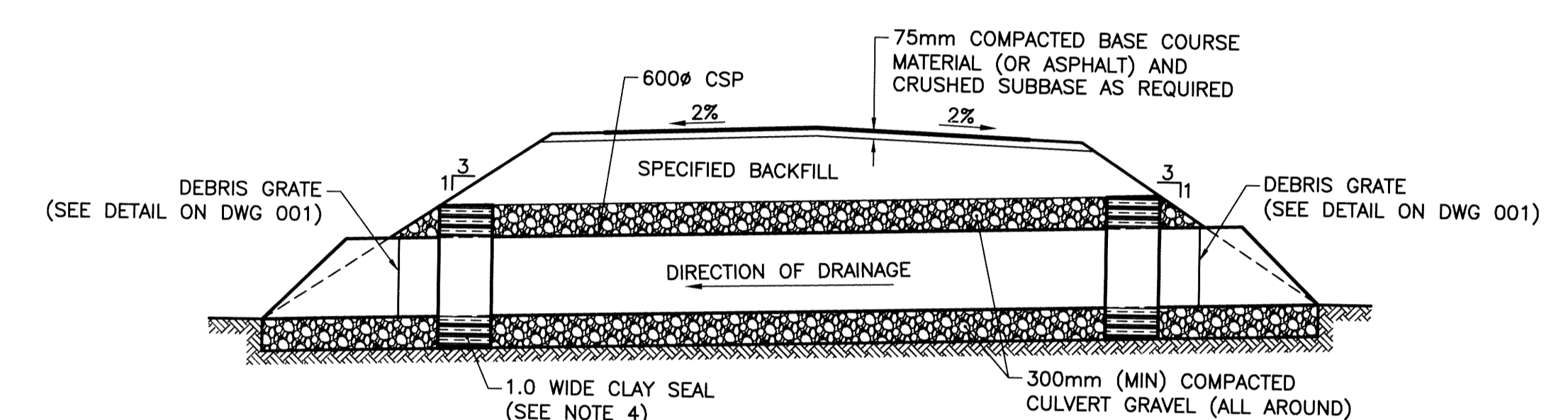
SUPV. U/G STRUCTURES DATE COMMITTEE

NOTE:
LOCATION OF UNDERGROUND STRUCTURES AS SHOWN ARE BASED ON THE BEST INFORMATION AVAILABLE BUT NO GUARANTEE IS GIVEN THAT ALL EXISTING UTILITIES ARE SHOWN OR THAT THE GIVEN LOCATIONS ARE EXACT. CONFIRMATION OF EXISTENCE AND EXACT LOCATION OF ALL SERVICES MUST BE OBTAINED FROM THE INDIVIDUAL UTILITIES BEFORE PROCEEDING WITH CONSTRUCTION.

B.M. KGS BASE ELEV.	DRAWING BASED ON C.S.R.S. NAD 83 SYSTEM, UTM GRID
NO.	REVISIONS
DATE	BY
DATE	DATE

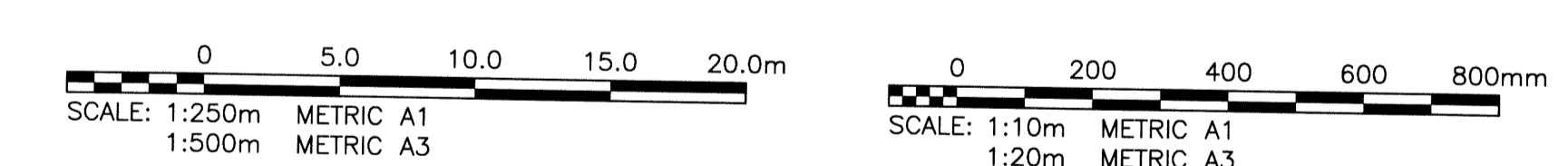


DESIGN ROADWAY SECTION
SCALE: NTS



DESIGN CULVERT SECTION
SCALE: H=1:100
V=1:50

- NOTES:**
1. REGRADE EXISTING DITCHES AS DIRECTED BY CONTRACT ADMINISTRATOR.
 2. RENEW EXISTING APPROACHES AS DIRECTED BY CONTRACT ADMINISTRATOR.
 3. NEW CULVERTS TO BE INSTALLED UNDER ALL APPROACHES AS DIRECTED BY CONTRACT ADMINISTRATOR.
 4. INSTALL 1.0m LONG COMPACTED CLAY SEAL NEAR BOTH ENDS, IN ACCORDANCE WITH THE SPECIFICATIONS.
 5. INSTALL DEBRIS GRATE ON EACH END OF CULVERTS (SEE DETAIL ON DWG 001).
- WARNING:**
- NOTIFY THE GAS COMPANY OF THE PROPOSED LOCATION OF EXCAVATION.
 - TAKE PRECAUTION TO AVOID DAMAGE TO GAS COMPANY INSTALLATION, SEE PROVINCIAL REGULATION 210/72 FOR DETAILS.
 - AVOID DAMAGE TO EXISTING MANITOBA HYDRO EASEMENT WITHIN THE LIMITS OF CONSTRUCTION.
 - TAKE PRECAUTION TO AVOID DAMAGE TO MTS UNDERGROUND CABLES.



- NOTES:**
1. ALL WORKS TO BE IN ACCORDANCE WITH THE LATEST REVISION OF THE CITY OF WINNIPEG STANDARD CONSTRUCTION SPECIFICATIONS.
 2. STATION CHAINAGE IS BASED ON CENTRELINE OF PROPOSED ROADWAY.
 3. REGRADE EXISTING PRIVATE APPROACHES AS REQUIRED.
 4. CONTACT MANITOBA HYDRO TO LOWER FIBRE OPTIC CABLE WHERE REQUIRED.
 5. REGRADE EXISTING DITCHES AS DIRECTED BY CONTRACT ADMINISTRATOR.
 6. RENEW EXISTING APPROACHES AS DIRECTED BY CONTRACT ADMINISTRATOR.
 7. NEW CULVERTS TO BE INSTALLED UNDER ALL APPROACHES AS DIRECTED BY CONTRACT ADMINISTRATOR.
 8. CHIP-SEAL SURFACE TREATMENT ON APPROACHES AND TRAFFIC LANE ONLY.

Certificates of Authorization
KGS Group
No. 245

METRIC
WHOLE NUMBERS INDICATE MILLIMETRES
DECIMALIZED NUMBERS INDICATE METRES

WARNING

1. NOTIFY THE GAS COMPANY OF THE PROPOSED LOCATION OF EXCAVATION.
2. TAKE PRECAUTION TO AVOID DAMAGE TO GAS COMPANY INSTALLATIONS.
3. SEE PROVINCIAL REGULATION 210/72 FOR DETAILS.
4. AVOID DAMAGE TO EXISTING MANITOBA HYDRO EASEMENT WITHIN THE LIMITS OF CONSTRUCTION.
5. TAKE PRECAUTION TO AVOID DAMAGE TO MTS UNDERGROUND CABLES.

PROPERTY LIMITS DELINEATION
DELINEATION OF PROPERTY LIMITS AS SHOWN ON THIS DWG DOES NOT REPRESENT A "LEGAL SURVEY". KGS GROUP MAKES NO REPRESENTATION OR WARRANTY AS TO THE ACCURACY OF PROPERTY LIMITS DELINEATED ON THIS DWG, NOR ON THE DIMENSIONAL ACCURACY OF DWG FEATURES RELATIVE TO THOSE PROPERTY LIMITS.

THE CITY OF WINNIPEG
PUBLIC WORKS DEPARTMENT
ENGINEERING DIVISION

PROJECT TITLE
PIPELINE ROAD PAVEMENT RECONSTRUCTION
TEMPLETON AVE TO MOLLARD AVE
STA 3+00 TO STA 3+90

DESIGNED BY: MK

DRAWN BY: DMW

HR. SCALE: 1:250

VERTICAL: 1:50

ISSUED FOR TENDER: 14/06/01

NO. REVISIONS

CHECKED BY: EJM

APPROVED BY: MHL

RELEASED FOR CONSTRUCTION:

DATE: 2014/06/03

ENGINEER'S SEAL

CONSULTANT DRAWING NO.
14-0107-010_004

SHEET OF 10

COMPUTER FILE NAME
PIPELINE-PLOT

CITY DRAWING NUMBER
004