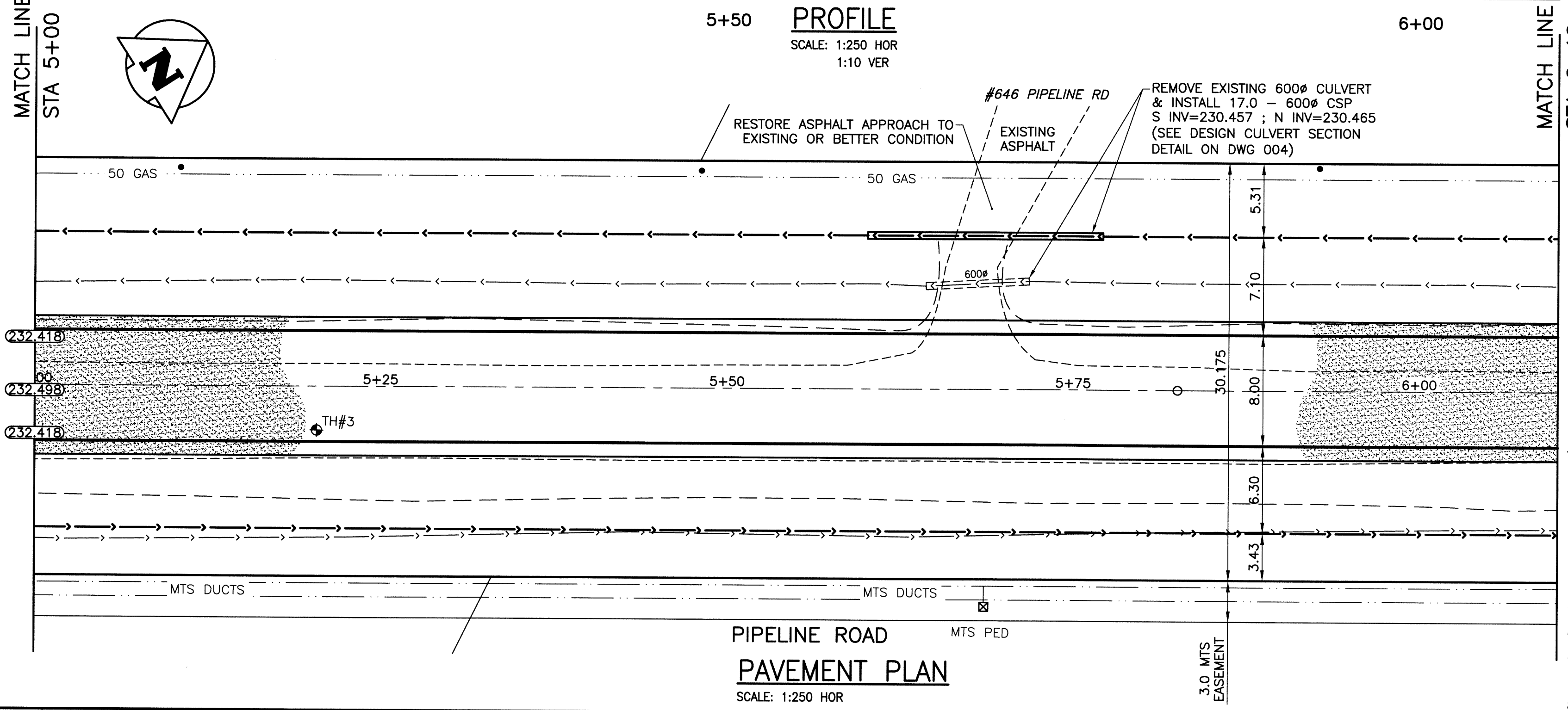
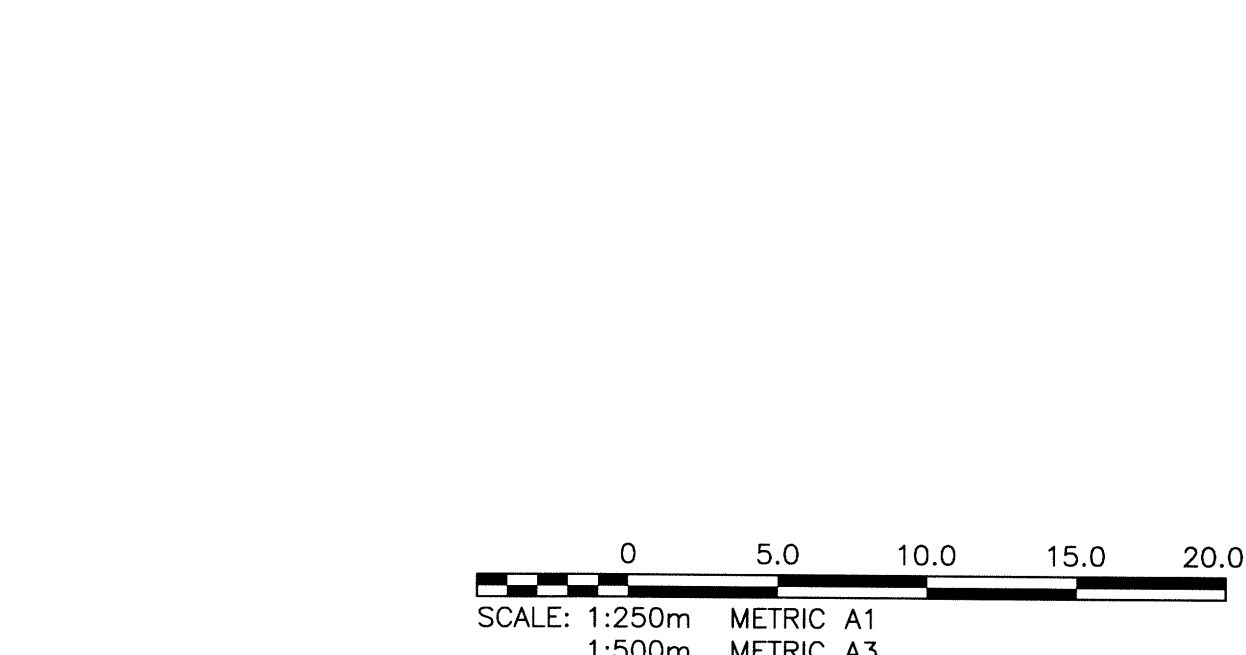


DESIGN ROADWAY SECTION
SCALE: NTS



PROFILE
SCALE: 1:250 HOR
1:10 VER



- NOTES:**
- ALL WORKS TO BE IN ACCORDANCE WITH THE LATEST REVISION OF THE CITY OF WINNIPEG STANDARD CONSTRUCTION SPECIFICATIONS.
 - STATION CHAINAGE IS BASED ON CENTRELINE OF PROPOSED ROADWAY.
 - REGRADE EXISTING PRIVATE APPROACHES AS REQUIRED.
 - CONTACT MANITOBA HYDRO TO LOWER FIBRE OPTIC CABLE WHERE REQUIRED.
 - REGRADE EXISTING DITCHES AS DIRECTED BY CONTRACT ADMINISTRATOR.
 - RENEW EXISTING APPROACHES AS DIRECTED BY CONTRACT ADMINISTRATOR.
 - NEW CULVERTS TO BE INSTALLED UNDER ALL APPROACHES AS DIRECTED BY CONTRACT ADMINISTRATOR.
 - CHIP-SEAL SURFACE TREATMENT ON APPROACHES AND TRAFFIC LANE ONLY.

APEGM
Certificate of Authorization
KGS Group
No. 245

METRIC
WHOLE NUMBERS INDICATE MILLIMETRES
DECIMALIZED NUMBERS INDICATE METRES

WARNING

- NOTIFY THE GAS COMPANY OF THE PROPOSED LOCATION OF EXCAVATION.
- TAKE PRECAUTION TO AVOID DAMAGE TO GAS COMPANY INSTALLATIONS.
- SEE PROVINCIAL REGULATION 210/72 FOR DETAILS.
- AVOID DAMAGE TO EXISTING MANITOBA HYDRO EASEMENT WITHIN THE LIMITS OF CONSTRUCTION.
- TAKE PRECAUTION TO AVOID DAMAGE TO MTS UNDERGROUND CABLES.

EXISTING	LEGEND-PLAN	PROPOSED	EXISTING	LEGEND-PROFILE	PROPOSED
300 LBS	LAND DRAINAGE SEWER	300 LBS	BACK OF CURB		
250 WWS	WASTE WATER SEWER	250 WWS	CONCRETE		
	GAS		GRAVEL ROAD		
	HYDRO		SHOULDER		
	M.T.S.		DITCH		
150 WM	WATERMAIN	150 WM	SIDEWALK		
	HYDRANT		PROPERTY LINE		
	VALVE		CULVERT		
	MANHOLE		GUY WIRE		
	CATCH BASIN		TREE		
	CURB INLET		SURVEY BAR		
	LIGHT STANDARD		GEODETIC BENCHMARK		
	POLES		ELEVATION		
			(32.231)		

LOCATION APPROVED UNDERGROUND STRUCTURES

SUPPLY U/G STRUCTURES DATE COMMITTEE

NOTE:
LOCATION OF UNDERGROUND STRUCTURES AS SHOWN ARE BASED ON THE BEST INFORMATION AVAILABLE BUT NO GUARANTEE IS GIVEN THAT ALL EXISTING UTILITIES ARE SHOWN OR THAT THE GIVEN LOCATIONS ARE EXACT. CONFIRMATION OF EXISTENCE AND EXACT LOCATION OF ALL SERVICES MUST BE OBTAINED FROM THE INDIVIDUAL UTILITIES BEFORE PROCEEDING WITH CONSTRUCTION.

NO.	REVISIONS	DATE	BY
0	ISSUED FOR TENDER	14/08/01	JMK

KGS GROUP
CONSULTING ENGINEERS

DESIGNED BY: MK
CHECKED BY: [Signature]
DRAWN BY: DMW
APPROVED BY: [Signature]

HOR. SCALE: 1:250
VERTICAL: 1:50

RELEASED FOR CONSTRUCTION: [Signature]
DATE: 2014/06/03

ENGINEER'S SEAL

M. KHAZHER
Member
31158

CONSULTANT DRAWING NO.
14-0107-010_006

THE CITY OF WINNIPEG
PUBLIC WORKS DEPARTMENT
ENGINEERING DIVISION

PROJECT TITLE
PIPELINE ROAD PAVEMENT RECONSTRUCTION
TEMPLETON AVE TO MOLLARD AVE
STA 5+00 TO STA 6+10

SHEET OF
06 OF **10**

COMPUTER FILE NAME
PIPELINE-PL0T

CITY DRAWING NUMBER
006

U:\PROJECTS\14-0107-010\14-0107-010_CALL.dwg - Tab: 006 Plotted By: GLOBEWIN 08/01/2014 [Fri 1:03pm]